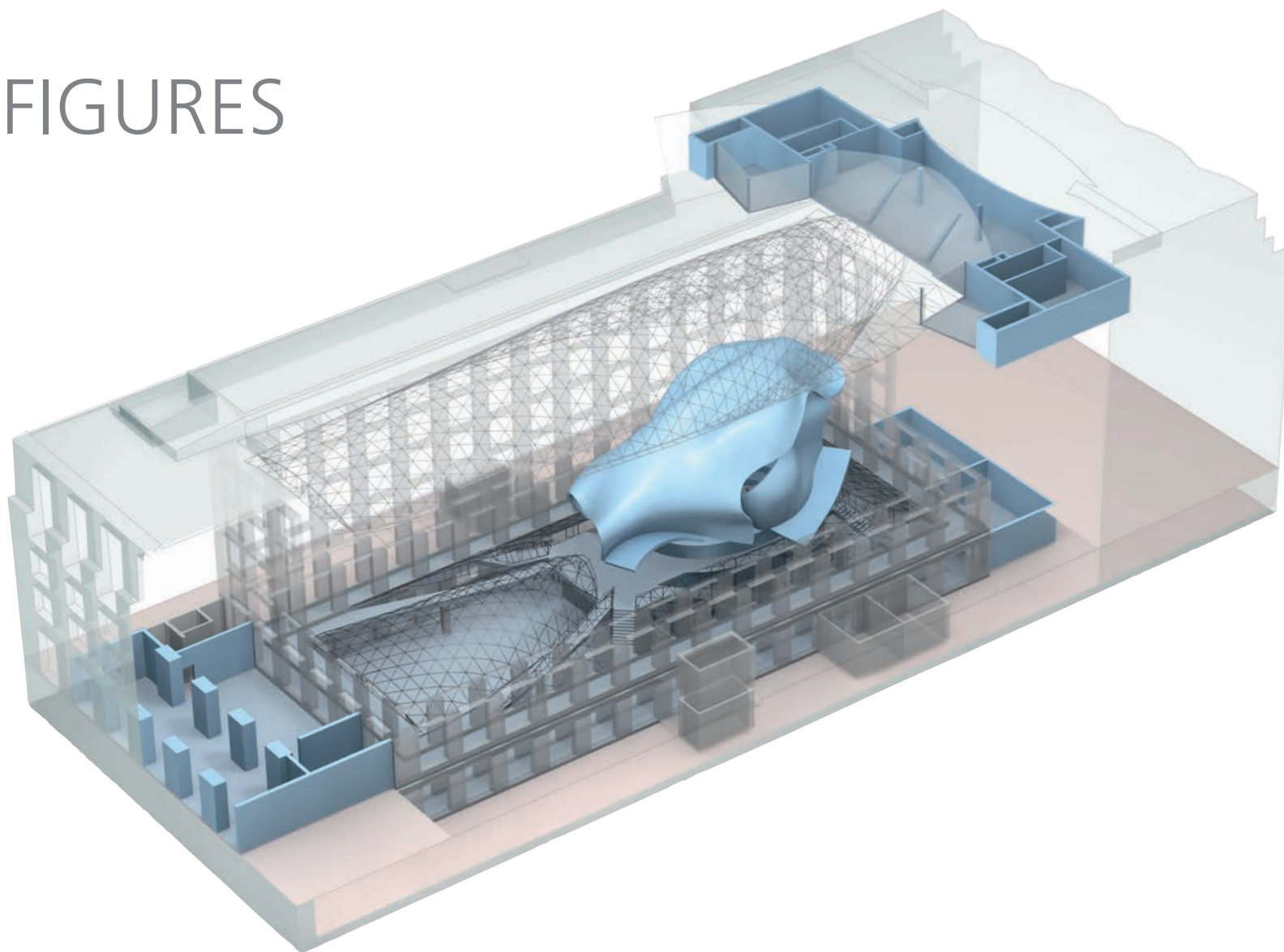


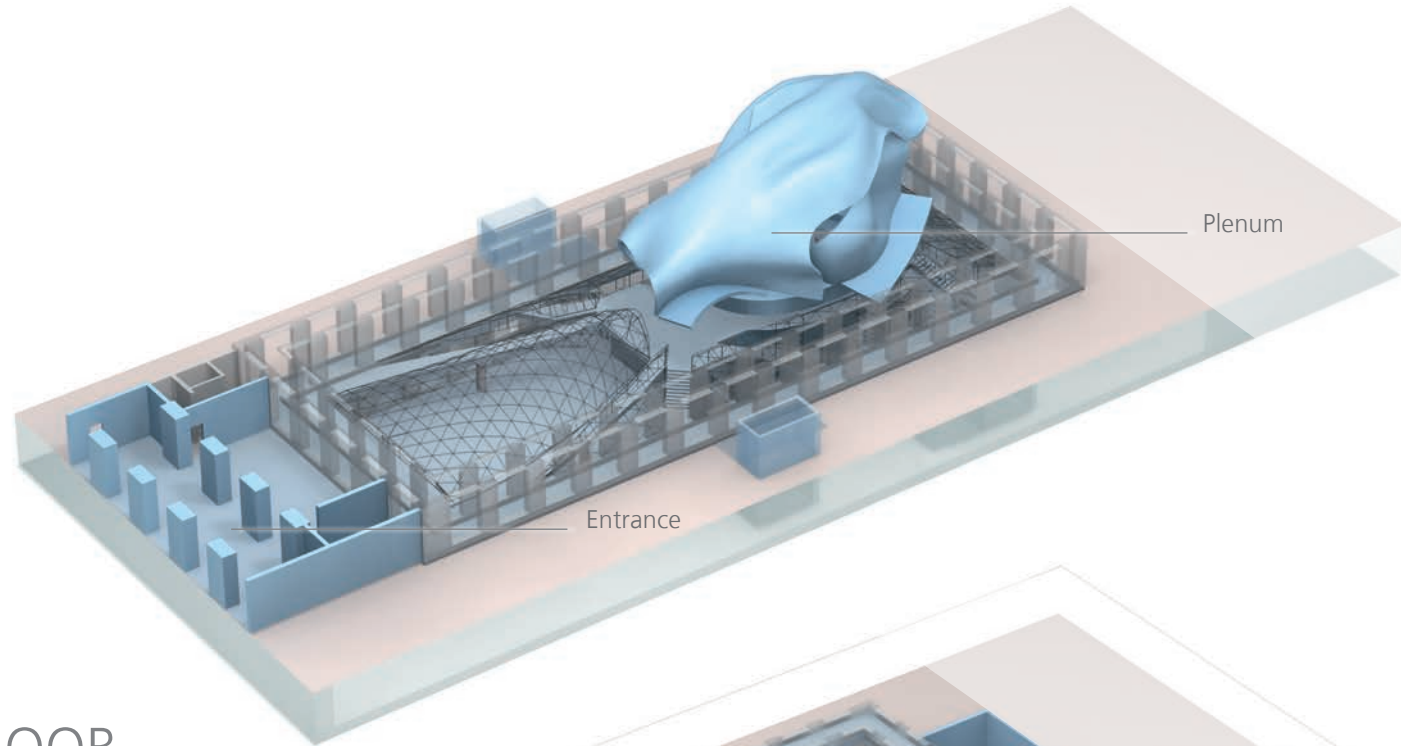
FACTS & FIGURES

EVENT PLANNER

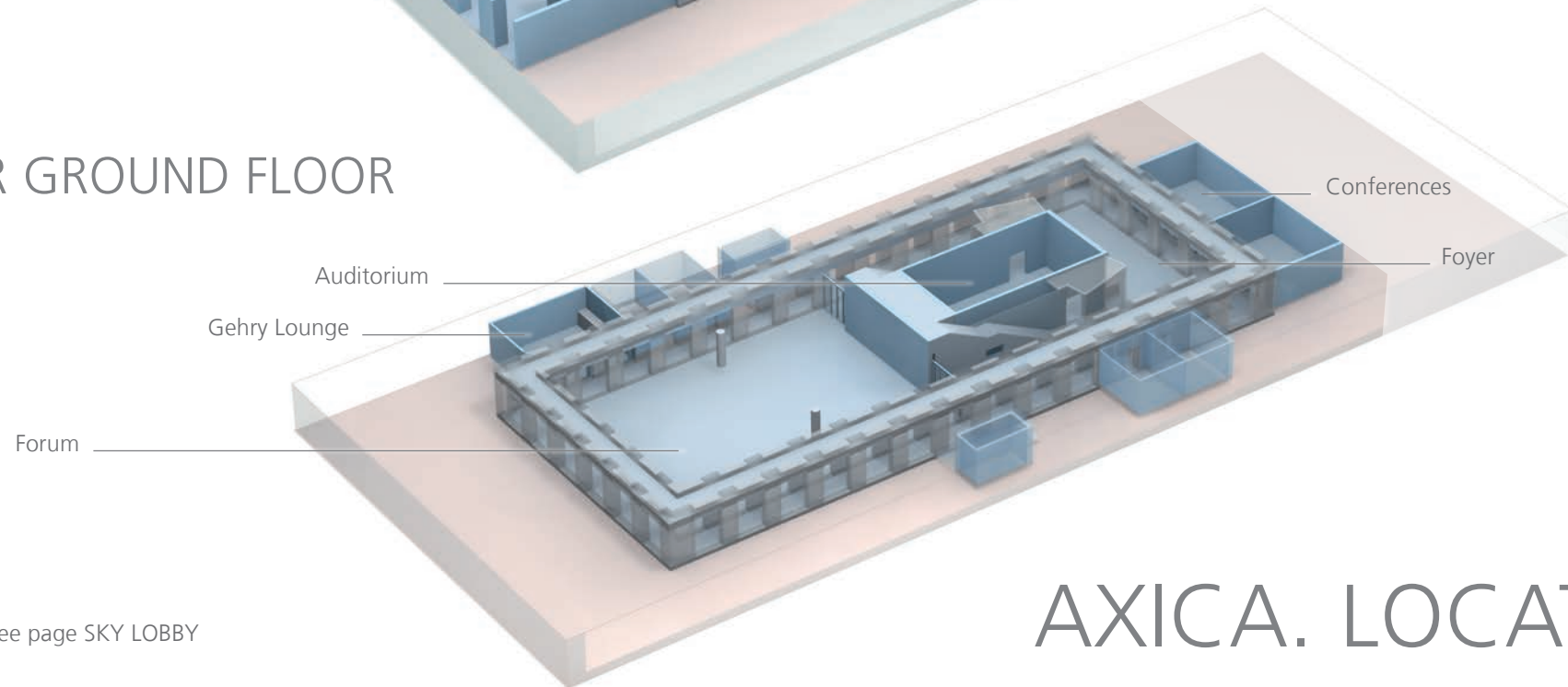


Here you will find all the details necessary for planning your event: floor plans, technical data and information on room design, capacities and services available at AXICA.

GROUND FLOOR




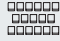



LOWER GROUND FLOOR



TOP FLOOR » see page SKY LOBBY

AXICA. LOCATION

CAPACITIES OVERVIEW

SPACES	Area	SEATING CAPACITY:	CLASSROOM 	THEATRE 	BANQUET 	RECEPTION 	BOARDROOM 
PLENUM	188 m ²		74 delegates	80 delegates	–	–	20 delegates
FORUM	530 m ²		250 delegates	500 delegates	350 delegates	500 delegates	–
FOYER	200 m ²		–	–	–	–	–
AUDITORIUM 1 & 2*	107 m ²		60 delegates	100 delegates	–	–	30 delegates
CONFERENCES 1 & 2*	68 m ²		30 delegates	55 delegates	–	–	25 delegates
CONFERENCES 3 & 4*	55 m ²		24 delegates	40 delegates	–	–	20 delegates
GEHRY LOUNGE	70 m ²		–	–	35 delegates**	35 delegates	–
SKY LOBBY	204 m ²		40 delegates	80 delegates	50 delegates	80 delegates	–
SKY LOUNGES	46 m ²		–	25 delegates	12 delegates	20 delegates	18 delegates

* flexible partitioning ** café seating

INTERIOR & FURNISHINGS

- » fully air-conditioned rooms
- » double glass roof allows natural lighting on all floors
- » colour: red carpet, parquet flooring in arcades and Plenum, pine wall panels
- » white lighting, partly dimmable
- » designer furniture
- » fitted bars in Foyer and Gehry Lounge
- » Facilities fully accessible for the disabled
- » access to lower ground floor via stairs and lifts
- » 4 passenger lifts, capacity 15 persons
- » building meets Green Meeting Standards (eco-friendly, energy-saving)

TECHNOLOGY & EQUIPMENT

- » AV equipment in Plenum and Auditorium
- » access to WLAN, telephone and fax
- » power points
- » cable infrastructure for TV and other media (Plenum, Auditorium and Conferences)
- » technical cooperation with event production experts
- » goods lift (1.40 x 2.50 x 2.40 m high), capacity 27 (maximum load 2,500 kg), space between opened doors 1.39 m
- » separate delivery area (4.50 m wide x 3.00 m high), maximum load 3,500 kg

SERVICES

- » exclusive catering and service team
- » in-house designers and decorators
- » in-house security team
- » hostesses (cloakroom service and admission)
- » entertainment
- » photographers

All services are also available at selected external locations. We are happy to supply other services on request.

NOTES

AXICA
Kongress-und Tagungszentrum
Pariser Platz 3 GmbH

Pariser Platz 3
D-10117 Berlin

Fon +49 30 200086-0
Fax +49 30 200086-701

info@axica.de
www.axica.de

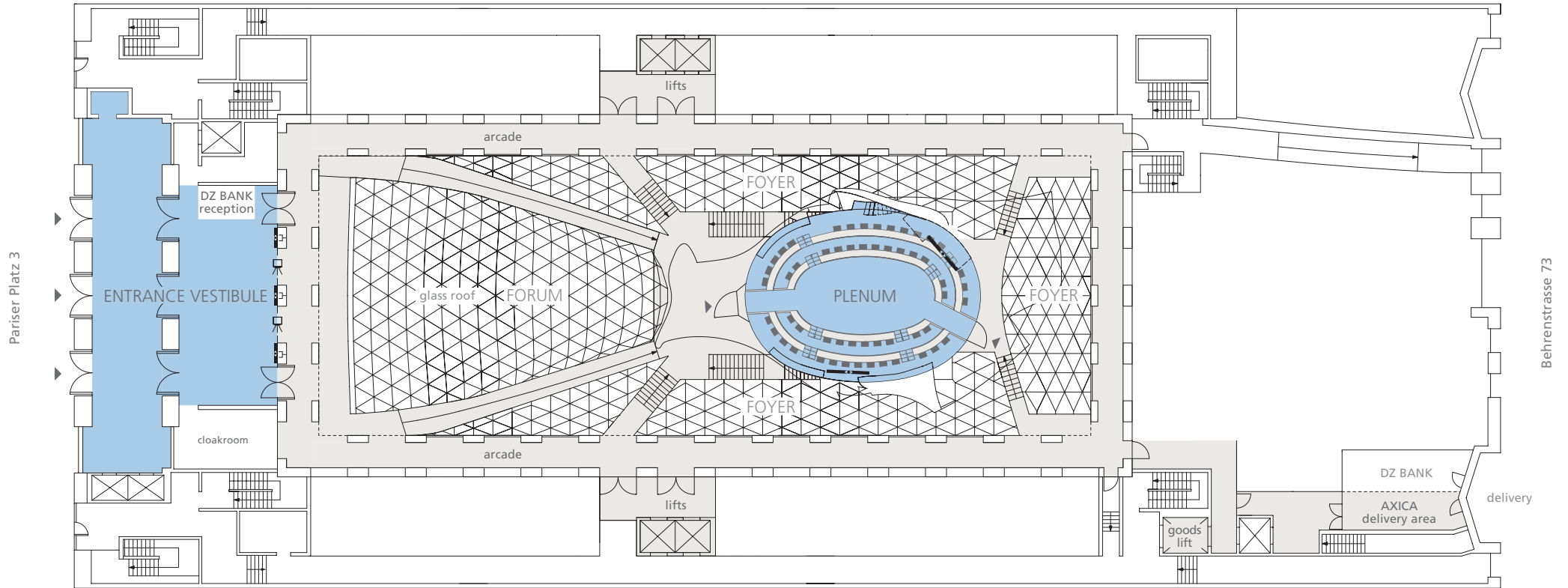
Delivery area / delivery address:
Behrenstrasse 73
D-10117 Berlin

 **AXICA**
A SUBSIDIARY OF DZ BANK



GROUND FLOOR

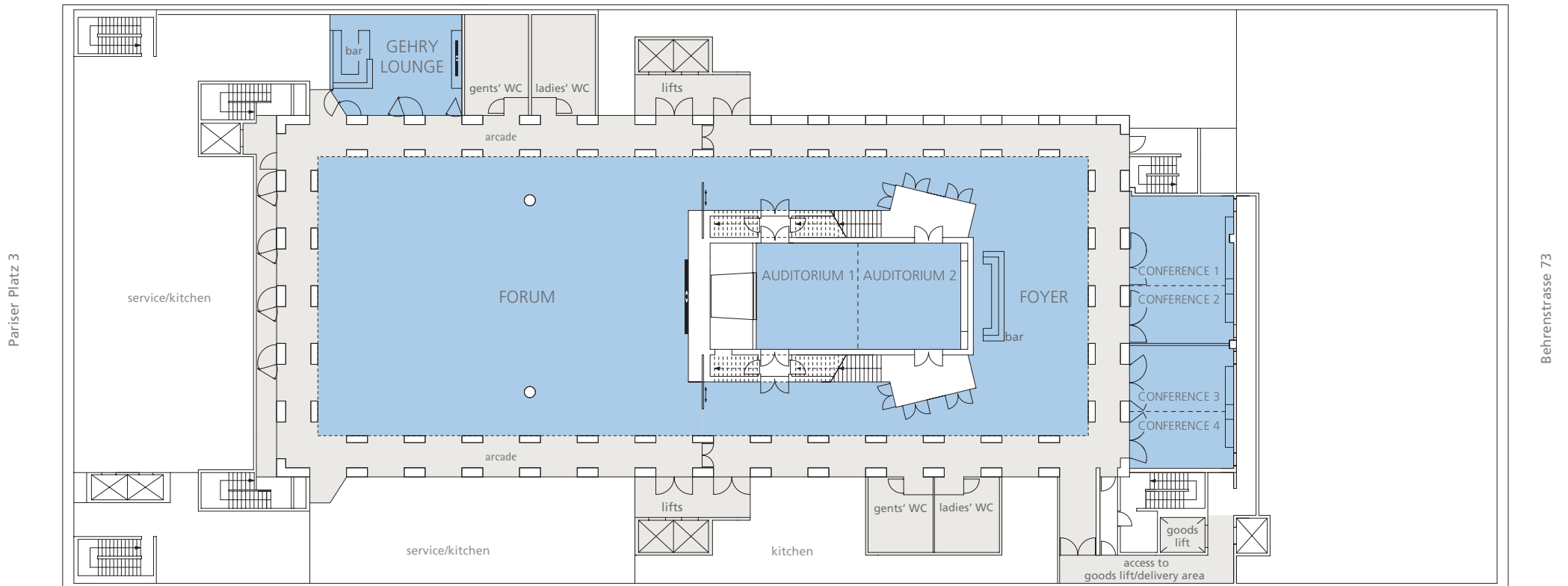
M 1:400





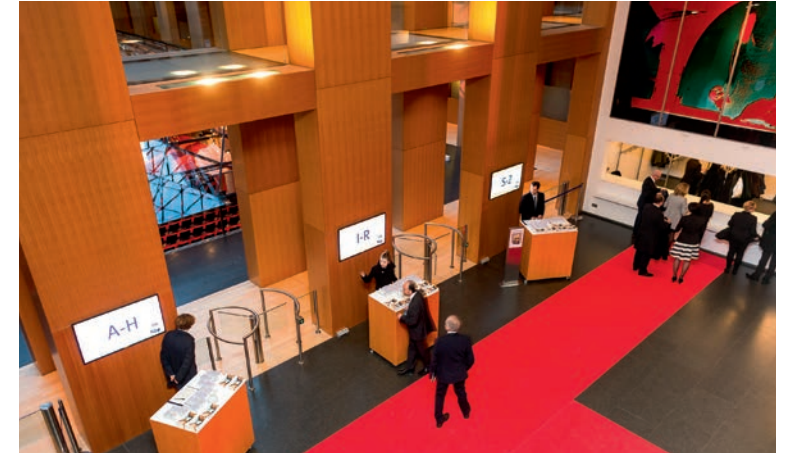
LOWER GROUND FLOOR

M 1:400



THE ENTRANCE VESTIBULE

GROUND FLOOR



EVENT TYPE

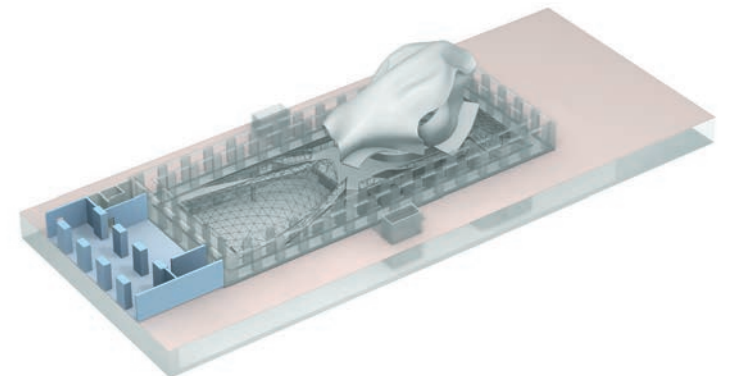
- » accreditation
- » cloakroom

INTERIOR & FURNISHING

- » Italian limestone façade
- » large steel glass doors
- » granite floor
- » access to Wi-Fi

EQUIPMENT & SERVICE

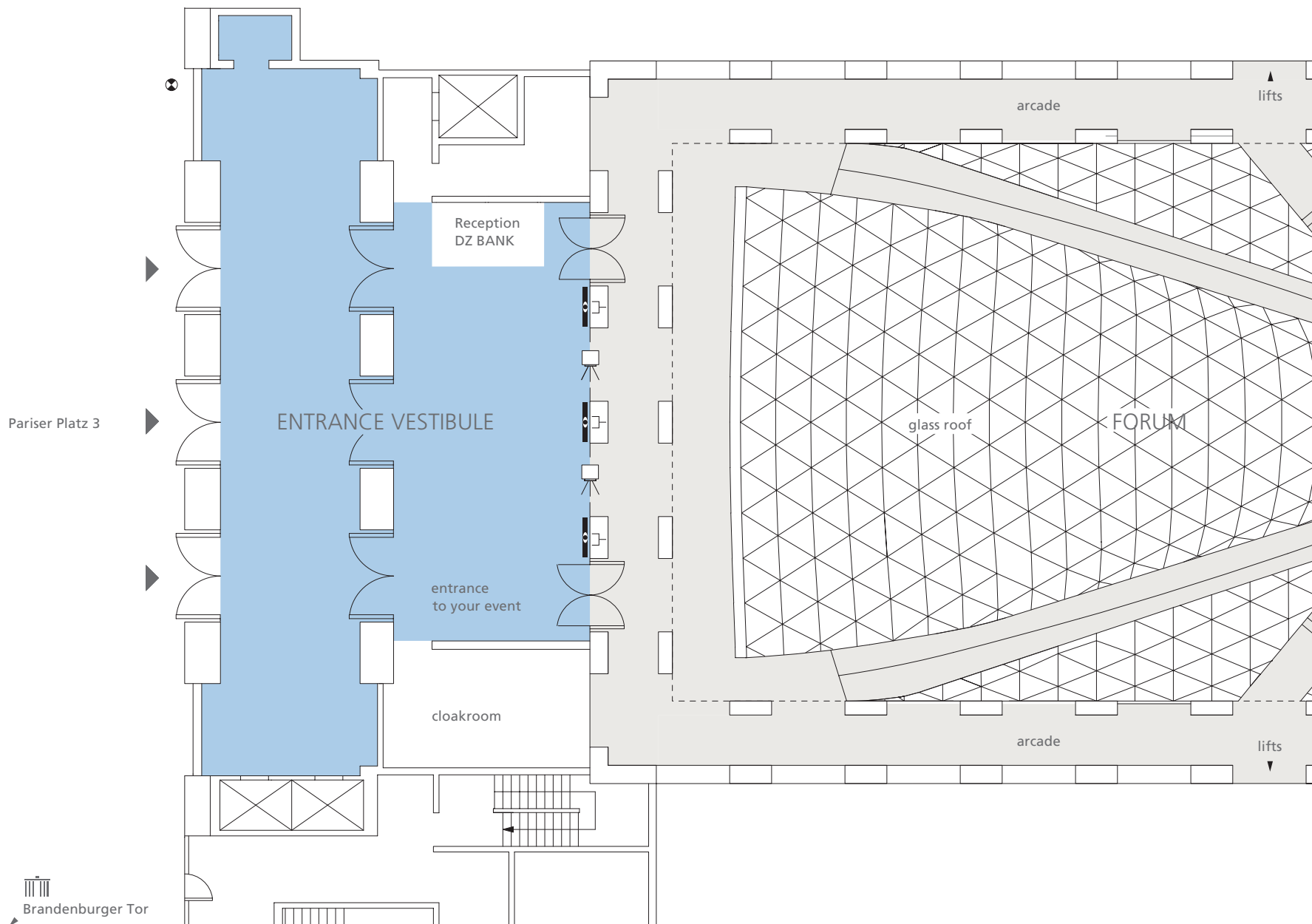
- » 3 LCD screens 47"
- » signage system
- » hostess and cloakroom service
- » in-house security
- » access to Wi-Fi





THE ENTRANCE VESTIBULE GROUND FLOOR

M 1:200



- TV and audio broadcasting system and floor cabling with data lines
- power point
- LCD screen 47"

THE PLENUM

GROUND FLOOR



EVENT TYPE

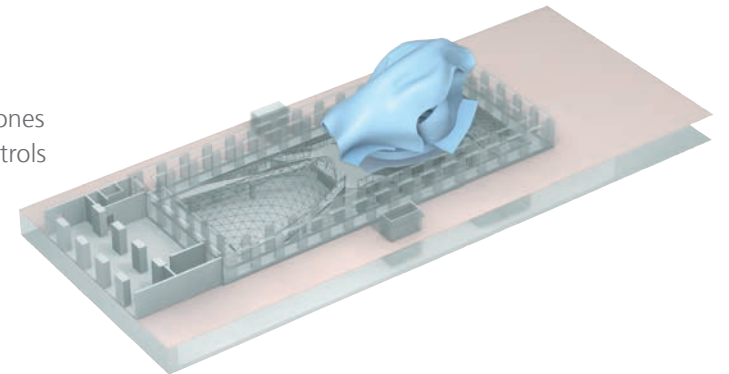
- » press conferences
- » workshops
- » meetings
- » lectures
- » plenary sessions
- » product presentations
- » podium discussions

INTERIOR & FURNISHING

- » flexible seating within the rows
- » variable speaker positioning
- » flexible seating on the parquet
- » boardroom table
- » sound-proofed wall panels
- » direct daylight

TECHNOLOGY & EQUIPMENT

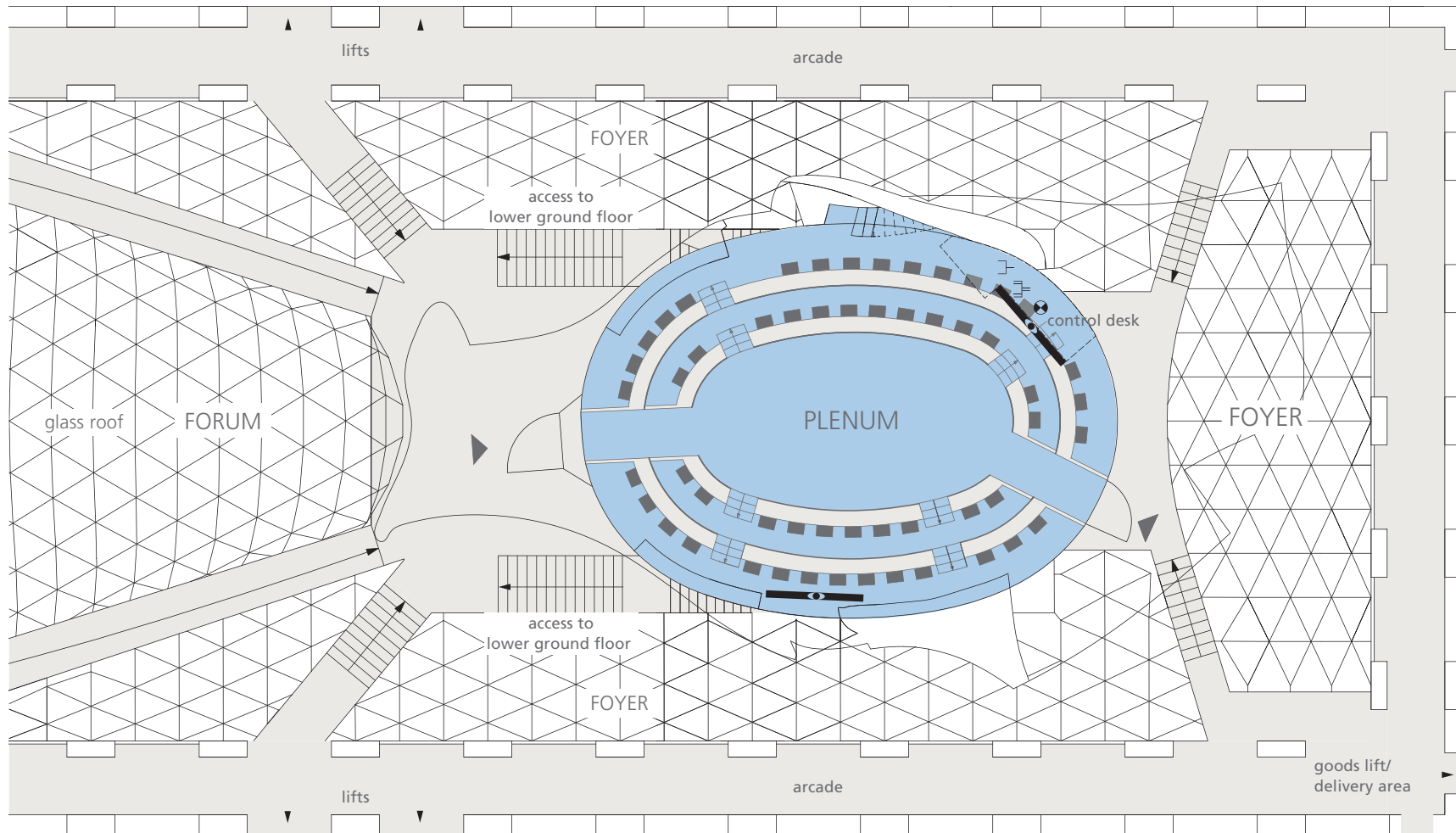
- » sound system with podium miking
- » conference 2-way intercom microphones
- » digital audio / 2-channel graphic controls inclusive external sources
- » 2 108" LCD screens
- » portable 15" preview monitors
- » LED speaker illumination
- » extensive infrastructure (optical fibre, network, XLR and power supply)







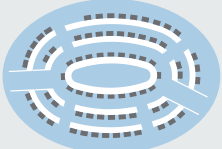
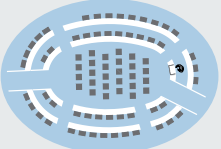
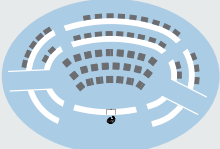


THE PLENUM GROUND FLOOR

M 1:200



-  access channels to tv and audio transmission
-  3-phase power point
-  power point
-  LCD screen 108"

DIMENSIONS	SEATING CAPACITY BOARDROOM	THEATRE	PODIUM
Area 188 m ²	 <p>maximum 74 delegates parquet 20 delegates seating rows 54 delegates</p>	 <p>maximum 80 delegates parquet 28 delegates seating rows 52 delegates</p>	 <p>maximum 54 delegates parquet 24 delegates seating rows 30 delegates</p>

THE FORUM

LOWER GROUND FLOOR



EVENT TYPE

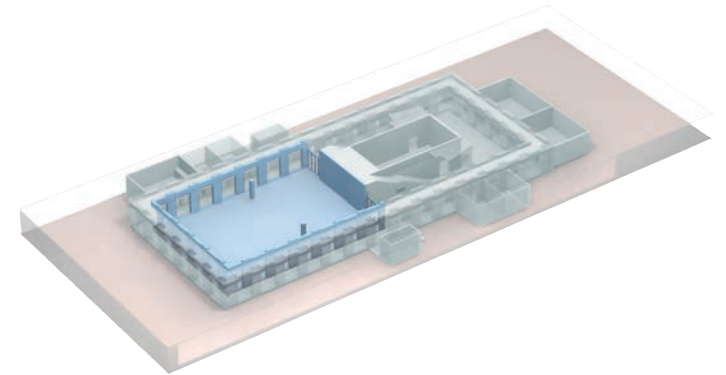
- » receptions
- » gala dinners
- » congresses
- » symposia
- » conferences
- » meetings
- » presentations
- » exhibitions
- » fashion shows
- » concerts

INTERIOR & FURNISHING

- » direct daylight, glass roof
- » red carpet
- » glass art installation
- » smooth-faced concrete wall (12 m wide and 5.58 m high)
- » access to Foyer and Gehry Lounge
- » designer furniture

TECHNOLOGY & EQUIPMENT

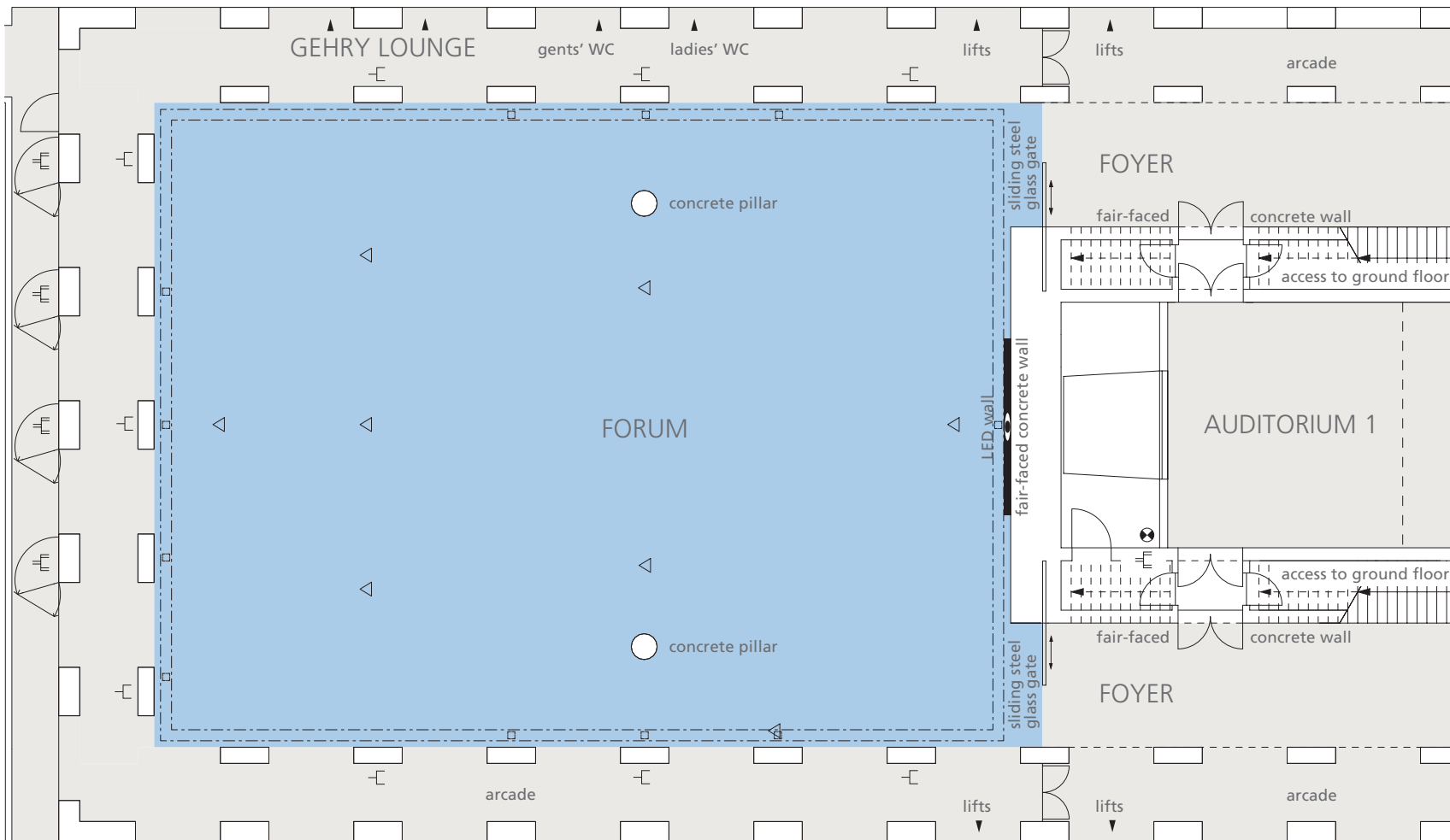
- » dimmable lighting
- » TV frequency links
- » access to Wi-Fi
- » power points
- » technical cooperation with event production experts
- » LED wall (W 4,40 x H 2,40 m)
- » invisible cable duct integrated in the floor











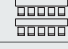


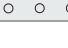
THE FORUM LOWER GROUND FLOOR

M 1:200



-  power point
-  3-phase power point
-  power, tel./data lines
-  access ways TV and audio broadcasting system
-  cable duct with port
-  LED wall
W 4,0 x H 2,1 m

DIMENSIONS	
total area	530 m ²
length	26,50 m
width	20,00 m
height	3,32 m – 5,58 m

SEATING CAPACITY		including podium (8 x 4 m)	
classroom		250 delegates	250 delegates
theatre		500 delegates	500 delegates
banquet		350 delegates	320 delegates
reception		500 delegates	500 delegates

THE FOYER

LOWER GROUND FLOOR

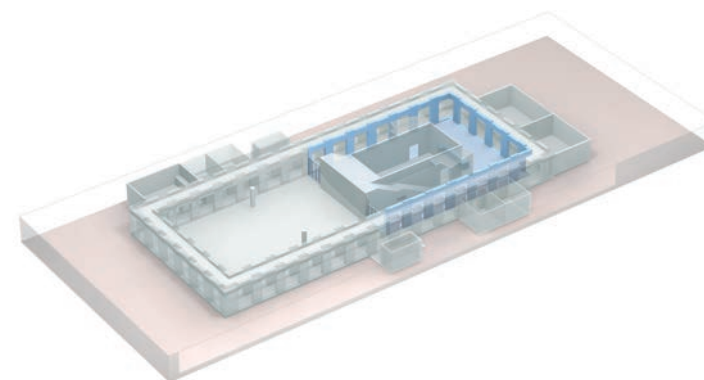


EVENT TYPE

- » receptions
- » coffee breaks
- » exhibitions & product presentations
- » cocktail bar & lounge
- » only available in combination with other spaces

INTERIOR & FURNISHING

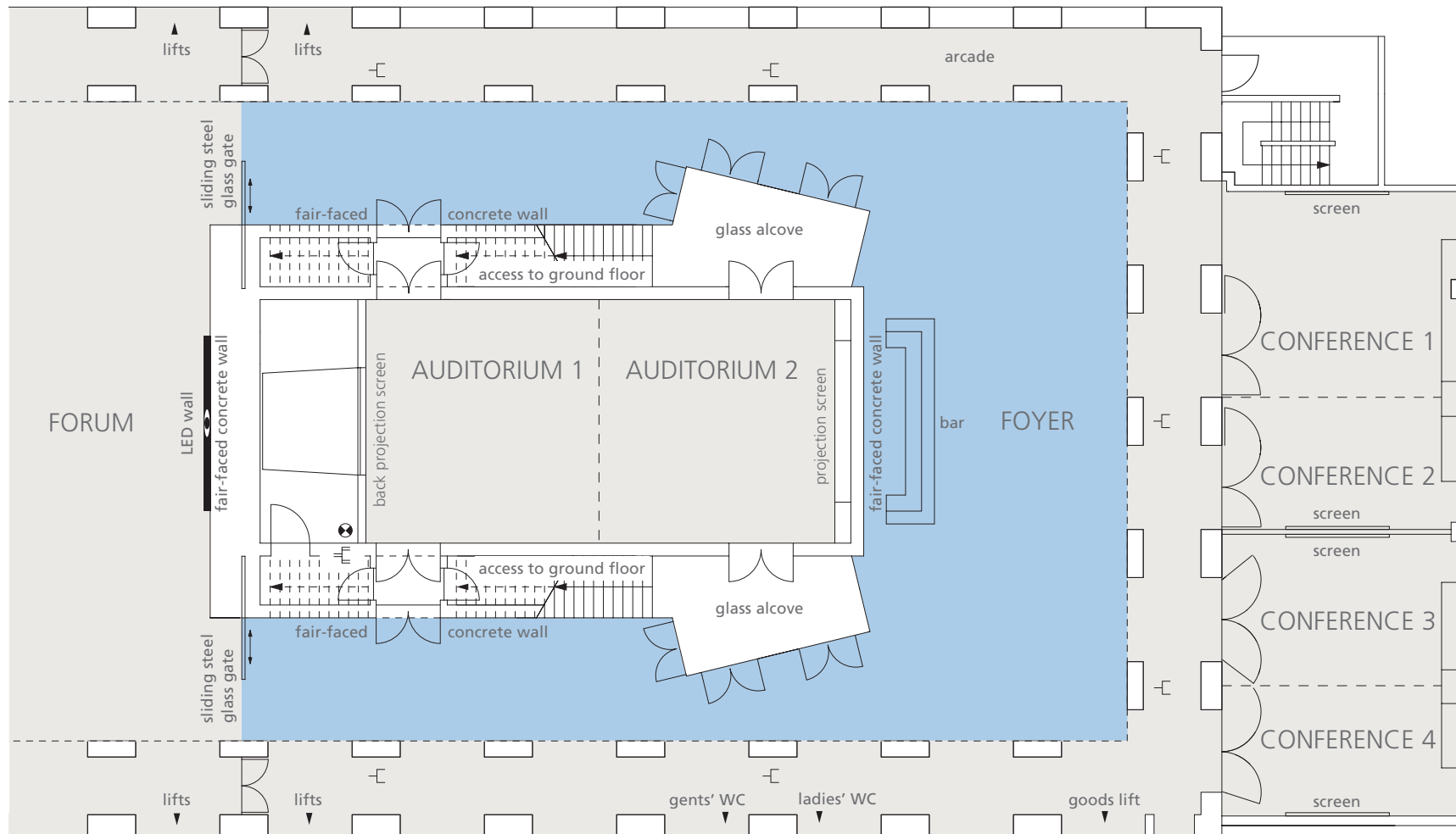
- » direct daylight
- » fitted bar with feature lighting
- » red carpet
- » arcade
- » access to all spaces
- » access to Wi-Fi

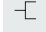
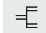






THE FOYER LOWER GROUND FLOOR

M 1:200



-  power point
-  3-phase power point
-  access ways TV and audio broadcasting system

DIMENSIONS	
total area	200 m ²

SEATING CAPACITY	
reception/buffet	 250 delegates
exhibition	depends on exhibition size

THE AUDITORIUM

LOWER GROUND FLOOR



EVENT TYPE

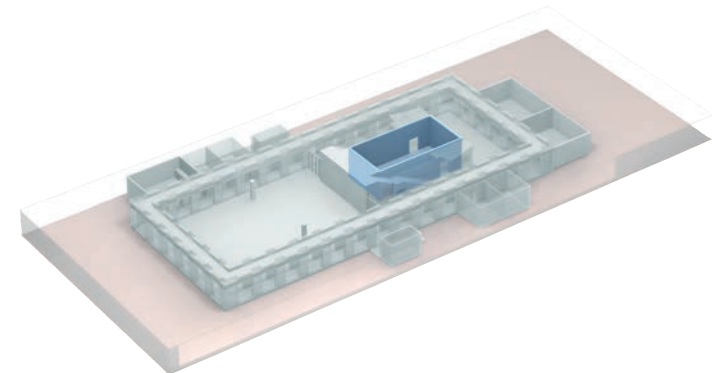
- » workshops
- » meetings
- » exhibitions & product presentations
- » additional service area
- » press conferences
- » lectures

INTERIOR & FURNISHING

- » flexible room concept; can be divided into two separate areas
- » indirect lighting
- » under-floor air-conditioning
- » red carpet

TECHNOLOGY & EQUIPMENT

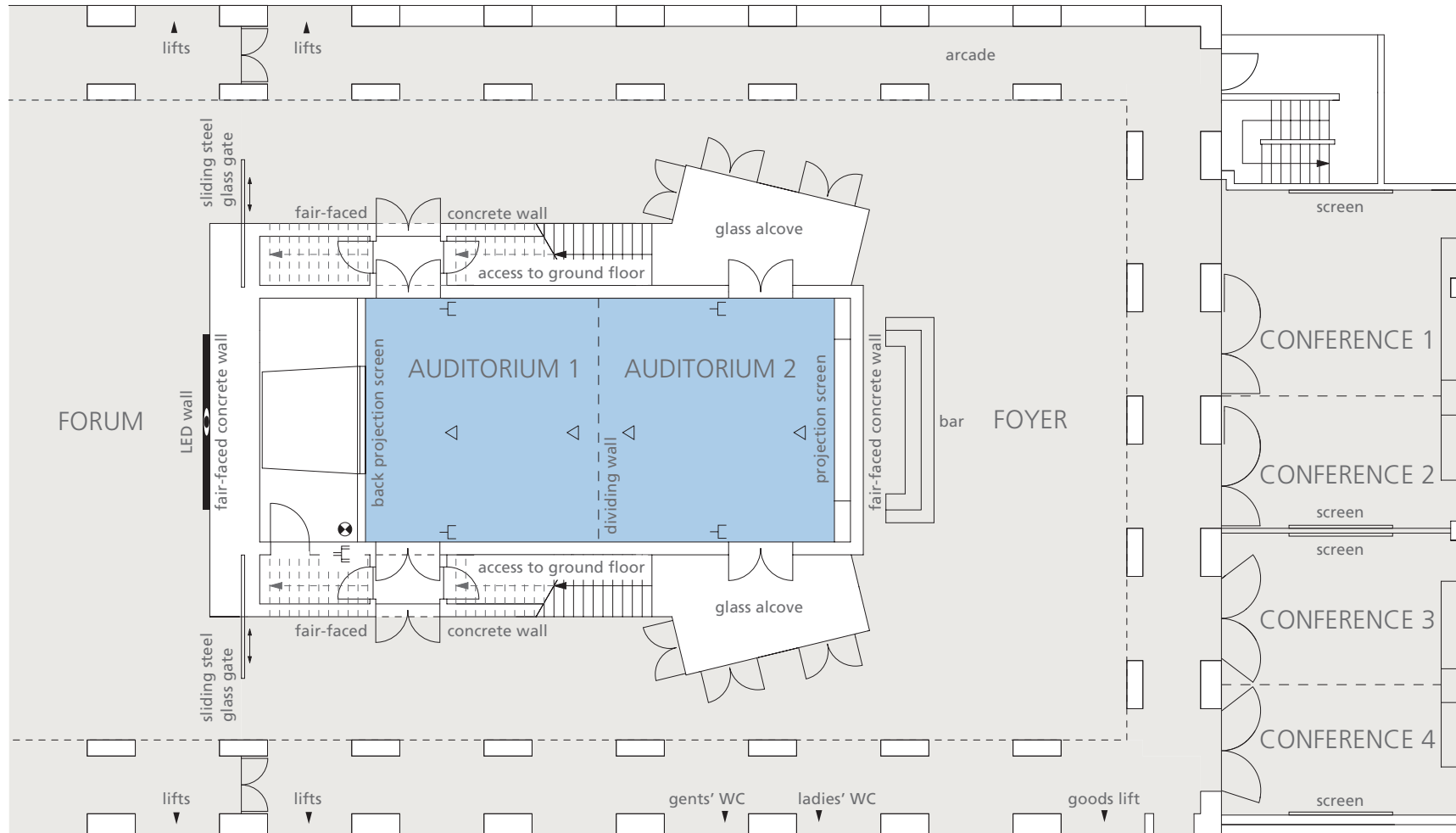
- » 150'' back projection screen (3.81 m diagonal, format 4:3)
- » additional integrated projection screen at the front
- » TV frequency links
- » access to Wi-Fi
- » technical cooperation with event production experts

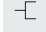
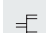










THE AUDITORIUM LOWER GROUND FLOOR

M 1:200



-  power point
-  3-phase power point
-  power, tel./data lines
-  access ways TV and audio broadcasting system

DIMENSIONS	Auditorium 1 & 2	Auditorium 1	Auditorium 2
total area	107,38 m ²	53,36 m ²	53,28 m ²
length	14,55 m	7,22 m	7,20 m
width	7,38 m	7,38 m	7,38 m
height	4,55 m	4,55 m	4,55 m

		Auditorium 1 & 2	Auditorium 1	Auditorium 2
SEATING CAPACITY				
classroom		60 delegates	20 delegates	20 delegates
boardroom		30 delegates	16 delegates	16 delegates
theatre		100 delegates	35 delegates	35 delegates
U-shape		30 delegates	12 delegates	12 delegates

THE CONFERENCES

LOWER GROUND FLOOR



EVENT TYPE

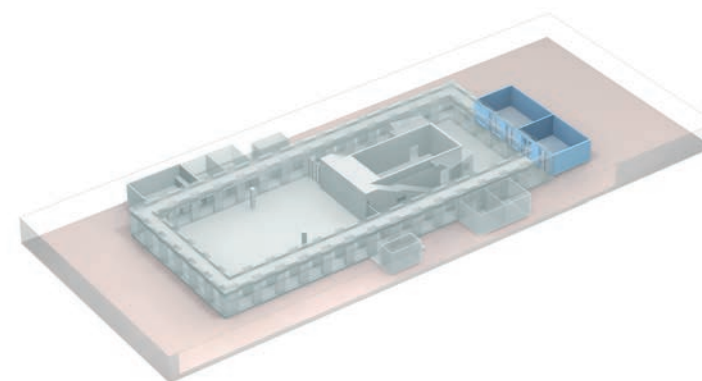
- » conferences
- » workshops
- » presentations
- » lounge
- » exhibitions
- » additional service area

INTERIOR & FURNISHING

- » indirect daylight
- » flexible room concept;
partition walls
- » red carpet

TECHNOLOGY & EQUIPMENT

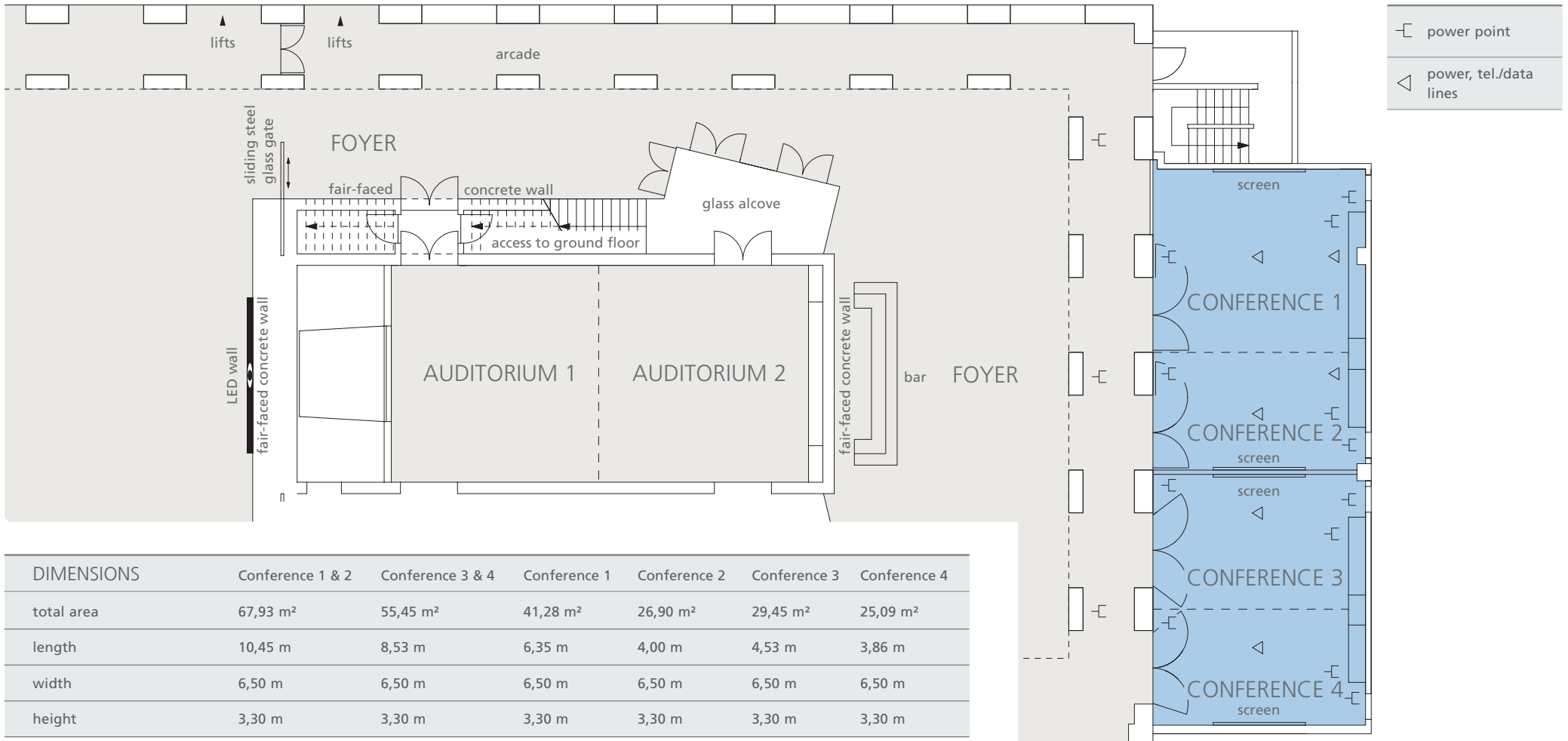
- » fixed projection screens
- » access to Wi-Fi
- » floor cabled with power points
- » TV frequency links








THE CONFERENCES LOWER GROUND FLOOR

M 1:200



DIMENSIONS	Conference 1 & 2	Conference 3 & 4	Conference 1	Conference 2	Conference 3	Conference 4
total area	67,93 m ²	55,45 m ²	41,28 m ²	26,90 m ²	29,45 m ²	25,09 m ²
length	10,45 m	8,53 m	6,35 m	4,00 m	4,53 m	3,86 m
width	6,50 m	6,50 m	6,50 m	6,50 m	6,50 m	6,50 m
height	3,30 m	3,30 m	3,30 m	3,30 m	3,30 m	3,30 m

SEATING CAPACITY	Conference 1 & 2	Conference 3 & 4	Conference 1	Conference 2	Conference 3	Conference 4
classroom 	30 delegates	24 delegates	-	-	-	-
boardroom 	25 delegates	20 delegates	12 delegates	10 delegates	10 delegates	10 delegates
theatre 	55 delegates	40 delegates	-	-	-	-

THE GEHRY LOUNGE

LOWER GROUND FLOOR

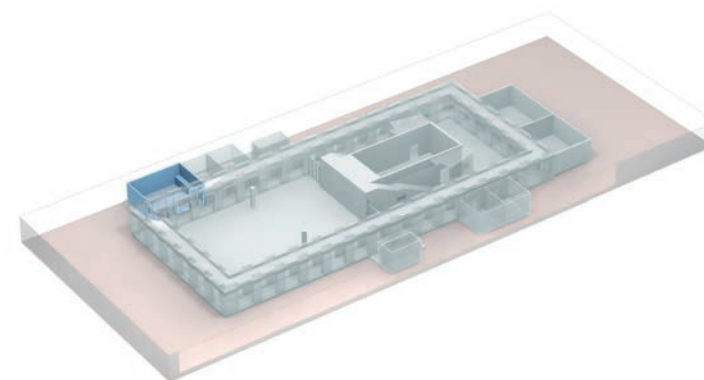


EVENT TYPE

- » cocktail bar & lounge
- » receptions
- » coffee breaks
- » VIP lounge

INTERIOR & FURNISHING

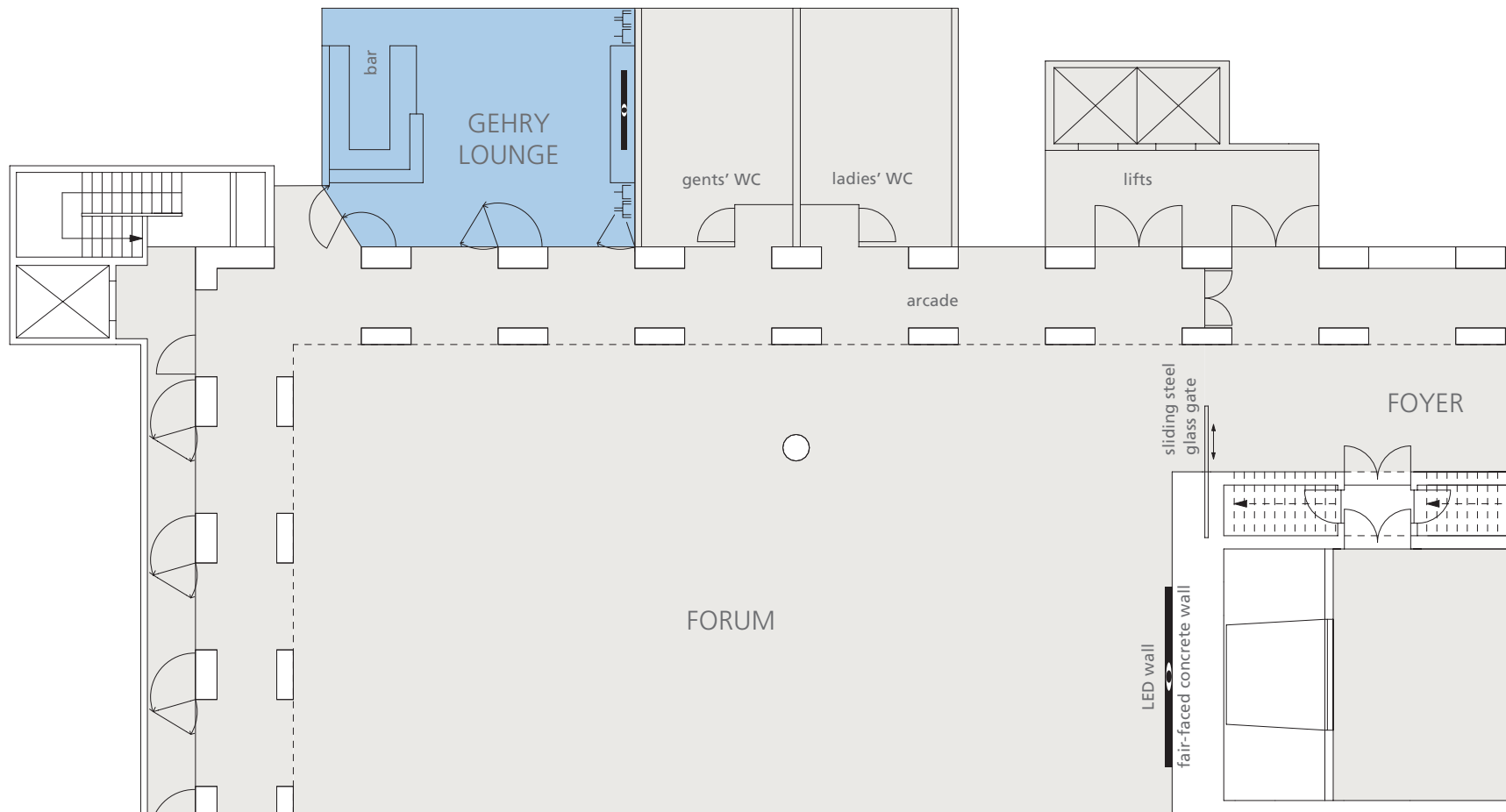
- » wooden seating designed by Frank O. Gehry
- » fitted coffee and cocktail bar
- » parquet floor
- » LED screen 58"
- » access to Wi-Fi










THE GEHRY LOUNGE LOWER GROUND FLOOR

M 1:200



-  power point
-  3-phase power point
-  LED screen 58"

DIMENSIONS	
total area	70 m ²
length	9,20 m
width	7,10 m
height	4,50 m

SEATING CAPACITY		
café seating		35 delegates
reception		35 delegates

THE SKY LOBBY

WITH SKY LOUNGE WEST & EAST

TOP FLOOR



EVENT TYPE

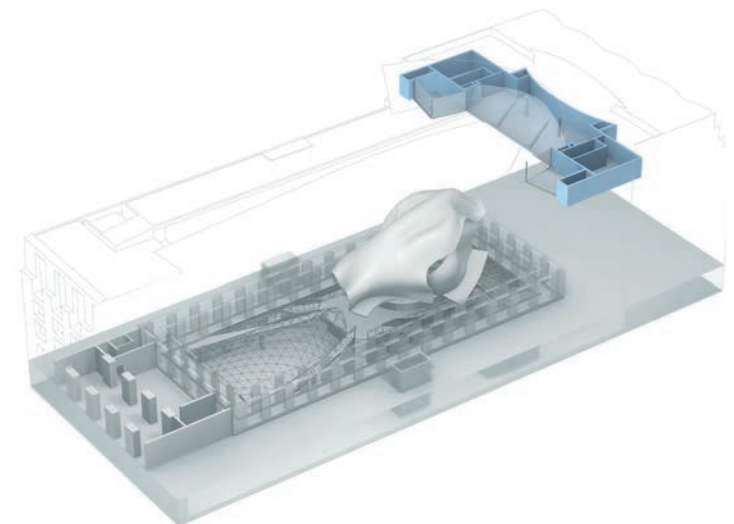
- » receptions
- » dinner
- » workshops
- » exhibitions
- » presentations
- » conferences
- » film set

INTERIOR & FURNISHING

- » open, expansive atmosphere on the 6th floor
- » direct daylight, glass front
- » view of the building's Atrium and the rooftops of Berlin
- » at eye-level with the Quadriga on the Brandenburg Gate and the dome of the Reichstag building
- » fully air-conditioned and ventilated
- » separate cloakroom and toilets

TECHNOLOGY & EQUIPMENT

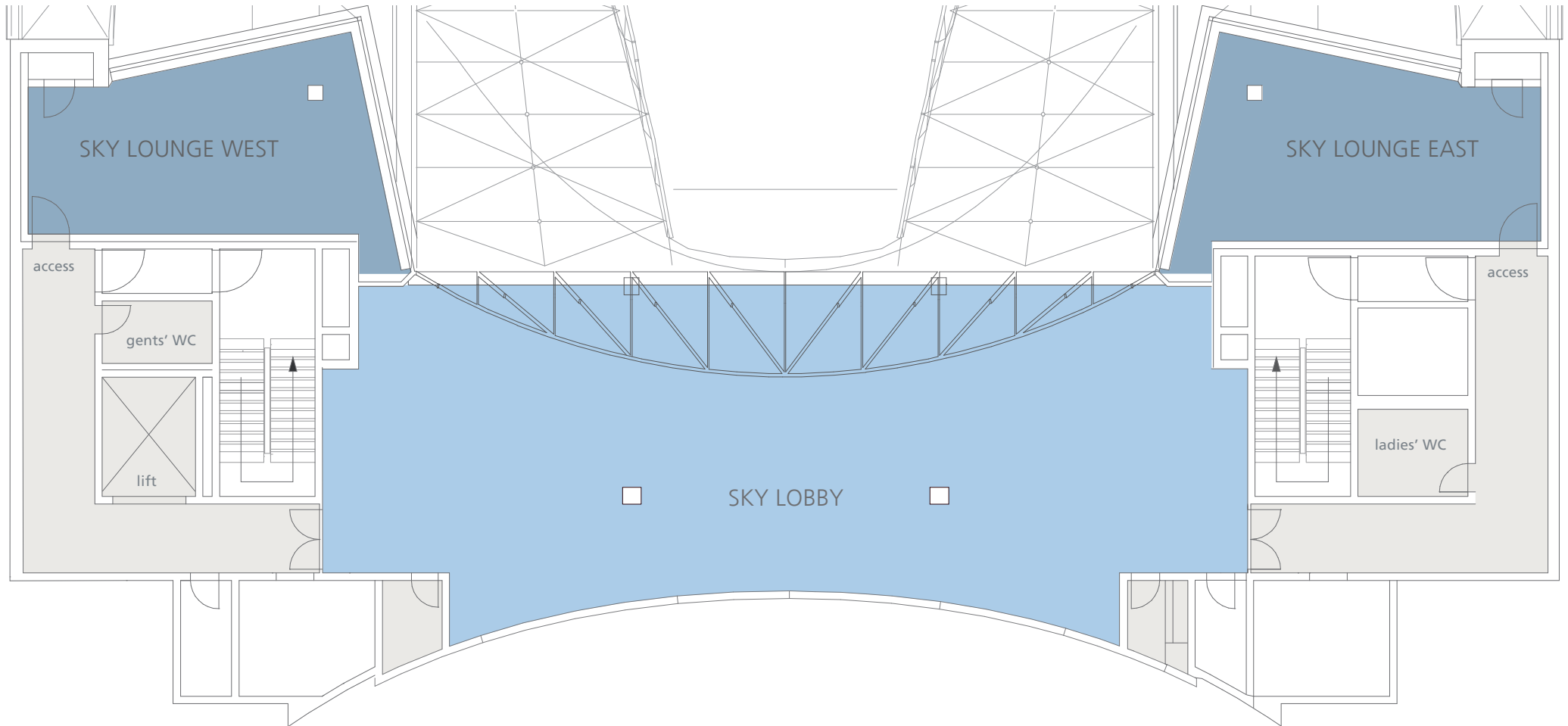
- » coloured interior lighting
- » powered adjustable spotlights
- » WiFi access available
- » power connections 220 + 380 V
- » technical cooperation with event production experts





THE SKY LOBBY WITH SKY LOUNGE WEST & EAST | TOP FLOOR

M 1:120



DIMENSIONS SKY LOBBY	
total area	204 m ²
length	24,80 m
width	8,14 - 9,65 m
height	4,35 - 5,59 m

SEATING CAPACITY SKY LOBBY		
classroom		40 delegates
theatre		80 delegates
dinner/buffet		50 delegates
reception		80 delegates

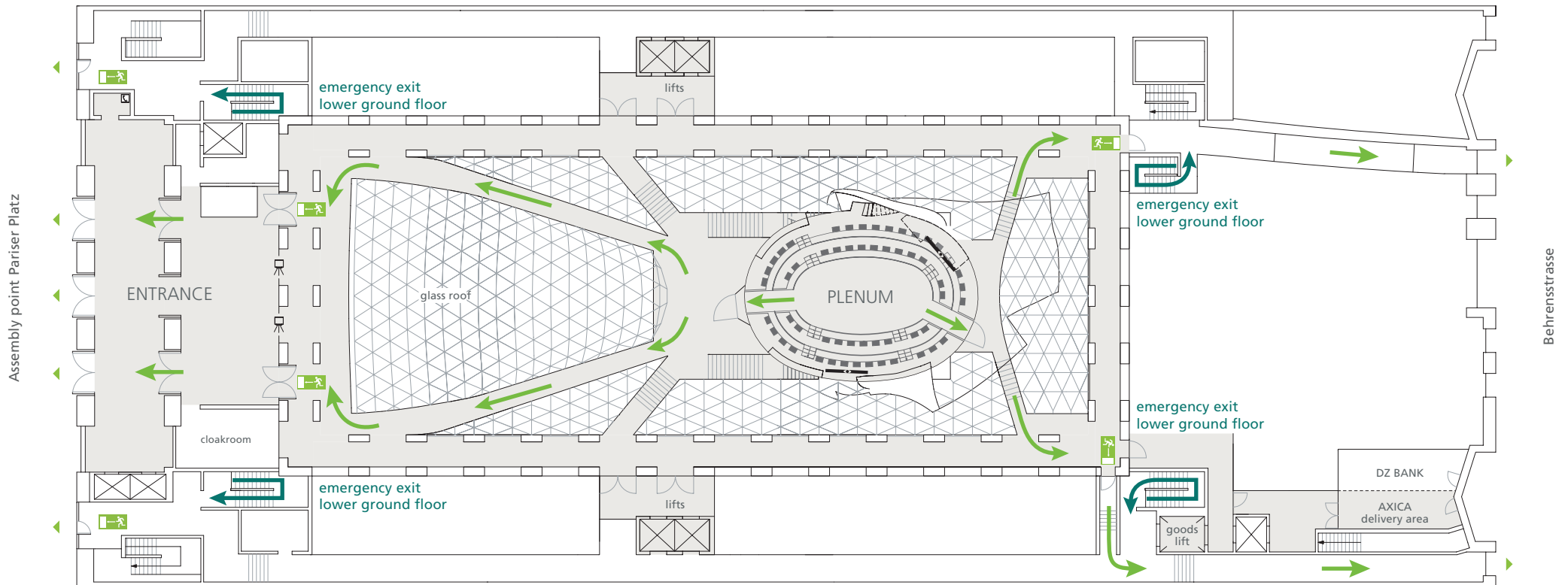
DIMENSIONS SKY LOUNGE	
total area	46 m ²
length	9,00 - 10,00 m
width	4,00 - 5,80 m
height	3,00 m

CAPACITY SKY LOUNGE		
boardroom		18 delegates
theatre		25 delegates
dinner		12 delegates
reception		20 delegates



EVACUATION PLAN

GROUND FLOOR



IN CASE OF EMERGENCY

- » Please remain calm.
- » Please evacuate the building via the designated emergency exits.
- » Pay attention to announcements.
- » Do not use lifts.
- » Proceed to the assembly point at Pariser Platz.
- » Await further instructions.



EVACUATION PLAN

LOWER GROUND FLOOR

