



THE BEVERLY HILLS HOTEL  
SUITES

Luxurious accommodation, impeccable service,  
unparalleled beauty



## CONTENTS

An introduction to the hotel

Suites in the main building

Premier Suite

Paul Williams Suite

Presidential Suite

Bungalows and Garden Suites

Legendary Bungalows

Presidential Bungalows

# WELCOME TO THE BEVERLY HILLS HOTEL

The Beverly Hills Hotel presides majestically above the famed Sunset Boulevard on 12 acres of lush gardens among prime residential real estate in Beverly Hills. Since opening in 1912, the hotel has been known locally as the 'Pink Palace' and has welcomed royalty, world leaders, luminaries and legends. With impeccable service, unparalleled beauty, and access to renowned shopping and entertainment, this is the place to see and be seen.

With 210 rooms and suites, including 23 unique bungalows, our luxurious accommodation has become a part of Hollywood folklore, having hosted Marlene Dietrich, Marilyn Monroe and countless other legendary icons.

History is honoured throughout the property by encompassing traditional architecture and elegant décor with uniquely designed spaces. Enjoy The Beverly Hills Hotel Spa, the world-famous Polo Lounge or a day by the pool in a private cabana. A stay at The Beverly Hills Hotel is an unforgettable experience.





## SUITES

There are 19 beautiful suites in the main building of The Beverly Hills Hotel, each one a masterpiece of style, comfort and luxury. The interiors feature classic wood furnishings, with fine fabrics and fittings of the highest quality. The suites are bathed in soft tones of peach, mauve, sage, yellow and beige, a palette which creates an atmosphere of calm and relaxation.

The suites vary in scale and accommodation. They include Beverly Hills Suites, measuring 72m<sup>2</sup>/780ft<sup>2</sup>, which offer a spacious living room, separate master bedroom, marble bathroom with Jacuzzi tub and a guest powder room.

The Rodeo Suites, Crescent Suites, Grand Deluxe and Premier Suites range in size from 117–132m<sup>2</sup>/1,265–1,425ft<sup>2</sup>. Features include a separate living room and master bedroom, marble bathrooms and guest powder room, some with a kitchen, dining table and fireplace. Suites with a balcony or patio offer gorgeous city or lush garden views.

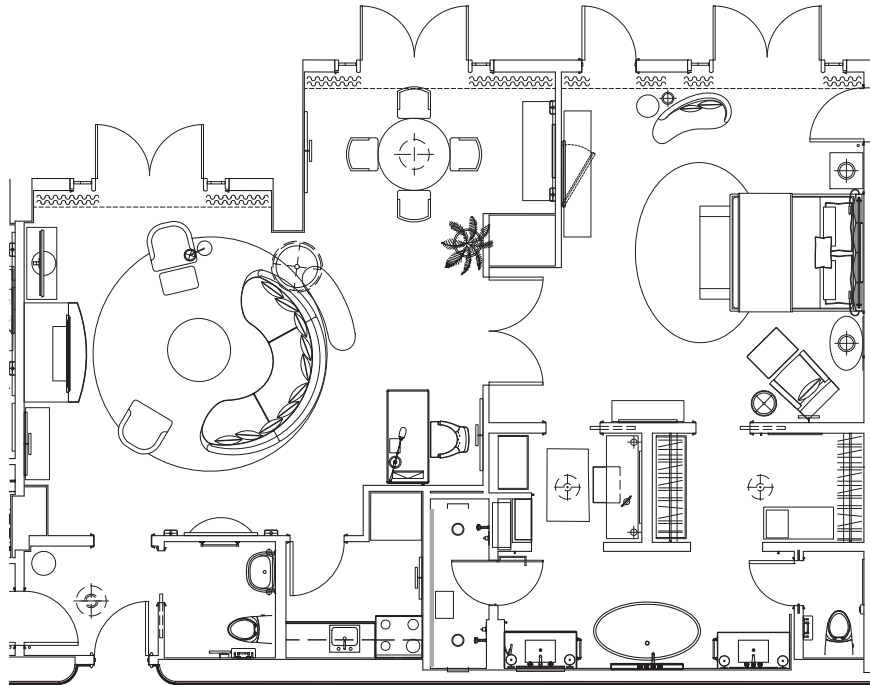
The exclusive Presidential Suite offers a spacious 180m<sup>2</sup>/1,935ft<sup>2</sup>, featuring a full kitchen, dining room and private balcony in addition to the luxurious interiors and amenities.











## PREMIER SUITE

Our Premier Suite features classic wood furnishings and décor in soft tones. Features include a large master bedroom and marble bathroom, spacious living room, full kitchen, fireplace, dining table and private patio.

Dimensions: 132m<sup>2</sup>/1,425ft<sup>2</sup>

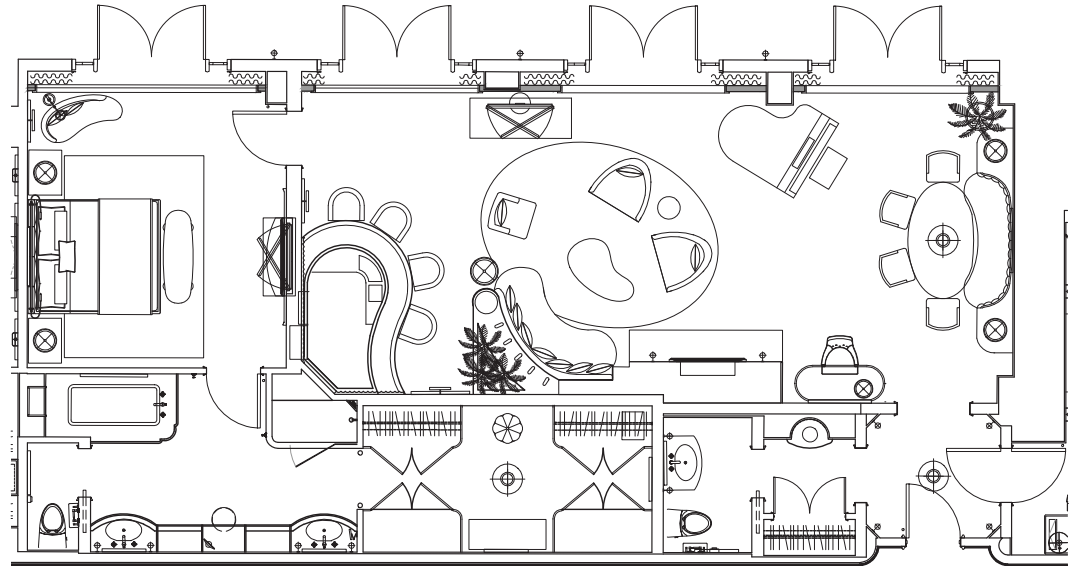
PREMIER SUITE



## PAUL WILLIAMS SUITE

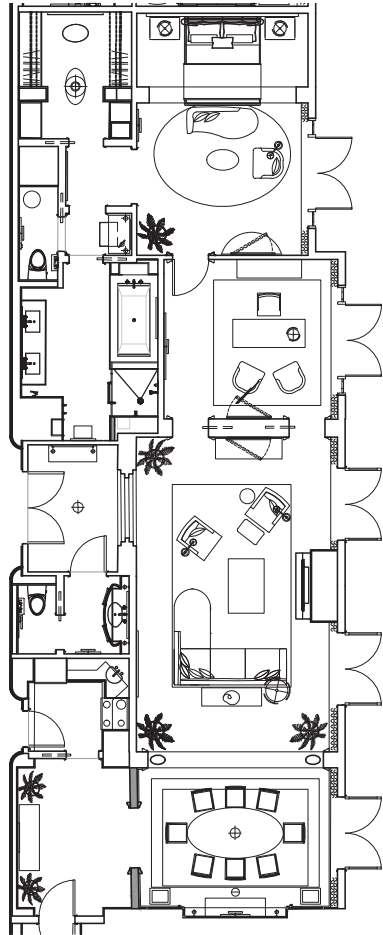
The Paul Williams Suite is named after the hotel's architect who built the Crescent Wing and redesigned the Polo Lounge and Fountain Coffee Room. When you book this retro suite, you're staying in a slice of history, as the style has remained the same since it was built in 1948.

Dimensions: 135m<sup>2</sup>/1,445ft<sup>2</sup>



PAUL WILLIAMS SUITE





## PRESIDENTIAL SUITE

This suite features classic wood furnishings and is bathed in soft tones of peach, mauve, sage, yellow and beige. The suite has one king-size bed, full vanity and dressing area, gas fireplace, a spacious living room with dining area, den, and marble bathrooms with bidet, Jacuzzi tub and two showers. There is a full kitchen and access to an additional banquet kitchen across the hall and a private balcony with a top-floor view towards downtown Los Angeles.

Dimensions: 180m<sup>2</sup>/1,935ft<sup>2</sup>

PRESIDENTIAL SUITE



## BUNGALOWS AND GARDEN SUITES

Accommodation within the bungalow gardens offers guests a taste of the ultimate Californian lifestyle, surrounded by lush greenery and featuring separate entrances through charming gates and winding pathways. Their residential design features up to four bedrooms, spacious living and dining areas, fireplaces and kitchens. Our most exclusive bungalows offer grand pianos, private garden patios, outdoor showers and plunge pools. Many of our bungalows have fascinating histories as well, with numerous Hollywood icons calling them home over the years.



GARDEN SUITE





CRESCENT BUNGALOW SUITE

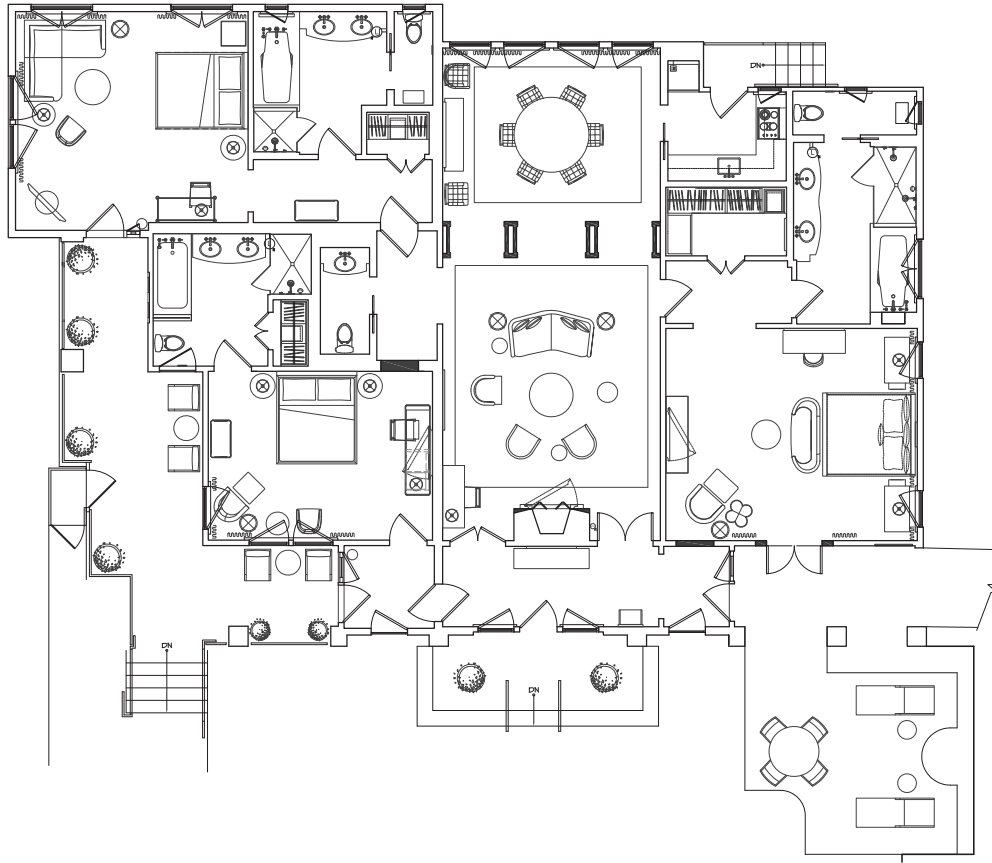


## BUNGALOW 1

Inspired by past guest Marilyn Monroe, the thoughtful design of this newly-restored bungalow incorporates aspects of Monroe's life and includes whimsical elements reflective of her most celebrated movie roles. Glamorous and youthful best describe the aesthetic of this bungalow that was a personal favourite of Marilyn Monroe and reflects the southern California lifestyle that she so enjoyed. With curvy furniture, bright and abstract floor coverings, colourful travertine stones and gold-leafed ceilings, this feminine space is both playful and sophisticated. Strong Jean Michel Frank influences pay homage to her use of his designs in her own home, including extensive use of parchment to envelop aspects of each room.

**GUESTS STAYING IN THIS BUNGALOW CAN ALSO ENJOY THE FOLLOWING MARILYN-INSPIRED SERVICES AND AMENITIES:**

- CHANEL N°5 fragrance bar
- CHANEL N°5 bath amenities
- Library featuring classic Marilyn Monroe films and books
- Marilyn Monroe champagne bubble bath experience featuring a bottle of Dom Pérignon
- Exclusive in-room dining menu featuring items such as DiMaggio's spaghetti and meatballs, and Marilyn's ice cream sundae



Dimensions: 160m<sup>2</sup>/1,720ft<sup>2</sup>

(Floorplan depicts optional connecting bedrooms)

BUNGALOW 1



## BUNGALOW 3

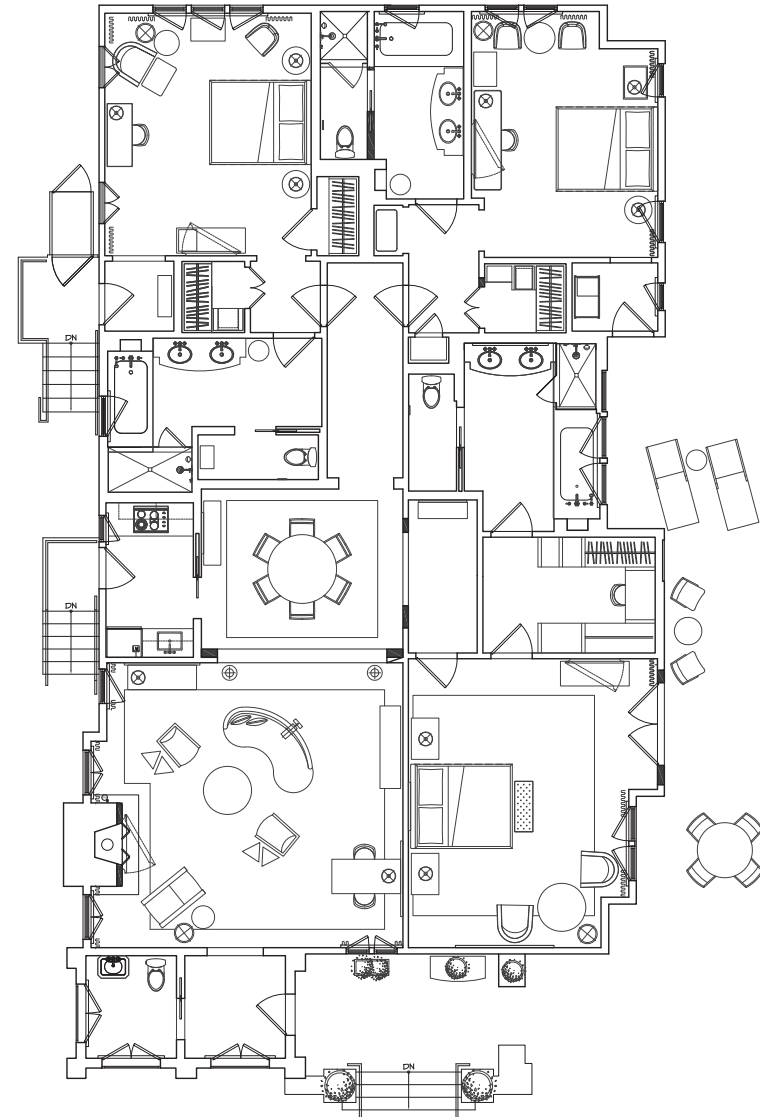
Bungalow 3 pays homage to one of the hotel's most famous residents, Howard Hughes, who lived in the bungalows on-and-off for 30 years. With stormy bold colours, dark stones, and rich exotic woods, this bungalow's look and feel is as mysterious and moody as the reclusive billionaire himself. Art Deco references include geometrics and rich sheens, conveying a masculine glamour through the use of glossy leathers, tailored shapes and blue bedroom walls.

### GUESTS STAYING IN THIS BUNGALOW CAN ALSO ENJOY HUGHES-INSPIRED AMENITIES:

- Aviation cocktail kit featuring Aviation gin
- Mini roast beef sandwiches (*Hughes used to request the hotel leave his roast beef sandwiches under a tree outside his bungalow almost every night*)
- A collection of model airplanes located throughout the suite

Dimensions: 150m<sup>2</sup>/1,620ft<sup>2</sup>

(Floorplan depicts optional connecting bedrooms)



BUNGALOW 3



## BUNGALOW 5

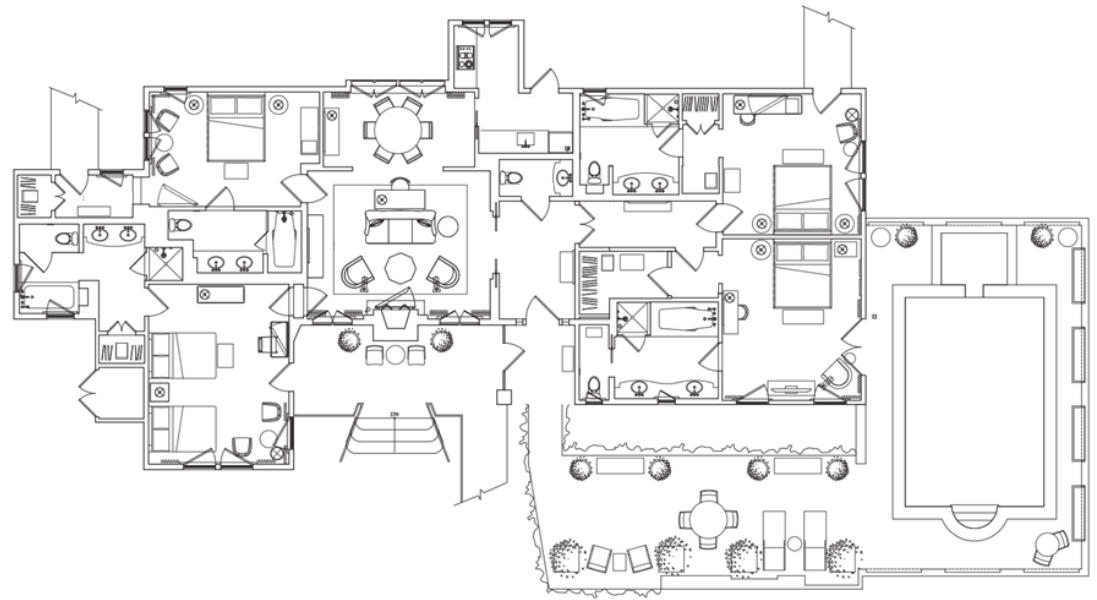
From European furniture and patterned wallpaper, to a peacock tile floor inlay and custom-painted console, the romantic look and feel of this space is as comforting as it is glamorous.

Gold foil details, sparkling light fixtures, and jewel-coloured Arnold Scassi-esque draperies also convey Hollywood's regency style.

The one-bedroom bungalow includes a full kitchen, living room with dining area, fireplace and half bath; master suite, full master bath and powder room; a large patio with outdoor seating area, private outdoor pool and Jacuzzi, and three adjoining bedroom options. State-of-the-art technology includes light and temperature control panels and Bang & Olufsen TVs.

Dimensions: 122m<sup>2</sup>/1,310ft<sup>2</sup>

(Floorplan depicts optional connecting bedrooms)



BUNGALOW 5



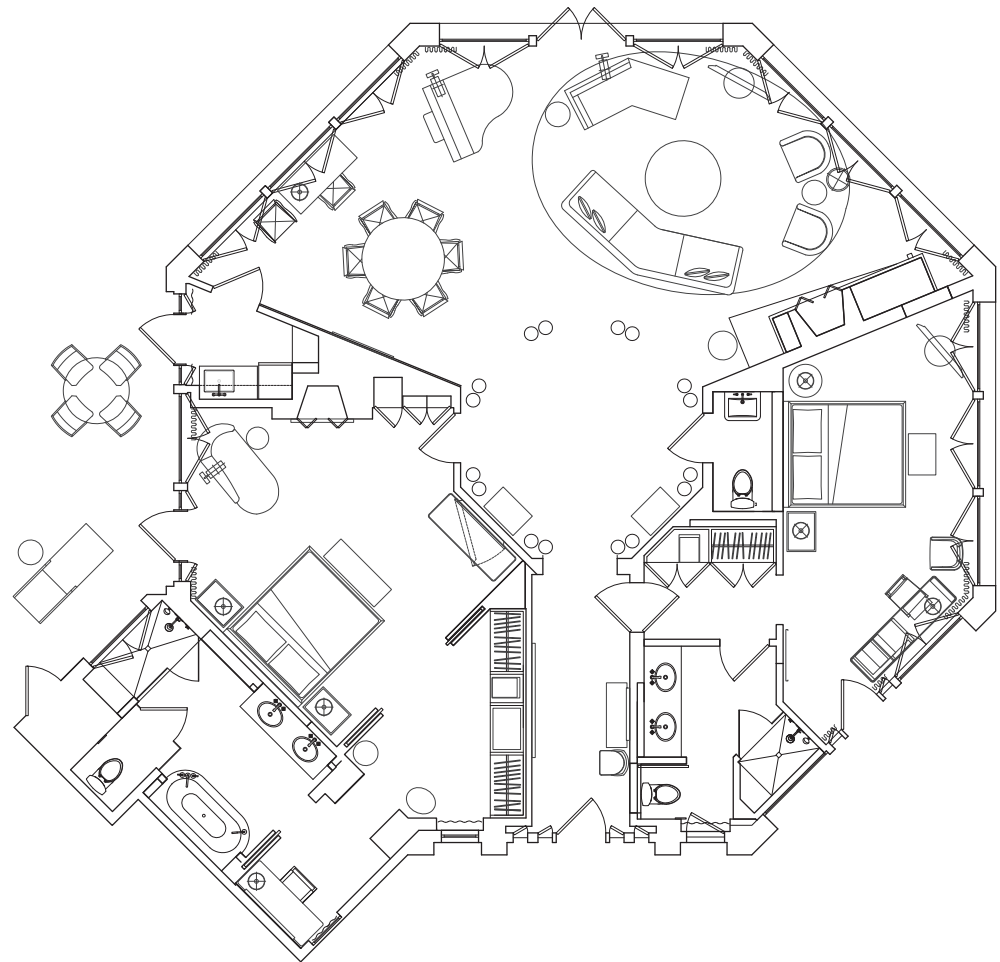
## BUNGALOW 22

The masculine design of this signature bungalow is inspired by iconic mid-century Palm Springs style. Its modern and contemporary décor features leather-wrapped columns, a stone and leather fireplace mantle and extensive use of wood varieties that include Douglas Fir ceilings and walnut furniture, desert colours and earthy neutral tones. The centrepiece of the bungalow is the expansive and open living room, featuring a piano and lounge-style seating.

The one-bedroom bungalow includes a living room with dining area, fireplace and half bath; master suite with fireplace, full master bath and dressing room, two private terraces and an adjoining bedroom option.

Dimensions: 155m<sup>2</sup>/1,665ft<sup>2</sup>

(Floorplan depicts optional connecting bedroom)



BUNGALOW 22



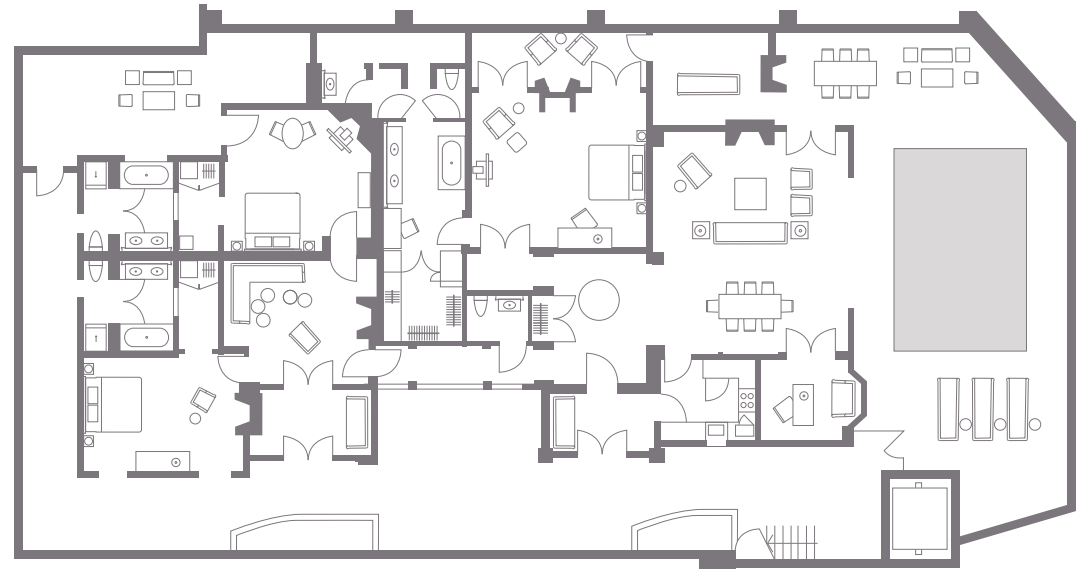
## PRESIDENTIAL BUNGALOW

Each of our two Presidential Bungalows is a modern interpretation of traditional design. Indoor and outdoor elements are seamlessly combined: retractable glass walls open the entire living room to an expansive outdoor patio featuring a private infinity pool with underwater music, a fireplace and outdoor showers.

These luxurious suites offer three bedrooms, three-and-a-half bathrooms with a steam shower, walk-in wardrobes, a spacious living room with 3.7m/12ft ceilings, a professional chef's kitchen with wine cooler and butler's pantry, separate office space, double-sided fireplaces, and dining table for 6–10 people. State-of-the-art technology includes 42" Bang & Olufsen™ televisions, personal climate controls, Wi-Fi and MP3 stations that can be heard throughout the suite, as well as multiple speakers and an alarm system with video camera security features.

Dimensions: 170m<sup>2</sup>/1,835ft<sup>2</sup>

(Floorplan depicts optional connecting bedrooms)



PRESIDENTIAL BUNGALOW

