
**#DCMOMENTS
LA GUIDE**

by

) (Dorchester Collection

WRITTEN AND PHOTOGRAPHED BY ESTHER LEE



I can't think of another city in the world that has perfect weather all year round. From picturesque beaches, to mountains, deserts, and forests (all within an hour's drive) — LA has it all. Where else can you surf in the morning and head to the mountains to snowboard in the afternoon?

As one of the most beautiful places to live, Los Angeles is a true melting pot.

LA offers a variety of different cultures in food, architecture, fashion, and art. Here are some of my favourite places to experience the true LA lifestyle.

- 01. MALIBU FARM**
- 02. EL MATADOR BEACH**
- 03. THE BEVERLY HILLS HOTEL**
- 04. SANTA MONICA BEACH**
- 05. CAFE FLORA**
- 06. ALFRED TEA ROOM**
- 07. HOTEL BEL-AIR**
- 08. RODEO DRIVE**
- 09. STAHL HOUSE**
- 10. THE ASSEMBLY**
- 11. HAMMER MUSEUM**
- 12. VENICE BEACH AND ABBOT KINNEY**
- 13. GRACIAS MADRE**
- 14. SCHINDLER HOUSE**
- 15. THE BROAD**
- 16. PERSHING SQUARE**
- 17. GRIFFITH OBSERVATORY**

MALIBU FARM

Why should you go there?

Both the café and the restaurant offer delicious food and stunning ocean views.

What's a must-have?

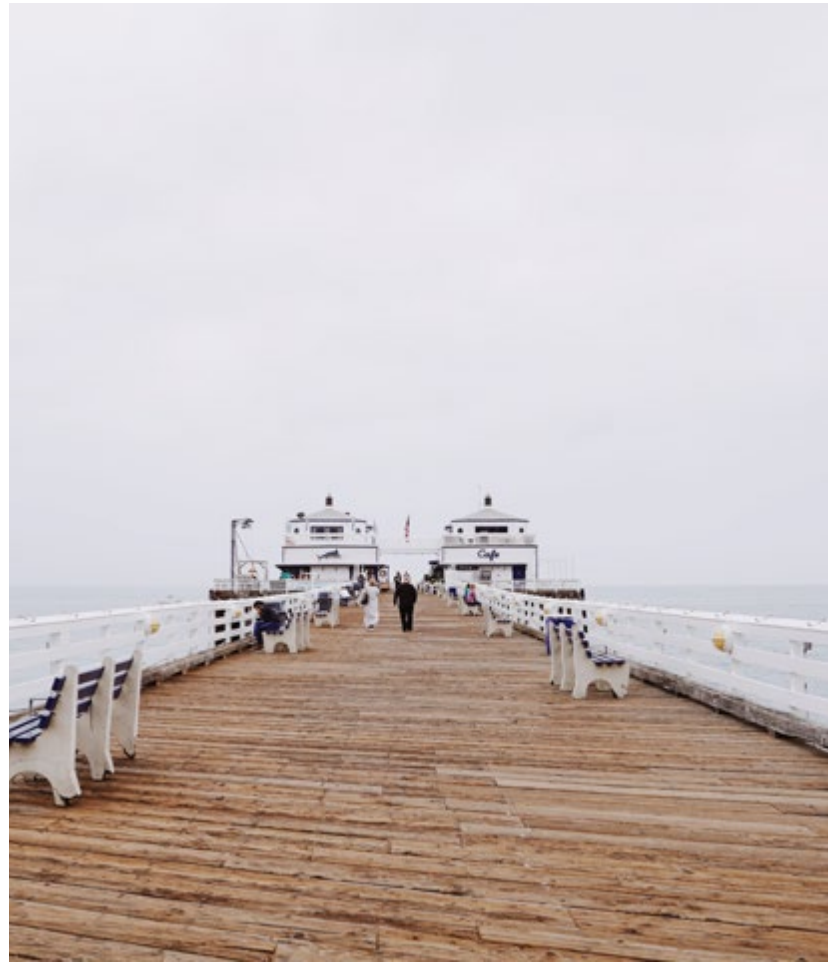
The farm scrambled eggs with smoked salmon and the breakfast burrito are, definitely, a must. And don't miss the café's pancakes.

When's the best time to go?

For lunch with friends, or for a romantic evening at the restaurant with your soulmate. The café is my favourite place for brunch.

23000 PACIFIC COAST HIGHWAY, MALIBU, CA 90265





EL MATADOR BEACH

Why should you go there?

Hidden in Malibu, El Matador Beach is a secluded part of the Southern California coast that's tucked away from the hustle of the Pacific Coast Highway. With its unique rock formations and short shore, it's definitely somewhere to check out if you want to get away from everything and just relax.

What's a must-have?

Pack a beach towel, some sandals and a picnic for an unforgettable moment.

When's the best time to go?

Just before sunset to enjoy the golden hour.

32350 PACIFIC COAST HIGHWAY, MALIBU, CA 90265



THE BEVERLY HILLS HOTEL

Why should you go there?

The world famous 'Pink Palace' needs no introduction, with a long list of famous guests like Marilyn Monroe, John Lennon, Elizabeth Taylor, and John Fitzgerald Kennedy. This historic landmark is quintessential Hollywood. Just walking through the same doors as these legendary individuals is worth a trip in itself.

What's a must-have?

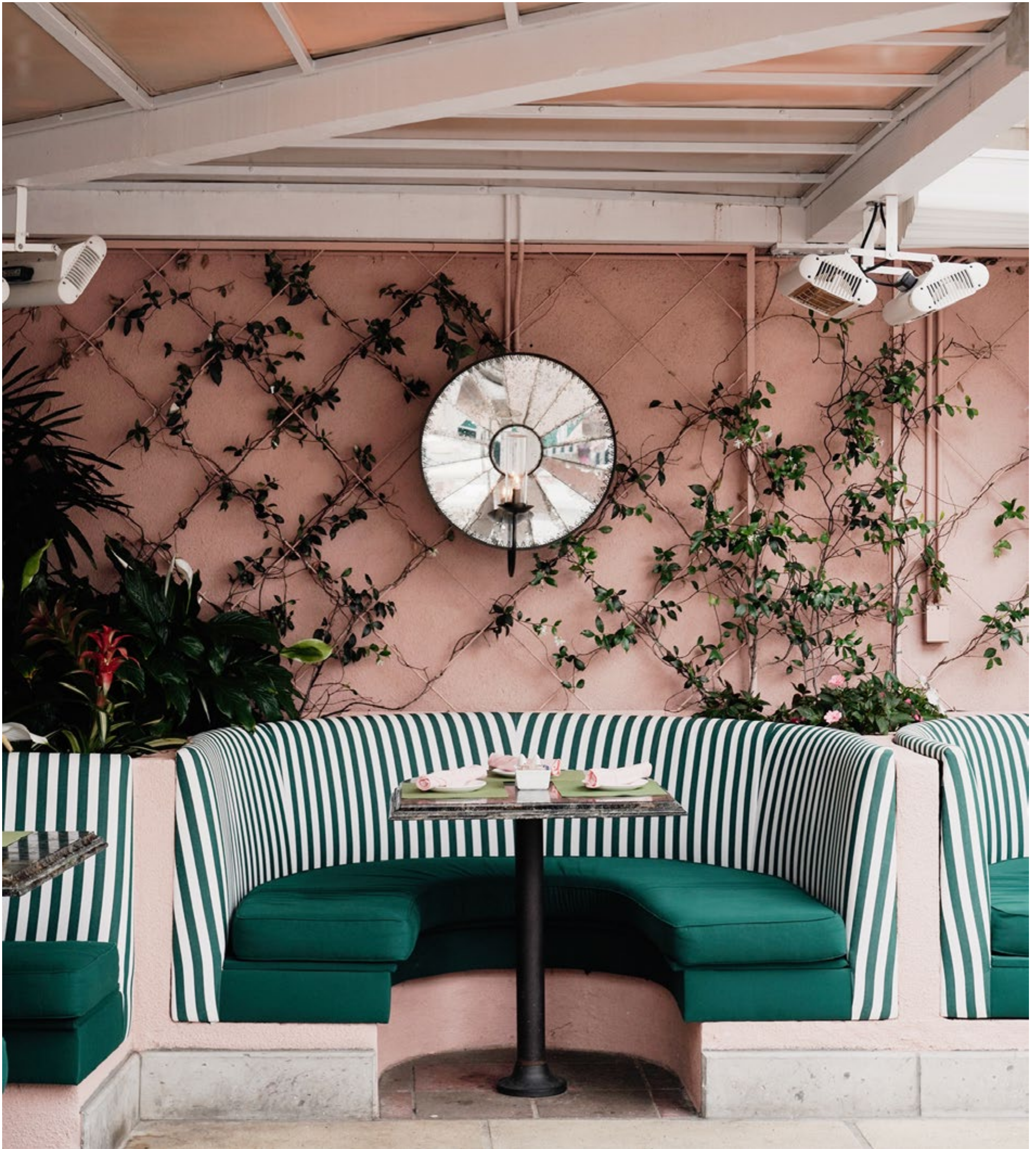
From Joan Crawford being taught to swim by the hotel's pool manager, to The Beatles enjoying a midnight swim with no one else around, the pool is one of the hotel's most special features. So be like Marilyn and lie back, sip a cocktail and soak up the California sun on your striped lounge chair.

When's the best time to go?

Visit the Polo Lounge for Sunday brunch and enjoy an al fresco meal on the patio while listening to the live jazz band. Or catch a beautiful sunset on the terrace of Bar Nineteen12.

9641 SUNSET BOULEVARD, BEVERLY HILLS, CA 90210





SANTA MONICA BEACH

Why should you go there?

A California getaway isn't complete without a trip to Santa Monica's iconic beach. It offers a variety of activities and attractions for beachgoers, so you can sit back with your toes in the sand and sunbathe or enjoy the volleyball courts, surf and paddle schools and a 35km long paved bike trail.

What's a must-have?

Set at the westernmost point of the city, the iconic Santa Monica Pier offers stunning ocean views. With a carousel, an arcade, an amusement park, a trapeze school, and restaurants, it's easy to spend the afternoon here.

When's the best time to go?

Catch the sunset on the Ferris wheel with a panoramic view of the Southern California coastline. Visit on Thursday evenings for the great summer music series on the pier and beach.

PACIFIC COAST HIGHWAY, SANTA MONICA, CA 90401







CAFE FLORA

Why should you go there?

Located inside the beautiful Mansur Gavriel store, this stunning café is designed in light warm tones, complementing the overall surroundings.

What's a must-have?

Grab a coffee and a black sesame cookie.

When's the best time to go?

When they open in the morning if you want some quiet time to yourself.

8475 MELROSE PLACE, LOS ANGELES, CA 90069



ALFRED TEA ROOM

Why should you go there?

Located in the heart of Melrose Place, everything is aesthetically pleasing at Alfred's Tea Room, the sister store of Alfred Coffee. With its pink colours and many plants, it's one of LA's most instagrammed places.

What's a must-have?

Earl Grey tea with boba and matcha milk tea.

When's the best time to go?

It's a charming place to stop by, have a cup of tea, and of course snap a few photos before continuing shopping.

705 NORTH ALFRED STREET, LOS ANGELES, CA 90069



HOTEL BEL-AIR

Why should you go there?

Nestled within 12 lush garden acres in one of the world's most exclusive neighbourhoods, Hotel Bel-Air has been one of Hollywood's most beloved hideaways for over three quarters of a century. With its winding footpaths, covered archways and beloved Swan Lake, its enchanting setting and Spanish Colonial architecture blends LA's indoor and outdoor lifestyle.

What's a must-have?

Make sure to go Wolfgang Puck at Hotel Bel-Air. You're likely to run into the chef himself, as he is there almost every day.

When's the best time to go?

After Thanksgiving when the hotel is decorated for the holiday season, it's truly magical! If you want to go for the day, I'd recommend making a reservation for Sunday brunch. Be sure to wander around the beautiful property afterwards.

701 STONE CANYON ROAD, LOS ANGELES, CA 90077



HOTEL *Bel Air*



RODEO DRIVE

Why should you go there?

Rodeo Drive captures the essence of the LA lifestyle — plenty of shopping, exotic cars, and palm trees.

What's a must-have?

People watching as there's no place quite like Beverly Hills.

When's the best time to go?

Head down late afternoon when it's cooler.

**SANTA MONICA AND WILSHIRE BOULEVARD,
BEVERLY HILLS, CA 90210**







STAHL HOUSE

Why should you go there?

Another historic landmark for anyone interested in architecture. Arguably one of the most famous mid-century modern houses in the world, with breathtaking views of Los Angeles, particularly of Sunset Boulevard.

What's a must-have?

Make sure you go online and make a reservation ahead of time.

When's the best time to go?

In the evening so you can watch the sunset over the city. It's simply breathtaking.

1635 WOODS DRIVE, LOS ANGELES, CA 90069





THE ASSEMBLY

Why should you go there?

If the look of a coffee shop is just as important as the quality of the coffee itself then look no further than The Assembly. With its warm wooden tones and modern layout, it's a stylish spot for a delicious drink.

What's a must-have?

If you need a quiet place to get some work done, bring a laptop or tablet and get productive. The calming environment will help you focus.

When's the best time to go?

In the late afternoon when the sun is fairly low. This is when sunlight flows into the café and makes your mandatory latte photo look the best.

**634 NORTH ROBERTSON BOULEVARD, WEST
HOLLYWOOD, CA 90069**





HAMMER MUSEUM

Why should you go there?

The Hammer Museum has a permanent small private collection of various artists such as Van Gogh, Gauguin, Degas and Monet.

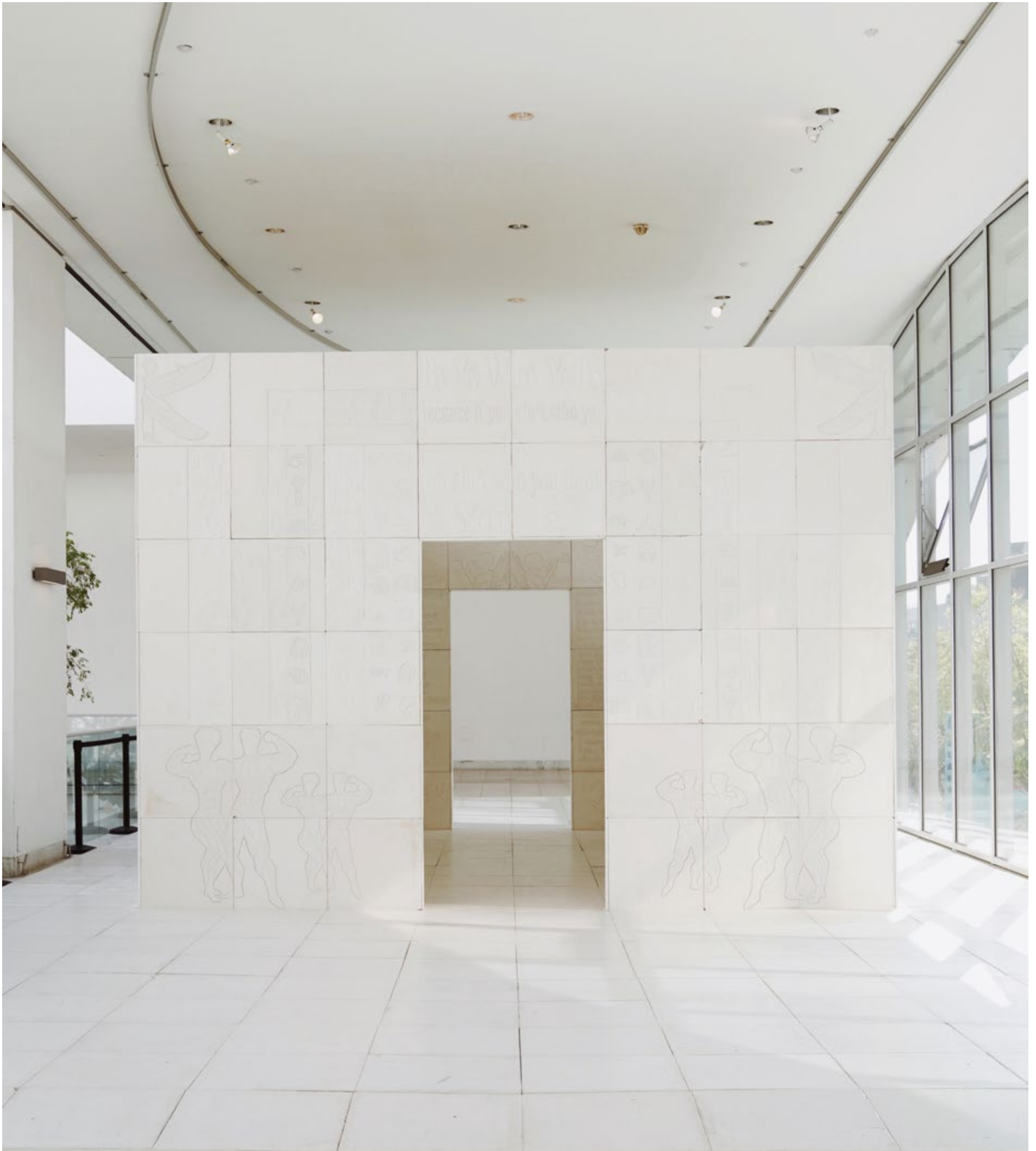
What's a must-have?

One of the most distinguished outdoor sculpture installations in the country, the Franklin D. Murphy Sculpture Garden spans more than five acres of UCLA's campus with over 70 sculptures by artists such as Hans Arp, Deborah Butterfield, Alexander Calder, Barbara Hepworth, Jacques Lipchitz, Henry Moore, Auguste Rodin and David Smith.

When's the best time to go?

Head to the museum around 1-2pm. When you're done, there are many restaurants within walking distance that will be a perfect end to your visit.

**10899 WILSHIRE BOULEVARD, LOS ANGELES,
CA 90024**



VENICE BEACH & ABBOT KINNEY

Why should you go there?

Venice Beach is the definition of street culture in Los Angeles. Filled with graffiti, skate parks, and family-owned businesses, it's a truly eclectic place.

What's a must-have?

You haven't experienced Venice until you walk the boardwalk. But head to Abbot Kinney boulevard to find the best shops, cute cafés and restaurants.

When's the best time to go?

Summer brings everyone from locals to visitors, so put on your sunscreen and head to the boardwalk.

ABBOT KINNEY BOULEVARD, VENICE, CA 90291



M

E

L

T

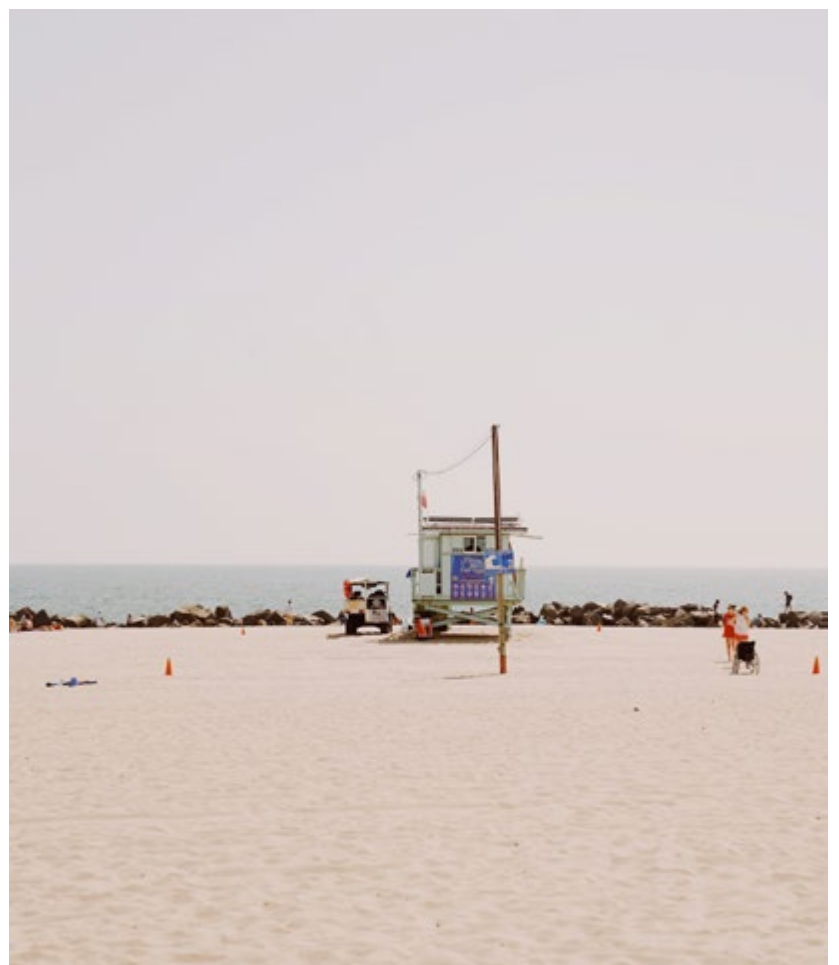
O

N



MELTON
BING





GRACIAS MADRE

Why should you go there?

When in LA, Mexican food is a must. If you feel like something a little less traditional than ‘carne asada’ or ‘al pastor tacos’, Gracias Madre is the right place for you. A hit on the plant-based food scene, this clean, bright restaurant offers a creative vegan take on Mexican food.

What’s a must-have?

The ‘gorditas’ and crab cakes are the most popular dishes on the menu. For dessert, I recommend the fudge brownie topped with ice cream and coconut bacon.

When’s the best time to go?

The bar is the ideal spot to unwind after a long day and is usually quiet during the week.

8905 MELROSE AVENUE, WEST HOLLYWOOD, CA 90069





SCHINDLER HOUSE

Why should you go there?

For a house that was built in 1922, Schindler House is surprisingly modern. Designed and lived in by famous architect Rudolph Schindler, it's considered a pioneer of architectural design for the modern era with its Japanese influences and open floorplan that brings the outdoors inside.

What's a must-have?

Because this is also the headquarters of the MAK Center for Art and Architecture, they have various exhibits that change throughout the year. Make sure to check online to see what's being shown during your visit.

When's the best time to go?

On the weekend for a guided tour of the house (by appointment only).

**833 NORTH KINGS ROAD, WEST HOLLYWOOD,
CA 90069**





THE BROAD

Why should you go there?

If quirky art is your thing then The Broad is a must. With work from artists like Andy Warhol and Jeff Koons, you'll find plenty to admire while walking through this unique building.

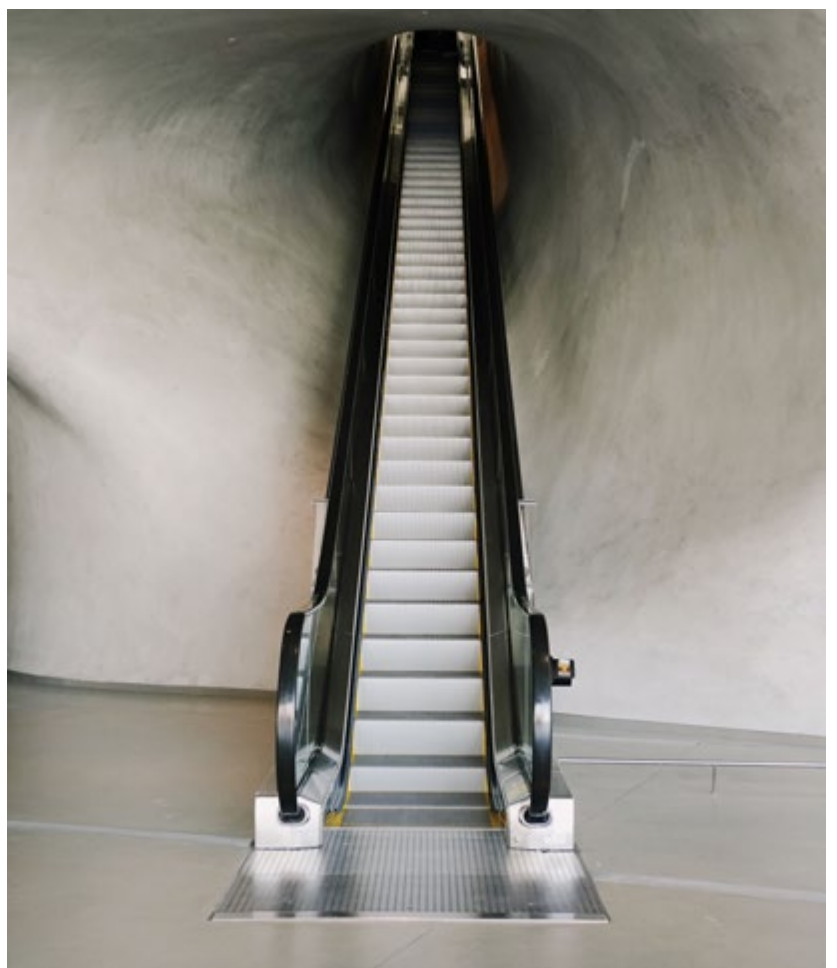
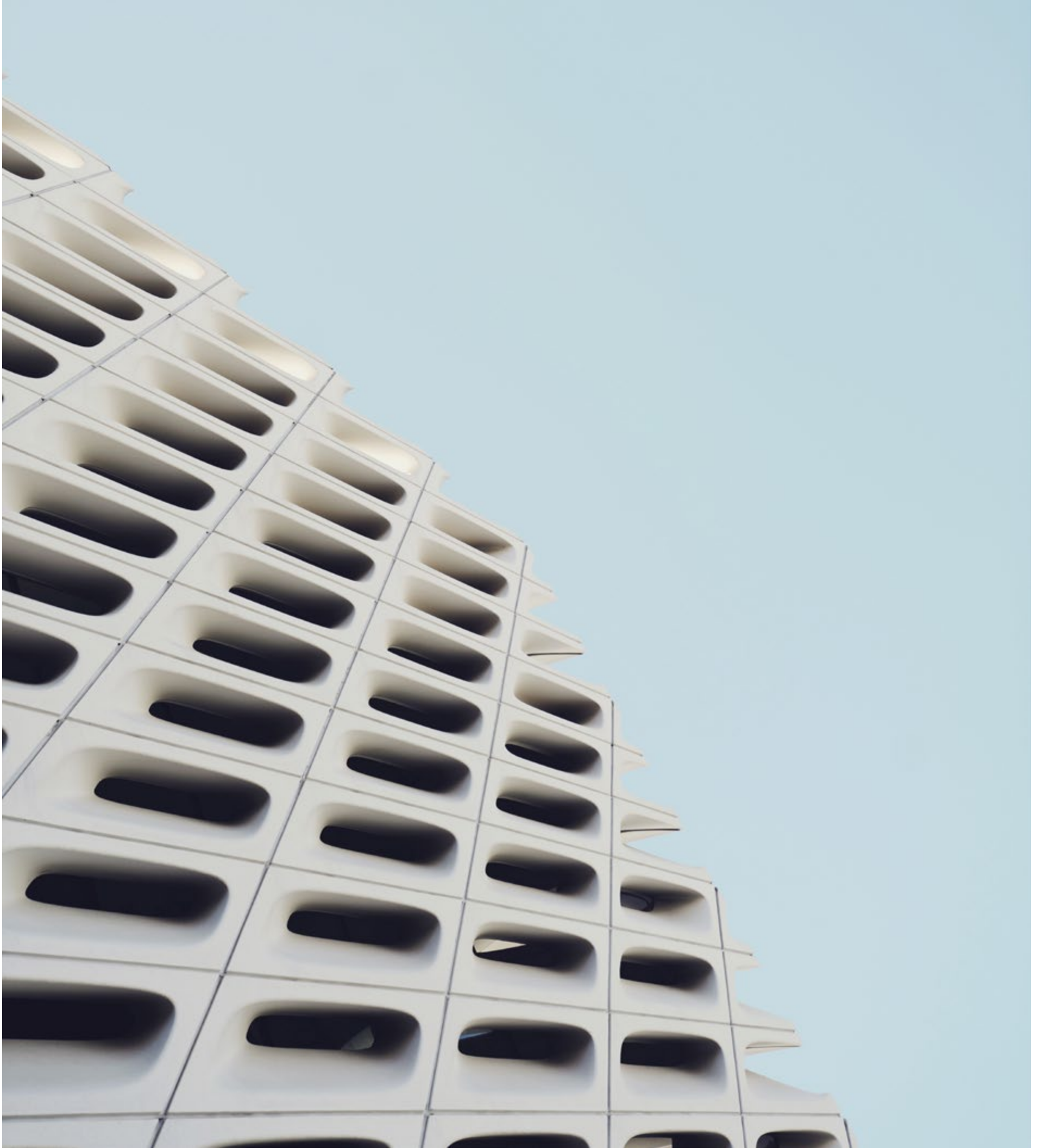
What's a must-have?

Go and check Yayoi Kusama's 'Infinity Mirrors Rooms: Longing For Eternity (2017)', and 'The Souls of Millions of Light Years Away (2013)'. It's a very calming, immersive experience.

When's the best time to go?

Because of its small size, The Broad museum can be seen in about an hour. Go at 11am to finish just in time for lunch, and spend the rest of the afternoon exploring downtown.

**221 SOUTH GRAND AVENUE, LOS ANGELES,
CA 90012**



PERSHING SQUARE

Why should you go there?

Pershing Square is one of LA's most cherished parks. Located right in the middle of downtown, it offers a nice break from the urban landscape and brings some serenity to the hustle and bustle of the city.

What's a must-have?

Whatever you do, don't leave without trying the famous bacon-wrapped hot dog.

When's the best time to go?

Because of the year-round great weather in Southern California, you can check out Pershing Square any time.

532 SOUTH OLIVE STREET, LOS ANGELES, CA 90013





GRIFFITH OBSERVATORY

Why should you go there?

One of LA's most iconic landmarks, it's a great place to see the city from above, and get a peek at the Hollywood Sign. Walk around the entire perimeter to catch different views. And while you're there make sure to step inside and learn a little bit about astronomy.

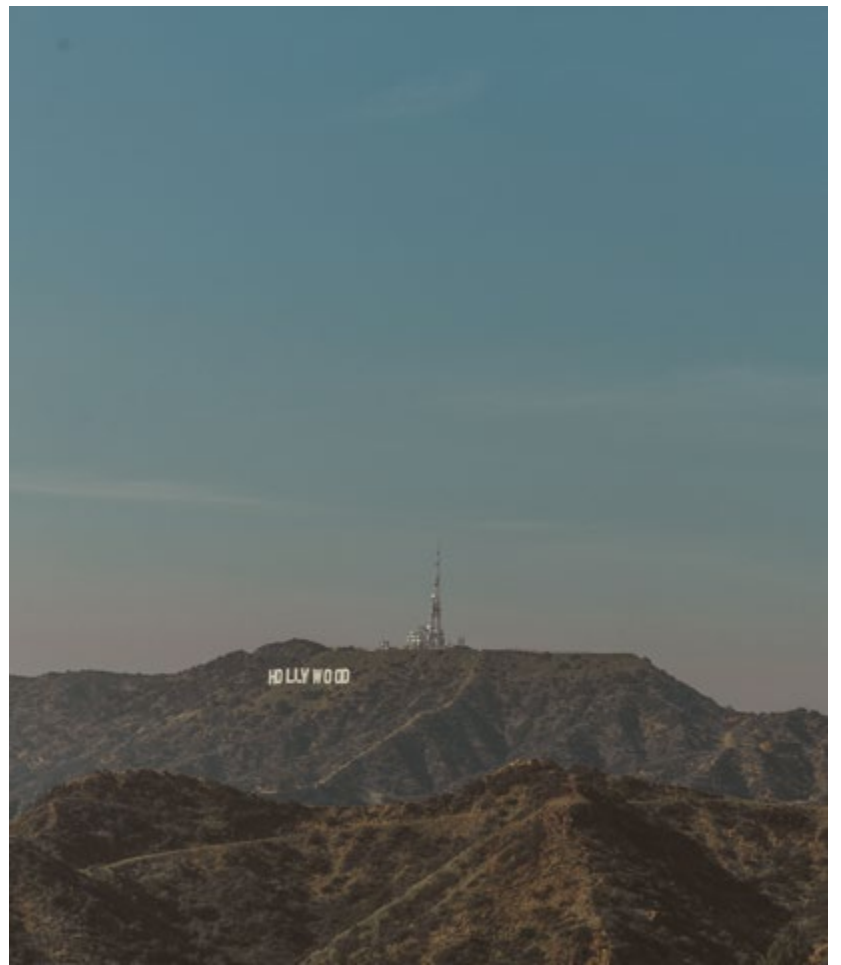
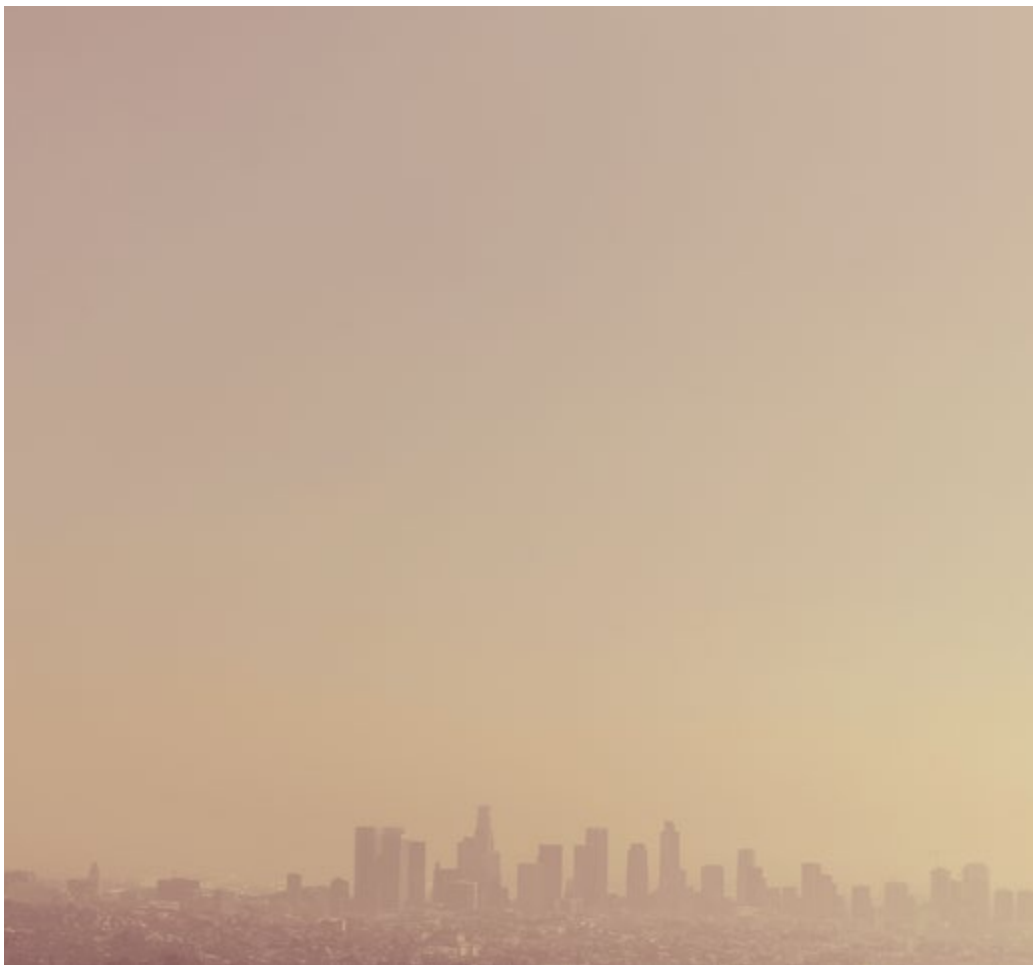
What's a must-have?

Binoculars are a great way to pinpoint your favourite parts of the city. If you're into hiking, Griffith Park is home to one of the most popular hiking trails in Los Angeles.

When's the best time to go?

At sunset. Stay after dark if you love city lights, and watch the entire city sparkle.

**2800 EAST OBSERVATORY ROAD, LOS ANGELES,
CA 90027**





**CLICK TO SEE
THE MAP**
