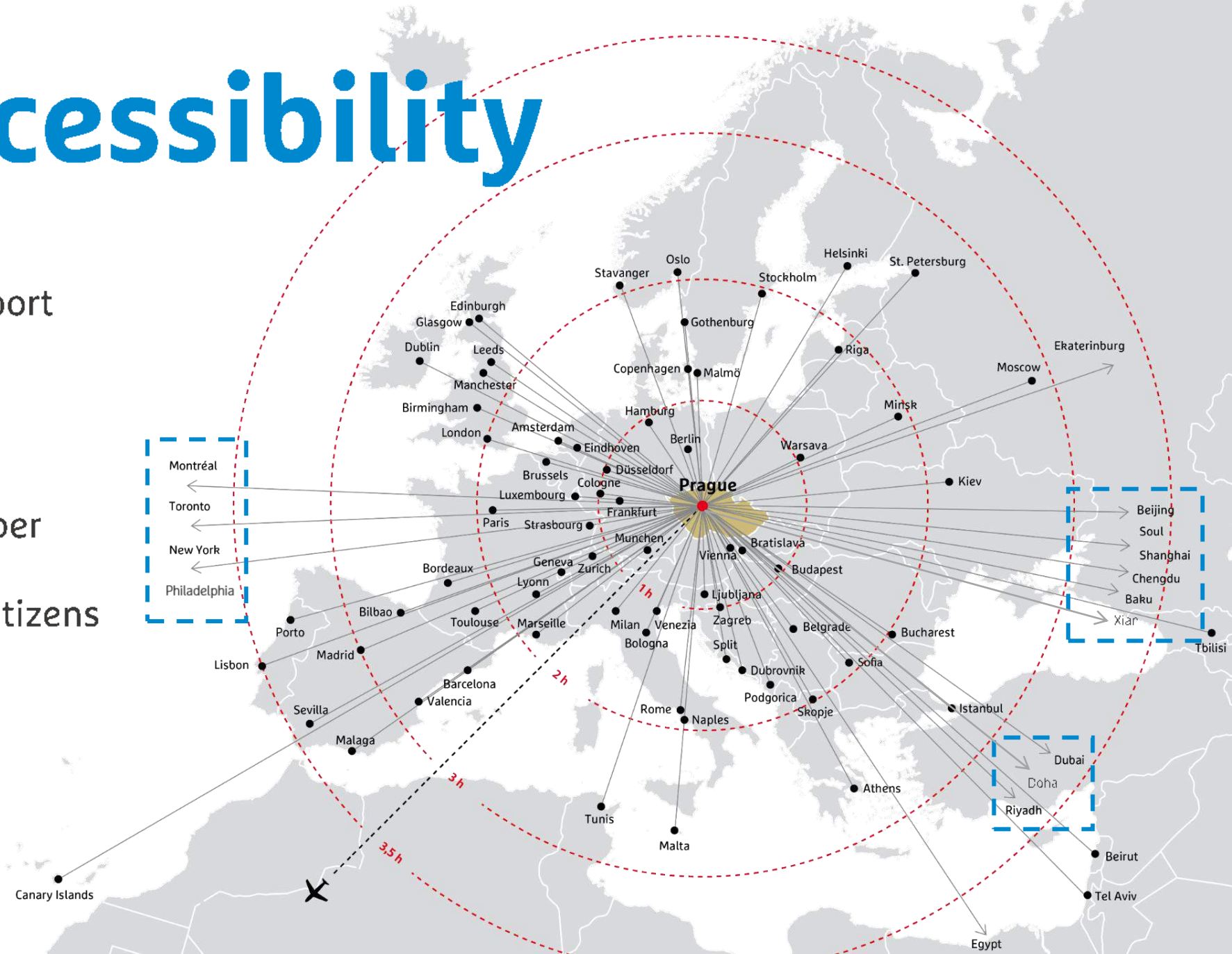




**Wow**  
**Prague InSpires**

# Great Accessibility

- Awarded International Airport
- **Direct flights to 160+ destinations**
- EU & Schengen area member
- No visa requirements for citizens from 89 countries



Click this icon for more info

# Václav Havel Airport Prague

- Modern, efficient and passenger-friendly
- 2 conveniently connected International terminals
- 17.8 million passengers a year\*
- 165 scheduled destinations\*
- 71 scheduled airlines\*
- See [www.prg.aero](http://www.prg.aero)

## Awards

- 2018/2019 Airport Service Quality Award by Airports Council International, winner in category 15-25 mil. passengers
- 2018 "Highly Commended Airport in category 10-25 mil. passengers" in ACI Europe Best Airport Awards
- 2018 "Highly Commended Airport" in World Routes Marketing Awards
- 2017 World Routes Marketing Awards, winner in category 4 – 20 mil. passengers

*\* all data related to 2019 operations*



**World's 9<sup>th</sup> Best Meeting Destination**  
(ICCA Statistics 2019)

**The World's Greenest City**  
(TravelBird Green Cities Index 2018)

**World's 8<sup>th</sup> Safest Country**  
(Global Peace Index 2020)

**World's 11<sup>th</sup> Best Travel Destination**  
(TripAdvisor Traveler's Choice Awards 2019)

# City Overview

World's 5<sup>th</sup> Best Transportation System  
(Arcadis Sustainable Cities Mobility Index)



Main tourist attractions within **walking distance**



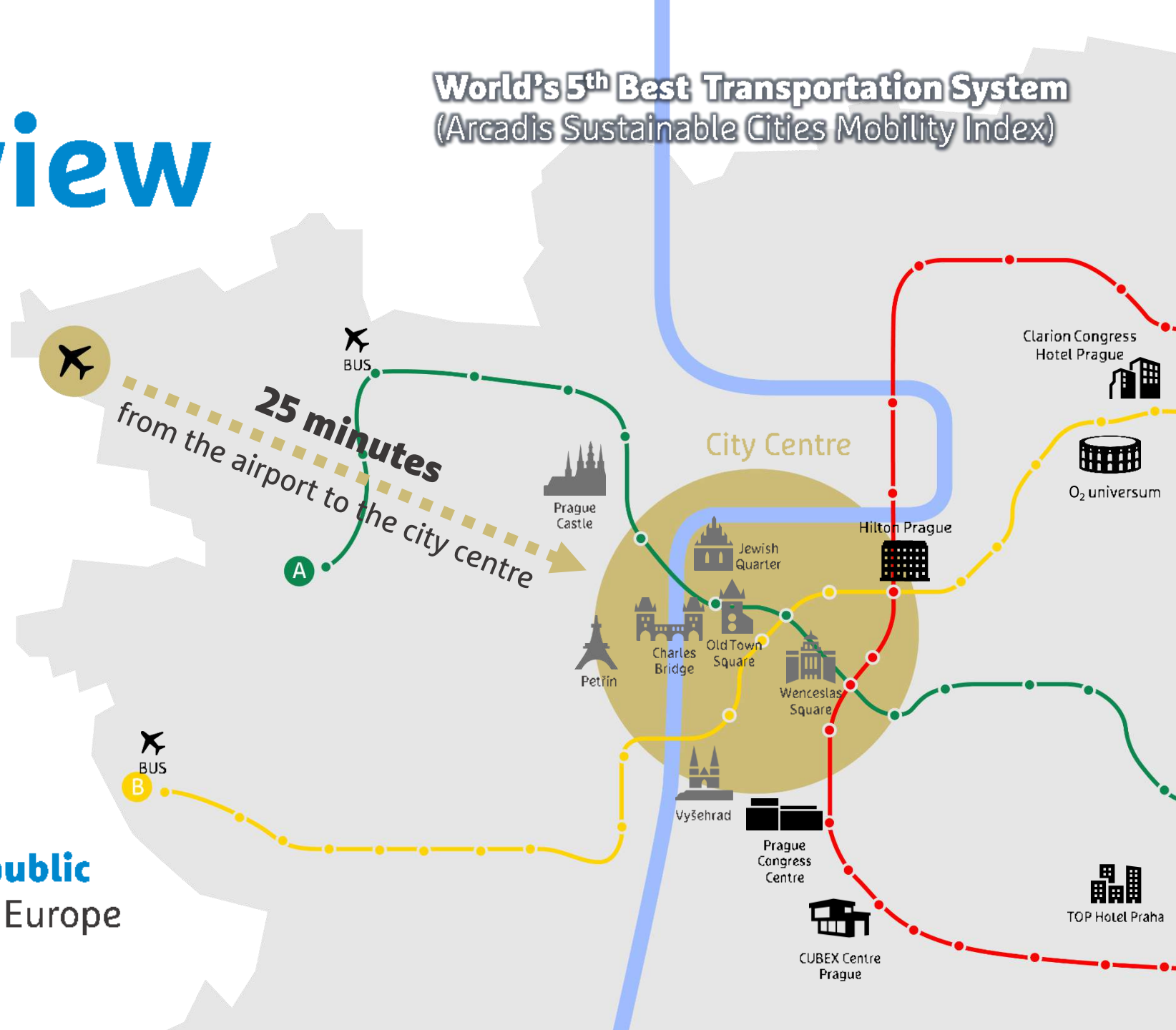
More than **42 000 rooms** at reasonable prices



Great **value for money**



One of the most **efficient public transportation** systems in Europe







# Hybrid Ready



Founding member of the  
**Hybrid City Alliance**



**High-end technologies**



**Virtual Studios**  
in conference venues



Suppliers with extensive  
**experience in virtual  
and hybrid events**

PRAGUE

HYBRID CITY ALLIANCE

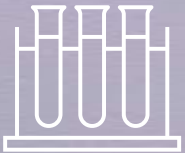
# Safety First



**Dedicated website**  
with up-to-date info



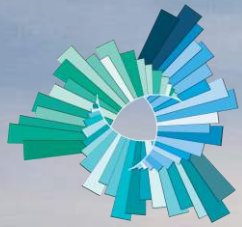
**Health & Safety Guidelines**  
for event organizers in place



**Mobile Rapid Testing**  
Solutions







GLOBAL  
DESTINATION  
SUSTAINABILITY  
MOVEMENT



# #SustainabilityInSpires

**The World's Greenest City**  
(TravelBird Green Cities Index 2018)



Member of the **Global Destination  
Sustainability Movement** since 2019

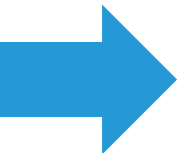


7<sup>th</sup> most developed country in achieving  
the **UN's Sustainable Development Goals**





# Congress & Conference Venues



# O2 universum



Modern, unique &  
multifunctional venue



O<sub>2</sub> universum



Total capacity: **10 000 pax**  
(28 000 pax incl. O2 arena)



Largest hall: **3 800 seats**

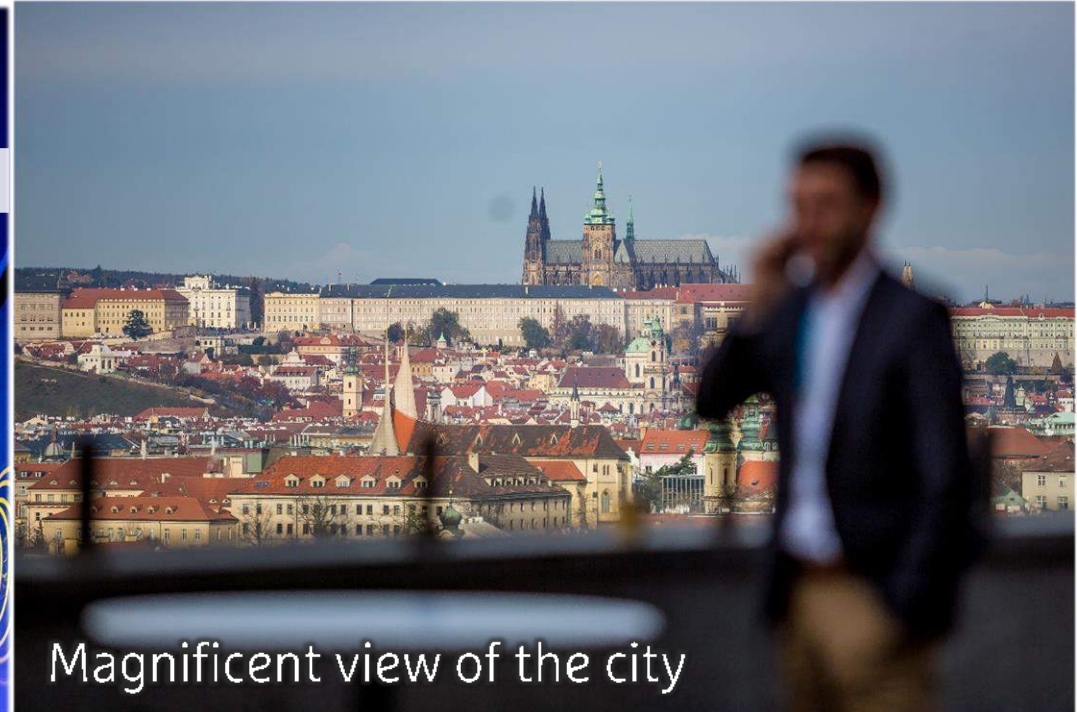


Exhibition space: **13 000 m<sup>2</sup>**



Opened in September 2019

# Prague Congress Centre



Magnificent view of the city



**PRAGUE**  
CONGRESS CENTRE



Total capacity: **9 300 pax**



Largest hall: **2 764 seats**



Exhibition space: **13 000 m2**



Completely refurbished in 2017  
New Exhibition Hall planned

# Cubex Centre Prague



Cubex  
Centrum  
Praha



Total capacity: **1 700 pax**  
incl. City Conference Centre



Largest hall: **1 000 seats**



Exhibition space: **1 200 m2**



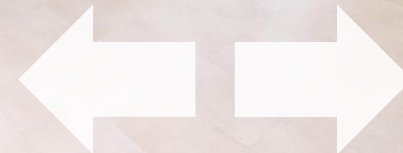
Opened in June 2018



Interiors inspired by Czech  
cubist architecture



Cubex  
Centre  
Prague



# Conference Hotels

(over 1.000 pax)



# TOP Hotel Praha



Largest hall (theatre): **2000 pax**



Number of Meeting Rooms: **21**



Hotel Rooms: **500**





# Clarion Congress Hotel Prague



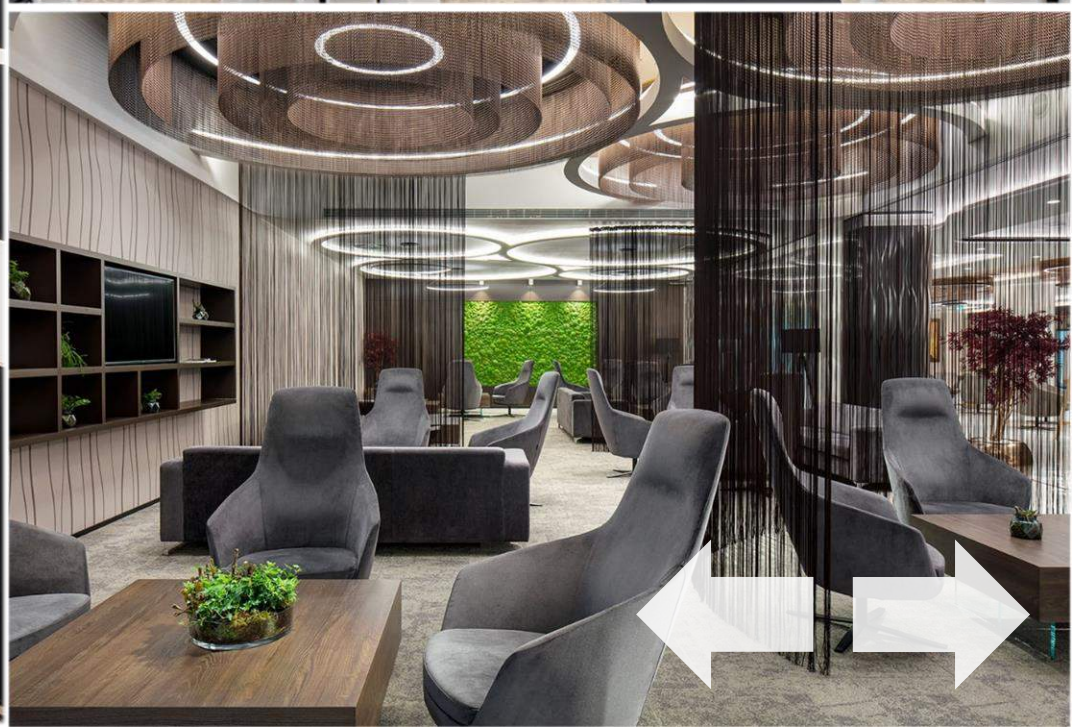
Largest hall (theatre): **1500 pax**



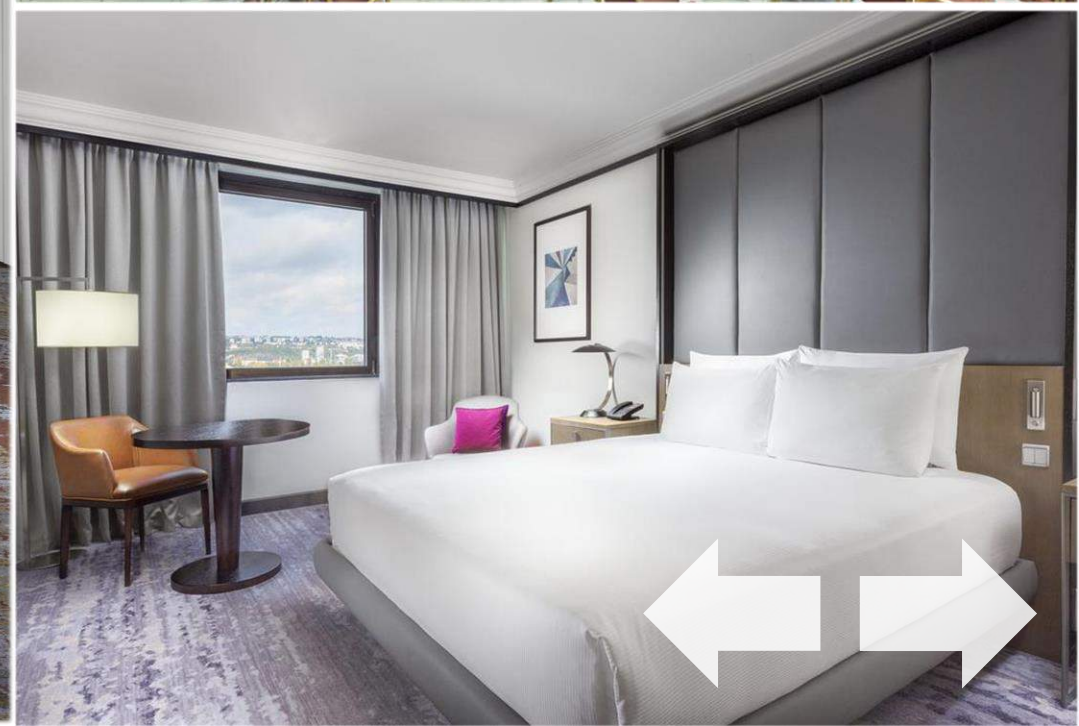
Number of Meeting Rooms: **18**



Hotel Rooms: **559**



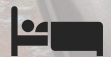
# Hilton Prague



Largest hall (theatre): **1350 pax**



Number of Meeting Rooms: **37**



Hotel Rooms: **791**



# Conference Hotels

(over 500 pax)



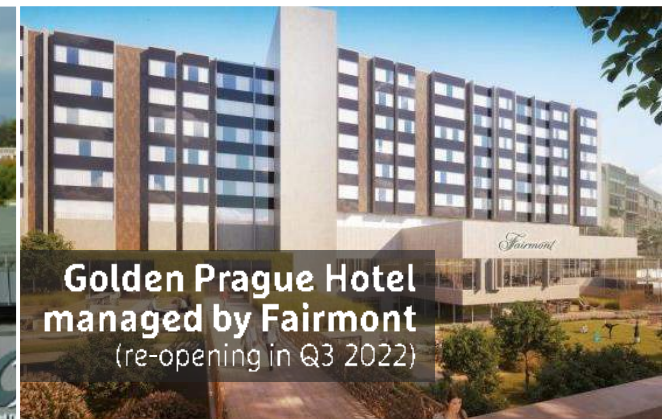
Prague Marriott Hotel



Aquapalace Hotel



Congress & Wellness  
Hotel Olšanka Superior



Golden Prague Hotel  
managed by Fairmont  
(re-opening in Q3 2022)



Grandior Hotel



Vienna House Diplomat



Corinthia Hotel



Orea Hotel Pyramida

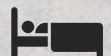
# Prague Marriott Hotel



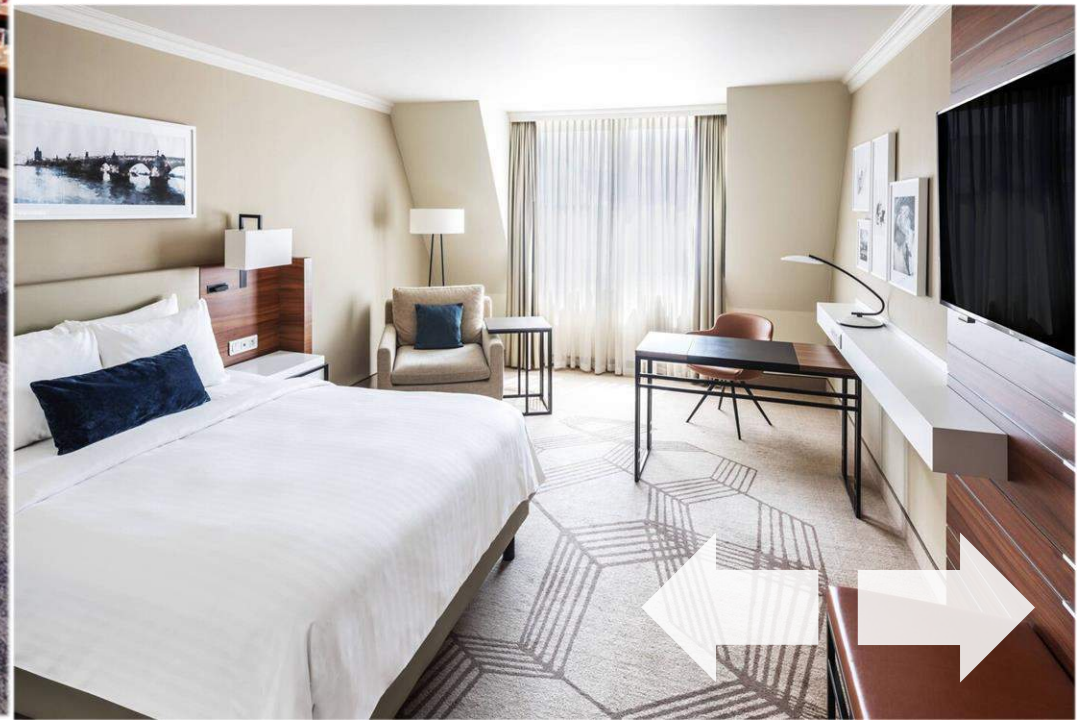
Largest hall (theatre): **650 pax**



Number of Meeting Rooms: **14**





Hotel Rooms: **293**

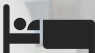


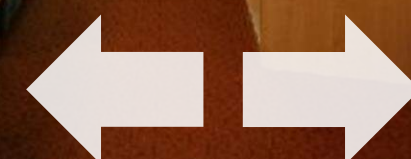
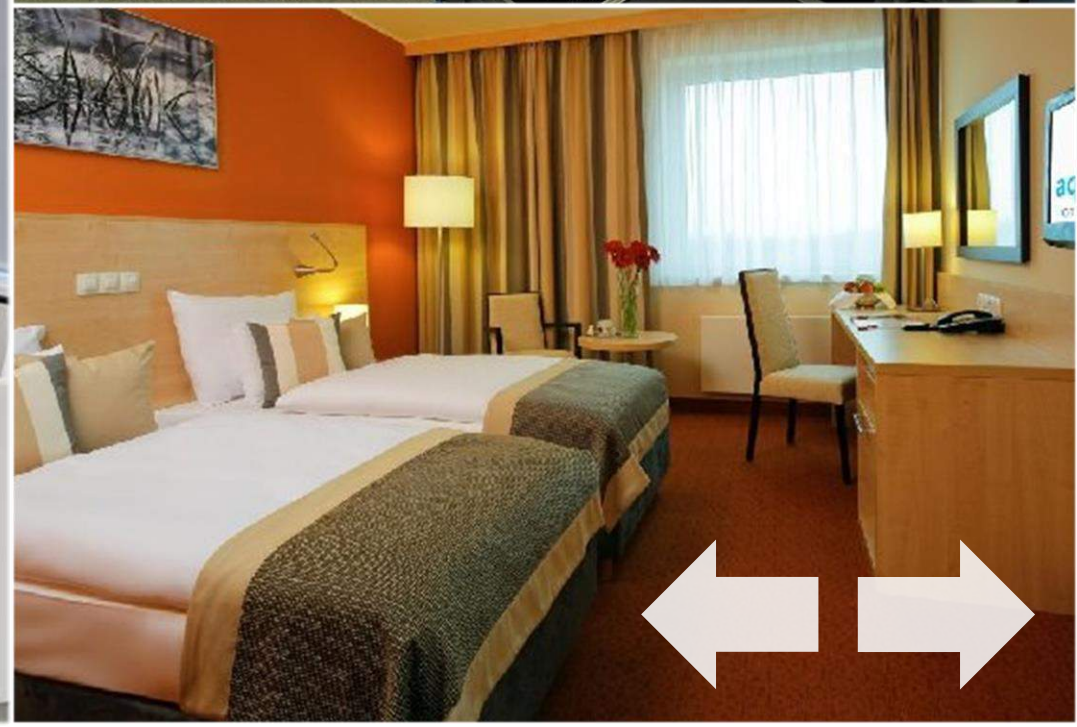
# Aquapalace Hotel Prague



 Largest hall (theatre): **650 pax**

 Number of Meeting Rooms: **10**

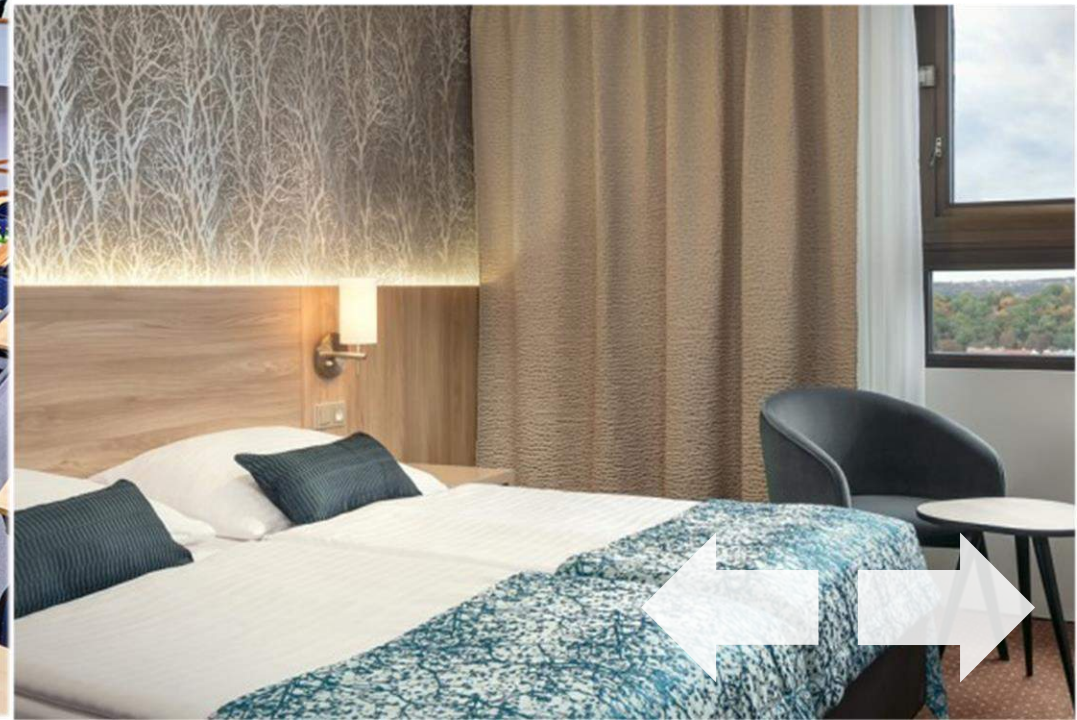
 Hotel Rooms: **231**



# Congress & Wellness Hotel Olšanka SUPERIOR



-  Largest hall (theatre): **600 pax**
-  Number of Meeting Rooms: **15**
-  Hotel Rooms: **252**



# Grandior Hotel Prague



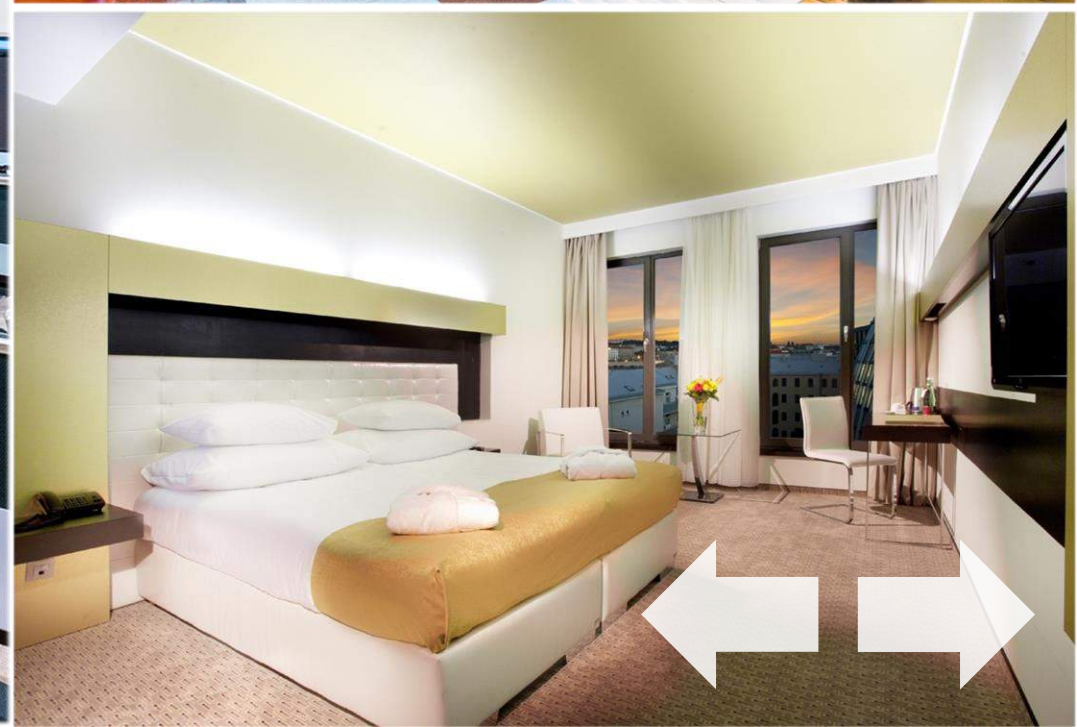
Largest hall (theatre): **515 pax**



Number of Meeting Rooms: **9**



Hotel Rooms: **393**



# Vienna House Diplomat Prague



Largest hall (theatre): **510 pax**



Number of Meeting Rooms: **25**



Hotel Rooms: **398**

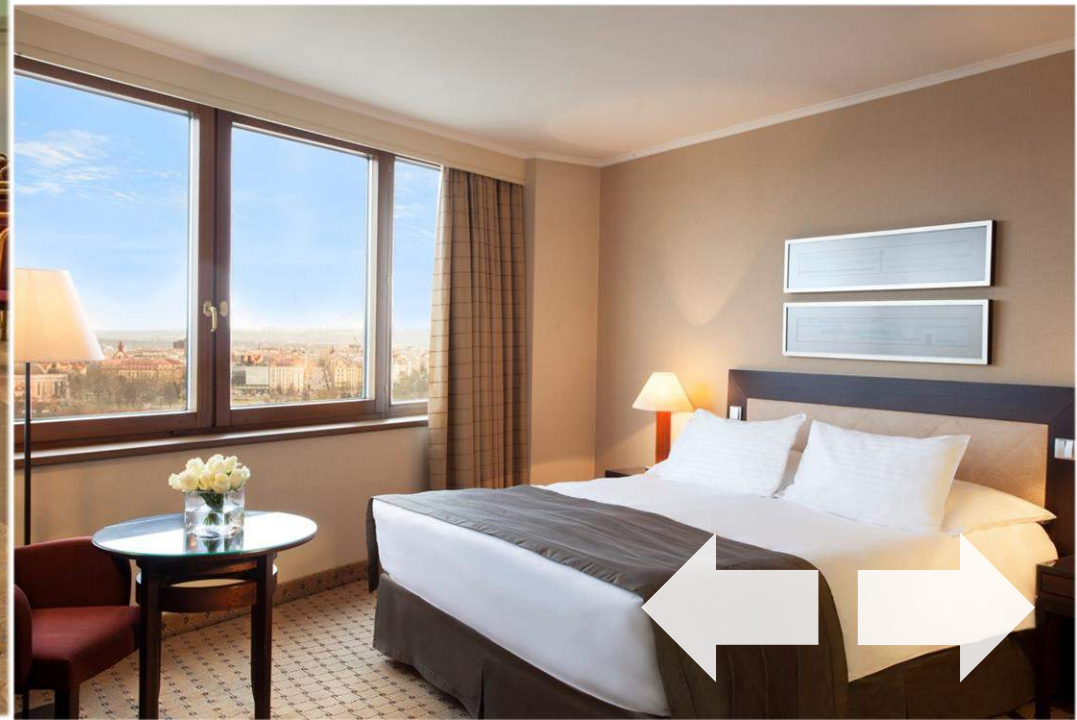
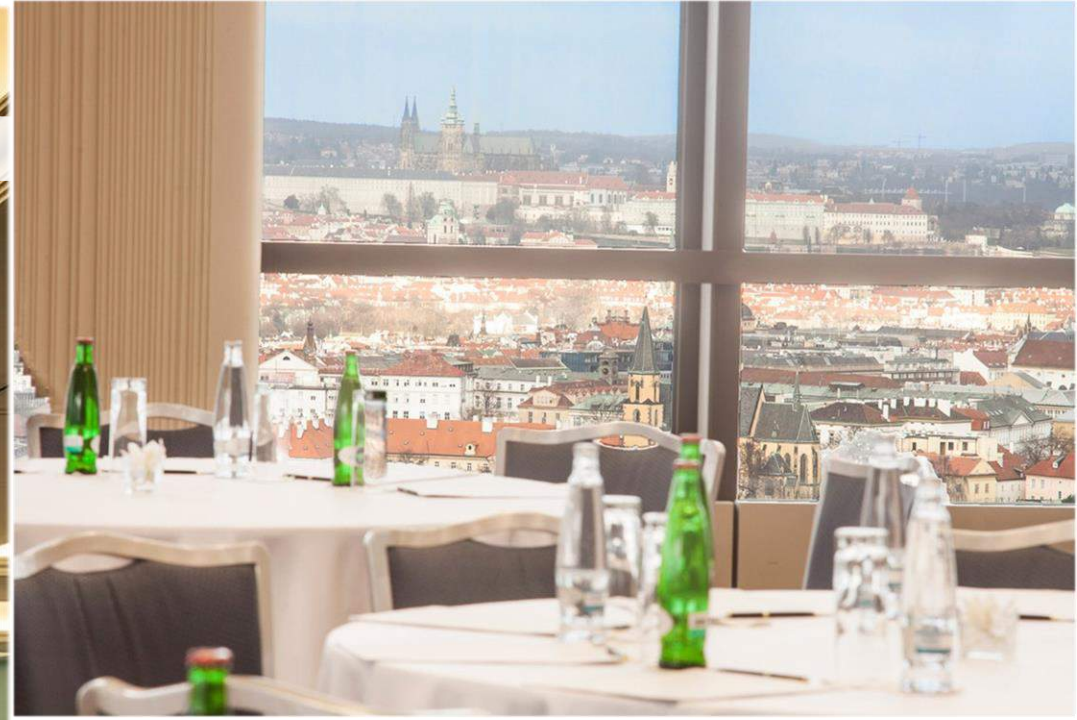




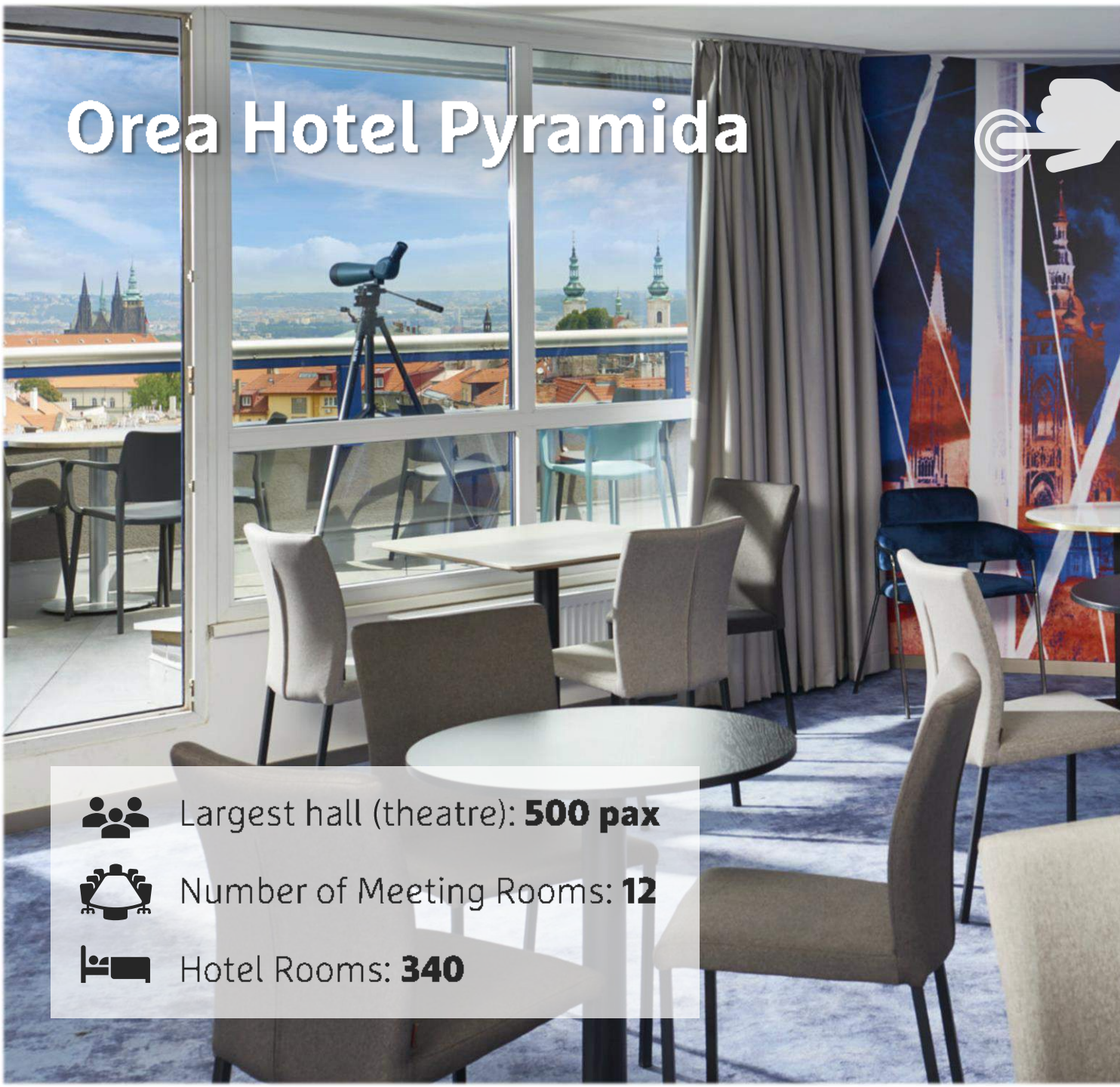
# Corinthia Hotel Prague



 Largest hall (theatre): **500 pax**  
 Number of Meeting Rooms: **22**  
 Hotel Rooms: **539**



# Orea Hotel Pyramida



Largest hall (theatre): **500 pax**



Number of Meeting Rooms: **12**



Hotel Rooms: **340**



# Hotels for Smaller Groups



Click the photos  
for more info



Lindner Hotel  
Prague Castle



Mandarin Oriental  
Prague



Hotel Hilton  
Prague Old Town



NH Collection  
Prague Carlo IV



Alcron Hotel  
Prague



Radisson Blu  
Hotel Prague



Occidental  
Praha



Vienna House  
Andel's Prague



Mama Shelter  
Prague



Courtyard by  
Marriott Prague City



Hotel International  
Prague



Holiday Inn Prague  
Congress Centre

# Social Event Venues



**Žofín Palace**



**National House of  
Vinohrady**



**Hard Rock Café  
Prague**



**Lobkowitz Palace  
Prague Castle**

# Žofín Palace

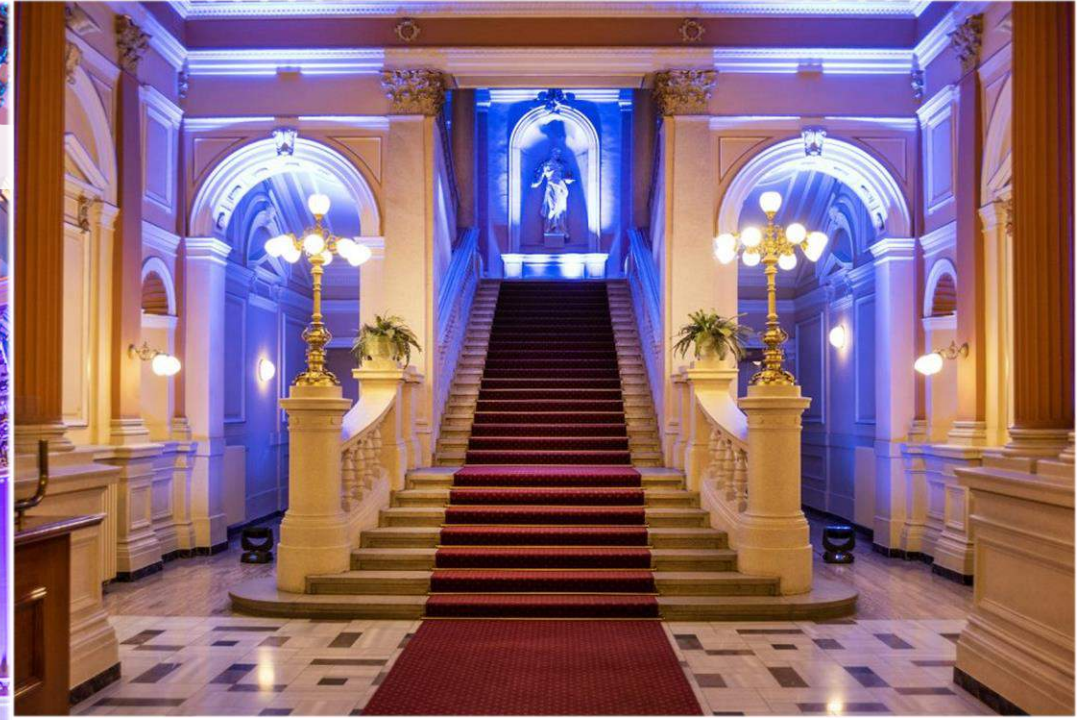


Total Capacity: **1 200 pax**



Number of Rooms/Halls: **4**

# National House of Vinohrady

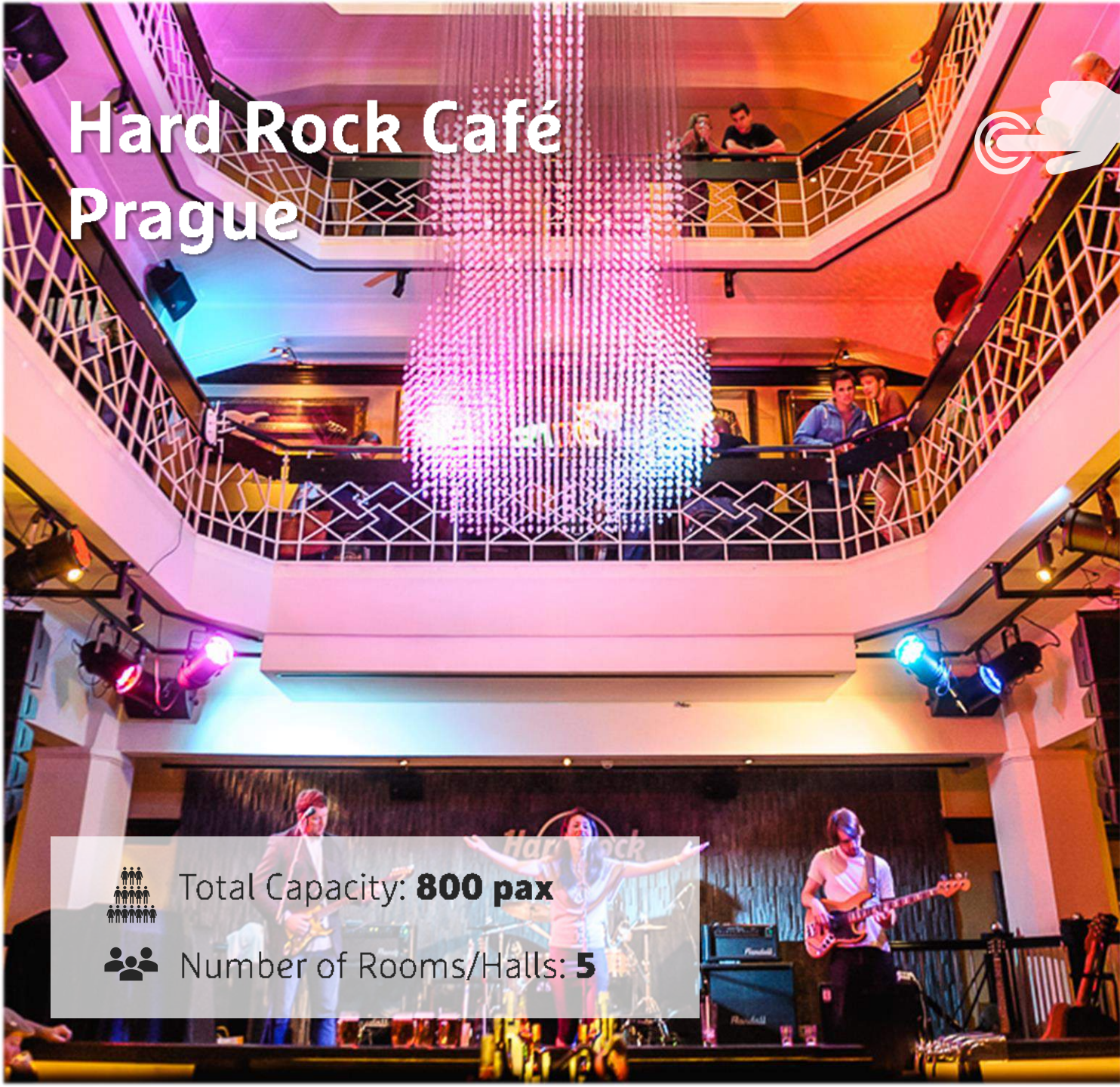


Total Capacity: **1 500 pax**



Number of Rooms/Halls: **8**

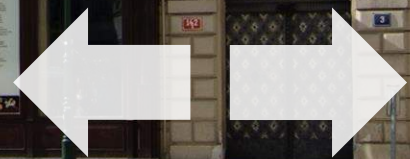
# Hard Rock Café Prague



Total Capacity: **800 pax**



Number of Rooms/Halls: **5**



# Lobkowitz Palace Prague Castle



Total Capacity: **650 pax**



Number of Rooms/Halls: **16**





# Incentive Ideas

- Old-timer Car Rally
- Beer Tour or Beer Spa
- Historical Tram Ride
- Treasure Hunt
- Glass Decoration
- Film Prague
- Dragon Boats
- Folklore Garden
- Karting



## PCO:



## DMC:



## Services:



# Value for money

- Public transport (24 hour ticket) | 4 EUR
- Museum entrance | 4 EUR
- Glass of beer (0,5 l) | 1,5 EUR
- Business lunch (3 courses) | 20 EUR
- Business dinner (3 courses) | 45 EUR
- Espresso in a bar | 1,5 EUR
- Concert ticket | 7,5 EUR



# Local Support

Wow  
Prague  
Convention  
Bureau

- **Financial support** to association events with more than 500 delegates
- Free/discounted **public transportation tickets**
- Maps and brochures
- Special congress airfare (Czech Airlines & Sky Team Alliance)





**We look forward to meeting you in Prague!**