



**Dom Pedro**  
**Lisboa**

★★★★★

BUSINESS & LEISURE HOTEL

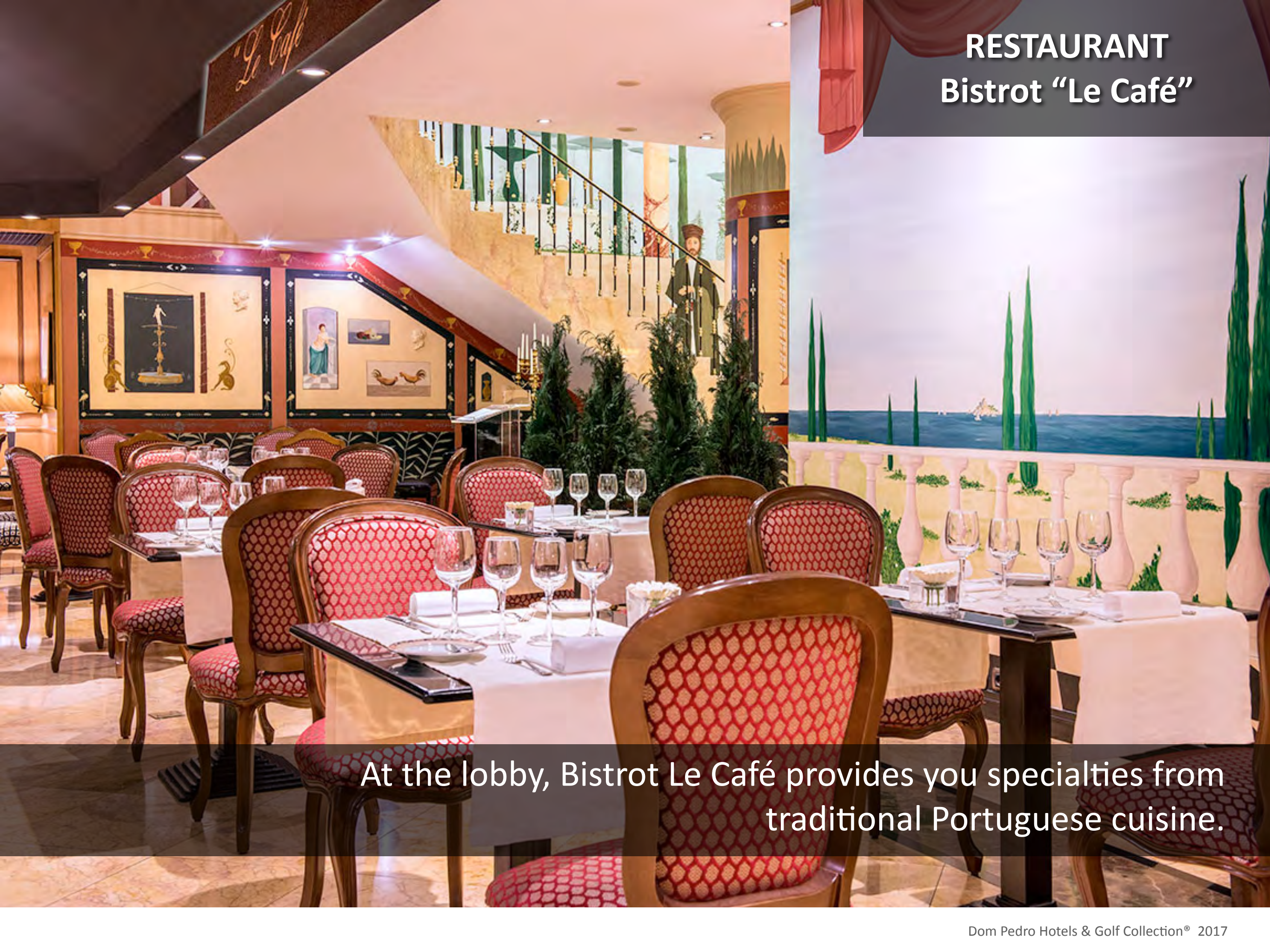


# LOBBY



Welcome to Dom Pedro Lisboa, a 5-star hotel located near the center of the city, only 7 km from Lisbon International Airport.



The image shows the interior of a restaurant named Bistrot Le Café. The room is elegantly furnished with several tables covered in white cloths, each set with white plates, silverware, and wine glasses. The chairs have a distinctive red and white patterned upholstery. In the background, a staircase with a decorative railing leads to an upper level. The walls are adorned with framed artwork and decorative elements. A balcony with a white balustrade offers a view of a coastal landscape with tall cypress trees and a blue sea under a clear sky. The name 'Le Café' is visible on a sign above the staircase.

## RESTAURANT Bistrot “Le Café”

At the lobby, Bistrot Le Café provides you specialties from traditional Portuguese cuisine.



## CLASSIC ROOM



With a classic and elegant décor, with 30 sqm and featuring a king size bed and superb view over Lisbon and the Tejo River.



## TOWER ROOM



These rooms offer a stunning view over Lisbon and access to complimentary services, such as Spa Aquae and VIP Lounge.



# SUITE



Comfort and sophistication with a fabulous view over Lisbon, and access to additional complimentary services, such as the Spa Aquae and VIP Lounge.



# SUITE LIVING ROOM



Unique luminosity. A testament to Lisbon's famous brightness.



## VIP LOUNGE



Exclusive room on the 19th floor that offers a panoramic view over the city and the Tejo River, where guests can enjoy daily newspapers and soft drinks.



# PRESIDENTIAL SUITE

Occupies the top floor of the hotel and has a 360 degree view over the entire city and the Tejo River



# PRESIDENTIAL SUITE



The most exclusive and luxurious Suite in Lisbon



## PRESIDENTIAL SUITE

A photograph of a Presidential Suite living room. The room features a large, dark wood coffee table with a glass top, reflecting the room's interior. On the table are several books and a bowl of fruit. Two ornate, dark wood chairs with cream-colored upholstery and leopard print accents are positioned in the foreground. In the background, a plush brown sofa is adorned with pink and leopard print pillows. To the left, a matching armchair is also decorated with pink and leopard print pillows. A large, dark wood lamp with a white base stands next to the sofa. The room is characterized by tall, dark wood columns and a large, panoramic window that offers a view of the Tejo River, the city of Lisbon, and the 25 de Abril Bridge. The window is framed by brown curtains. The floor is made of dark, polished tiles.

The panoramic windows feature an impressive view over the Tejo River, the capital, and its main bridge - 25 de Abril.



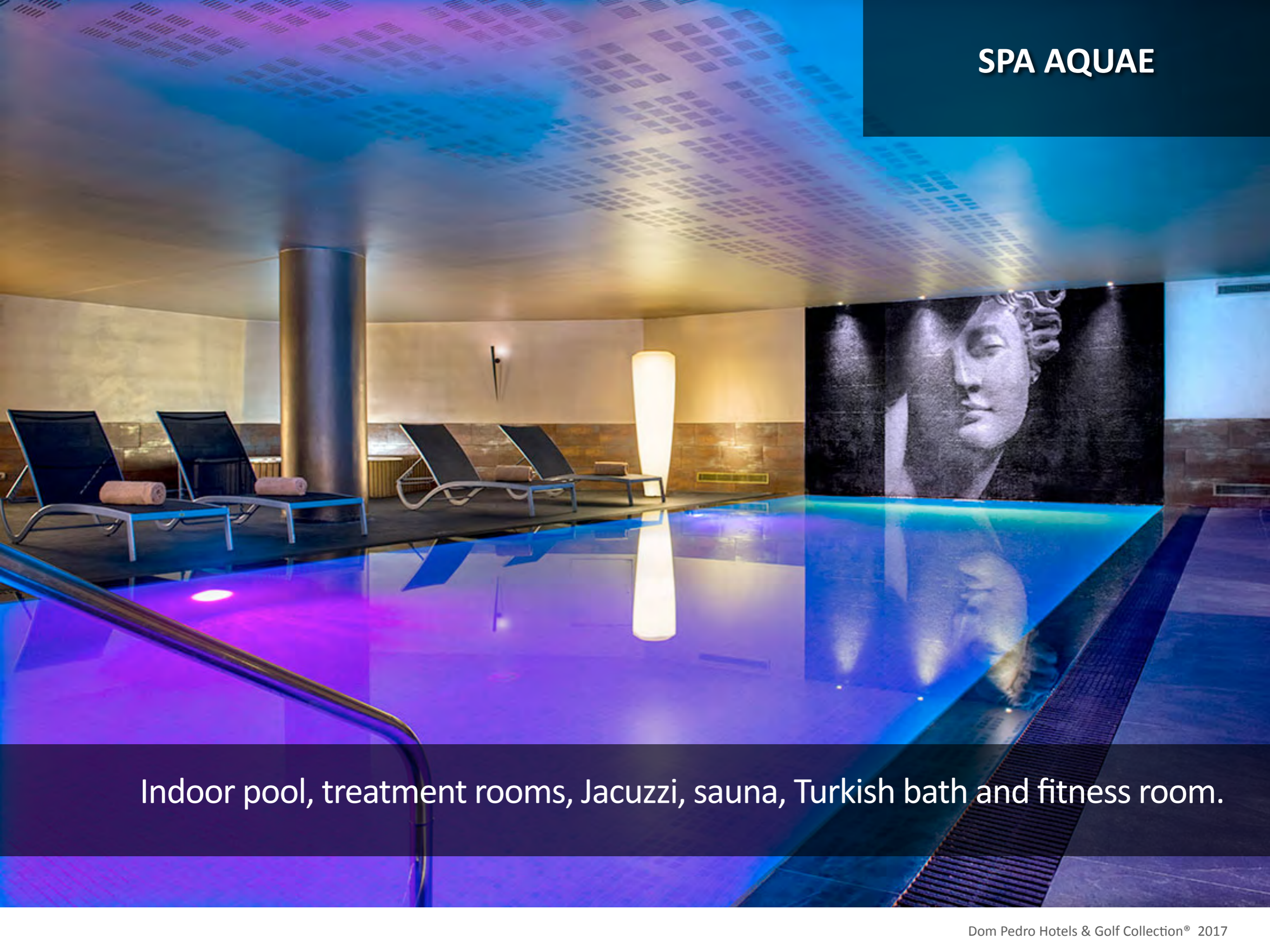
# SUITE PRESIDENCIAL



Winter garden



# SPA AQUAE



Indoor pool, treatment rooms, Jacuzzi, sauna, Turkish bath and fitness room.





## SPA AQUAE

Our friendly and experienced team can help you to choose the best treatments and massages to find your needs.



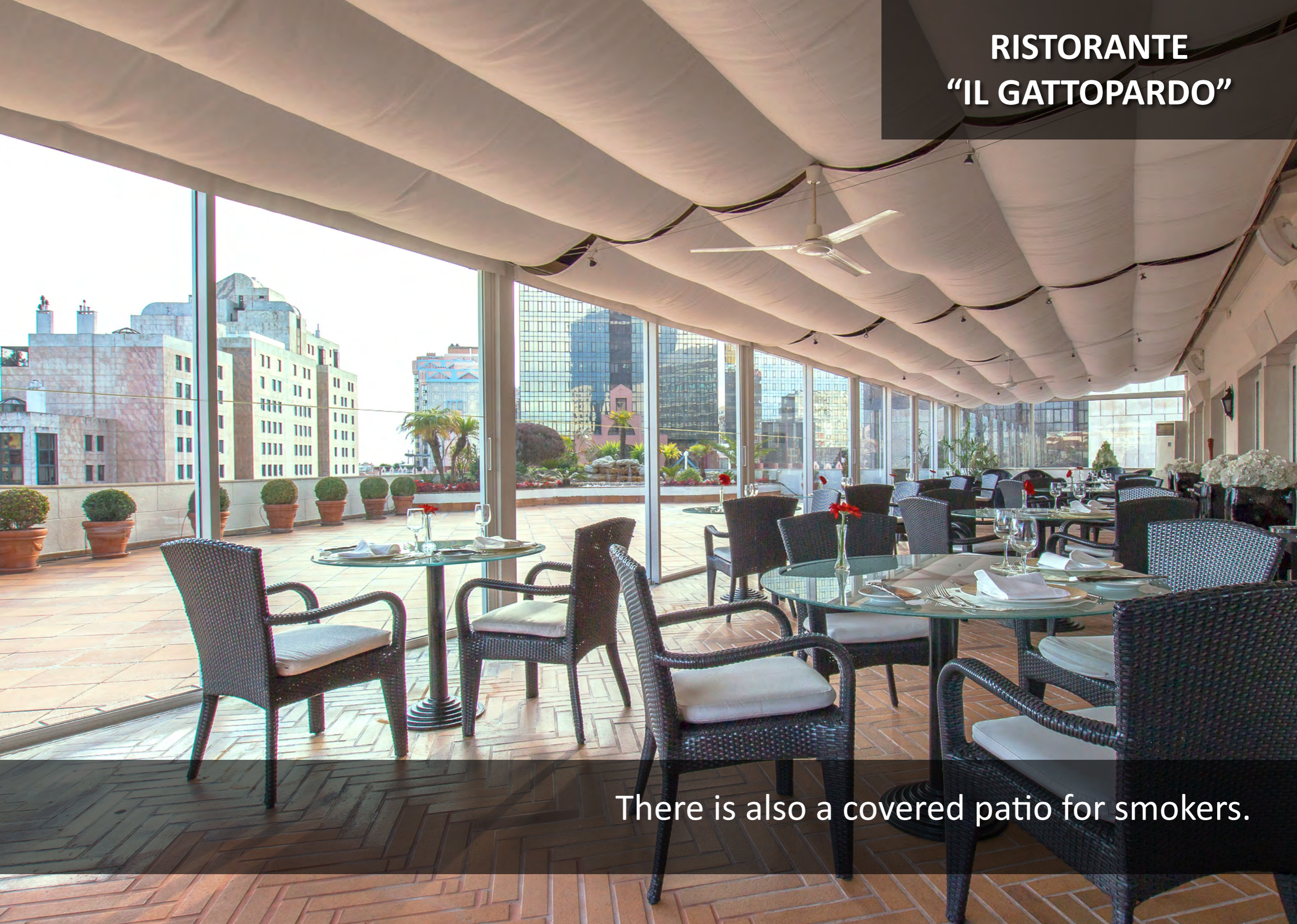
# BAR "IL GATTOPARDO"



With an inviting and luxurious atmosphere.



# RISTORANTE “IL GATTOPARDO”



There is also a covered patio for smokers.



**RISTORANTE  
“IL GATTOPARDO”**



One of the top Italian restaurant in Lisbon.



# FACT SHEET

## LOCATION

The Dom Pedro Lisboa is a 5-star hotel located in the centre of Lisbon, with a stunning view over the city, the Tagus River and S. Jorge Castle. Located directly in front of the Amoreiras Shopping Center which has 250 shops of renowned brands, cinemas and restaurants and close to the El Corte Inglés Shopping Center. Only 7 km from Lisbon's airport.

---

**ACCOMMODATION:** 263 rooms

### 86 Classic Rooms

Measuring 30 sqm and featuring a king size bed

### 81 Classic River View

30 sqm, with a superb view over Lisbon and the Tagus River

### 38 Tower Rooms

30 sqm, these rooms are located between the 15th and 19th floor

### 37 Tower River View

30 sqm, with a superb view over Lisbon and the Tagus River

### 9 Family Rooms

33 sqm, ideal for families, these rooms can be opened onto adjoining rooms

### 12 Triple Rooms

With an area of 30 sqm, these are perfect rooms for a family visiting Lisbon

### 4 Suites

57 sqm, comprised of two separate spaces, living room and bedroom

### 4 Suites River View

57 sqm, with a superb view over Lisbon, the Tagus River and São Jorge Castle

### 1 Presidential Suite

Measuring 420 sqm. It occupies the top floor of the hotel and has a 360 degrees stunning view over the entire city and the Tagus River.

### Room facilities:

Wi-Fi, king size or twin beds, interactive TV HD, Pay TV, bathroom amenities D'AVEIA, hairdryer, umbrella, digital safe, office desk, telephone, minibar, Air conditioning, Electric power at 220V, kimono and iron/ ironing board. Tower with extra facilities: Tea & Coffee making facilities, Dom Pedro amenities, bathrobe and slippers.

## RESTAURANTS & BARS

**Bistrot "Le café"** - Buffet and continental breakfast. From Monday to Friday, each day features flavours from a different region in Portugal.

Breakfast: 6:30am to 10:00am, Lunch: 12:30pm to 3:00pm, Dinner: 7:30pm to 10:30pm

### Bar "Le café"

Sandwiches & Snacks | From 10:00am to 01:00am

### Ristorante "Il Gattopardo"

The top Italian restaurant in Lisbon. There is a covered patio for smokers.

Lunch: from 12:30 PM to 3:00pm | Dinner: from 8:00pm to 11:00pm

---

## SPA AQUAE

Indoor heated pool with chromotherapy, treatment and massage rooms, fitness centre, sauna Turkish bath and Jacuzzi. From 10:30am to 9:00pm. SPA is forbidden to children under 16 years.

---

## MEETINGS & EVENTS

The Dom Pedro Lisboa is a business hotel with approximately 1400 sqm of conference rooms, most of them with natural light. The Verdi Ballroom has a capacity for 400 people in a theatre format. For small events or meetings, the hotel has smaller meeting rooms that will suit your needs.

---

## SERVICES

24 hour reception, private check in for small groups, luggage service

Parking garage, valet parking, car washing service

24 hour room service, regular and express laundry service

24-hours a day for booking shuttles to and from the airport or organizing sightseeing tours

Wi-Fi available all over the hotel.

Hotel lobby room with PC and free internet access.

**Business Center** on the 2nd floor with free internet access. Telephone, fax, scanner, printer, photocopier, translation service (on request), from 9:00am to 06:00pm, monday to friday.

Check-in: a partir das 14h | Check-out: até às 12h

# CONTACTS

**Dom Pedro Lisboa** - Av. Eng. Duarte Pacheco, 24 1070-110 Lisboa - Portugal  
Tel: + (351) 213 896 600 | lisboa.booking@dompoko.com | www.dompoko.com



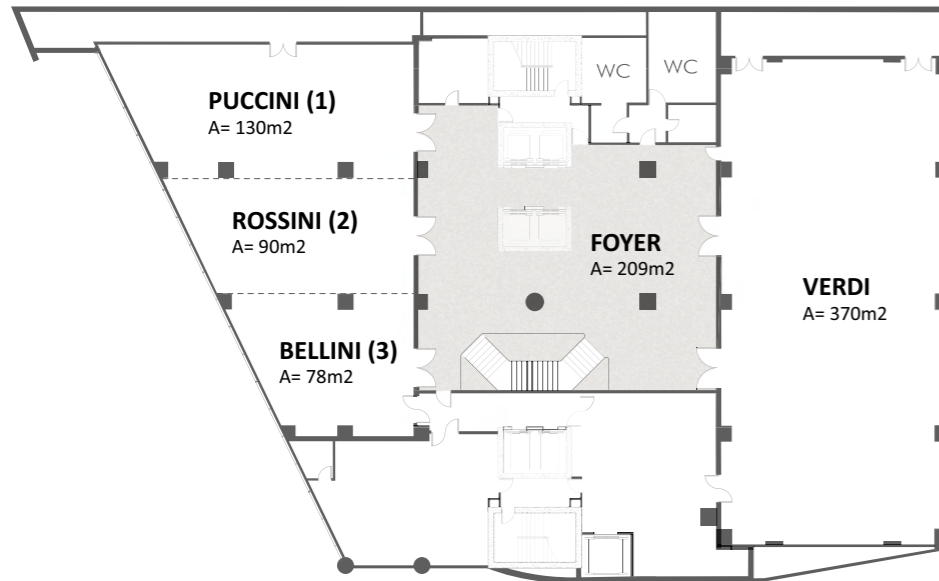
# MEETINGS & EVENTS

16 multi-purpose rooms, most with natural light.



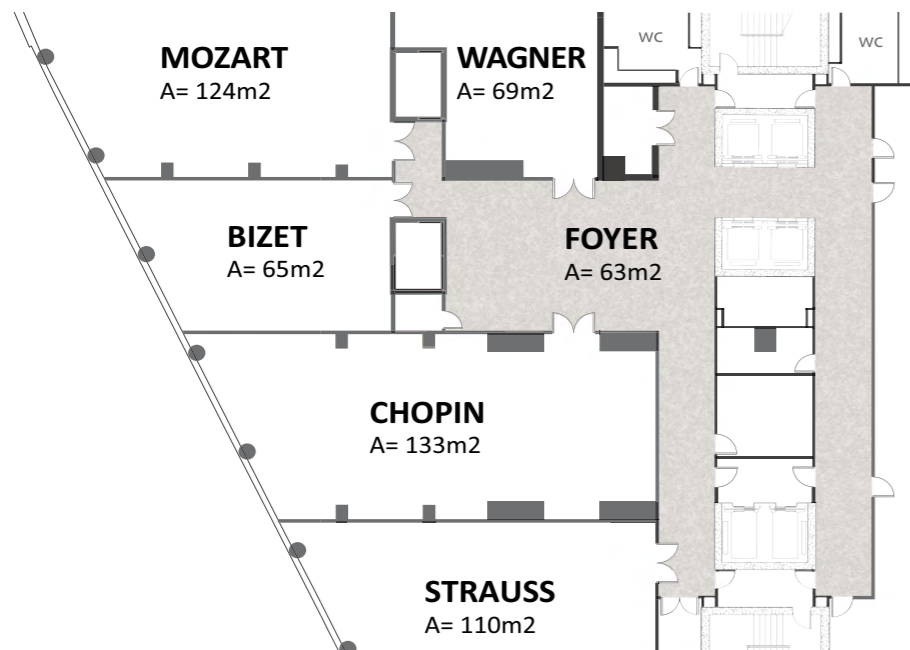
# MEETINGS & EVENTS

## 1<sup>ST</sup> FLOOR



	AREA		CEILING HEIGHT	THEATRE	CLASSROOM	"U" SHAPE	CABARET	COCKTAIL	BANQUET table 12 pax	BUFFET table 12 pax	BOARDROOM
	m <sup>2</sup>	ft <sup>2</sup>									
VERDI	370	3.99	3.89	400	235	99	132	400	252	216	114
PUCCINI (1)	130	1.40	3.27	100	70	36	42	120	96	84	42
ROSSINI (2)	90	972	3.27	50	48	30	24	100	60	48	36
BELLINI (3)	78	842	3.27	40	24	18	18	35	48	36	22
(1 + 2)	196	2.12	3.27	78	---	---	66	200	156	132	---
(2 + 3)	145	1.58	3.27	66	---	---	42	140	108	84	---
OPERA (1+2+3)	298	3.22	3.27	110	---	---	90	300	204	180	---

## 2<sup>ND</sup> FLOOR



	AREA		CEILING HEIGHT	THEATRE	CLASSROOM	"U" SHAPE	CABARET	COCKTAIL	BANQUET table 12 pax	BUFFET table 12 pax	BOARDROOM
	m <sup>2</sup>	ft <sup>2</sup>									
MOZART	137	1.48	2.47	110	60	36	30	100	96	60	36
BIZET	73	788	2.47	50	36	24	18	40	48	36	24
CHOPIN	144	1.55	2.49	110	72	42	36	100	96	72	42
WAGNER	68	734	2.39	50	24	18	18	40	48	36	24
STRAUSS	117	1.26	2.50	110	63	36	30	100	84	60	36



