

# Open and ready for you and your team to meet



# SAFETY first venue designed to build confidence with your delegates

We're with your delegates every step of the way to create a safe and successful event.

## Entrance

Exclusive entrance for your delegates.



## Getting here

Choice of public transport or driving and parking on site.



Please clean your hands regularly

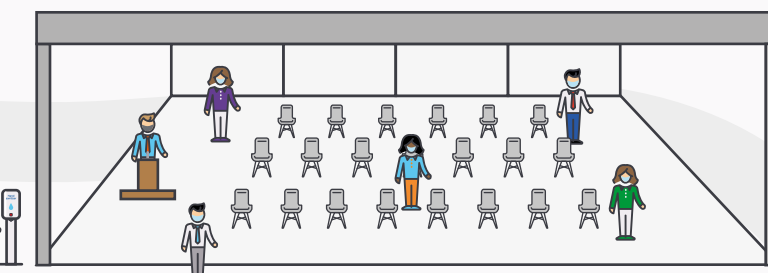
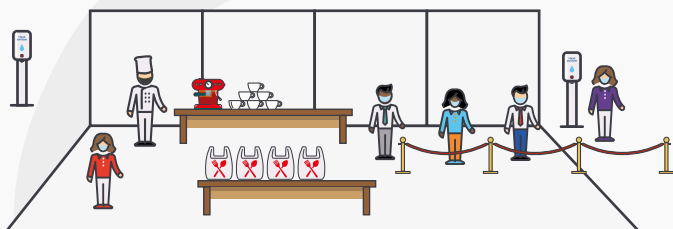


## Facilities

Covid-19 secure cleaning practices, hand sanitisers throughout the space, enhanced air conditioning.

## Food and beverage

Safe food preparation and service, including boxed food collection, packaged snacks and managed socially distanced queuing.



## Space for the event

Room set ups that enable safe distance between delegates, dedicated bathroom facilities with cleaning attendant.

Wishing you a safe journey.







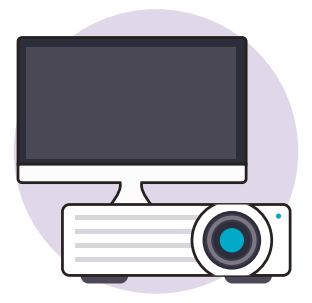
Expert team taking care of every aspect of your event



Space for safe distancing at every stage of the delegate experience



Wide range of private meeting and conference spaces with capacities based on government guidelines



Technology solutions and on-site support team for live-streaming



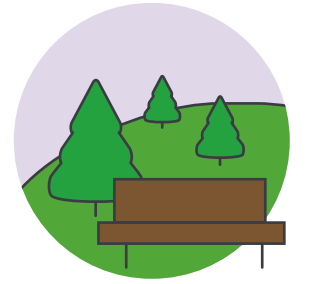
Free high speed wifi



Bespoke and imaginative catering to power your meetings



Light and airy environment



Direct access to outside space

**For more information hosting events safely go to:**  
[salesenquiries@excel.london](mailto:salesenquiries@excel.london)  
[www.excel.london/reopening](http://www.excel.london/reopening)

#### Assessment

Every event is different. Working in partnership with our clients we will assess the safety practices to meet the needs of their event.

#### Experience

Our aim is to minimise the impact on the guest experience, ensuring that expectations are set with everyone delivering the event.

#### Your responsibilities

There is a code of conduct for everyone visiting ExCeL to ensure they understand their role in keeping themselves and everyone else safe.

# S.A.F.E.T.Y.

#### Social Distance Management

Social distancing will be managed taking into account the latest government advice. Relevant markers will be installed in public areas to help everyone keep a safe distance.

#### Facilities

We have adapted the venue to ensure that events can run safely including a new cleaning regime, improved air circulation, hand sanitiser stations and one-way systems.

#### Training

Members of the ExCeL team will be trained to deliver our new policy and procedures, to ensure they uphold the highest possible standards.