

# TIVOLI

ORIENTE  
LISBOA  
HOTEL



## Comfortable and modern

Enjoy an unforgettable stay in Lisbon's most modern area

### Tivoli Oriente

Av. Dom João II - Nº27  
Parque das Nações, 1990-083 Lisboa - Portugal  
T. +351 218 915 100 · F. +351 218 915345  
Reservations.portugal@tivolihotels.com

[tivolihotels.com](http://tivolihotels.com)

DISCOVERY 



# / Tivoli Oriente

The modern Tivoli Oriente Lisboa Hotel has everything you need for your adventure in Lisbon.

Whether you are travelling for work or leisure, in this recently renovated haven you'll find comfort and a quality service to make your stay unforgettable.

Start the day with our varied buffet breakfast in the Salão Tivoli. Stay connected and keep up to date with national and international news in the executive Tivoli Caffé.

Replenish your energy with a healthy and balanced meal on the terrace or relax in the heated indoor swimming pool, Jacuzzi or in the renovated fitness centre.

In the late afternoon, take the lift to the Sky Bar Oriente to watch a stunning sunset with amazing views of the city and River Tagus with one of our delicious designer cocktails in hand accompanied by a tasty snack.

If you're looking to dine, discover the new Guilty Restaurant in Parque das Nações. With eclectic decoration and a relaxing atmosphere, this is the ideal spot for lunch with co-workers, a group dinner or enjoying a drink with friends.

Much more than just a stay, we provide a unique experience.



# / Location

Located in Parque das Nações, in the new Eastern area of Lisbon and just a 5-minute drive from Lisbon Airport, the hotel has exceptional access to the city's public transport network, main roads and to other amazing cities close to Lisbon, such as Sintra and Cascais.

With its contemporary architecture, Parque das Nações has everything you need to enjoy your visit to the full. There's easy access to the country's main conference and events centres, including the Altice Arena, the Lisbon International Trade Fair Centre and the Portuguese National Pavilion. Visit the Oceanarium, stroll around the Vasco da Gama Shopping Centre, relax with a walk along the riverside, take a trip in the riverside cable car or have some fun in the Casino.

**GPS: N 38° 45' 59,67", O 9° 05' 52,76"**



# / Accommodation

**279 Rooms and suites with double or twin beds, including:**

- |                                    |                                |
|------------------------------------|--------------------------------|
| <b>2</b> Executive Suite           | <b>42</b> Superior River View  |
| <b>6</b> Junior Suite – River View | <b>67</b> Superior Avenue View |
| <b>9</b> Junior Suite 30           | <b>98</b> Superior Avenue View |
| <b>41</b> Family Room              | <b>14</b> Superior Single Room |

## / Executive Suite

This suite of around 60m<sup>2</sup> is located on floor 15 of the hotel. With fabulous views of the River Tagus and contemporary decoration, it has a bedroom with double bed, a living room with sofa bed for two adults, a centre table, an independent dining room as well as two fully equipped bathrooms with shower and bath tub. Guests also have available a kettle and a Nespresso coffee machine.



## / Junior Suite – River View

These suites of around 40m<sup>2</sup> have views of the amazing River Tagus and are located on floors 10 to 15 of the hotel. With contemporary decoration, they have a bedroom with a double bed and an independent living area with a centre table and a sofa bed for two adults. They also have a fully equipped bathroom with shower or bath tub. Guests also have available a kettle and a Nespresso coffee machine.



## / Junior Suite

These rooms of around 40m<sup>2</sup> are located on floors 2 to 9 of the hotel and have views of the main avenue of Parque das Nações. Decorated in a contemporary style, these suites have a bedroom with double bed or twin beds, an independent living area with centre table and sofa bed for two adults, as well as a fully equipped bathroom with shower. Guests also have available a kettle and a Nespresso coffee machine.



## / Family Room

These rooms with an area of around 20m<sup>2</sup> have a double bed or twin beds and a single sofa bed or extra bed. With views of the city of Lisbon and Oriente Station, down the main avenue and the Parque das Nações business area, or over the amazing River Tagus, the rooms are located from floors 2 to 15 of the hotel. They also have work area with a table and chair and a fully equipped bathroom with shower or bath tub. Guests also have available a kettle and Nespresso coffee machine.



## / Superior River View

These rooms have superb views of the River Tagus and are located on floors 10 to 15 of the hotel. Around 20m<sup>2</sup> in area, they have contemporary decoration, a double bed or twin beds, work area with a table and chair and a fully equipped bathroom with shower or bath tub. Guests also have a Nespresso coffee machine.



## / Superior Avenue View

These rooms of around 20m<sup>2</sup> are located on floors 2 to 9 of the hotel and have views of the main avenue and the Parque das Nações business area. They have a double bed or twin beds, a work space with a table and chair and a fully equipped bathroom with shower. Guests also have a Nespresso coffee machine.



## / Superior City View

These rooms of around 20m<sup>2</sup> are located on floors 2 to 15 of the hotel and have superb views of the city of Lisbon and Oriente Station. They have a double bed or twin beds, a work space with a table and chair and a fully equipped bathroom with shower or bath tub. Guests also have a Nespresso coffee machine.



## / Superior Single Room

These rooms of around 18m<sup>2</sup> are located on floors 2 to 15 of the hotel and have views of the main avenue and Parque das Nações business area, or the amazing River Tagus. They have a single bed, a work space with a desk and chair and a fully equipped bathroom with shower or bath tub. Guests also have a Nespresso coffee machine.



# / Summary of Room Types

Type of Room	Nº		Type of Room	Floors
Superior Single Room	14	18m <sup>2</sup>	14 rooms with single beds	2 - 15
Superior City View	98	18m <sup>2</sup> - 20m <sup>2</sup>	59 rooms with double beds; 39 rooms with twin beds	2 - 15
Superior Avenue View	67	18m <sup>2</sup> - 20m <sup>2</sup>	57 rooms with double beds; 10 rooms with twin beds	2 - 9
Superior River View	42	20m <sup>2</sup>	30 rooms with double beds; 12 rooms with twin beds	10 - 15
Family Room	41	20m <sup>2</sup>	Xx rooms with double beds; xx rooms with twin beds	2 - 15
Junior Suites	9	40m <sup>2</sup>	8 rooms with double beds 1 room with twin beds	2 - 9
Junior Suite River View	6	40m <sup>2</sup>	40m <sup>2</sup> 6 Suites with double beds	14
Executive Suite	2	60m <sup>2</sup>	2 Suites with one bedroom with double beds	14 - 15

## / Rooms are equipped with

- Minibar
- Individual Air Conditioning
- Safe
- Nespresso Coffee Machine
- Kettle (in family rooms and suites)

## / Business Centre Services

- 24 hours
- 2 work stations
- Printer and scanner available

## / Leisure Services

- Tickets and trip reservations (via Experience Team)
- Gymnasium
- Heated indoor swimming pool
- Jacuzzi
- Sauna
- Turkish Bath
- Portuguese and foreign newspapers
- Free Wi-Fi

# / Health Centre

Use our Health Centre to stay in shape or to unwind after a busy day. Work out in the gym with state-of-the-art equipment. Do a few laps in the heated indoor swimming pool or relax in the Jacuzzi, sauna or Turkish Bath.

Opening hours: 05:00 – 01:00



# / Restaurants and Bars

Whether you are travelling for work or leisure, at the Tivoli Oriente Lisboa Hotel you'll find what suits you best and caters to your needs.

At the executive Tivoli Caffé, you'll find the ideal atmosphere for a business meeting or just to stay connected and up to date with world events. You can even take a break for a light meal on the terrace. The Guilty Restaurant in Parque das Nações is the ideal spot for lunch with co-workers, a group dinner or enjoying a drink with friends. You can refresh with one of our delicious designer cocktails in the Sky Bar Oriente while you take in a fantastic sunset and wind down after a hard day at work.

## TIVOLI CAFÉ TERRACE

Located in the most central area of Parque das Nações, the Tivoli Caffé Terrace is the perfect meeting point for tourists and residents. Ideal for a light healthy meal or afternoon snack where you can enjoy delicious crepes, waffles and craft ice cream.

**Open from April to October**

**Opening Hours:** 07:30 – 21:00

**Tel.:** (+351) 218 915 100



## TIVOLI CAFFÉ

Stay connected and keep up to date with national and international news in the Tivoli Caffé bar. Located on floor 1 of the hotel, in the Tivoli Caffé you'll find the perfect setting for your business meeting, or to enjoy a coffee or sundowner.

Open every day

Times: 09:00 – 19:00

Tel.: (+351) 218 915 100



## TIVOLI BALLROOM

Located on floor 1 of the hotel is the Salão Tivoli where we serve breakfast every day from 06:30 to 10:30.

Catering for up to 150, this versatile space is ideal for group meals and events.

## GUILTY ORIENTE

Young, modern, cosmopolitan. The Guilty Restaurant in Parque das Nações is a real lifestyle option and the new hotspot in the eastern side of Lisboa.

The relaxing atmosphere and the menu where pizzas, hamburgers, pastas and salads are the stars, with the signature of chefpreneur Olivier da Costa, make this restaurant the ideal place for lunch with co-workers, a group dinner or enjoying a drink with friends.

Much more than just a meal, we provide a unique experience.

**Times:**

From Sunday to Wednesday: 12:00 – 15:30 / 19:00 – 00:00

From Thursday to Saturday: 12:00 – 15:30 / 19:00 – 01:00

**Tel.:** (+351) 218 915 440



## SKY BAR ORIENTE

The first panoramic rooftop bar in Parque das Nações. With 360° views over the city of Lisbon and River Tagus, this relaxing bar has its own irreverent style and unique decoration. With an original menu of snacks to match our refreshing cocktails, the Sky Bar is a great place for a sundowner in the Portuguese capital.

Times: 17:00 to 01:00

Tel.: (+351) 218 915 100



## Hotel Services

- 24 Hour Room Service
- Free Wi-Fi
- Experience Team available 24 hours
- Paid parking
- Laundry Service
- Car Rental
- Activities kits for children
- Safe available in reception
- Pay TV

## Leisures Services

- Lisbon Oceanarium – 15-minute walk
- Lisbon Casino – 5-minute walk
- Vasco da Gama Shopping Centre - 4-minute walk
- Cinema (in the Vasco da Gama Shopping Centre)
- St. Jorge's Castle - 26-minute bus ride
- Altice Arena - 5-minute walk
- Beach - 30-minute drive
- Oriente Metro Station - 1-minute walk
- Golf course - 15-minute drive
- FIL (Lisbon International Trade Fair Centre) - 5-minute walk

## Conferences and Meetings at Tivoli Oriente

At the Tivoli Oriente hotel, in addition to the excellent capacity and accessibility of the installations, we also have a highly professional team who look after the coordination of every detail. With a character as distinct as the neighbourhoods they are named after, our 11 meeting rooms are equipped with state-of-the-art audiovisuals and cover a total area of 1,200m<sup>2</sup>. They are perfect for events of all types: congresses, business meetings, conferences and product presentations.

Host a special party, surprise with an innovative event or get married with a breathtaking view. At the Tivoli Oriente in Lisbon, you'll always find the perfect solution to meet your needs.

### Support Infrastructure

- 11 rooms equipped with state-of-the-art technology
- Welcome structures for groups
- Banquet room holding up to 150 people

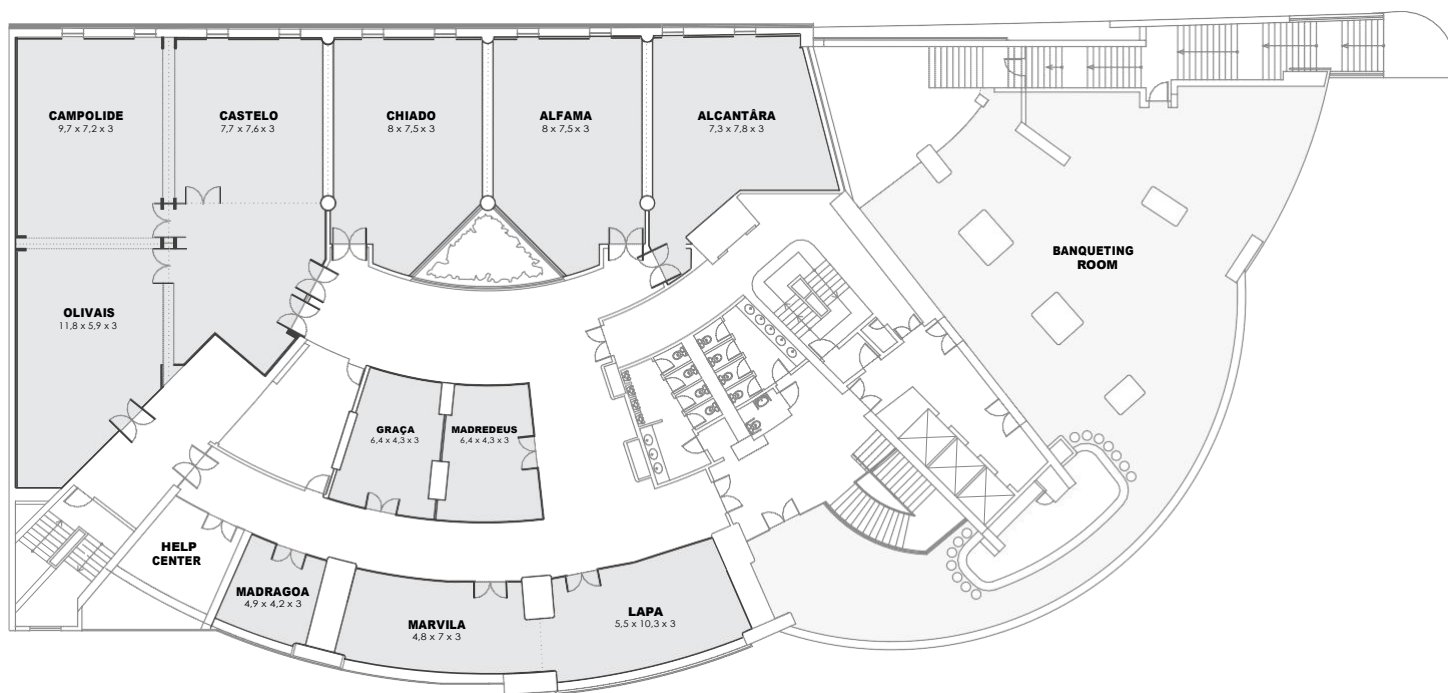
### Services Available

- Wi-Fi available in common areas, meeting rooms and rooms
- Pre and post event meeting with Events Team



# / Meeting Rooms Plan

Rooms	C x A x L	Area	Banquet	Cocktail	Classroom	Theatre	U Shape	Cabaret
Alcântara	7,33 x 7,8 x 3	68,3 sqm	40	-	30	45	24	25
Alfama	8 x 7,5 x 3	73,1 sqm	50	-	33	45	24	25
Chiado	8 x 7,5 x 3	73,1 sqm	50	-	33	45	24	25
Castelo	7,7 x 7,6 x 3	58 sqm	30	-	24	40	24	15
Campolide	9,7 x 7,2 x 3	68 sqm	40	-	34	50	24	20
Olivais	11,8 x 5,9 x 3	81,5 sqm	40	-	33	50	18	20
Graça	6,4 x 4,3 x 3	27 sqm	10	-	10	16	12	-
Madredeus	6,4 x 4,3 x 3	27 sqm	10	-	12	16	12	-
Madragoa	4,91 x 4,2 x 3	20 sqm	10	-	-	12	9	5
Marvila	4,8 x 7 x 3	41,5 sqm	30	-	22	30	22	15
Lapa	5,5 x 10,3 x 3	51,4 sqm	30	-	30	36	23	15
Lisboa Antiga*	-	348 sqm	280	550	210	400	-	140
Oriente**	-	250 sqm	160	300	140	230	45	130



## Tivoli Oriente

Av. Dom João II - N°27

Parque das Nações, 1990-083 Lisboa - Portugal T. +351 218 915 100 · F. +351 218 915 345

Reservations.portugal@tivolihotels.com

tivolihotels.com