



FOUR SEASONS  
HOTEL  
LONDON AT TEN TRINITY SQUARE

# A LANDMARK OF SOPHISTICATION

Reborn in the City's historic heart





# A NEW PERSPECTIVE OF LONDON

---

Steps from the Tower of London,  
Tower Bridge and the River Thames







## CAPITAL OF CULTURE

In this international capital of business and culture, Four Seasons Hotel London at Ten Trinity Square offers a remarkably central location – just 20 minutes from both the West End and the East End. The location is ideal for business travellers who need to be close to corporate headquarters in the City of London, and perfect for leisure travellers who want to stay in the heart of history. Nearby London attractions include the Tate Modern, Borough Market, St. Paul's Cathedral, Shakespeare's Globe Theatre and The Monument to the Great Fire of London. It's a short walk to vibrant districts, such as Spitalfields, Hoxton and Shoreditch. Our Four Seasons concierge team will help you discover the best of London, guided by your own unique interests.

[LEARN MORE ABOUT OUR LOCATION](#)







# ICON OF POWER AND PRESTIGE

---

Reimagining the headquarters of the  
Port of London Authority, opened in 1922

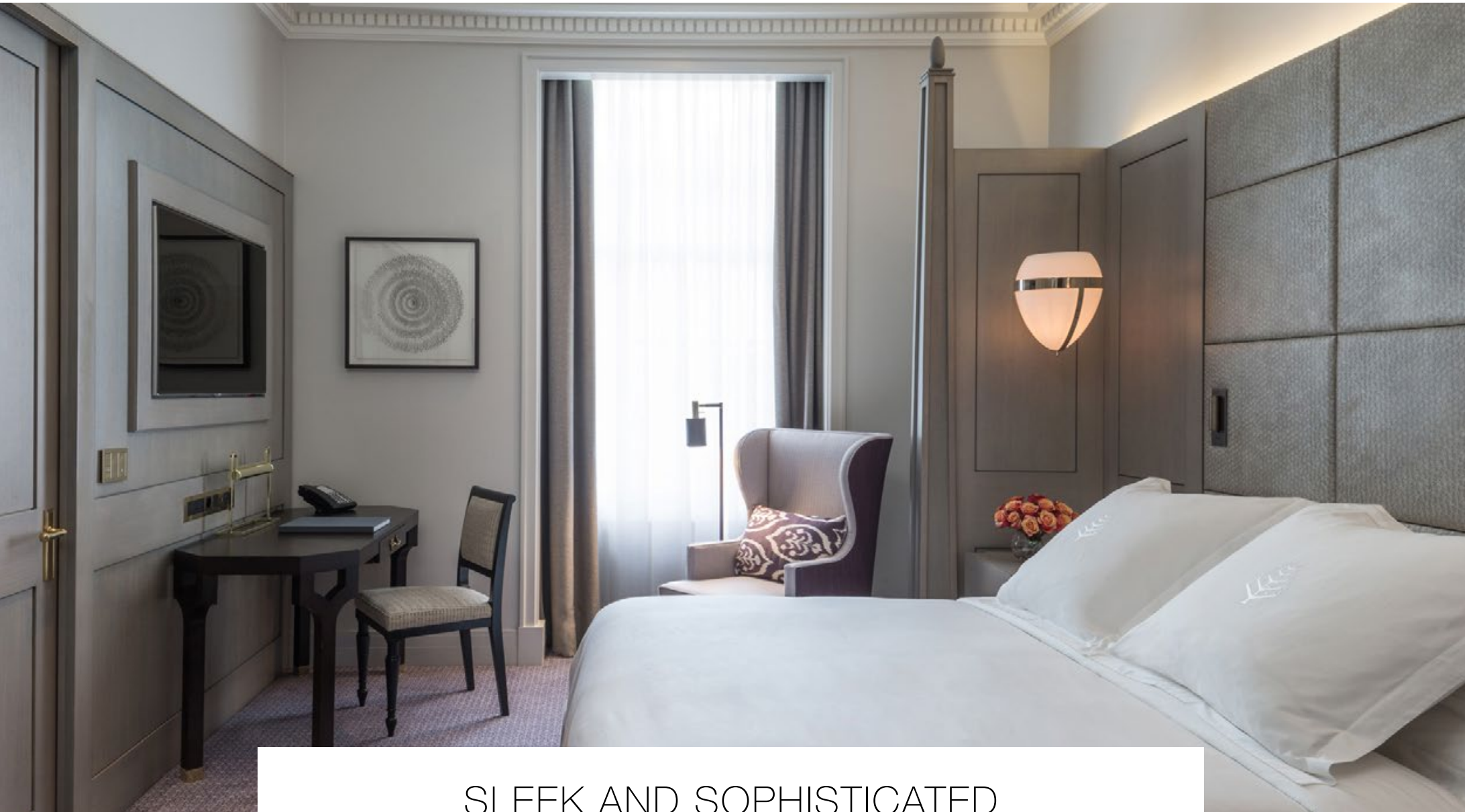




# RICH AND WARM

Celebrating the past,  
connected to the future

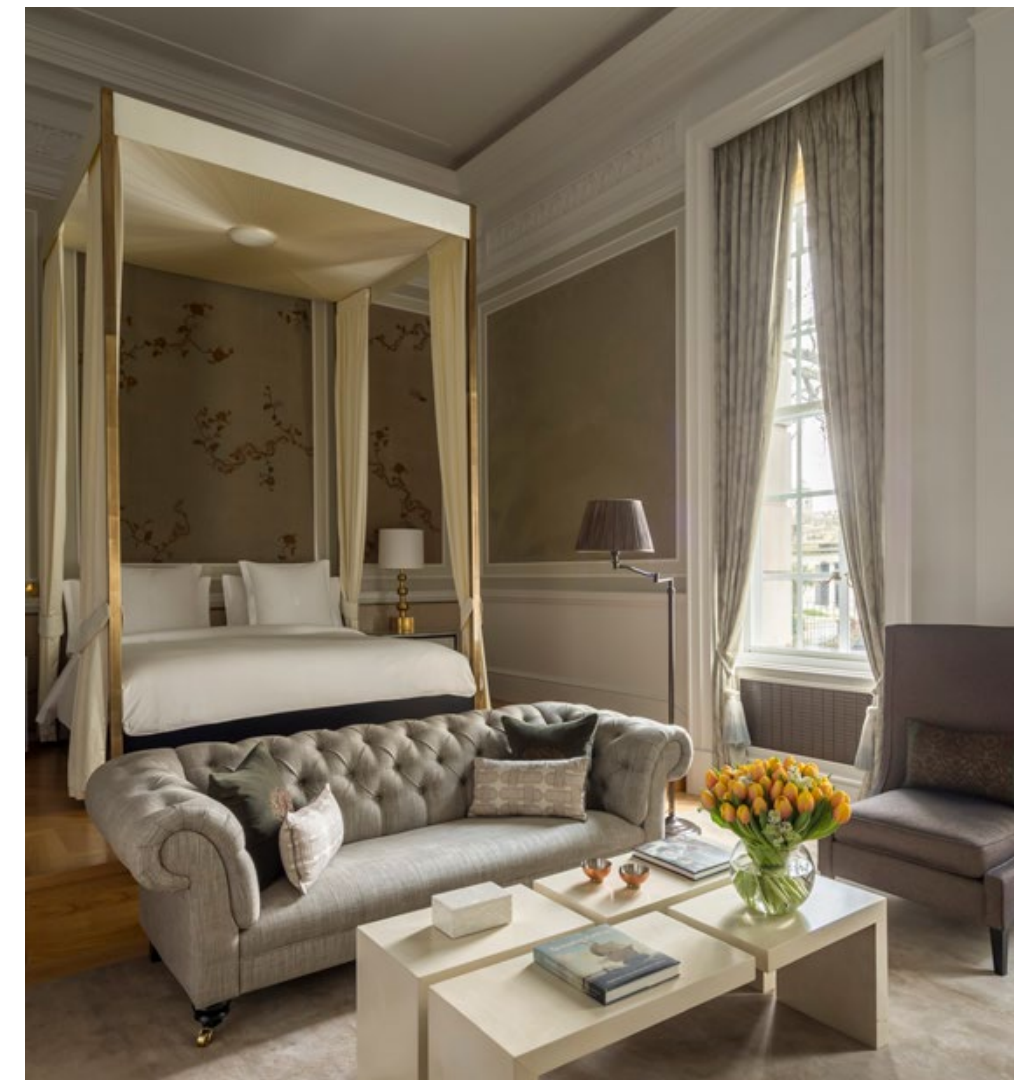




## SLEEK AND SOPHISTICATED

With just 110 accommodations, including 11 spacious suites and 10 residences – Four Seasons blends chic modern design with original architectural details from this 1922 landmark. Enter a world of relaxation with indulgent interiors featuring the legendary Four Seasons Bed, a private bar and intuitive technology. Bathrooms include heated floors and deluxe amenities. Enjoy constant peace of mind, Four Seasons intelligence and intuition always ready to enhance your stay.

[LEARN MORE ABOUT OUR ACCOMMODATIONS](#)







## BEST OF LONDON LIVING

---

Our residences are ideal for an extended stay, a family reunion or grand-scale private entertaining. Arrive through the majestic Four Seasons Hotel entrance, or you may prefer other, more discreet residential entrances. They can be reached by a dedicated lift and are located between the fourth and seventh floors. Select units offer fireplaces and terraces with a spectacular view over the Tower of London, Tower Bridge and the River Thames. With the Hotel and Private Club at your doorstep, life couldn't be more effortless.

**[LEARN MORE ABOUT OUR RESIDENCES](#)**

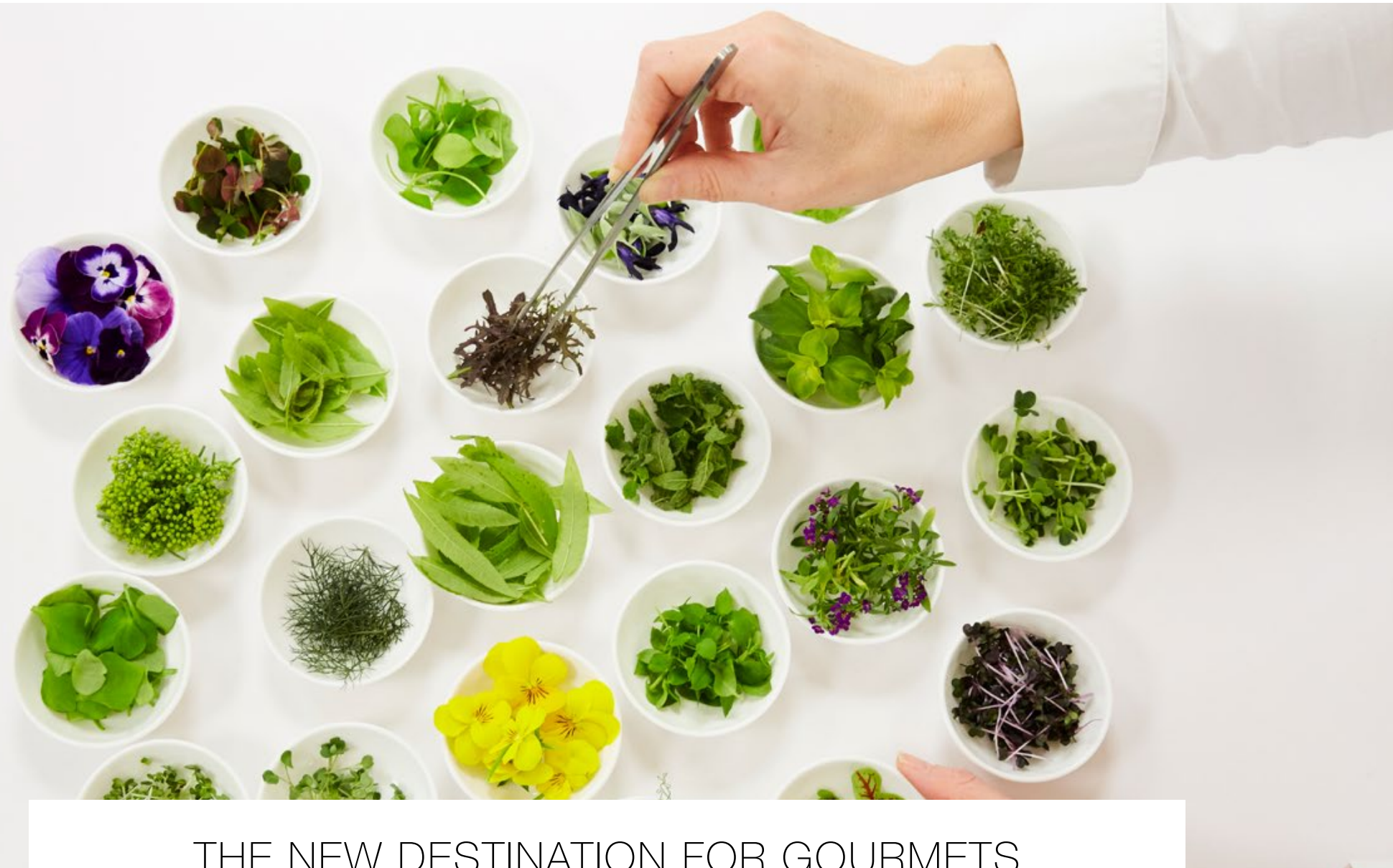




# SOCIALISE IN THE ROTUNDA

A vibrant meeting place beneath  
an art-deco domed ceiling

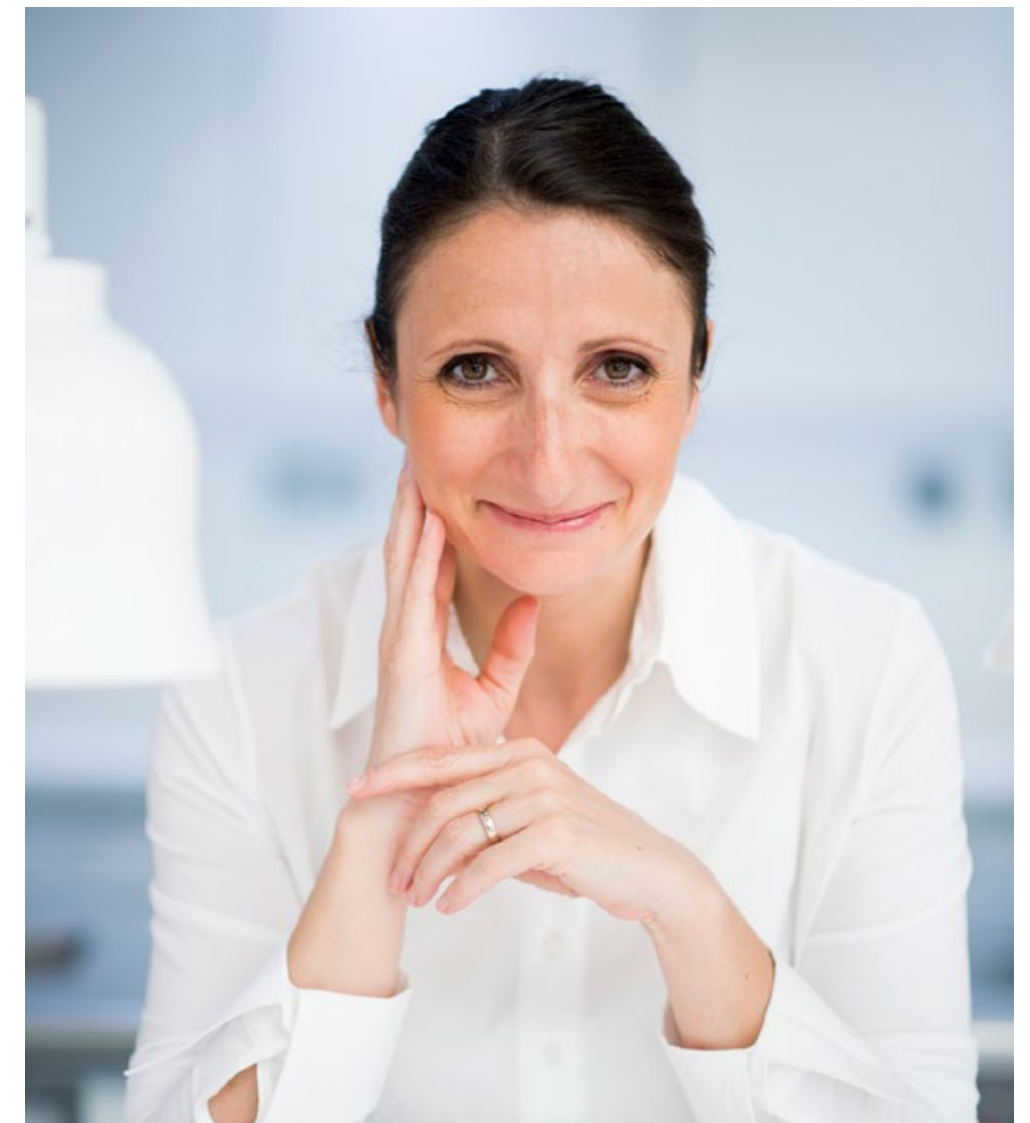




## THE NEW DESTINATION FOR GOURMETS

Discover a fashionable new landmark for dining and entertaining in the City. La Dame de Pic London is the first UK restaurant by Chef Anne-Sophie Pic, the only current French female chef to be awarded three Michelin stars. Experience her signature French cuisine and unexpected flavour combinations. At our sleekly designed Asian restaurant, Mei Ume, taste Chinese and Japanese specialties, including peking duck, sushi and sashimi; or come to the Rotunda for stylish, light breakfasts, lunches and drinks after work. Bringing endless finesse, Four Seasons service is warm, thoughtful and friendly.

**LEARN MORE ABOUT OUR DINING**



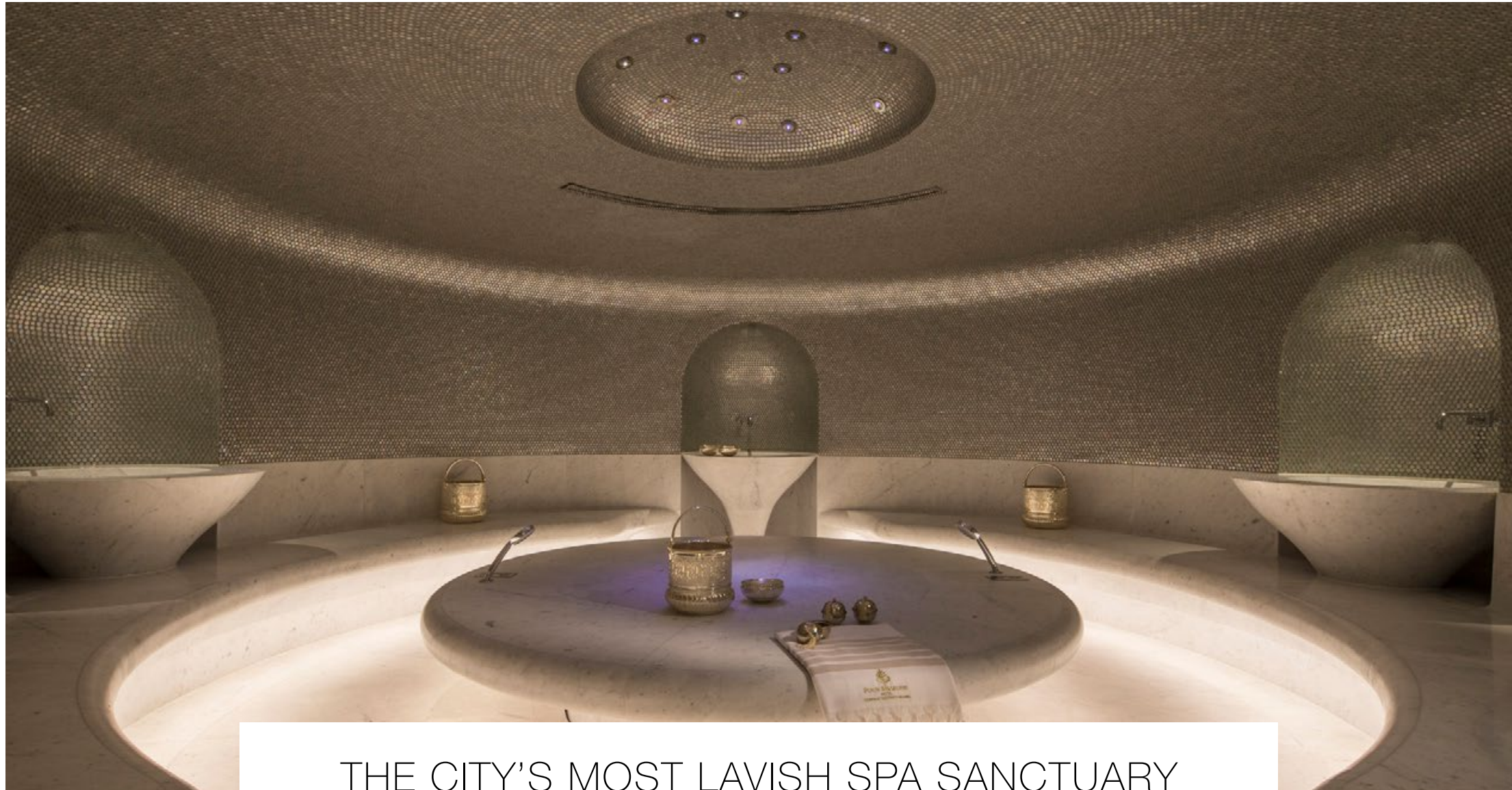


# SOOTHING WATERS

---

Unwind in our indoor pool,  
vitality pool, steam room and sauna





## THE CITY'S MOST LAVISH SPA SANCTUARY

Relax in a soothing enclave inspired by London's ancient Roman history. Colours and materials are inspired by the precious minerals mined by the Romans, lending an atmosphere of timeless serenity. In spacious treatment rooms, experience transformative facials, massages and body therapies. Or discover exclusive Moroccan treatments in our circular Hammam Suite. Enjoy the finest manicures and pedicures in the Finishing Touches Nail Salon; and energise in our Fitness Centre designed for state-of-the-art workouts and private yoga.

[LEARN MORE ABOUT OUR SPA](#)







# GATHER IN THE UN BALLROOM

Setting for the inaugural reception of the  
United Nations General Assembly in 1946





## ELEGANT ENTERTAINING

A prestigious new destination for meetings, events and weddings, Four Seasons Hotel London at Ten Trinity Square celebrates the capital's rich history and culture, yet feels connected to the future with all the latest technology. With approximately 595 m<sup>2</sup> (6,403 sq. ft.) of function space, Four Seasons offers two ballrooms and three smaller meeting rooms, conveniently grouped on the first and second floors – hosting up to 200 guests for receptions or 150 for seated dinners. Expert Four Seasons event planners will orchestrate an unforgettable occasion.

**[LEARN MORE ABOUT OUR MEETINGS AND EVENTS](#)**







## ACCOMMODATIONS

- With only 110 accommodations, including 11 spacious suites and 10 residences – located on the ground to sixth floors
- Exquisitely restored neo-classical interiors, infused with chic, modern design

## DINING

- Michelin starred La Dame de Pic London is the first UK restaurant by Chef Anne-Sophie Pic, serving innovative French cuisine in a warm and elegant environment
- Sleek Asian restaurant, Mei Ume, for Chinese and Japanese dishes
- The Rotunda for all-day dining and after-work cocktails
- 24-hour In-Room Dining

## SPA & RECREATION

- The City of London’s most lavish spa sanctuary, encompassing 1,680 m<sup>2</sup> (18,083 sq. ft.)
- Eight spacious treatment rooms, including a Spa Suite for couples and a hammam suite for steam treatments
- State-of-the-art Fitness Centre
- 14-metre (46-foot) pool, vitality pool, sauna and steam
- Finishing Touches nail salon for manicures and pedicures

## MEETINGS AND EVENTS

- Ideal for business meetings, social celebrations and glamorous weddings – hosting up to 200 for receptions
- Approximately 595 m<sup>2</sup> (6,403 sq. ft.) of function space, grouped on the first and second floors
- UN Ballroom for classic grandeur with high ceilings, Corinthian columns, walnut panelling and two crystal chandeliers
- Merchants Hall for a unique circular ballroom glowing with natural light from its circumference of windows
- Three wood-panelled function rooms ideal for board meetings, private dinners or cocktail receptions for up to 16 guests

## LOCATION

- One of London’s most remarkably central locations – midway between West End shopping and theatre, and the second financial district at Canary Wharf
- On the southeast corner of the City of London – a 10-minute walk to the Bank of England
- Within steps of the Tower of London, Tower Bridge and the River Thames
- Two-minute walk to the London Underground station at Tower Hill, connecting on the District and Circle Lines
- 20 minutes to London City Airport, 70 minutes to Heathrow and 80 minutes to Gatwick

## CONNECT WITH US

**[fourseasons.com/tentrinity](https://fourseasons.com/tentrinity)**



Four Seasons Hotel London at Ten Trinity Square  
10 Trinity Square, EC3N 4AJ London, England  
Tel. 44 (20) 3297 9200

### **VIEW OUR DIRECTIONS & MAP**

The marks “FOUR SEASONS”, “FOUR SEASONS HOTELS AND RESORTS”, any combination thereof and the Tree Design are registered trademarks of Four Seasons Hotels Limited in Canada and U.S.A. and of Four Seasons Hotels (Barbados) Ltd. elsewhere.

FSTRI090002e / Updated: 03/2019