

GRAND HYATT NEW YORK

Park Avenue at Grand Central
New York, NY 10017, USA

+1 212 883 1234 TELEPHONE

+1 212 697 3772 FAX

grandnewyork.hyatt.com

GRAND | HYATT®

ACCOMMODATIONS

1,298 modern guest rooms, including 43 suites ranging in size from 600 to more than 3,000 square feet: Corner Suite, Junior Suite, Grand Executive Suite, Grand City View Suite, Premier Suite, Park Avenue Presidential Suite, a Grand Club executive lounge, and more.

All Accommodations Offer:

- Hyatt Grand Bed™ featuring pillow-top mattress, triple sheeting, plush pillows, and a luxurious down comforter
- Complimentary in-room WiFi internet access
- Flat Screen HDTVs
- Individual refrigerator
- In-room safety-deposit box
- Turn-down service available upon request
- Bathroom features imported stone flooring, and June Jacobs bath products
- Cubieblue Alarm Clock with bluetooth connectivity
- Spacious work area and enhanced touch panel lighting

SERVICES & FACILITIES

- Express check-in kiosks; Web check-in
- 1-800-CHECK-IN®
- Concierge services
- 24-hour business center with administrative services
- Multilingual staff
- Same-day laundry service
- Valet parking
- Currency Exchange
- Wi-Fi capability in all public areas

LOCATION

With a premier Midtown Manhattan location and stylishly modern guest rooms, Grand Hyatt New York offers convenient access to the entire Big Apple and a comfortable respite at the end of the day

DIRECTIONS

Conveniently connected to Grand Central Terminal and Metro North, with easy access to major corporations and the suburbs 9 miles from LaGuardia airport, 18 miles from JFK International Airport, and 20 miles from Newark International Airport

POINTS OF INTEREST

- Grand Central Terminal
- Chrysler Building
- Times Square
- Central Park
- Broadway Theatres
- United Nations Complex
- Empire State Building
- Rockefeller Center
- Statue of Liberty
- Ellis Island
- Fifth Avenue shopping
- Bryant Park
- The New York Public Library
- City's best dining and nightlife

RESTAURANTS & BARS

- **New York Central**—A full service kitchen, bar and lounge offering a diverse menu inspired by local flavors, exquisitely crafted cocktails and a self-service Wine Gallery
- **Market**—A 24-hour gourmet grab-and-go serving fresh coffee beverages, breakfast, lunch, and dinner options

MEETING & EVENT SPACE

- Ideal for groups looking for a more exclusive venue, the hotel offers 60,000 square feet of meeting space
- The Empire Ballroom offers 18,370 square feet of flexible event space to serve larger banquets or smaller receptions; the contemporary Manhattan Ballroom features dazzling views of the city and is an ideal space for an impressive presentation or for hosting a reception
- The Conference Level features 18 flexible meeting rooms and state-of-the-art board rooms; the 14th Floor features 22 special function executive boardrooms for smaller, more intimate meetings
- contemporary event space, Gallery on Lex featuring modern technology and residential furniture ideal for executive events and creative receptions
- New Museum event space in the lobby, overlooking "Awilda, Chloe" by world renowned artist Jaume Plensa and a striking infinity water wall feature
- Renowned catering, featuring Personal Preference Dining®
- On-site audiovisual department
- Adjoining Grand Central Terminal

RECREATIONAL FACILITIES

- 24-hour Fitness Center



GRAND HYATT NEW YORK

Park Avenue at Grand Central
New York, NY 10017, USA

+1 212 883 1234 TELEPHONE

+1 212 697 3772 FAX

grandnewyork.hyatt.com

GRAND | HYATT®

CAPACITY CHART



ROOM NAME	ROOM DIMENSIONS L X W X H	ROOM SIZE SQ. FT.	BANQUET	RECEPTION	THEATER	CLASSROOM	BOARDROOM	U-SHAPE	HOLLOW SQUARE
Lobby Level									
MANHATTAN BALLROOM	58' x 92' x 24'	5,000	350	500	480	225	—	—	—
MUSEUM	65' x 35'	2,275	160	300	—	—	—	—	—
GALLERY ON LEX	120' x 31' x 9'	4,968	200	300	—	—	—	—	—
GALLERY I	50' x 31' x 9'	1,550	90	125	84	42	28	28	28
GALLERY I & II	75' x 31' x 9'	2,175	120	150	84	42	28	28	30
GALLERY II	25' x 31' x 9'	625	16	80	—	—	—	—	—
GALLERY II & III	70' x 31' x 9'	1,925	120	150	84	42	28	28	30
GALLERY III	45' x 31' x 9'	1,300	90	150	84	42	28	28	28
Mezzanine Level									
MEZZANINE	66' x 184' x 8'	3,800	200	380	—	—	—	—	—
REGENCY	41' x 34' x 8'	1,394	100	150	140	75	40	45	50
CHRYSLER ROOM	28' x 30' x 8'	840	60	90	64	42	30	25	32
PARK AVENUE ROOM	28' x 30' x 8'	840	60	90	64	42	30	25	32
Conference Level									
SHUBERT	30' x 15' x 8'	460	—	—	—	—	16	—	—
MAJESTIC	30' x 28' x 8'	840	—	—	—	—	22	—	—
BOOTH	35' x 16' x 8'	560	40	40	40	18	24	21	24
IMPERIAL	35' x 34' x 8'	1,190	70	75	80	40	28	31	34
MOROSCO	30' x 32' x 8'	1,120	70	75	80	40	28	31	34
PLYMOUTH	30' x 18' x 8'	540	30	30	35	15	20	17	24
ROYALE	30' x 18' x 8'	540	—	—	—	—	16	—	—
AMBASSADOR	30' x 10' x 8'	150	—	—	—	—	6	—	—
ORPHEUM	35' x 10' x 8'	560	40	40	44	18	24	21	24
GERSHWIN	15' x 10' x 8'	150	—	—	—	—	6	—	—
URIS	28' x 30' x 8'	840	60	90	64	42	30	25	32
JULLIARD	28' x 25' x 8'	700	50	50	60	36	24	21	30
BROADWAY	28' x 45' x 8'	1,260	110	110	132	72	36	31	50
CARNEGIE	28' x 25' x 8"	700	50	50	60	36	24	21	30
ALVIN	28' x 30' x 8'	840	60	90	64	42	30	25	32
PALACE	30' x 18' x 8'	540	—	—	—	—	16	—	—
EDISON	30' x 18' x 8'	540	30	30	40	18	18	17	20
WINTER GARDEN	35' x 16' x 8'	560	40	30	44	20	20	20	22

Note: Meeting room capacities are for room sets without audiovisual or staging

GRAND HYATT NEW YORK
Park Avenue at Grand Central
New York, NY 10017, USA

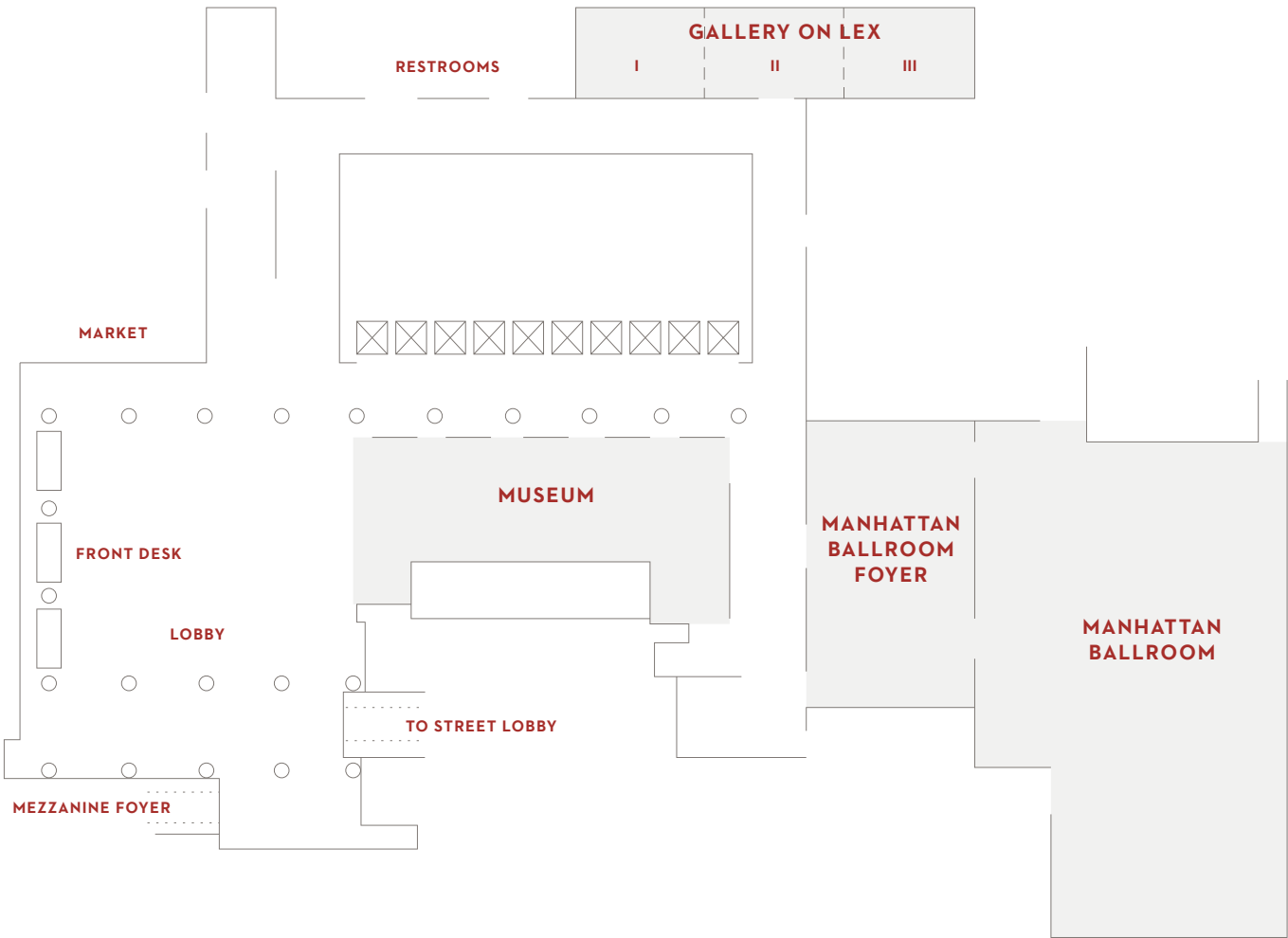
+1 212 883 1234 TELEPHONE
+1 212 697 3772 FAX

grandnewyork.hyatt.com



GRAND | HYATT®

FLOOR PLAN
Lobby Level



GRAND HYATT NEW YORK

Park Avenue at Grand Central
New York, NY 10017, USA

+1 212 883 1234 TELEPHONE

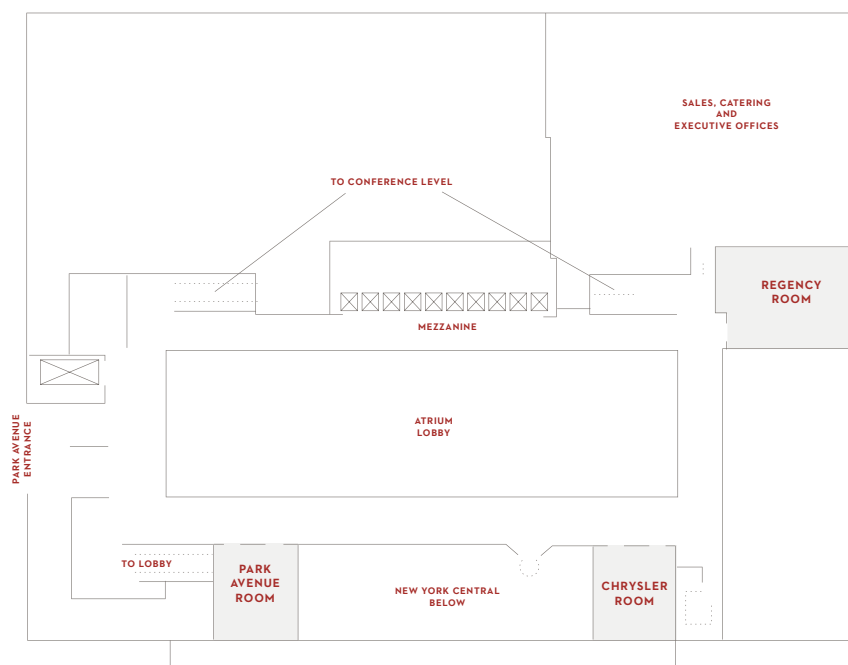
+1 212 697 3772 FAX

grandnewyork.hyatt.com

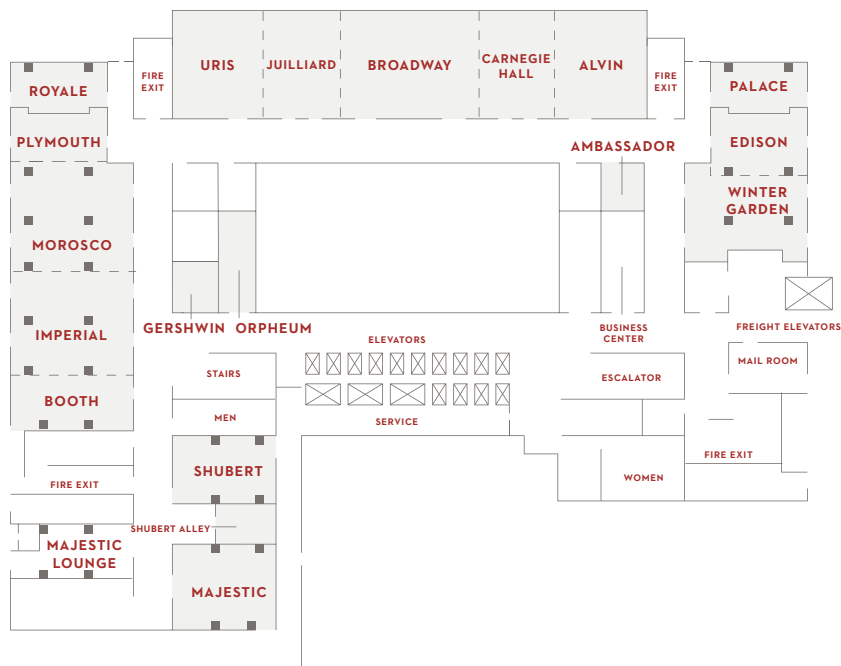


FLOOR PLAN

Mezzanine Level



Conference Level



Note: Meeting room capacities are for room sets without audiovisual or staging

GRAND HYATT NEW YORK

Park Avenue at Grand Central
New York, NY 10017, USA

+1 212 883 1234 TELEPHONE

+1 212 697 3772 FAX

grandnewyork.hyatt.com

GRAND | HYATT®

CAPACITY CHART



ROOM NAME	ROOM DIMENSIONS L X W X H	ROOM SIZE SQ. FT.	BANQUET	RECEPTION	THEATER	CLASSROOM
<i>Ballroom Level</i>						
EMPIRE STATE BALLROOM	—	18,370	1,700	—	—	—
EMPIRE STATE BALLROOM FOYER	—	7,600	—	800	—	—
BALLROOM I	87' x 44' x 18'	3,828	300	350	352	228
BALLROOM II	60' x 55' x 26'	3,300	340	340	336	216
BALLROOM III	66' x 71' x 26'	4,686	470	470	488	300
BALLROOM IV	60' x 55' x 26'	3,300	340	340	336	216
BALLROOM V	74' x 44' x 18'	3,256	250	280	288	189
BALLROOM I & II	—	7,128	640	690	—	—
BALLROOM I, II & III	—	11,814	1,110	1,160	—	—
BALLROOM I, II, III, & IV	—	15,147	1,450	1,520	—	—
BALLROOM II & III	66' x 126' x 26'	7,986	810	810	824	525
BALLROOM II, III & IV	60' x 181' x 26'	11,286	1,150	1,150	1,160	741
BALLROOM III, IV & V	—	11,242	1,060	1,110	—	—
BALLROOM IV & V	—	6,556	590	640	—	—

GRAND HYATT NEW YORK

Park Avenue at Grand Central
New York, NY 10017, USA

+1 212 883 1234 TELEPHONE

+1 212 697 3772 FAX

grandnewyork.hyatt.com

GRAND | HYATT®

CAPACITY CHART



ROOM NAME	ROOM DIMENSIONS L X W X H	ROOM SIZE SQ. FT.	BOARDROOM
<i>14th Floor Executive Boardrooms</i>			
EXECUTIVE BOARDROOM 1	48' x 17' x 9'	816	30
EXECUTIVE BOARDROOM 2	19' x 17' x 9'	323	10
EXECUTIVE BOARDROOM 3	17' x 21' x 9'	357	10
EXECUTIVE BOARDROOM 4	18' x 21' x 9'	378	10
EXECUTIVE BOARDROOM 5	27' x 13' x 9'	351	12
EXECUTIVE BOARDROOM 6	25' x 13' x 9'	325	10
EXECUTIVE BOARDROOM 7	23' x 12' x 9'	276	10
EXECUTIVE BOARDROOM 8	23' x 19' x 9'	437	10
EXECUTIVE BOARDROOM 9	41' x 17' x 9'	697	20
EXECUTIVE BOARDROOM 10	23' x 18' x 9'	414	12
EXECUTIVE BOARDROOM 11	20' x 18' x 9'	360	10
EXECUTIVE BOARDROOM 12	21' x 19' x 9'	399	10
EXECUTIVE BOARDROOM 13	18' x 21' x 9'	378	10
EXECUTIVE BOARDROOM 14	18' x 20' x 9'	360	10
EXECUTIVE BOARDROOM 15	25' x 13' x 9'	325	10
EXECUTIVE BOARDROOM 16	45' x 17' x 9'	765	16
EXECUTIVE BOARDROOM 17	23' x 12' x 9'	276	10
EXECUTIVE BOARDROOM 18	45' x 18' x 9'	810	30
EXECUTIVE BOARDROOM 19	28' x 15' x 9'	420	15
EXECUTIVE BOARDROOM 20	22' x 12' x 9'	264	10
EXECUTIVE BOARDROOM 21	29' x 19' x 9'	551	15
EXECUTIVE BOARDROOM 22	30' x 16' x 9'	480	16

Note: Executive Boardroom level offers flexible meeting space that can be customized to meet your needs. Meeting room capacities are for room sets without audiovisual or staging.

GRAND HYATT NEW YORK
Park Avenue at Grand Central
New York, NY 10017, USA

+1 212 883 1234 **TELEPHONE**

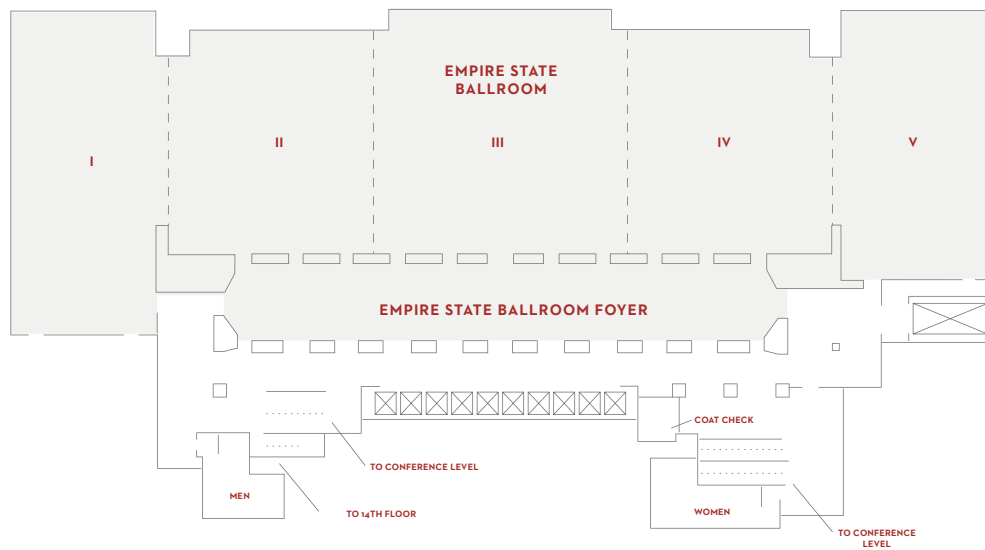
+1 212 697 3772 **FAX**

grandnewyork.hyatt.com

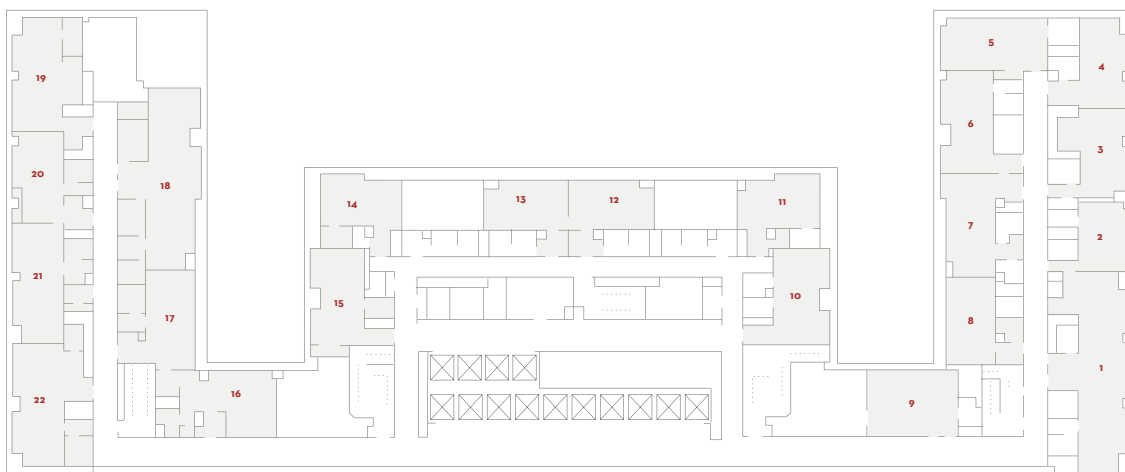


GRAND | HYATT®

FLOOR PLAN
Ballroom Level



14th Floor Executive Boardrooms



Note: Meeting room capacities are for room sets without audiovisual or staging.