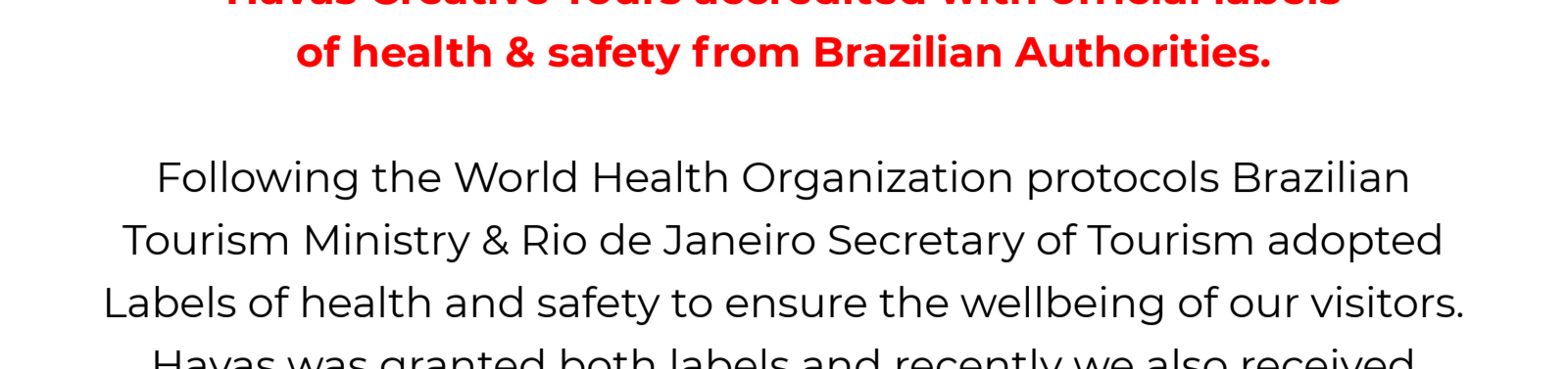




# COVID SAFETY PROTOCOLS

## HAVAS CREATIVE TOURS

BRAZIL



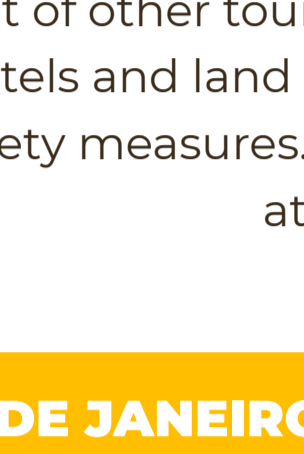
**Havas Creative Tours accredited with official labels of health & safety from Brazilian Authorities.**

Following the World Health Organization protocols Brazilian Tourism Ministry & Rio de Janeiro Secretary of Tourism adopted Labels of health and safety to ensure the wellbeing of our visitors.

Havas was granted both labels and recently we also received the Safe Travels Label, awarded by the World Travel and Tourism Council.

Being approved by these labels means our company is attending good hygiene practices and respecting norms / protocols of health and safety to ensure the actions against COVID 19 in Brazil.

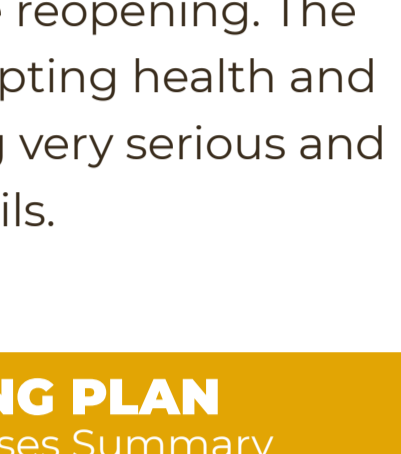
Havas Creative Tours is prepared to receive clients with all the safety measures in place.



RESONABLE TOURISM (Turismo Responsável)



CONSCIOUS TOURISM RIO DE JANEIRO (Turismo Consciente Rio de Janeiro)



SAFE TRAVELS (WTTTC)

Rio de Janeiro already went through the 6 phases of the reopening process. **Several hotels are back in operation with special prices and promotions.** Paraty, Búzios and a lot of other touristic cities all over Brazil are reopening. The hotels and land service suppliers are all adopting health and safety measures. The tourism sector is being very serious and attentive to the smallest details.

### RIO DE JANEIRO REOPENING PLAN

Reopening Phases Summary

	PHASE 1	PHASE 2	PHASE 3	PHASE 4	PHASE 5	PHASE 6
	Jun 2nd	Jun 17th	Jul 7th	Jul 17th	Aug 1st	Aug 16th
Trade	✓	✓	✓	✓	✓	✓
Bars & Restaurants	✓	✓	✓	✓	✓	✓
GYM	○	○	✓	✓	✓	✓
Services	✓	✓	✓	✓	✓	✓
Education	THE REOPENING OF SCHOOLS WAS POSTPONED.					
Tourism	✓	✓	✓	✓	✓	✓
Aesthetic Services	○	○	✓	✓	✓	✓
Open Environments	○	○	✓	✓	✓	✓
Health	✓	✓	✓	✓	✓	✓
Religious events and funeral	✓	✓	✓	✓	✓	✓
Culture	✓	✓	✓	✓	✓	✓
Sports and Leisure	✓	✓	✓	✓	✓	✓

○ CLOSED    ✓ OPEN WITH RESTRICTIONS    ✓ OPEN

### SOME OF THE MEASURES

Below you will find a list of procedures that are being adopted to create a safer environment for the travelers:

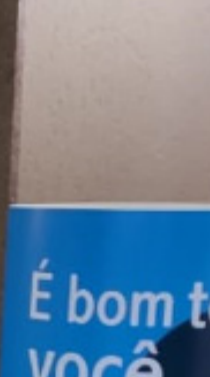
#### HOTELS



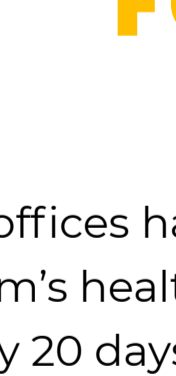
Hotels will provide alcohol 70% in the room and in the common areas.



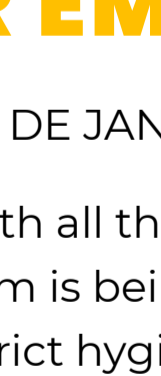
Signage at check-in and check-out for social distance.



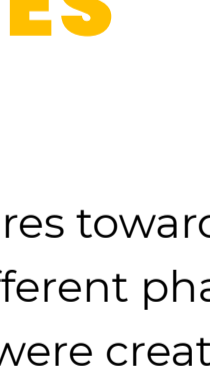
In the first opening phase the hotels will be operating with less capacity.



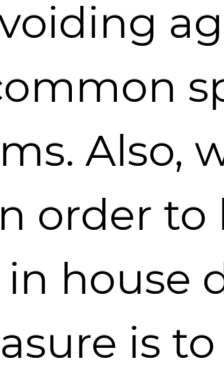
Air Conditioners are sanitized with specific anti-bacterial products.



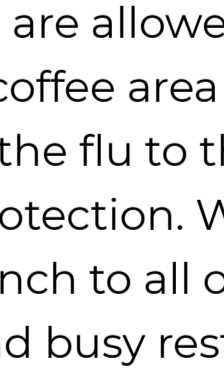
Hotel areas and rooms will be sterilized with cleaning products by a specialized team.



Body temperature checks with proximity sensor will be performed.

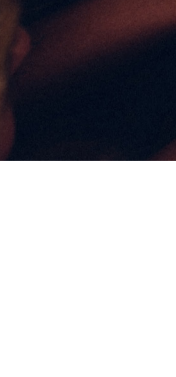


Safety distance from tables and less people will be allowed inside hotel restaurants. Some hotels will also offer in-room dining as a security measure.

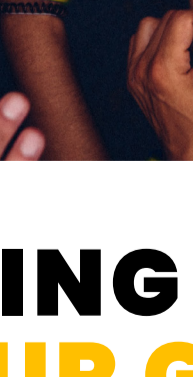


Masks will be given to guests on their arrival. The use of masks will be mandatory for all guests and employees.

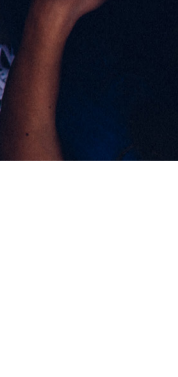
#### TRANSPORTATION



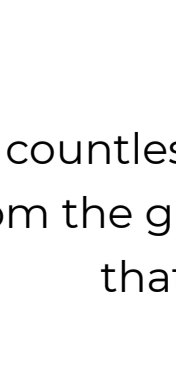
Availability of alcohol in gel for drivers and passengers.



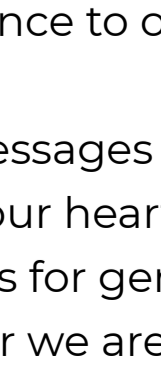
Avoid physical contact such as handshakes.



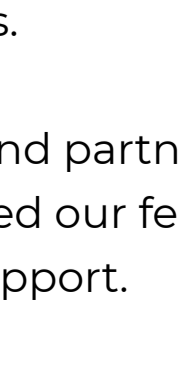
Mandatory use of disposable masks by drivers.



Hygienization of the air conditioning system and activated air circulation function.



Temperature check of all employees involved in the service.



Bathrooms cleaned and supplied with liquid soap, toilet paper and paper towels.



Small transports will have acrylic dividers on small vehicles to separate passengers from driver and guide.



Cleaning of the vehicle's internal and external parts before, during and after service.

#### GUIDES



Full training of our team on protocol measures and crisis management.



Guides constantly monitored for fever, hygiene, use of masks, alcohol gel 70% and other personal protective equipment.



### A SAFER WORK ENVIRONMENT FOR OUR EMPLOYEES

RIO DE JANEIRO

Our offices have reopened with all the safety measures towards our team's health. All of our team is being tested in different phases, every 20 days. Extremely strict hygiene protocols were created to be followed in the office, such as, alcohol 70% available across the office, our air conditioners were sanitized by a specialized company and only 2 employees working per cabin.

A portal was allocated spraying a thin layer of alcohol gel when entering the office. Automatic disposable shoe covers, masks for each one, and physical distance are some of the measures taken right now. The teams taking rounds and working on alternated days avoiding agglomeration. Only 4 people are allowed to be in the common spaces per time, such as the coffee area and the bathrooms. Also, we provided vaccine against the flu to the whole team in order to help with immunological protection. We have built an in house dinning hall, providing full lunch to all our team. This measure is to avoid circulation in malls and busy restaurants, as well as ensure a healthy meal. **All the efforts are being made to provide a better place to work and to create a culture of care and protection between our employees.**



### TAKING CARE OF OUR GUIDES

HAVAS CREATIVE TOURS

Our team of guides are the welcome card to our beautiful country. It is the power of understanding and enchanting each client that makes one's visit to Brazil with Havas Creative Tours team so special. In order to support our team of guides during the months of closed frontiers due to the pandemic, we offered a financial advance to our head guides.

The countless emotional messages of friendship and partnership from the guides touched our hearts and reinforced our feeling that these are times for generosity and support. Together we are stronger!

