



SUITES

HOTEL *Bel-Air*

Dorchester Collection



CONTENTS

Introduction

Junior Pool Suite

Bel-Air Suite with Patio

Premier Canyon Suite

Grand Suite

Swan Lake Suite

Patio Suite

Grace Kelly Suite

Stone Canyon Suite

Herb Garden Suite

Chalon Suite

Presidential Suite



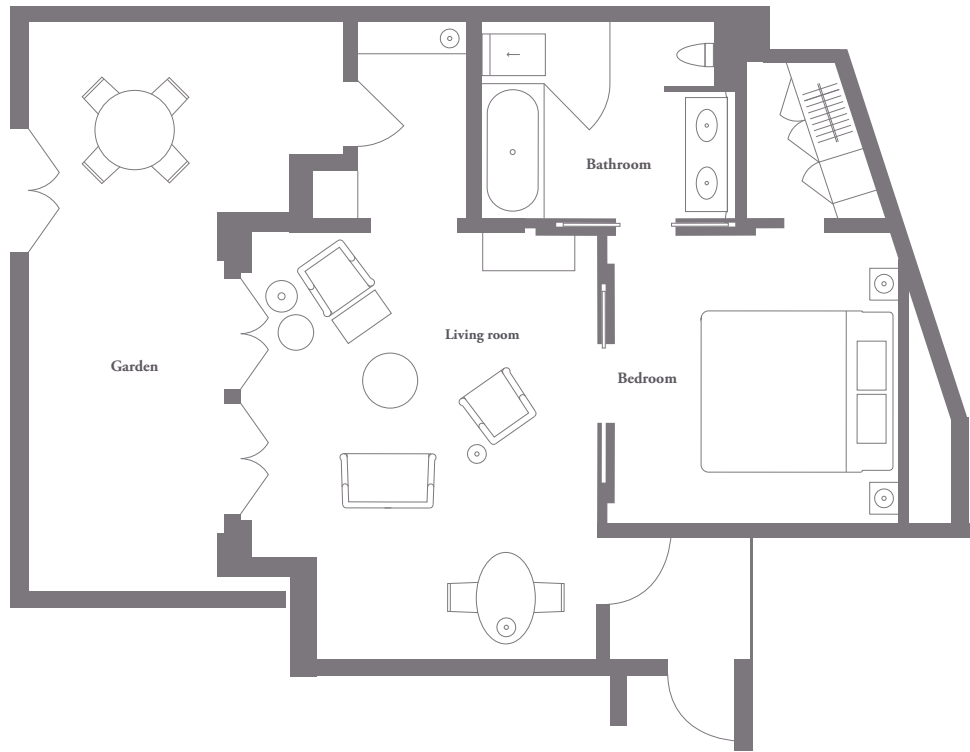
Nestled in 12 acres of stunning landscaped gardens, Hotel Bel-Air is an exclusive oasis where Hollywood's famous faces come to hide. A hidden sanctuary amongst the wooded hills, it's just minutes from Los Angeles' most popular attractions and regarded as one of the most beautiful and romantic hotels in the world.

The hotel features 58 guestrooms and 45 suites, including seven one-of-a-kind signature suites, each beautifully restored by interior designer Alexandra Champalimaud to reflect the grace and glamour of Hollywood's Golden Age.

The restaurant and bar are managed by world-renowned chef Wolfgang Puck, with a menu featuring Mediterranean-inspired Californian cuisine, served in a spectacular garden setting.

We invite you to discover a small selection of our beautiful suites at our secret paradise in the heart of LA, delivering low-key elegance since 1946.





JUNIOR POOL SUITE

Our Junior Pool Suites overlook the swimming pool, surrounded by hanging palms and cascading blooms. Each suite features its own private entrance from the gardens, some with garden patios and wood-burning fireplaces.

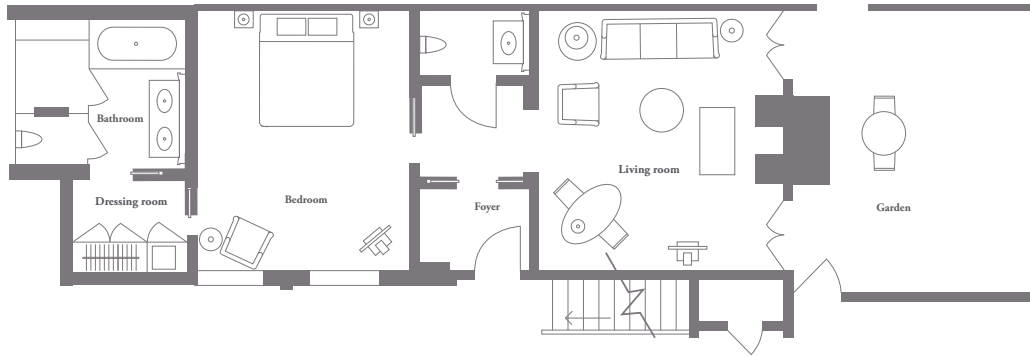
Inspired by the glamour of the Hollywood Golden Age, the suites feature a stylish sitting room and bedroom, and a marble bathroom with a built-in television, rain-head shower, bath and heated limestone floors.

Size: 655ft²/61m²

JUNIOR POOL SUITE







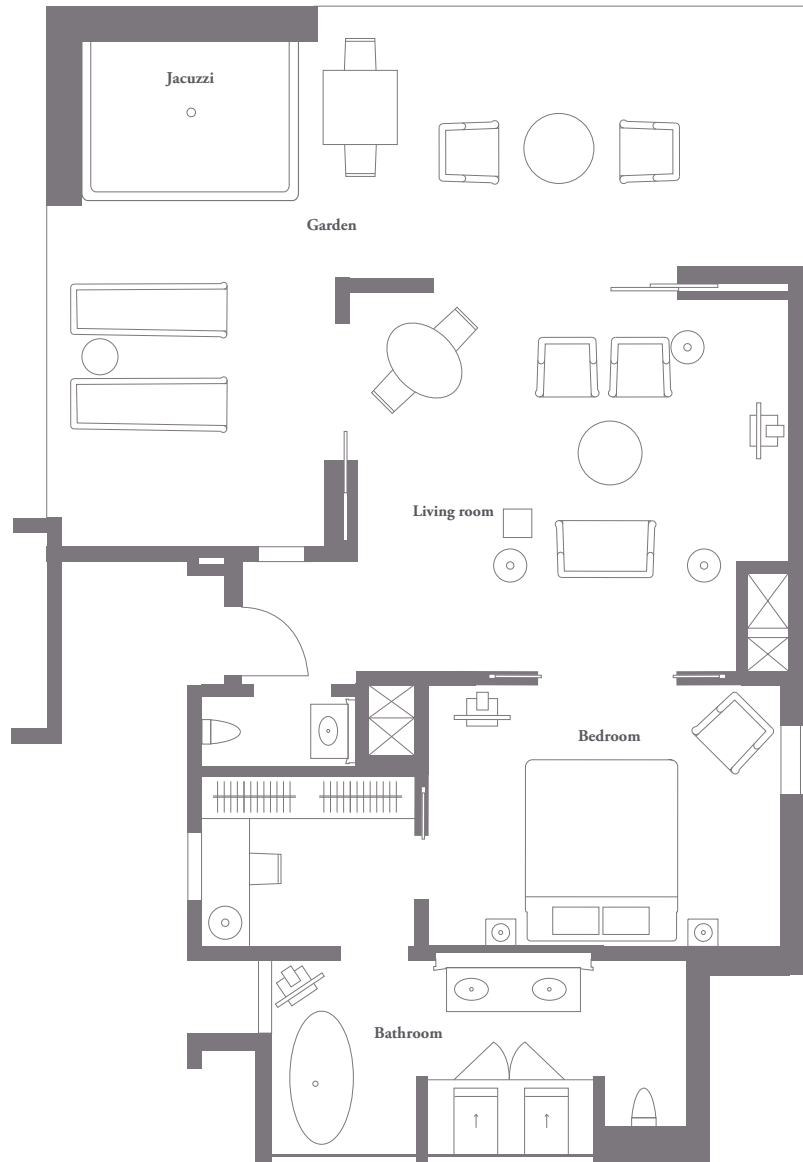
BEL-AIR SUITE WITH PATIO

Designed to create a sense of bringing the outside in, each Bel-Air Suite with Patio is located among the hotel's lush gardens. In each you'll find an elegant living room, bedroom and marble bathroom, along with your own private garden patio.

Size: 690ft²/64m²

BEL-AIR SUITE WITH PATIO





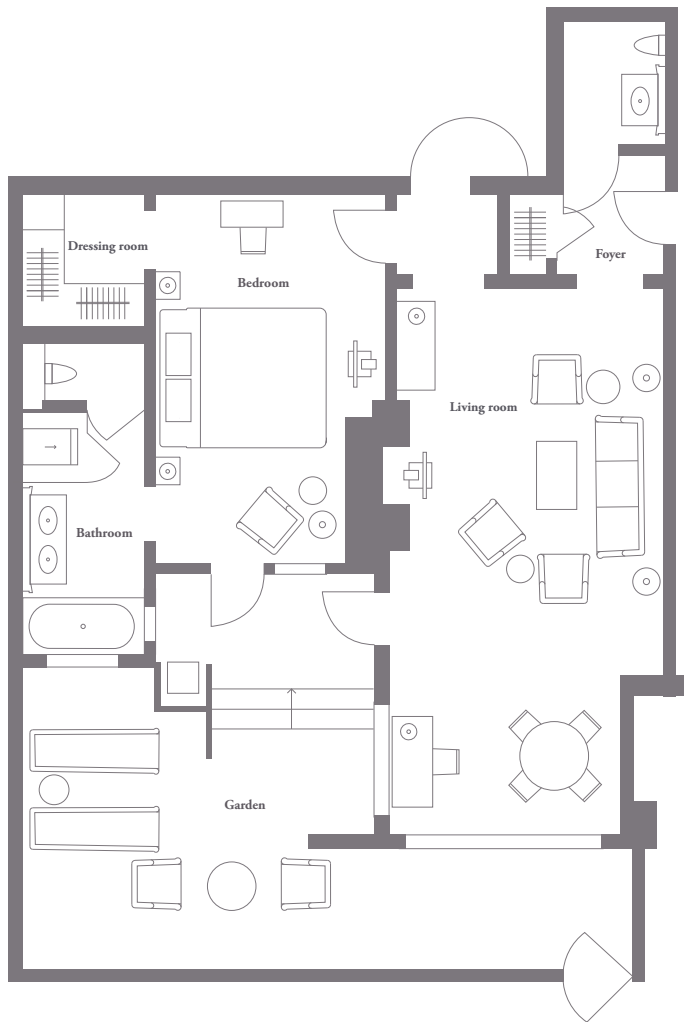
PREMIER CANYON SUITE

The perfect way to experience the Southern California lifestyle. With décor inspired by Hollywood's Golden Age, these lavish suites showcase vintage flair, with retractable walls which open up to reveal stunning views of LA's rolling hills from your own private patio and spa pool. Inside you'll find a spacious living room and bedroom, master bathroom with freestanding spa bath, built-in television and all the features you'd expect from one of the finest five-star hotels in LA.

Size: 600ft²/56m²





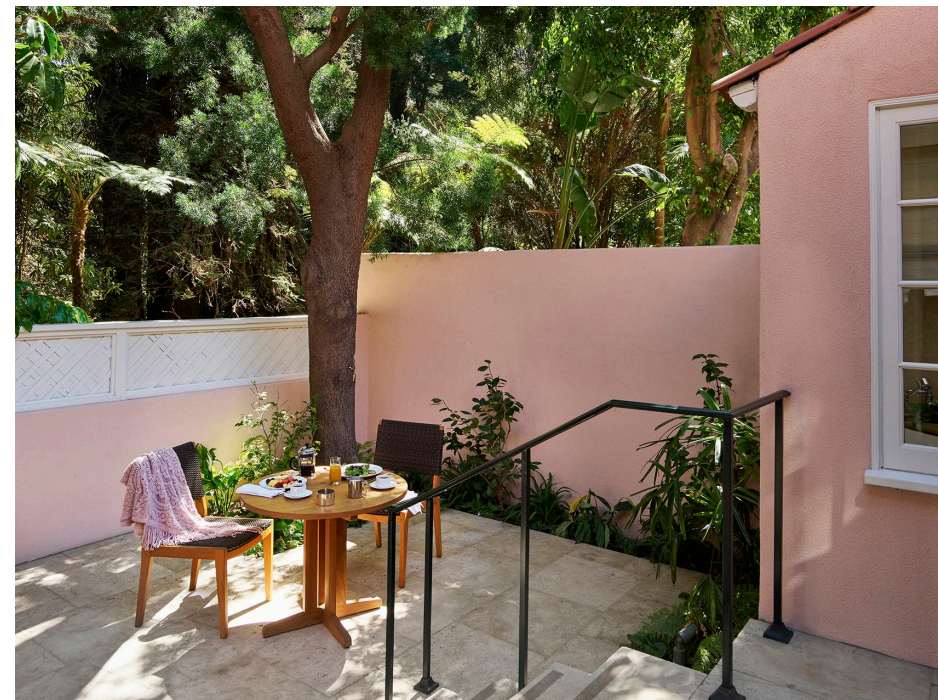


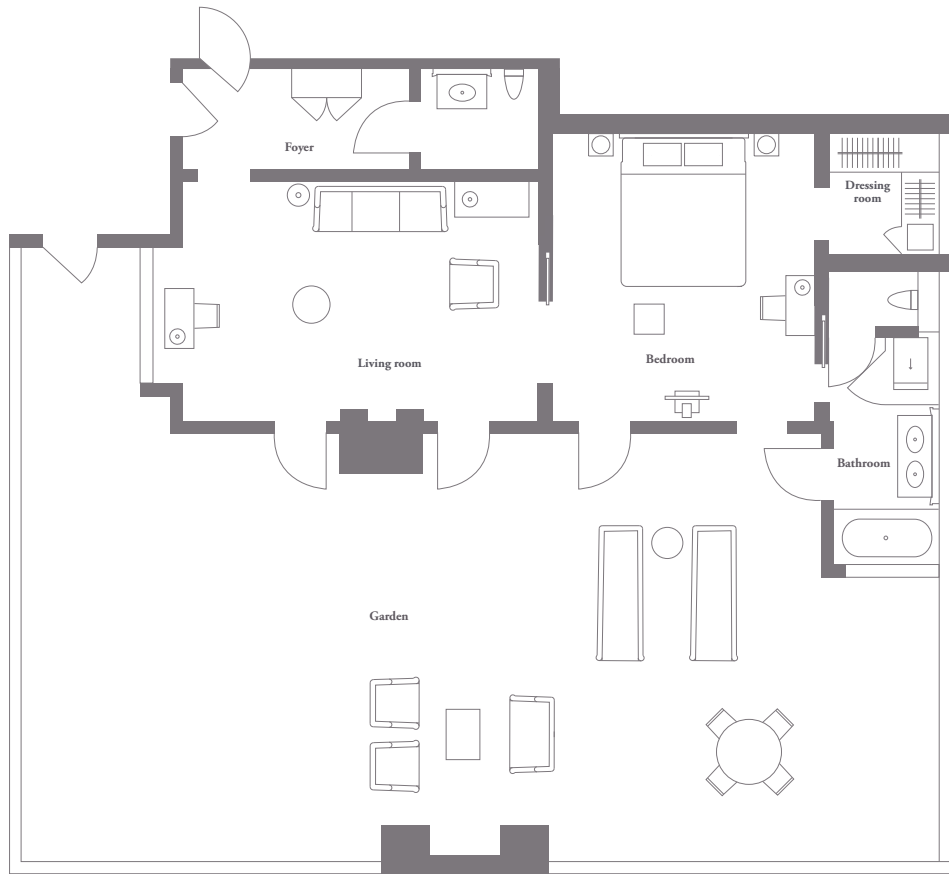
GRAND SUITE

With a spacious layout and sleek modern Spanish interiors, the Grand Suite feels like your own luxury private home. From the elegant living room, you can step out through French doors to discover a spacious garden patio with outdoor gas fireplace and seating area for soaking up the LA sunshine.

Size: 850ft²/79m²

GRAND SUITE





SWAN LAKE SUITE

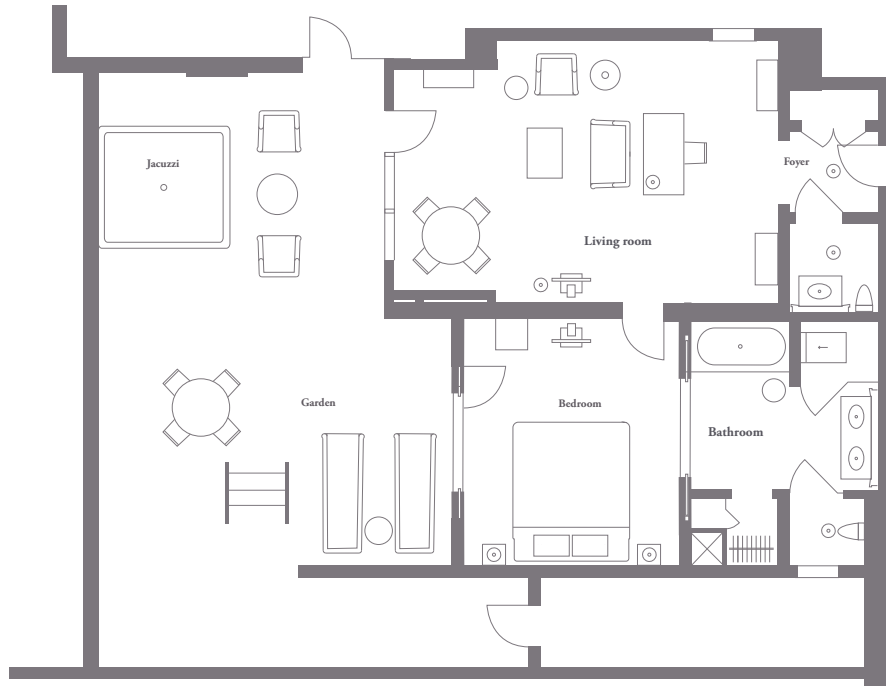
Step beyond the white picket gate and discover one of our most popular signature suites, discreetly located away from the main hotel spaces, adjacent to our picturesque Swan Lake. Inspired by the grace and elegance of our resident swans, the interior feels beautifully light and airy, creating an atmosphere of peace and serenity. It features a private garden patio with Jacuzzi, which can be accessed via French doors from the living room, bedroom and bathroom.

Size: 755ft²/70m²

SWAN LAKE SUITE







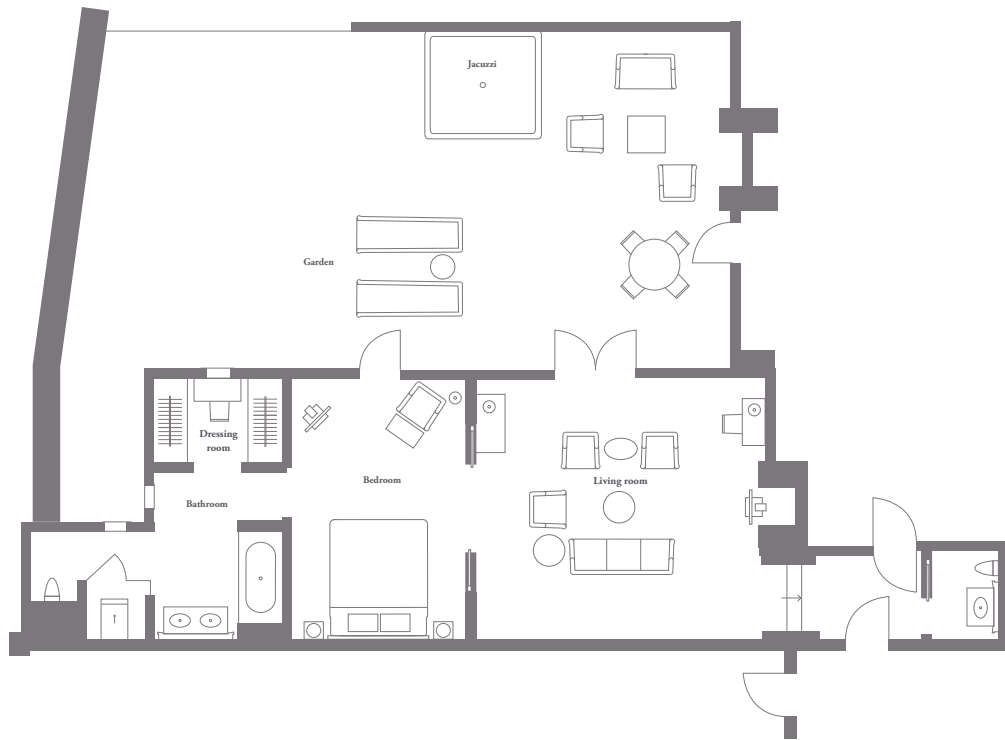
PATIO SUITE

Beautifully unique and truly one-of-a-kind. Our Patio Suite in the lower canyon evokes contemporary simplicity, featuring an elegant living room with French doors leading out onto a spacious garden patio. Dine al fresco, soak up the sunshine or simply relax in your own outdoor Jacuzzi.

Size: 835ft²/78m²

PATIO SUITE





GRACE KELLY SUITE

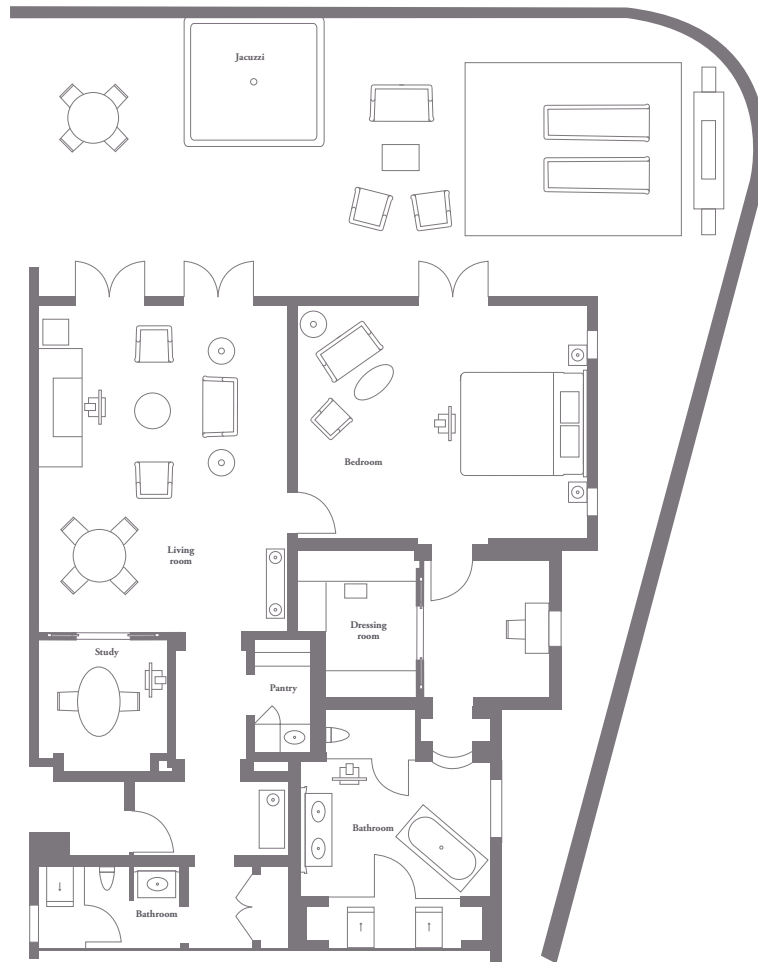
Dedicated to the legendary Hollywood starlet, the Grace Kelly Suite is our own shining star, decorated in a creamy color palette. An elegant living room with vaulted ceiling and floor-to-ceiling windows looks out onto a private patio with Jacuzzi and seating area. Here, a 100-year-old tree reminds you this suite is a piece of our remarkable legacy.

Size: 915ft²/85m²

GRACE KELLY SUITE





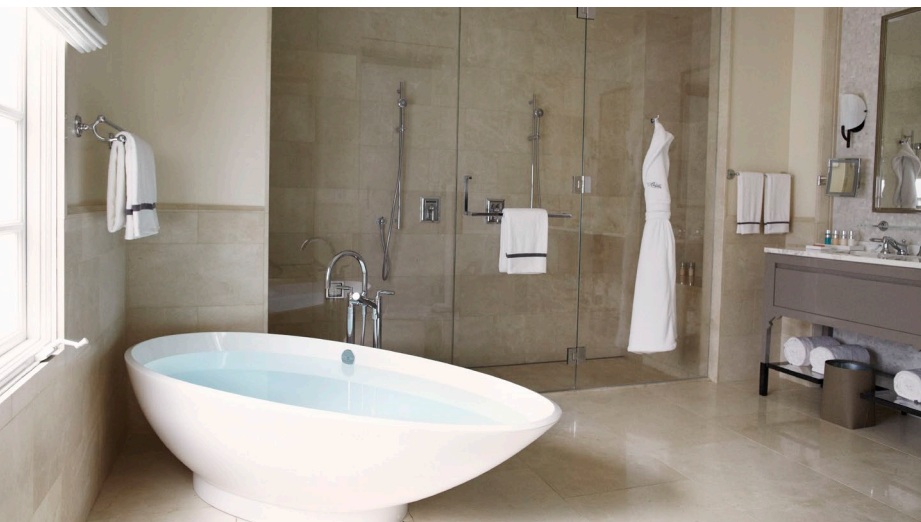


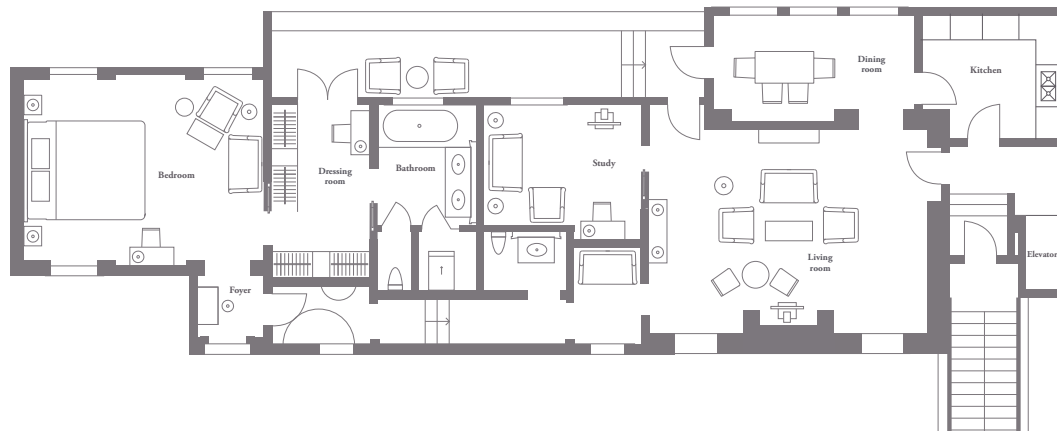
STONE CANYON SUITE

Make the most of the Californian sunshine in this beautiful suite, offering plenty of indoor and outdoor space. It features an elegant living room with a wood-burning fireplace and a beautiful master bedroom, both leading onto a lush garden patio. Outside you'll find a Jacuzzi, gas fireplace and seating and dining areas which are perfect for entertaining.

Size: 1,480ft²/137m²

STONE CANYON SUITE





HERB GARDEN SUITE

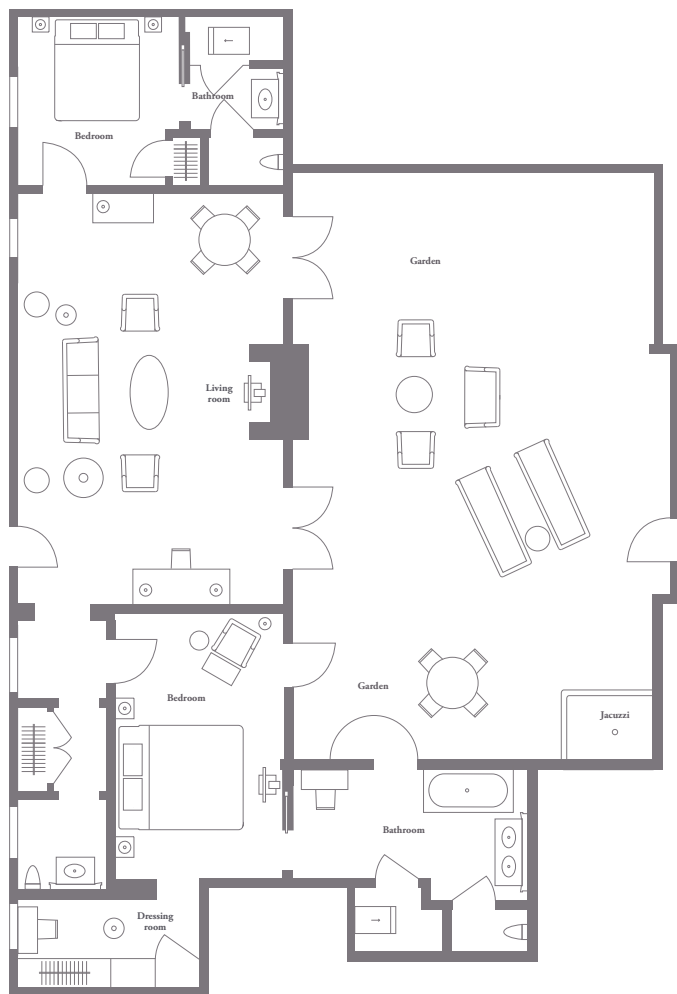
Step out of your own private elevator and discover the beautiful Herb Garden Suite, a sprawling 1,481ft²/137m² space, featuring a spacious living room with fireplace, separate study and French windows overlooking the lush gardens. Perfect for entertaining, you'll find a chef's kitchen with separate entrance and a dining room for up to eight guests.

At the far end of the suite, the master bedroom is a calm retreat, flooded with natural daylight, with French doors leading to your own private terrace.

Size: 1,800ft²/167m²

HERB GARDEN SUITE





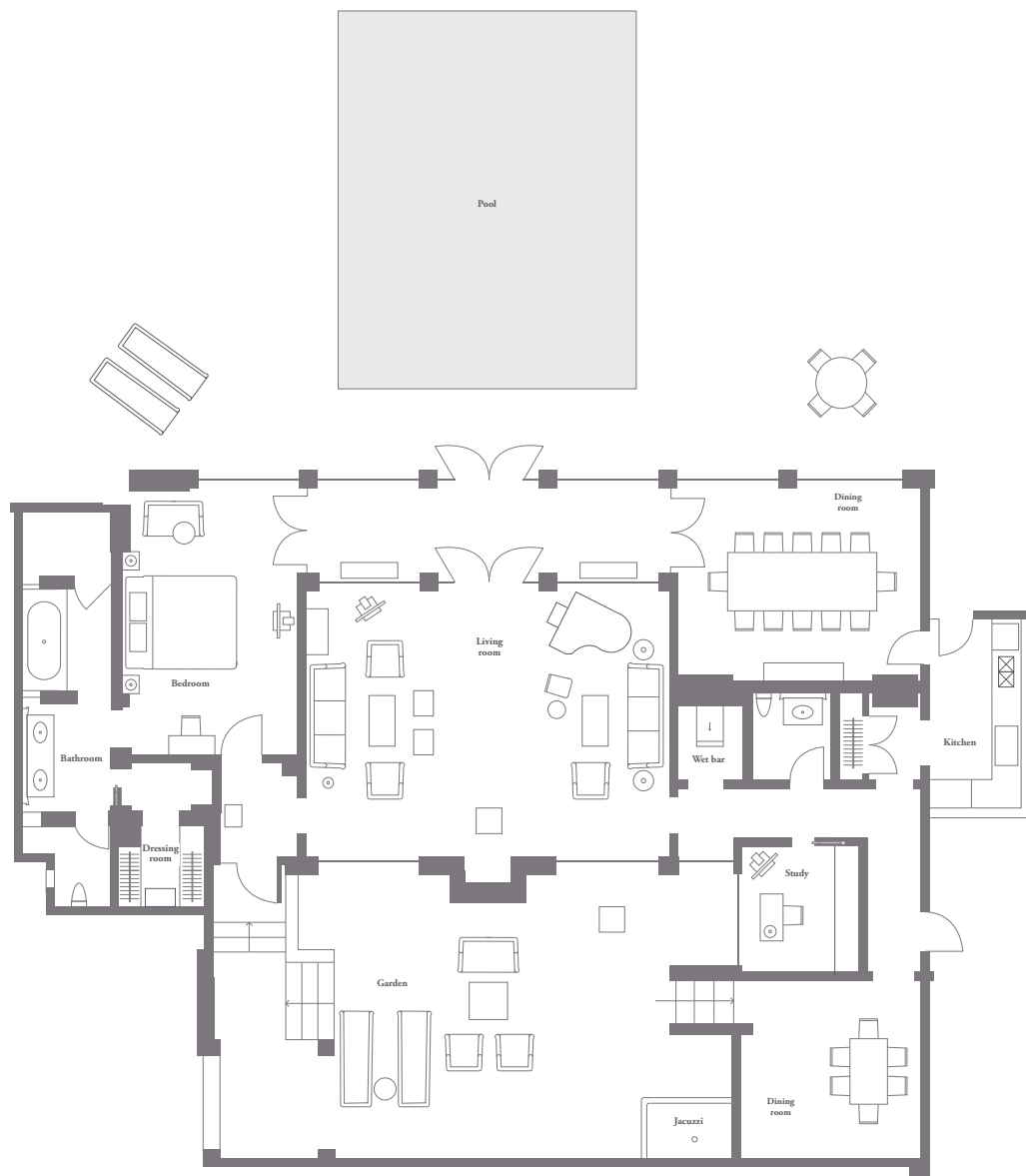
CHALON SUITE

The definitive Bel-Air experience, where you'll feel as though you're stepping back in time to Hollywood's Golden Age. Located in the lower canyon, this signature suite features a beautiful living room with wood-burning fireplace and French doors leading to your own private patio with seating area and Jacuzzi. It features two bedrooms, and both the master bedroom and bathroom offer access to the private patio. The second bedroom makes an ideal room for children or extra guests, with its own en suite bathroom.

Size: 1,335ft²/124m²

CHALON SUITE



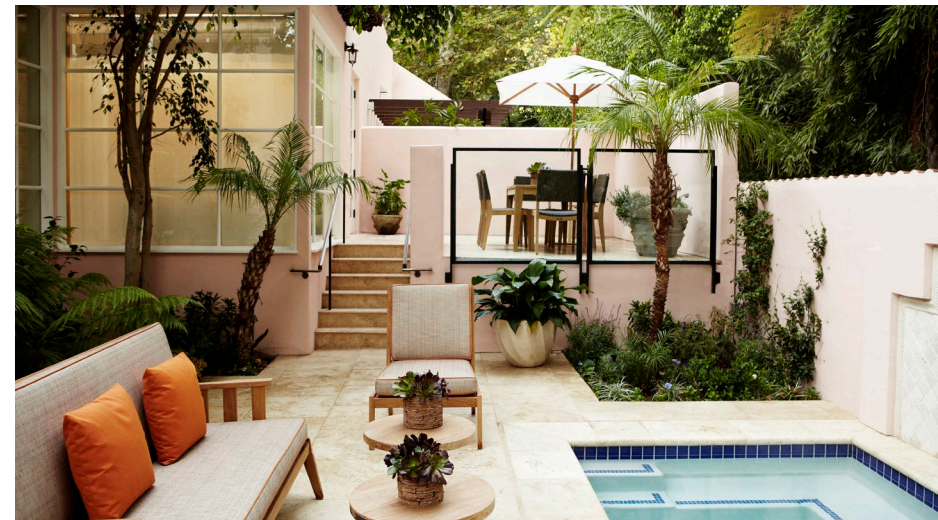


PRESIDENTIAL SUITE

A hidden home of exceptional privacy and supreme luxury within LA's most elegant and exclusive setting. Enter through your own private courtyard to discover a beautifully spacious living room with vaulted ceiling, grand piano and a monolithic fireplace, as well as a study, chef's kitchen and separate employee entrance. Both the bedroom and living room lead out onto a 4,515ft²/419.5m² courtyard with dining area, and the pièce de résistance – a full-sized swimming pool. For complete seclusion, the separate terrace with Jacuzzi is a tranquil spot in which to relax and bask in the LA sunshine.

Size: 2,265ft²/210m²

PRESIDENTIAL SUITE



HOTEL BEL-AIR 701 Stone Canyon Road, Los Angeles, California 90077
+1 310 472 1211 dorchestercollection.com