

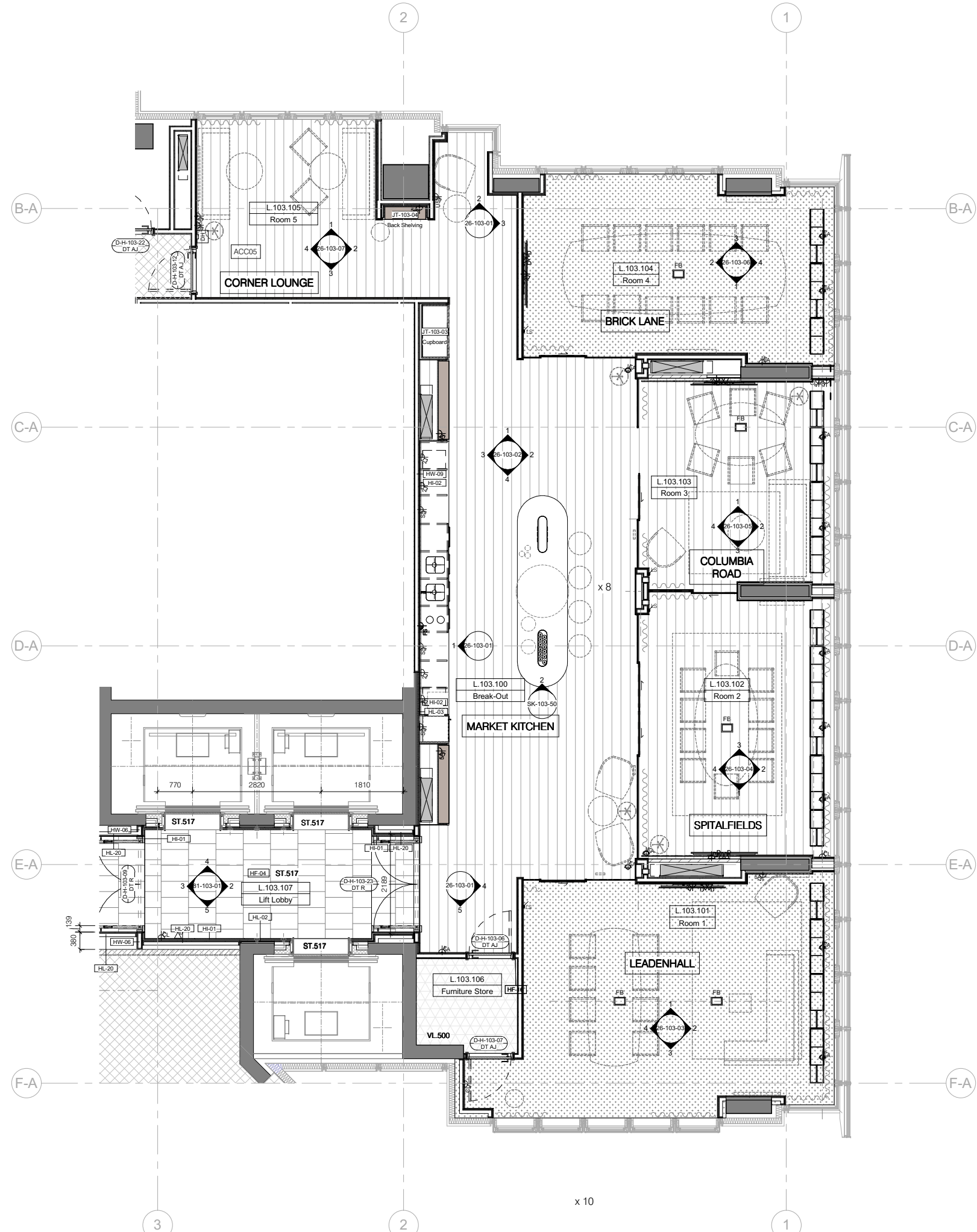
DRAWING INFORMATION

DOCUMENT STATUS:

GENERAL NOTES:

Do not scale from drawings. Check all dimensions and conditions on site. All works to be carried out in accordance with current health and safety including (CDM) regulations. All works to comply with current British standards and regulations, codes of practice and appropriate European standards. All structural work is to be carried out in accordance with the structural engineers details and calculations. All drawings are to be read in conjunction with the relevant specifications.

Scope of all external walls, windows, doors, roofs etc. are by others. If there is any doubt please contact MSRM immediately.



L03 FFE Key Plan

rev	date	description	drawn	checked

dwg no. **16005-**
95-103-02
 job no. **16005**
150 Bishopsgate hotel
FFE Key plan-L03- creative space
 1 : 50 @ A1

