

M E E T I N G S   A N D   S P E C I A L   E V E N T S



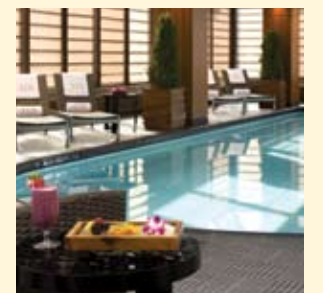
THE PENINSULA  
NEW YORK

PROUD RECIPIENT OF THE PRESTIGIOUS FORBES FIVE STAR AND AAA FIVE-DIAMOND AWARDS, THE PENINSULA NEW YORK'S STUNNING, REFURBISHED FUNCTION ROOMS PROVIDE AN EXCLUSIVE VENUE FOR DISTINGUISHED SOCIAL OR BUSINESS EVENTS.



### THE LEGENDARY DESTINATION

Ideally located on the corner of Fifth Avenue and 55th Street, this magnificently restored 1905 landmark building is just steps away from world-class shopping, museums and the magic of Broadway. Guest amenities include enticing dining options and the award-winning Peninsula Spa with glass-enclosed swimming pool, sun-lit fitness center and wrap-around outdoor sun terrace. Our world-renowned service has made The Peninsula New York a destination for discerning global travelers and locals alike.





INTIMATE. EXCLUSIVE.  
THE IDEAL SETTING AWAITS.

For high-profile events, executive meetings and special celebrations, The Peninsula New York seamlessly blends elegant facilities and expert event planning. Every detail is meticulously tailored to suit the occasion and enhance even the most extraordinary affair. Decorated in modern, stylish elegance, the five completely refurbished function rooms and receiving areas encompass 3,300 sq ft and are intimately scaled with residential-style furnishings and bespoke appointments.





## GRAMERCY

Gramercy's hallmark is its generous windows framed by silk drapery that let in abundant natural daylight and offer commanding views of Fifth Avenue. The largest available function space, Gramercy is ideal for important business conferences, high-profile events and intimate weddings. This room may be divided to hold two separate functions simultaneously and features upholstered walls and double-paned glass for hushed acoustics in addition to state-of-the-art electronics such as an iPod docking station and plasma flat-panel monitors. The Gramercy foyer, decorated with chic appointments, is perfect for registration, elegant coffee breaks or cocktail gatherings.



## SUTTON

The Peninsula's most intimate function room, Sutton offers amazing views of Fifth Avenue and is perfect for private board meetings or for use as a hospitality suite. The built-in media console with white marble top holds state-of-the-art electronics equipment where a flat-screen plasma monitor may be displayed.



## TRIBECA

Situated at the corner of Fifth Avenue and 55th Street, Tribeca features stunning views of Manhattan's most glamorous addresses. Three impressive windows let in natural light and are dressed in silk drapery and sheer shade treatments. This exquisite room is ideal for celebratory events as well as high-powered meetings.



### CHELSEA

Chelsea's private location benefits from a small foyer that may be used as a reception hall or refreshment station. Perfect for confidential board meetings, private luncheons and dinners, Chelsea features gold hand-lacquered wallpaper, light sconces crafted of alabaster and contemporary artwork. Chelsea may be booked individually or combined with Greenwich.



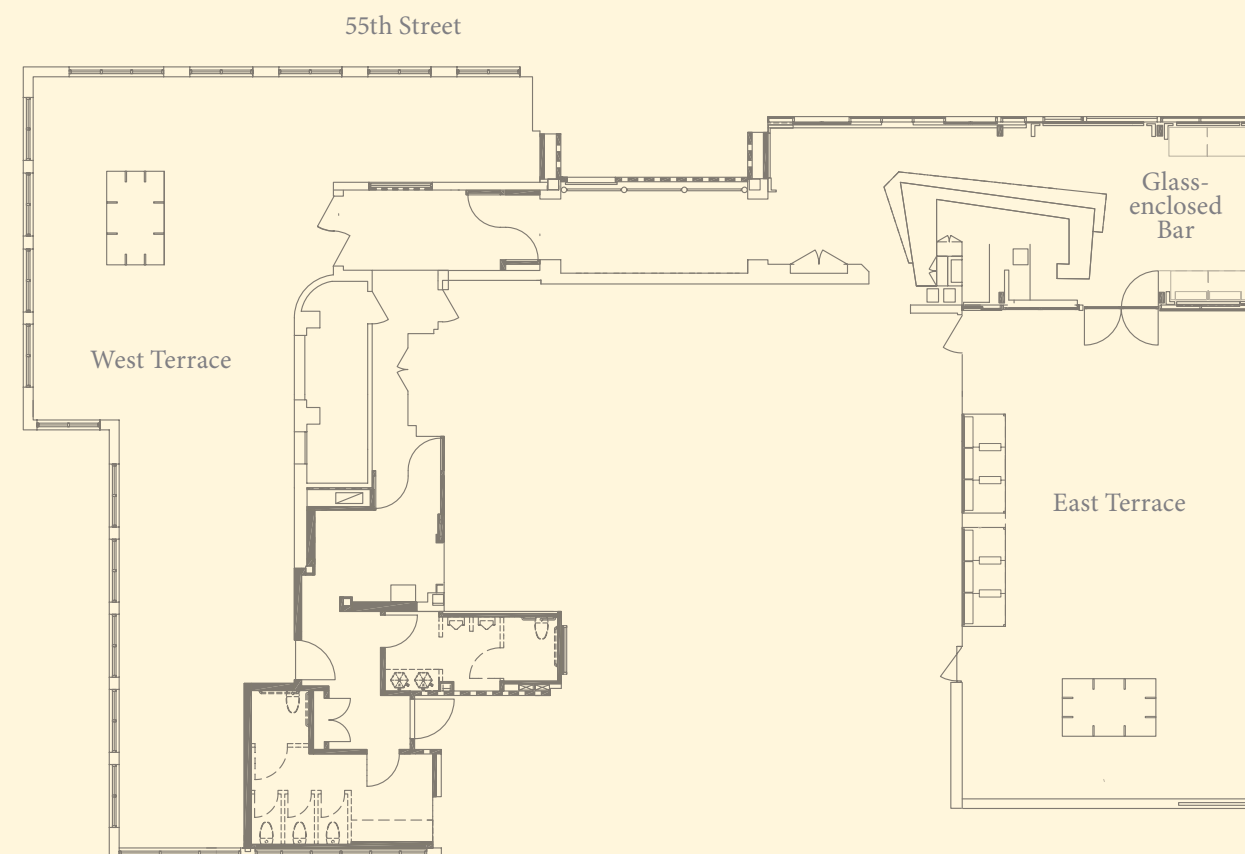
### GREENWICH

Bathed in sunlight by two windows overlooking 55th Street, the residential-like appointments of Greenwich offer a small, tasteful built-in buffet and media console that cleverly hides state-of-the-art equipment. Greenwich conveniently connects to Chelsea or is an exquisite venue on its own.



### SALON DE NING

Located on the rooftop of The Peninsula, Salon de Ning offers glittering skyline views and is one of Manhattan's most unique venues. This seductive setting features an intimate bar with an eclectic art collection and two gorgeous terraces with comfortable seating areas. For a stunning cocktail reception, intimate wedding, brunch or private celebration, the West Terrace of Salon de Ning can be booked as a private event space for up to 125 guests. For the ultimate New York event, the entire rooftop space may be reserved on an exclusive basis for up to 290 guests.



### WEDDINGS

For couples who seek intimacy and exclusivity, The Peninsula New York's grand residential style and unsurpassed location in mid-town Manhattan guarantee a lavish and extraordinary occasion. Impressive catering options abound, from traditional to contemporary dishes, and from buffet to show-stopping cocktail canapés. From the moment your guests arrive they will enjoy the brilliant perfection found only at The Peninsula.

## HOTEL FACILITIES AND SERVICES

### ACCOMMODATION

185 spacious and luxurious rooms and 54 suites

Features include:

- Deluxe marble bathroom with television
- Flat-screen televisions with cable/satellite channels/in-room movies
- CD and DVD players in all guestrooms
- Executive work desk
- Complimentary wired and wireless broadband Internet access
- Private in-room multi-functional fax machine
- In-room safe
- Individual thermostat control
- Rooms equipped for disabled accessibility
- Non-smoking rooms

### WELLNESS

#### The Peninsula Spa

An urban oasis providing a sanctuary to revitalize mind, body and spirit. Discover therapies that blend Asian, Ayurvedic and European philosophies for a unique, holistic experience. Enjoy The Spa's luxurious amenities including heat experiences with a steam room, sauna, ice fountain and "experience" shower; men's and women's private relaxation lounges and an Asian Tea Lounge. The Spa features 12 treatment rooms, including a Private Spa Suite for two.

#### The Swimming Pool

The serene, glass-enclosed pool and outdoor sun terrace feature stunning views of Fifth Avenue and Central Park.

#### The Fitness Center

State-of-the-art equipment and a sun-lit movement studio combine to provide the ultimate workout. Personal trainers are also available.

### DINING

#### Clement

Clement restaurant seamlessly blends an elegantly modern aesthetic and Contemporary American cuisine focusing on locally sourced ingredients from the Northeast.

#### Bar at Clement

The Bar offers a bewitching menu of cocktails, a selection of wines and Champagnes by the glass, and small plates echoing the Clement menu.

#### Gotham Lounge

A sophisticated setting for the legendary Peninsula Afternoon Tea, evening cocktails and light snacks.

#### Salon de Ning

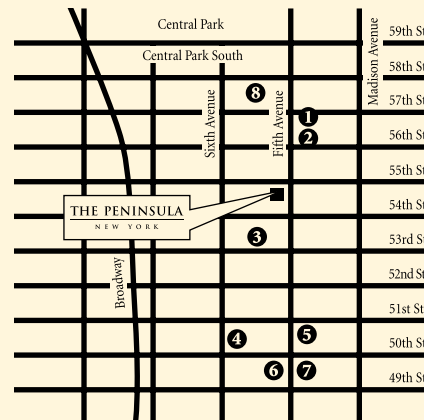
A chic rooftop bar featuring two outdoor terraces complemented by an intimate interior bar that provides dramatic views of the Manhattan skyline.

### THE PENINSULA ACADEMY

A unique collection of heritage, culinary and lifestyle activities created to give guests a taste of the local culture. Younger guests are not forgotten either with the Kid's Academy program.

### LOCATION

Located in the heart of mid-town Manhattan on the southwest corner of Fifth Avenue and 55th Street in the very center of the city's most prestigious business, shopping and entertainment district, The Peninsula New York is just 45 minutes by car from JFK International Airport, 25 minutes by car from La Guardia Airport and 45 minutes by car from Newark International Airport.



1. Tiffany & Co.
2. Trump Tower
3. Museum of Modern Art
4. Radio City Music Hall
5. St. Patrick's Cathedral
6. Rockefeller Center
7. Saks Fifth Avenue
8. Bergdorf Goodman

## FUNCTION ROOMS



|           |                 | Dimensions |            | Size    |        | Ceiling Height |     | Capacities          |         |           |         |           |         |
|-----------|-----------------|------------|------------|---------|--------|----------------|-----|---------------------|---------|-----------|---------|-----------|---------|
|           |                 | W x L (ft) | W x L (m)  | (sq ft) | (sq m) | (ft)           | (m) | Cocktail/ Reception | Theatre | Classroom | U-shape | Boardroom | Banquet |
| Gramercy  | North and South | 29 x 56    | 8.8 x 17.1 | 1624    | 151    | 10.6           | 3.2 | 180                 | 100     | 70        | 25      | 25        | 130     |
|           | North           | 29 x 34    | 8.8 x 10.4 | 986     | 92     | 10.6           | 3.2 | 60                  | 60      | 40        | 24      | 24        | 80      |
|           | South           | 29 x 22    | 8.8 x 6.7  | 638     | 59     | 10.6           | 3.2 | 70                  | 40      | 30        | 24      | 24        | 50      |
|           | Foyer           | 14 x 48    | 4.3 x 14.6 | 672     | 62.8   | 10.6           | 3.2 | 65                  | —       | —         | —       | —         | —       |
| Sutton    |                 | 19 x 19    | 5.8 x 5.8  | 361     | 34     | 10.6           | 3.2 | 25                  | 20      | 15        | 12      | 15        | 20      |
| Tribeca   |                 | 18 x 26    | 5.5 x 7.9  | 468     | 43     | 10.6           | 3.2 | 35                  | 40      | 24        | 15      | 20        | 36      |
| Chelsea   |                 | 18 x 24    | 5.5 x 7.3  | 432     | 40     | 10.6           | 3.2 | 40                  | 40      | 24        | 16      | 20        | 40      |
| Greenwich |                 | 18 x 22    | 5.5 x 6.7  | 396     | 37     | 10.6           | 3.2 | 30                  | 30      | 20        | 14      | 16        | 30      |



700 Fifth Avenue at 55th Street, New York, NY 10019, USA  
Tel: +1 (212) 956 2888 Fax: +1 (212) 903 3949 Toll-Free: (1-800) 262 9467 (from USA)  
E-mail: [pny@peninsula.com](mailto:pny@peninsula.com) Website: [peninsula.com](http://peninsula.com)

*Hong Kong • Shanghai • Beijing • Tokyo • New York • Chicago • Beverly Hills • Paris • Bangkok • Manila*