



COVID - 19 FRANCE PROTOCOL

TRAVEL SAFE by NACARA DMC FRANCE

THE SECURITY MEASURES REQUIRED BY THE FRENCH GOUVERNEMENT

1



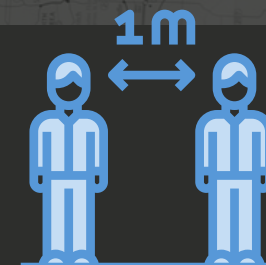
In the absence of sanitary facilities close to you, please make sure to sanitize your hands regularly thanks to hydroalcoholic gel.

2



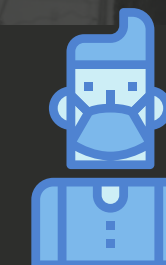
Coughing or sneezing into his elbow or handkerchief.

3



Maintain a distance of at least one metre from other people.

4



Wearing masks is mandatory in transportation & enclosed areas (shops, museums, restaurants, etc.) is mandatory.

AT THE AIRPORT



"CONTACTLESS" AUTOMATED HYDROALCOHOLIC GELS DISPENSERS

As complimentary advice to regular handwash, they have set up contactless hydroalcoholic gel dispensers all along your journey at the airport (while using lifts, at check-in, security checks, border control or boarding lounges).

FLOOR SIGNAGE TO HELP YOU COMPLY WITH SOCIAL DISTANCING

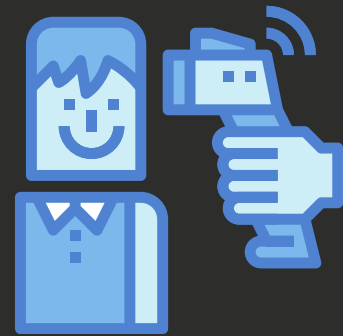
To avoid close contacts with others, they have set up floor signage to help you comply with the 1 meter distance to keep with others, in queuing areas as well as when accomplishing check-in, security checks or boarding.

CLEANING AND DISINFECTION OF THE TERMINALS SEVERAL TIMES A DAY

They combine hand cleaning on all objects and hard surfaces, with automated disinfection procedures spraying approved disinfectant to reach even the most difficult and inaccessible corners. Cleaning is carried out with an approved virucidal disinfectant, complying with the Covid19 efficiency norm EN14476.

TEMPERATURE CHECKS AT ARRIVALS

For your protection, Paris Aéroport is setting up temperature screenings with thermal cameras at your arrival in Paris, in the luggage delivery area. If your temperature is above 38°C, you will be invited to proceed to a second temperature check with a contactless thermometer.



IF YOUR TEMPERATURE IS CONFIRMED ABOVE THE INDICATED LEVEL, THEY WILL SUGGEST YOU A MEDICAL VISIT WITH A DOCTOR WHO WILL, IF REQUIRED, OFFER YOU TO BE TESTED WITH A COVID-19 PCR TEST.

PROCEDURES TO AVOID PHYSICAL CONTACTS

IN ORDER TO AVOID PHYSICAL CONTACTS, THEY INVITE ALL OUR PASSENGERS TO PROCEED TO ONLINE CHECK-IN WHENEVER POSSIBLE. AT THE CHECK-IN OR BAG-DROP DESK, THEY HAVE SET UP PLEXIGLASS PROTECTIONS TO PROTECT YOU AND THEIR COLLABORATORS. THEY STRONGLY ENCOURAGE PASSENGERS TO USE AUTOMATED BAG DROP.

TRANSPORTATION



WEAR A MASK AT ALL TIMES

Wearing a mask is compulsory from the moment you enter the transportation area.

If you do not have a mask, you can find masks in open pharmacies, automatic distributors or shops in the malls

The driver will wear a mask and he is not allowed to open the door or help with luggage.



NUMBER OF GUESTS IS REDUCED

Private car: only one passenger is allowed on board, except in vans (max 3 passengers) and sedans equipped with a partition wall (max 2 passengers).

Coaches: limited number of seats available to respect social distancing.



CLEANING AND DISINFECTION OF VEHICLES

Avoid physical contact and keep a distance of one meter when exchanging.
Constantly ventilate the passenger compartment.

Disinfect the passengers contact areas between each race and the entire vehicle once a day.

AT THE RESTAURANT



MASKS

Masks are mandatory in all enclosed areas

AT THE TABLE

1 linear meter between 2 tables of constituted guests (or via screens between tables when this distance is not possible).

BARTENDER / COUNTER SERVICE

At the counter, a protective visor is worn by the barman,

GROUPS

Groups reservations are allowed for 10 guests maximum

BUFFET

Buffet are now served by a Chef or ready in plates with the same menu as the buffet often.

AT THE MUSEUM



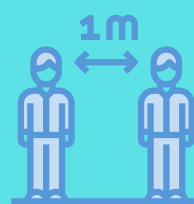
RESERVATIONS ARE MANDATORY

Within the limit of the seats still available and in case of low attendance, it is possible to buy a ticket on the spot on the same day. However, only advance booking guarantees admission. Please note that due to the health crisis, only contactless credit cards are accepted.



SANITARY MEASURES AND VISITING INSTRUCTIONS

Wearing a mask is mandatory for museum staff and for visitors aged 11 and over. Visitors must bring their own mask (not provided by the museum). Access to the museum will be after passing their hands under a hydro-alcoholic gel dispenser.



SOCIAL DISTANCING

As in any space open to the public, barrier gestures and physical distance must be respected. Independent tour guides can accompany groups of up to 25 people. They must be equipped with helmets and microphones to respect physical distance.

Any questions?

DO NOT HESITATE TO CONTACT US



E-MAIL

contact@nacara-dm.com