

# ST MARTINS LANE

LONDON

Event Spaces

sbe



## STUDIOS 1&2

### AREA

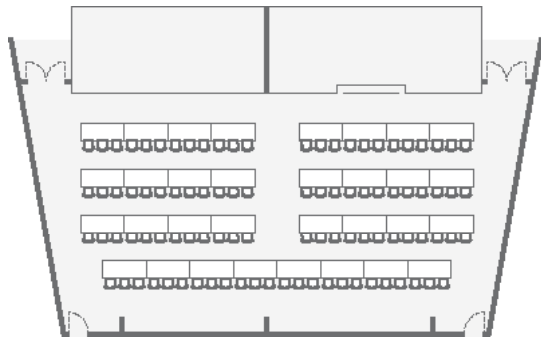
126 square metres

1,357 square feet

### CEILING HEIGHT

2.79 metres

9 feet 2 inches



### LAYOUT

BANQUET ..... 120 PEOPLE

BOARDROOM ..... 47 PEOPLE

CABARET ..... 84 PEOPLE

CLASSROOM ..... 72 PEOPLE

RECEPTION ..... 200 PEOPLE

THEATRE ..... 150 PEOPLE

U-SHAPE ..... 46 PEOPLE

### ROOM NOTES

The Studios at St Martins Lane London are the largest of our spaces, a blank canvas allowing you to create your own style within the room. This gorgeous light and airy room is flooded with natural daylight due to our floor-to-ceiling windows and two inbuilt LCD screens, making it an ideal space for a variety of events, such as product launches, after parties, cocktail receptions for up to 200 and private meetings for up to 120 theatre style. Mirror details evoke a streamlined elegance, offering an undercurrent of luxury to this versatile space. The space also boasts access to an outdoor terrace, which can be used for breakouts. Alternatively, we offer full black-out capabilities allowing you to create your own unique Studio 1 & 2 experience.



## STUDIO 1

### AREA

63 square metres

680 square feet

### CEILING HEIGHT

2.79 metres

9 feet 2 inches

### LAYOUT

BANQUET ..... 50 PEOPLE

BOARDROOM ..... 26 PEOPLE

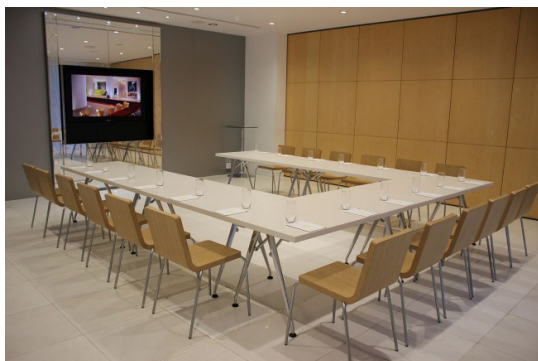
CABARET ..... 40 PEOPLE

CLASSROOM ..... 36 PEOPLE

RECEPTION ..... 90 PEOPLE

THEATRE ..... 60 PEOPLE

U-SHAPE ..... 26 PEOPLE



### ROOM NOTES

Our Studios (1 & 2) are interconnected so guests can easily network throughout the area. Studios can be hired independently so you and your guests can spread across a bright and spacious area with flexible layout to suit the occasion.



## STUDIO 2

### AREA

61 square metres

657 square feet

### CEILING HEIGHT

2.79 metres

9 feet 6 inches

### LAYOUT

BANQUET ..... 50 PEOPLE

BOARDROOM ..... 26 PEOPLE

CABARET ..... 40 PEOPLE

CLASSROOM ..... 36 PEOPLE

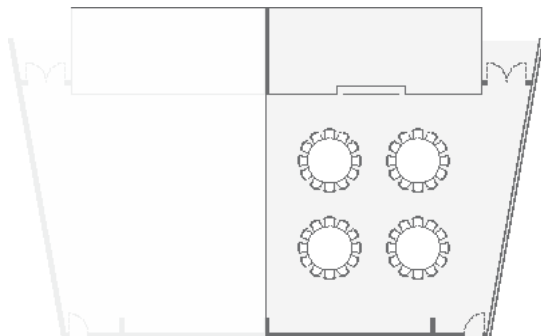
RECEPTION ..... 90 PEOPLE

THEATRE ..... 60 PEOPLE

U-SHAPE ..... 26 PEOPLE

### ROOM NOTES

Opening onto a private terrace, this tranquil space makes it easy to forget you are minutes away from the bustling theatre district. Studio 2 is bright and airy and ideal for a board meeting, training, group presentation or private dinner.







## BACKROOM

### AREA

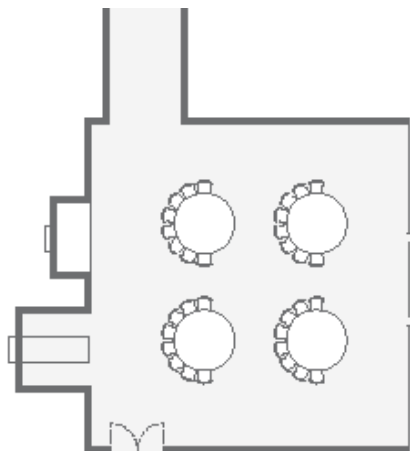
55 square metres

596 square feet

### CEILING HEIGHT

2.91 metres

9 feet 5 inches



### LAYOUT

BANQUET ..... 40 PEOPLE

BOARDROOM ..... 24 PEOPLE

CABARET ..... 40 PEOPLE

CLASSROOM ..... 28 PEOPLE

RECEPTION ..... 40 PEOPLE

THEATRE ..... 40 PEOPLE

U-SHAPE ..... 26 PEOPLE

### ROOM NOTES

Available for receptions, weddings and dinners for up to 40, Backroom at St Martins Lane London is a beautifully serene event space, with walls lined in seamless white marble, a statement chandelier and featuring a zen-like wall of bubbling water. The space is also ideal for presentations and product launches for up to 40 guests in theatre style. With catering by The Restaurant and state-of-the-art audio-visual equipment, your guests will experience the very best that St Martins Lane has to offer.



## BOARDROOM

### AREA

44 square metres

472 square feet

### CEILING HEIGHT

2.4 metres

7 feet 9 inches

### LAYOUT

BANQUET ..... 24 PEOPLE

BOARDROOM ..... 20 PEOPLE

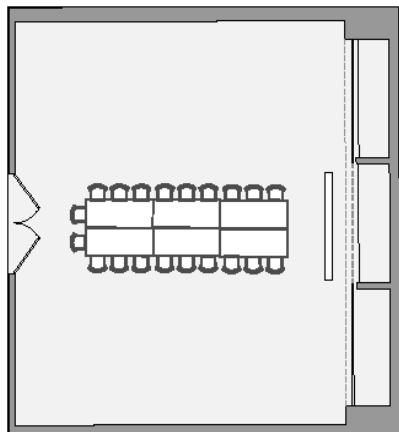
CABARET ..... 16 PEOPLE

CLASSROOM ..... 12 PEOPLE

RECEPTION ..... 30 PEOPLE

THEATRE ..... 32 PEOPLE

U-SHAPE ..... 16 PEOPLE



### ROOM NOTES

Whatever type of event you are looking to host, we have the means to accommodate. Our cosy and sleek Boardroom is the perfect space for training, board meetings and workshops. Fully equipped with plasma screen and Lavazza coffee machine, our fridges can be filled with your favourite items from our Boardroom menu upon request. Wifi, stationery and Alessi products are included in the space.



## SPACE ON ONE

### AREA

59 square metres

638 square feet

### CEILING HEIGHT

3.31 metres

10 feet 9 inches

### LAYOUT

BANQUET ..... 40 PEOPLE

BOARDROOM ..... 28 PEOPLE

CABARET ..... 40 PEOPLE

CLASSROOM ..... 28 PEOPLE

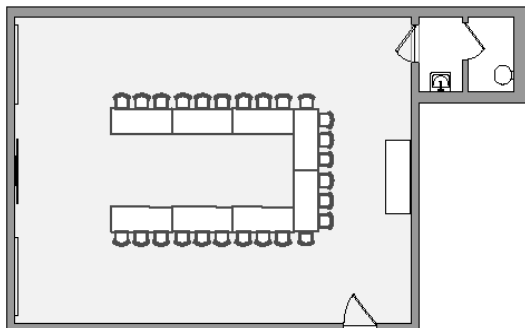
RECEPTION ..... 60 PEOPLE

THEATRE ..... 40 PEOPLE

U-SHAPE ..... 26 PEOPLE

### ROOM NOTES

This open plan space is an ideal location for events such as team away days, board meetings, breakout space and product launches. Located on the first floor, this private room is complete with a boardroom table as well as comfy seating. With two floor-to-ceiling large playful mirrors, the space is given depth and a flash of colour. Space on One also features a private washroom.





## THE RESTAURANT

### AREA

418 square metres

4,502 square feet

### CEILING HEIGHT

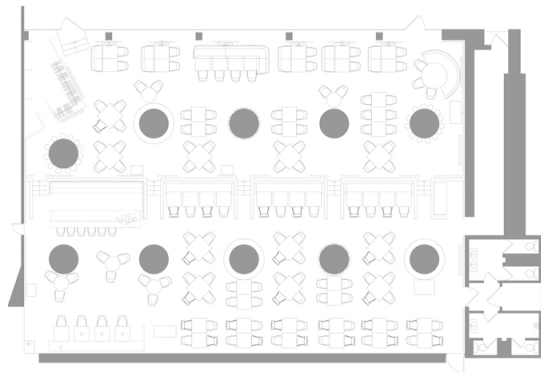
3.5 metres

11 feet 4 inches

### LAYOUT

BANQUET ..... 220 PEOPLE

RECEPTION ..... 400 PEOPLE



### ROOM NOTES

Available for private events for up to 400 guests. Found just a couple of steps away from the lobby, The Restaurant boasts chic ambience, intimately lit with high ceilings and a playlist to match. The space can be adapted for exclusive hire events, removing the furniture to suit multiple layouts. Fresh ingredients, handcrafted cocktails, a specialist wine list, and eye catching interiors make for an unforgettable night.





## THE DEN

### AREA

55 square metres

596 square feet

### CEILING HEIGHT

3.49 metres

11 feet 4 inches

### LAYOUT

BANQUET ..... 40 PEOPLE

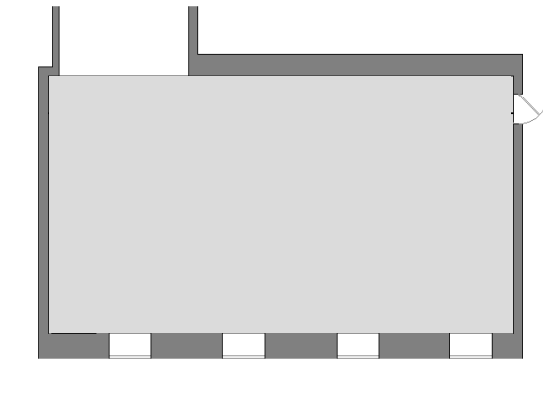
BOARDROOM ..... 25 PEOPLE

CABARET ..... 32 PEOPLE

OCCASIONAL ..... 30 PEOPLE

RECEPTION ..... 60 PEOPLE

THEATRE ..... 40 PEOPLE



### ROOM NOTES

Welcome to The Den, a quintessentially British, oak-panelled snug at St Martins Lane London. The Den is tucked away off the lobby with grand sofa seating as well as intimate tables for two set in a warm and sophisticated décor. The space is perfect for afternoon tea and refreshing drinks at any time (including our bespoke Gin & Tonic menu), as well as informal boardroom meetings for up to 20, receptions for up to 60, and private dinners for up to 30. With tongue-in-cheek British flair, the award winning art on the walls animates the space with larger-than-life portraits and visual puns - a playful celebration of British eccentricity.



## BLIND SPOT

### AREA

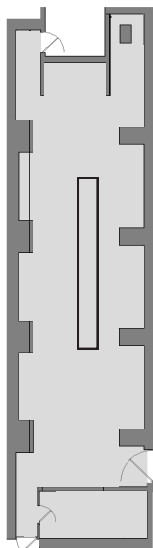
137 square metres

1,474 square feet

### CEILING HEIGHT

2.31 metres

7 feet 7 inches



### LAYOUT

BANQUET ..... 60 PEOPLE

BOARDROOM ..... 30 PEOPLE

CABARET ..... 48 PEOPLE

OCCASIONAL ..... 80 PEOPLE

RECEPTION ..... 120 PEOPLE

THEATRE ..... 60 PEOPLE

### ROOM NOTES

Set behind the façade of a boutique tea counter and a golden hand to welcome you, Blind Spot is a unique space for private events, offering guests bespoke and signature cocktails bursting with flavours influenced by the British Empire and its ancient tea trade. The room is ideal for receptions and parties for up to 120 guests. Offering modern British elegance, Blind Spot is perfectly shadowed by day and illuminated by the energy of the city at night.



## BASEMENT VENUE

### AREA

93 square metres

1,006 square feet

### CEILING HEIGHT

2.6 metres

8 feet 6 inches

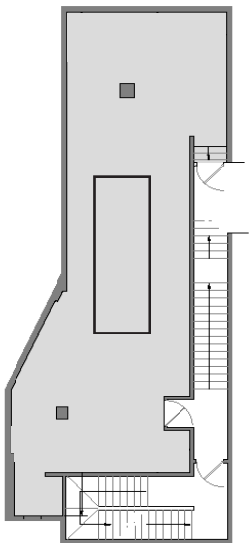
### LAYOUT

BANQUET ..... 14 PEOPLE

BOARDROOM ..... 14 PEOPLE

RECEPTION ..... 100 PEOPLE

THEATRE ..... 40 PEOPLE



### ROOM NOTES

Basement Venue is a destination sensation and is available for private hire for up to 100 guests, or for up to 175 guests if hired with The Den and The Den Terrace. With its own private entrance, a built-in screen and projector, 60" LED screen, WIFI, and DJ equipment, this space is the perfect place for private celebrations, product launches and corporate parties. The space is available until 2am with an entertainment license until 11pm, and piped music thereafter.



## APARTMENT

### AREA

99 square metres

1068 square feet

### CEILING HEIGHT

2.50 metres

8 feet 2 inches

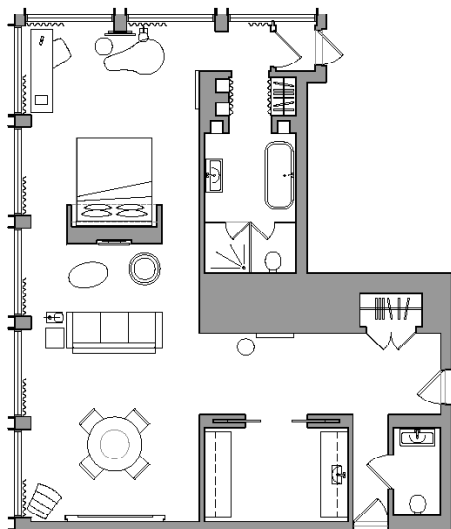
### LAYOUT

BANQUET ..... 12 PEOPLE

BOARDROOM ..... 12 PEOPLE

OCCASIONAL ..... 10 PEOPLE

RECEPTION ..... 20 PEOPLE



### ROOM NOTES

One of the most sought-after accommodations at St Martins Lane London, the Apartment is a spacious and sumptuously appointed world unto itself, where your every need is met in style. An exciting and exuberant space, offering a personal and interactive experience that lifts the spirits and stimulates the senses. An open, loft-like layout includes custom designed furnishings, separate service kitchen, dining area, wide-screen TV and a stunning view of London. The Apartment can accommodate receptions for up to 20 guests, and meetings for up to 12 guests.





## PENTHOUSE

### AREA

103 square metres

1105 square feet

### CEILING HEIGHT

2.50 metres

8 feet 2 inches

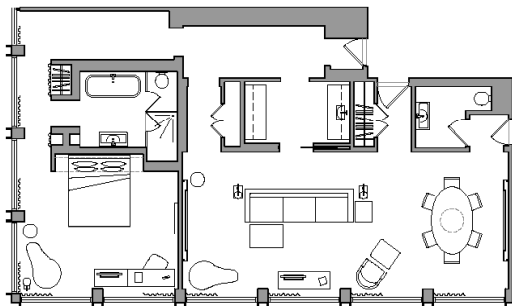
### LAYOUT

BANQUET ..... 12 PEOPLE

BOARDROOM ..... 12 PEOPLE

OCCASIONAL ..... 10 PEOPLE

RECEPTION ..... 20 PEOPLE



### ROOM NOTES

The Penthouse at St Martins Lane London takes events to new heights. This exuberant space, offers an interactive experience that lifts the spirits and stimulates the senses. A one-of-a-kind light installation offers a full spectrum of vibrant colour to reflect every mood. The open layout features both custom-designed furnishings and classics such as Eames chairs. Includes an area for up to 20, separate service kitchen, sitting room, wide-screen TV and sumptuous bathroom. With a stunning view of London, the Penthouse is a sublime sanctuary in the centre of London's Theatre district.

# AV SPECIFICATIONS

## STUDIO 1 & 2

- 65" Sony Bravia screen
- Creston Saros speakers
- 1080p/60 projector
- Discreetly hidden into the ceiling with the assistance of a mirrored projector mount
- 1x configurable projection screen
- VGA and HDMI inputs into the system
- One front, one rear as well as a wireless presentation system (Clickshare) in order to stream slide shows and presentations
- 2x microphones (1x handheld - 1x lapels)
- Three-Phase commando socket
- Configurable coloured perimeter lights
- iPad Air 2 controls via the Creston app
- Wireless high-speed internet

## BACKROOM

- Portable 55" screen on a trolley with HDMI connectivity
- Wireless high-speed internet

## BOARDROOM

- Portable 55" screen on a trolley with HDMI connectivity
- Wireless high-speed internet

## SPACE ON ONE

- Portable 55" screen on a trolley with HDMI connectivity
- Wireless high-speed internet



## CONTACT

For more information

please call the Events Department on +44 (0)20 7300 5500

or email [event.londonenquiries@sbe.com](mailto:event.londonenquiries@sbe.com)