



Spectra

# London Programme Suggestions

SPECTRA - LEADING THE WAY





# About Spectra

Spectra provides Destination Management Services throughout the UK, with offices in London, England and in Edinburgh, Scotland. Our vast amounts of experience and longevity (in business for nearly 70 years), coupled with financial stability and an outstanding global reputation make us the UK's top DMC.

We're innovative and creative, with a team that can engage at all levels and is set up with the tools and the technology to do business in the 21st century. Spectra's team of solution providers is heavily focused on operations and our corporate culture is one of teamwork. Our extensive, in-depth knowledge of the wealth of venues available throughout the UK means that we do not sell "off-the-shelf" products and consider ourselves 100% capable of providing creative services in all areas.

Spectra's attention to detail means that nothing is left to chance – exemplary planning ensures a flawless delivery every time. Let Spectra into your world of planning meetings, incentives and flawless events.





# West End of London

Lying to the west of the old City area, the so-called West End now forms the heart of London, included in its area is the separate City of Westminster, which took shape around a royal palace founded more than 900 years ago where the Houses of Parliament now stand.

Further sights include Westminster Abbey, where sovereigns have been crowned since 1066, Whitehall and Trafalgar Square, where Nelson's column and the National Gallery stand. Not forgetting, of course, London's famous West End shopping and entertainment sectors around Piccadilly Circus.

Also included in this part of London are the Royal Parks and Royal residences of the past and present including St. James' Palace and Clarence House, Marlborough House and Buckingham Palace.





# City of London

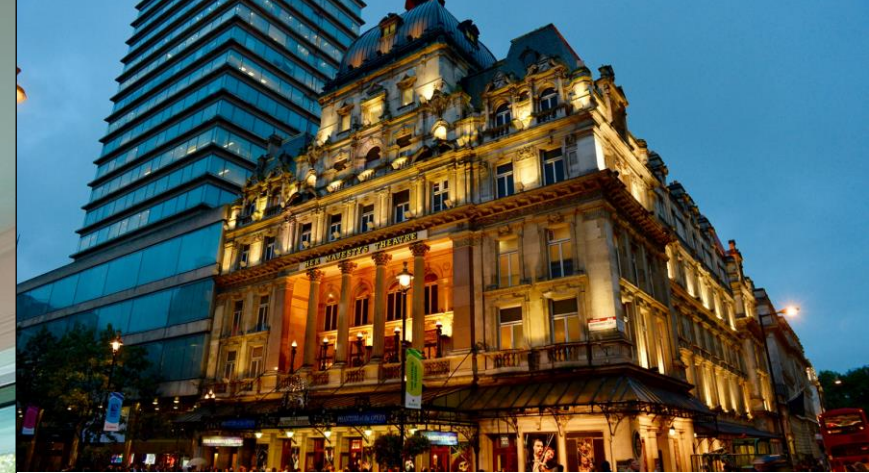
The old heart of London lies in the very separate and distinct area known as "The City", which covers just one of London's 610 square miles. It embraces the original Roman Londinium, which the Roman historian, Tacitus, described as a "meeting-place for merchants of many nations" and it is still precisely that today, as one of the world's three leading centres of international finance. Its streets also contain the oldest vestiges of London's history and amidst the power-houses of commerce, there are 40 churches of historical interest, 21 of them built by Sir Christopher Wren in addition to his master work, St. Paul's Cathedral, the city's serene centrepiece.





# Informal Evening Activities

- **Dine Around** - London boasts an infinite variety of restaurants.
- **Theatre Night**- London with over 40 theatres is renowned as the "Mecca" for theatre-goers!
- **Chef's Table** - Watching your food being prepared in front of you, undoubtedly adds another dimension to dining out.
- **Wine Cellars** - Few would know that under the bustling streets off Piccadilly lies one of London's best-kept secrets, the Berry Bros' 17th century vaulted cellars





# Pubs & Pub Crawls

The Pub is a very British institution, some even say it is our second home, and this evening you will have the opportunity to discover the reason why, as we take guests on a pub crawl around some of the most historic and atmospheric pubs in London. During the evening, guests will have the opportunity to sample some real British beer (served at room temperature) while chatting to locals at the bar and enjoying some traditional "pub grub".







# River Thames Dinner Cruises & Receptions



Enjoy the sights from another perspective. Cruising commences along the historic stretch of the River Thames between Westminster and Greenwich.

Enjoy a freshly prepared meal on board the **Silver Sturgeon**, matched with impeccable service, dancing beneath the double height glass ceiling and a promenade on the upper air deck.



There is no other boat for scheduled cruises on the River Thames like The **Glass Room** and no better seat on the river. It has long sleek lines and specially curved windows to give maximum visibility for the diners who are all accommodated on the same floor.



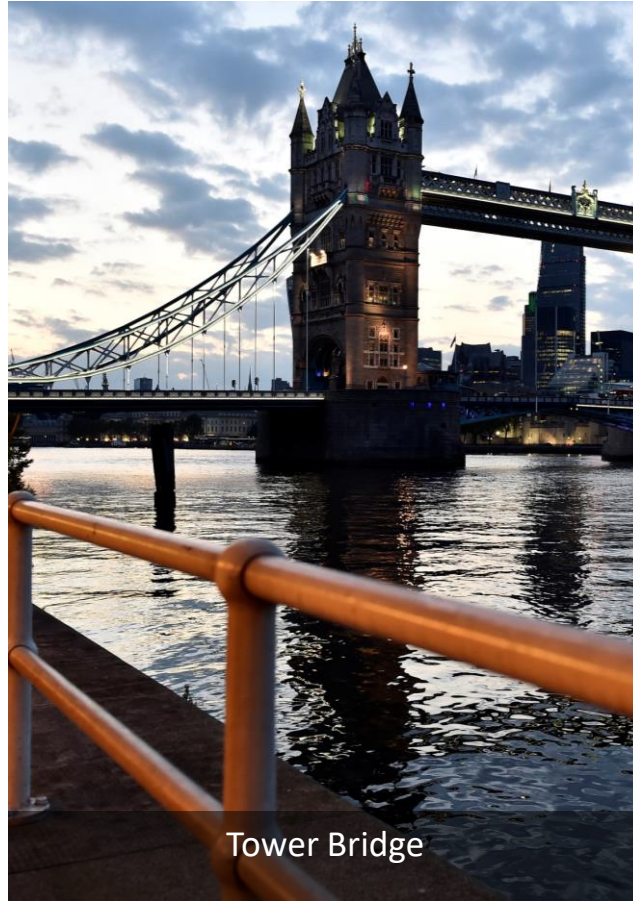




Home House



30 St Mary's Axe



Tower Bridge

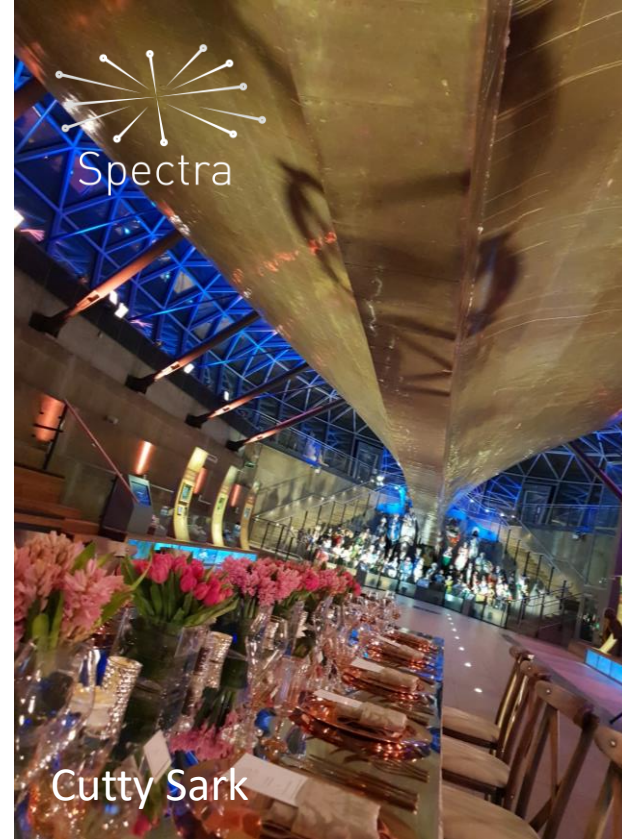


Lincoln's Inn Old Hall

# Venues – Up to 50 guests

- **Tower Bridge** is as recognisable as a symbol of London as the Eiffel Tower is in Paris or the Statue of Liberty in New York, this massive bascule bridge was opened to the public in June 1894 and still provides an invaluable crossing of the River Thames for pedestrians and road transport while allowing access for ships.
- **Home House** is one of London's most exciting private members clubs set in an 18<sup>th</sup> century townhouse designed by Robert Adam for the notorious Countess of Home.
- **Lincoln's Inn Old Hall** One of the few remaining Tudor buildings in London, a tablet outside the Old Hall records that it was built in the fifth year of King Henry VII's reign.
- **30 St Mary Axe** is one of London's most unique and prestigious landmarks. You'd be hard pressed to find a more prominent or popular skyscraper than the Gherkin, as this state-of-the-art 40-storey, corporate city HQ is usually called





Cutty Sark



Abbey Road Studios



The White Tower



Kensington Palace

## Venues for 50- 100 guests

The Cutty Sark is berthed in Greenwich, 'the centre of time and space.' Launched in 1869, she occupies a unique place in history as the world's sole surviving Tea Clipper. Soak up the history as you learn how, the Cutty Sark adventured across the continents.

Abbey Road Studios is the most famous recording studio complex in the world. The studios have been at the heart of the recording industry for over 80 years and have been the location of countless landmark recordings.

The White Tower is the oldest medieval building at the Tower of London. It was built to impress but was also equipped as a fortress and a residence, providing accommodation for the sovereign as well as deterring invaders and locking up Londoners.

Since its inception over 300 years ago, Kensington Palace has been home to many members of the Royal Family. The original house was purchased by William III who commissioned Sir Christopher Wren to convert it into a royal residence.





Drapers' Hall



Painted Hall



National Gallery



Lincoln's Inn Great Hall



St Paul's Cathedral

# Venues for 100 - 250 guests



- **Drapers' Hall** – one of London's largest livery halls
- **Painted Hall, ORNC** – London's Sistine Chapel
- **National Gallery** - one of the world's great permanent collections of paintings
- **Lincoln's Inn Great Hall** - Lincoln's Inn is the oldest of the four court inns
- **St Paul's Cathedral** - Widely considered to be one of the world's most beautiful buildings, St. Paul's is the Cathedral Church of the Diocese of London, built by Sir Christopher Wren

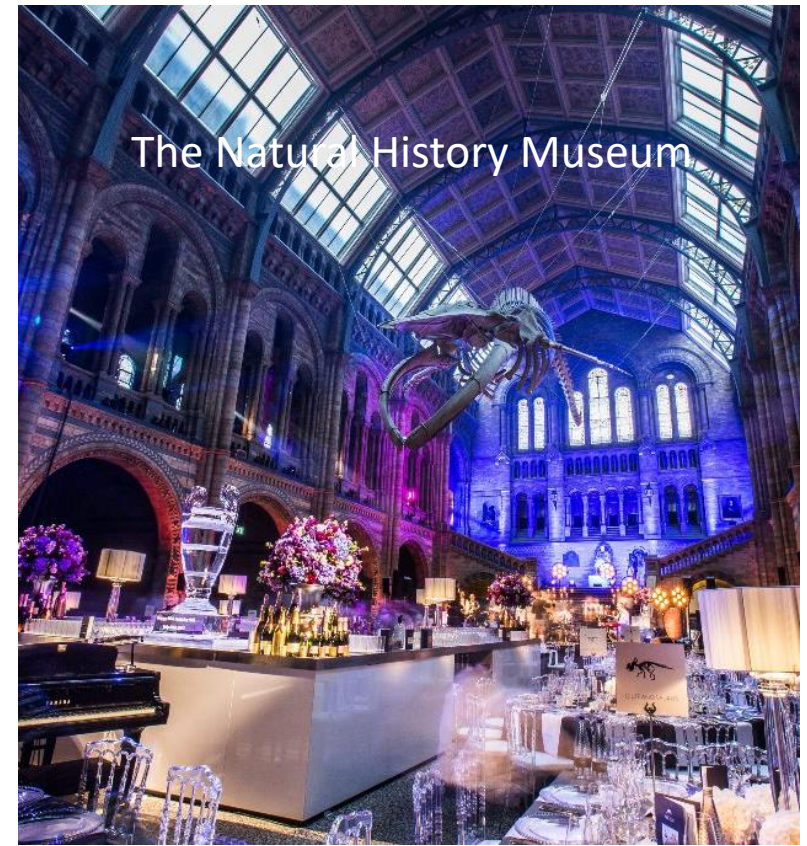




Banqueting House, Whitehall



The Guildhall



The Natural History Museum

## Venues for 250 - 400 guests

### **Banqueting House, Whitehall**

The Great Palace of Whitehall was the sovereign's main residence from the days of Henry VIII until its destruction in 1698.

**The Guildhall** has witnessed traitors' trials, heroes' welcomes and glittering state occasions. Traditional banquets here are formal affairs and the glittering splendour of the table decorations contrast with the 13th century stone walls, oak ceiling and stained glass windows.

**Natural History Museum**, located in Kensington, is perhaps one of London's most dramatic buildings. It was built in the Romanesque style, between 1873 - 1880 and its frontage covers 675ft.



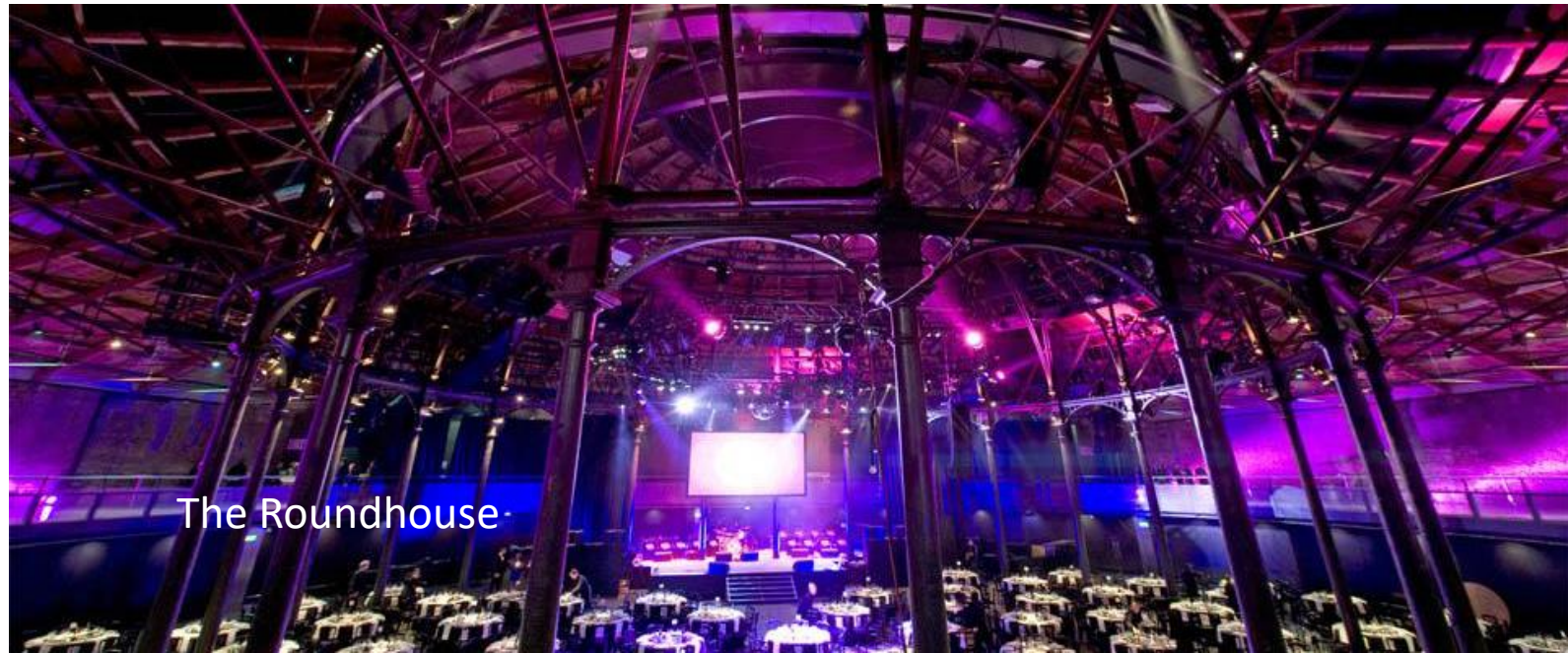


**The Brewery** occupies the site of the former Whitbread brewery in East London. In 1750, Samuel Whitbread transplanted his operations to Chiswell Street from two smaller breweries in Old Street and Brick Lane.



The Brewery

**The Roundhouse** was originally built as a railway train repair shed in 1847, the Roundhouse emerged as an arts centre in the 1960s. Today, it is one of the most architecturally unique event spaces in London. Its main space is the beating heart of the venue and great for any type of event.



The Roundhouse

Venues – up to 700  
guests





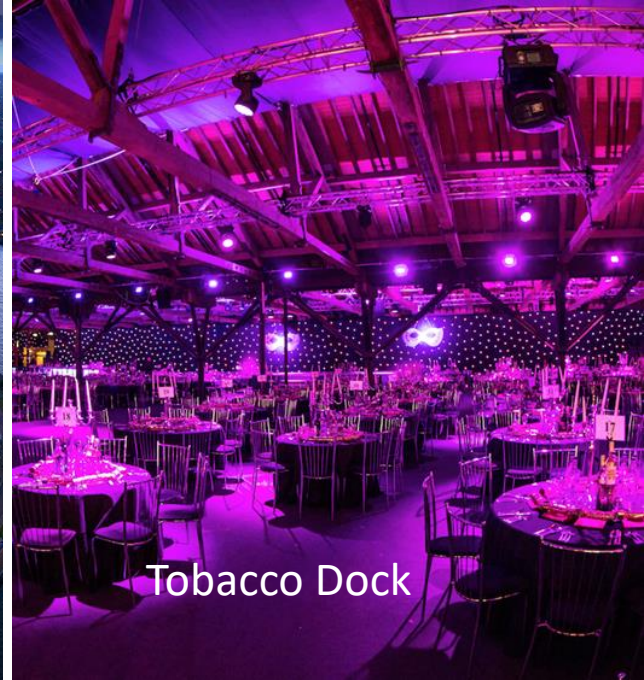
Westminster Abbey



Old Billingsgate



The O2 Arena

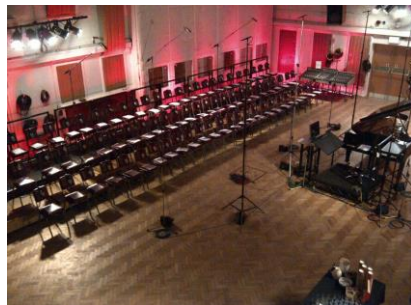


Tobacco Dock

## Venues for 500+ guests

- **College Garden at Westminster Abbey** - Guests are welcomed to one of London's iconic landmarks, steeped in more than a thousand years of history and with the special and private opportunity to look around the Abbey.
- **Old Billingsgate** - Situated in the heart of the historic City of London, just a short drive from the West End, and is one of London's most prestigious and exciting venues with beautiful views of the Thames.
- **The O2 Arena** - A magnificent multi-use venue with unbeatable sound and lighting facilities, handy draping system and changeable flooring. The O2 Arena can provide breakout rooms both within the auditorium and on the Level 1 concourse area.
- **Tobacco Dock** - Built in the early 19th century as a secure bonded warehouse and re-launched in 2012, its has been developed to create one of London's newest and most flexible event venue.





# A Wide Choice of Tours and Activities



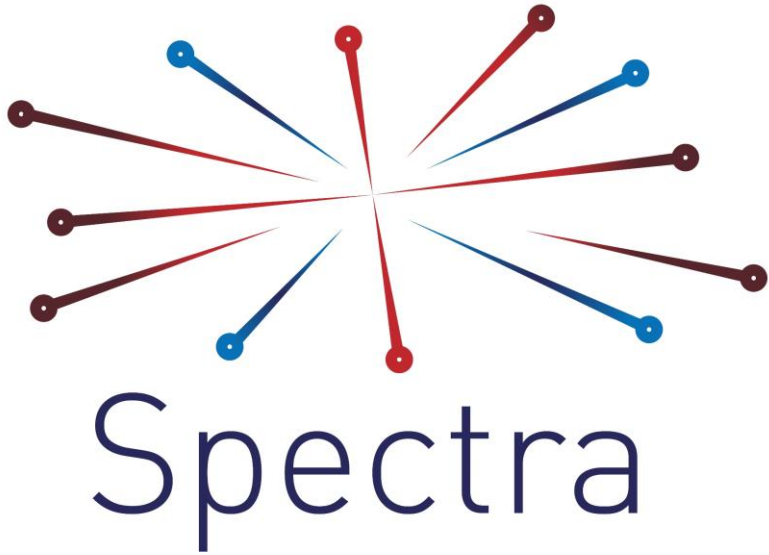




Full Day  
Excursions out  
of London

- Windsor Castle
- Cambridge
- Oxford
- Bath
- & many more





Email: [spectra@spectra-dmc.com](mailto:spectra@spectra-dmc.com)

Website: [www.spectra-dmc.com](http://www.spectra-dmc.com)

# Contact Spectra

---

London Office:

Spectra Travel England Ltd  
12-15 Hanger Green  
London, W5 3EL  
England  
Tel: +44 (0)20 8601 2400

Edinburgh Office:

Spectra in Scotland  
10 York Place  
Edinburgh, EH1 3EP  
Scotland  
Tel: +44 (0) 131 523 1416