

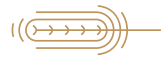


MEETINGS & EVENTS



The K Club, Ireland's first AA 5 Red Star Hotel, where the River Liffey flows at its most restful ebb.

A long-standing member of Preferred Hotels & Resorts, The K Club has pioneered 5-star service in Ireland from the very moment we opened our doors in 1991. Since then our reputation has been firmly established as the preferred country retreat for meeting and incentive groups.



KEY FACTS



30 Minutes from Dublin Airport & Dublin City Centre

134 Bedrooms (118 Bedrooms & 16 Suites)

18 Meeting Spaces

4 Individual Dining Outlets

4 Resort Bars

1 Authentic Irish Pub



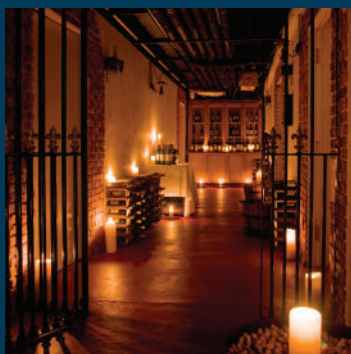


ON-SITE ACTIVITIES



Fishing
Falconry
Horse Riding
Archery
Clay Pigeon Shooting
Air Rifle Shooting
Kayaking
Tennis

Walking & Cycling
Whiskey Tasting
Wine Cellar Tours
Art & History Tours
Garden Tours
Spa
Golf



OUR EVENT SPACES

The K Club has a range of individual conference and meeting rooms offering a variety of styles and sizes. All of our conference rooms can cater to the latest in audio visual, with complimentary WiFi available throughout the entire resort.

MEETING & EVENTS FACILITIES

18 Meeting Rooms

Largest Meeting Room:
5,306 ft² / 493 m²

Total Meeting Space:
18,320 ft² / 1702 m²

High Speed 250mb Fibre
Broadband Across the Resort

Dedicated Meeting &
Events Planner

JOHN JEFFERSON SMURFIT ROOM

Max. Capacity: 48



TOWER ROOM

Max. Capacity: 19

INIS MÓR CONFERENCE ROOM

Max. Capacity: 146



LEGACY SUITE

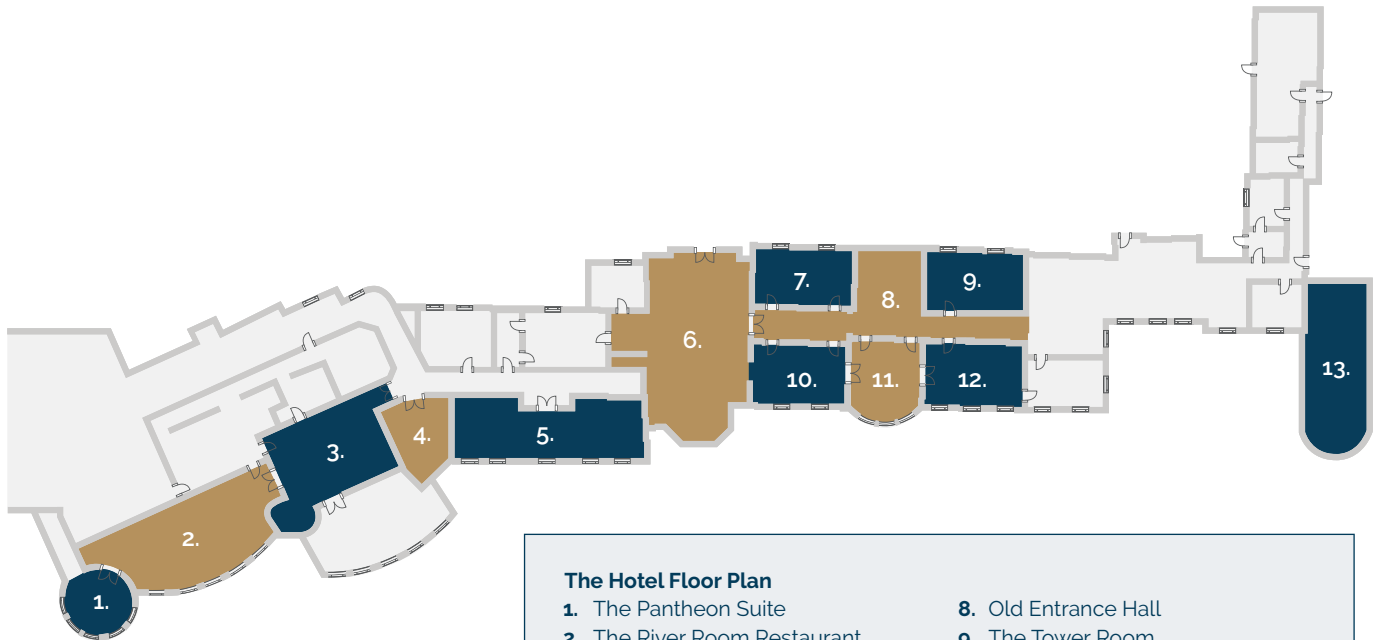
Max. Capacity: 500



THE HOTEL



The hotel at The K Club was originally built as 'Straffan House' in 1832 by Hugh Barton of the famous wine-making dynasty. The original design is based on a magnificent château at Louveciennes to the west of Paris. Transformed into a hotel in 1991, the house still retains many of its original architecture features which can be admired in our many meeting rooms within the old section of the building.



The Hotel Floor Plan

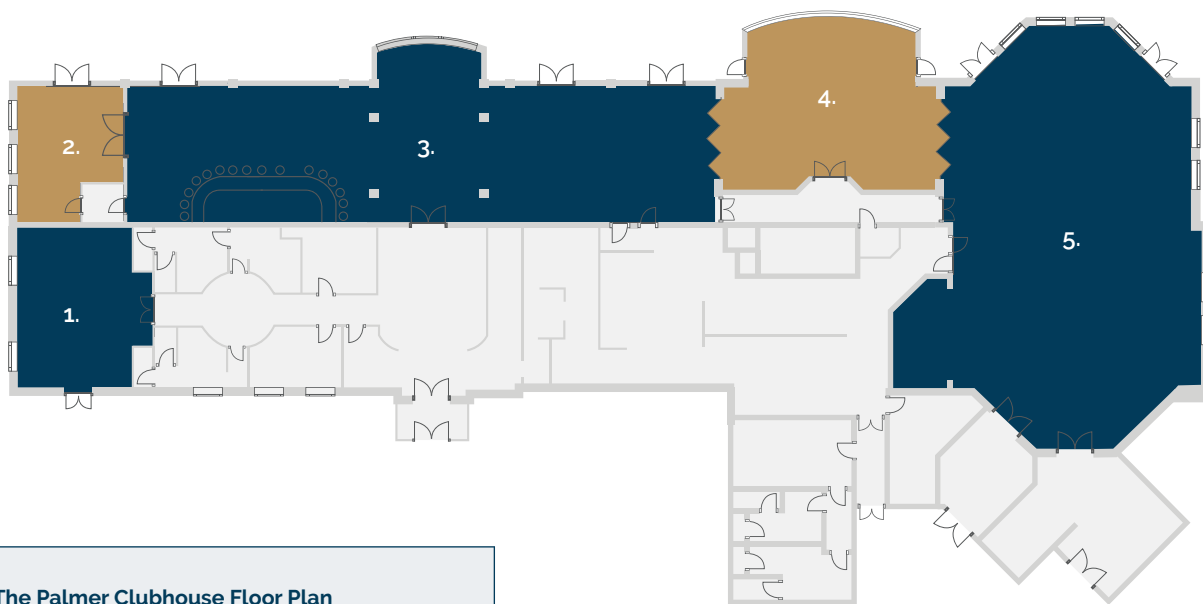
- | | |
|-------------------------------------|--|
| 1. The Pantheon Suite | 8. Old Entrance Hall |
| 2. The River Room Restaurant | 9. The Tower Room |
| 3. The Byerley Turk | 10. Chinese Drawing Room |
| 4. The Vintage Crop | 11. The Yeats Room |
| 5. Media Puzzle Lounge | 12. The John Jefferson Smurfit Room |
| 6. Hotel Lobby | 13. The Inis Mór Conference Room |
| 7. The Library | |



THE PALMER CLUBHOUSE



The Palmer Clubhouse is the home of legends. Named after course designer Arnold Palmer, the clubhouse features a terrace overlooking the 18th green of the Ryder Cup Course and a selection of dynamic meeting spaces, which can be manipulated to suit most meeting or event requirements.



The Palmer Clubhouse Floor Plan

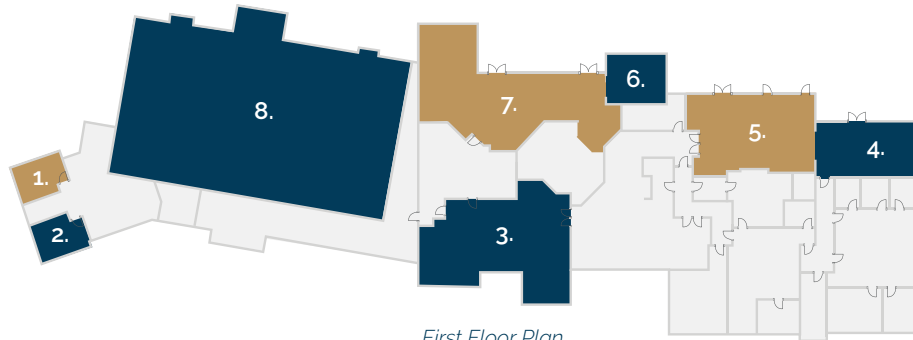
1. Palmer Committee Room
2. Palmer Bridge Room
3. Legends Restaurant
4. The Lakeview Room
5. The Arnold Palmer Room



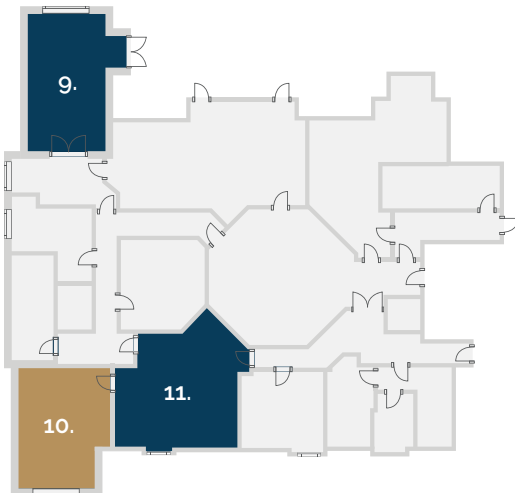
THE SMURFIT CLUBHOUSE



The Smurfit Clubhouse is unofficially known as the home of Conference & Banqueting at The K Club. Providing a large space spread over 3 floors, the clubhouse offers our largest banqueting room, the Legacy Suite, along with an assortment of smaller meeting spaces making it ideal for larger conference requirements.



First Floor Plan



Second Floor Plan

The Smurfit Clubhouse - First Floor Plan

1. The Kingfisher 1
2. The Kingfisher 2
3. The Deacon Room
4. The Swan Island Suite
5. The Smurfit Bar
6. Oriental Boardroom
7. The K Thai Restaurant
8. The Legacy Suite (*located on ground floor*)

Second Floor Plan

9. The Smurfit Boardroom
10. The Anna Livia Suite
11. The Ladycastle Lounge



MEETING SPACES



Hotel	ROOM SIZE (SQ/M)		ROOM SIZE (SQ/F)		ROOM HEIGHT (M)		ROOM HEIGHT (F)		U-SHAPE	CABARET	DINNER	DINNER BLOCK	DINNER DANCE	THEATRE BUFFET	CLASSROOM STYLE	BOARDROOM
Hotel																
The Inis Mór Conference Room	167	1797	4	13	38	70	-	-	-	-	70	146	54	44		
The Tower Room	51	549	4.5	14.7	19	-	-	-	-	-	-	-	-	19		
The John Jefferson Smurfit Room	63	678	4.5	14.7	28	30	45	28	-	30	48	32	18			
The Library	52.25	562	4.5	14.7	-	-	30	20	-	20	30	-	18			
The Yeats Room	52	560	4.5	14.7	-	-	20	18	-	-	32	-	16			
The Byerley Turk *	-	-	4.5	14.7	-	-	42	20	-	34	-	-	-			
The River Room	-	-	4.5	14.7	-	-	100	50	76	76	-	-	-			
Palmer Clubhouse																
The Arnold Palmer Room	305	3283	3	9.8	40	90	140	70	100	110	160	96	60			
The Lakeview Room	76	818	3	9.8	20	24	40	20	-	30	50	24	20			
Legends Restaurant *	-	-	3	9.8	-	-	66	-	-	66	-	-	-			
Palmer Committee Room	-	-	3	9.8	12	-	20	16	-	16	20	-	12			
Palmer Bridge Room	-	-	3	9.8	-	-	-	10	-	-	-	-	10			
Smurfit Clubhouse																
The Legacy Suite	493	5306	5.2	17	120	210	350	140	320	250	500	250	-			
The Deacon Room	127	1367	2.8	9	24	35	70	26	-	80	70	35	26			
The Ladycastle Lounge	28	301	2.6	8.5	12	15	16	12	-	13	-	-	12			
The Anna Livia Suite	31	333	2.6	8.5	-	15	-	-	-	-	20	10	14			
The Smurfit Boardroom	36	387	2.6	8.5	14	-	-	-	-	-	-	-	14			
The Kingfisher 1 & 2	20	215	2.6	8.5	10	14	-	-	-	-	-	-	12			
The Smurfit Bar *	75	807	2.8	9	-	-	-	-	-	80	-	-	-			
The Swan Island Suite	53	570	2.8	9	-	-	40	24	-	30	50	-	24			
The Great Wall Suite	32	344	2.8	9	-	-	16	16	-	-	-	-	-			
The K Thai Restaurant *	-	-	2.8	9	-	-	48	-	-	48	-	-	-			

* Existing Set Up Only



THINGS TO DO OFF-SITE



Kildare

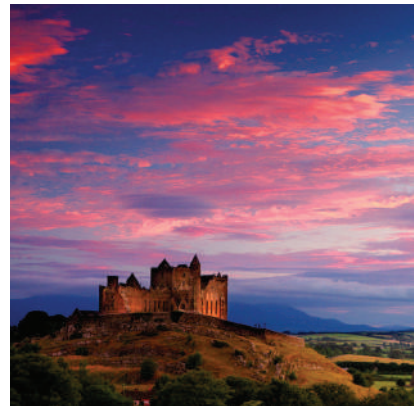
Tour of the National Stud
Shopping in Kildare Village
A Day at the Races

Dublin

The Guinness Storehouse
Dinner in St. Patrick's Cathedral
Dublin Castle
Trinity College

Rest of Ireland

Newgrange
Kilkenny Castle
The Hill of Tara
Glendalough
The Rock of Cashel



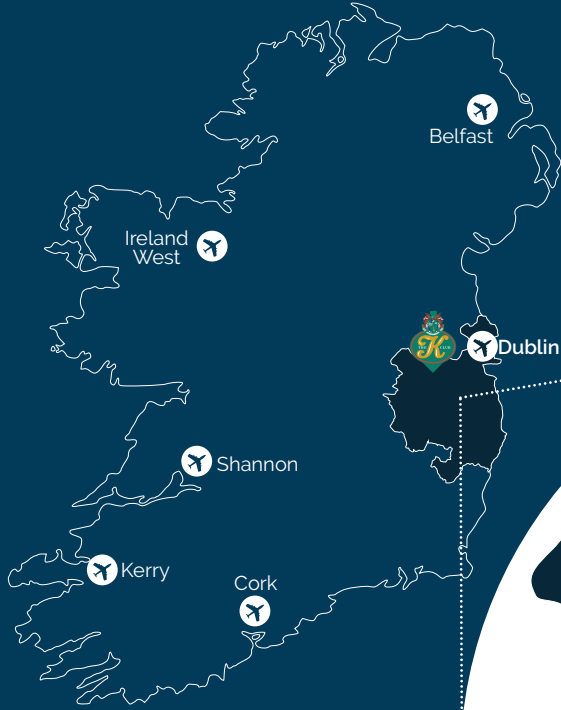


THE RESORT MAP





FIND YOUR WAY



The K Club, Straffan, Co. Kildare, Ireland

 @thekclub  @thekclubireland  @thekclub

sales@kclub.ie | +353 1 601 7200 | www.kclub.ie