



THE PENINSULA

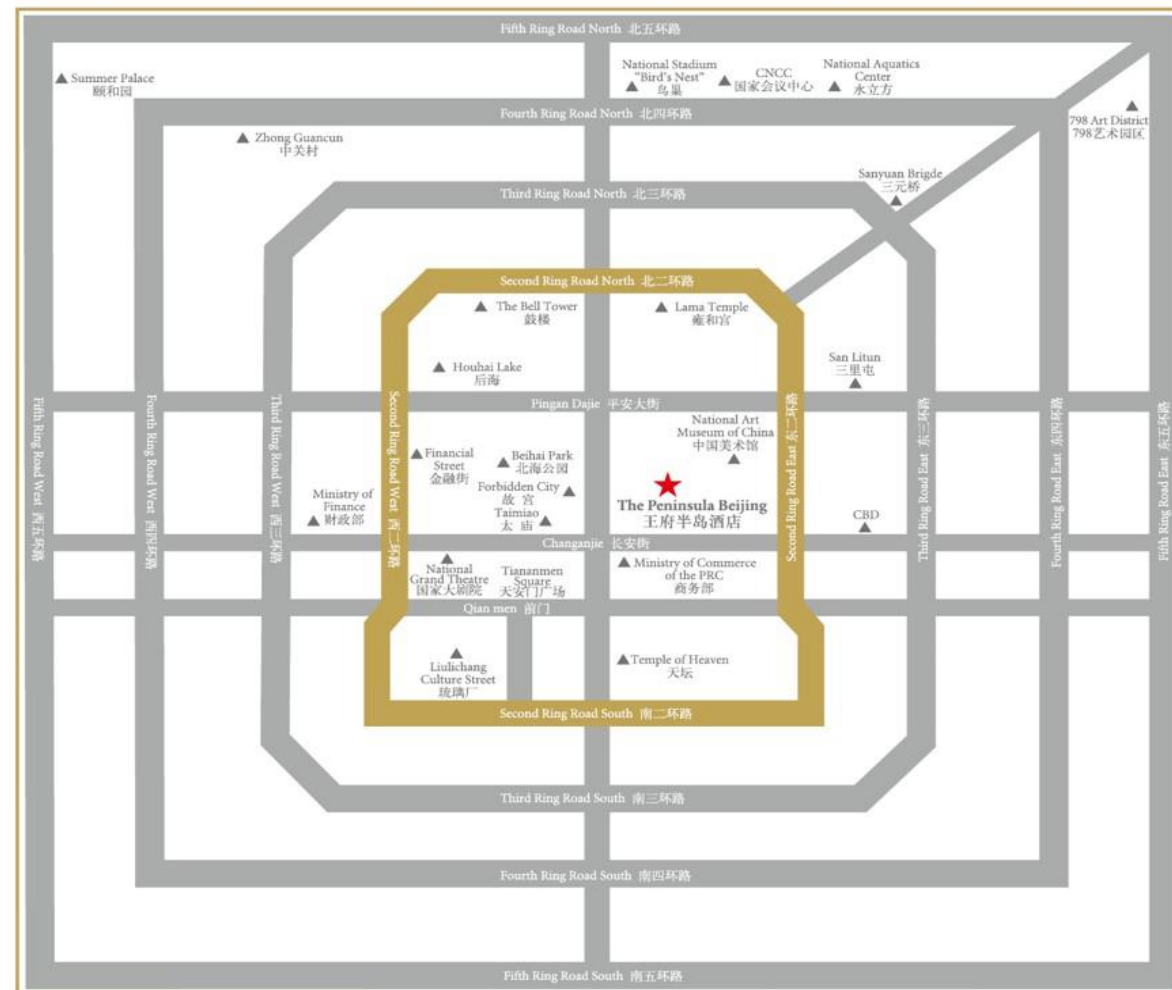
BEIJING

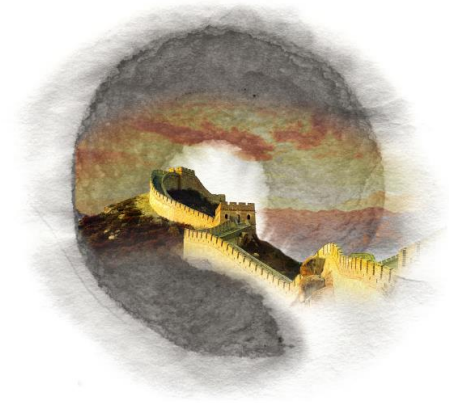
王府半岛酒店



THE PERFECT LOCATION

Situated in the Wangfujing shopping district, it's within walking distance of the Forbidden City and Tiananmen Square, and close to the Second Ring Road, offering unrivalled proximity to the Chinese capital's major commercial, tourist and diplomatic districts.





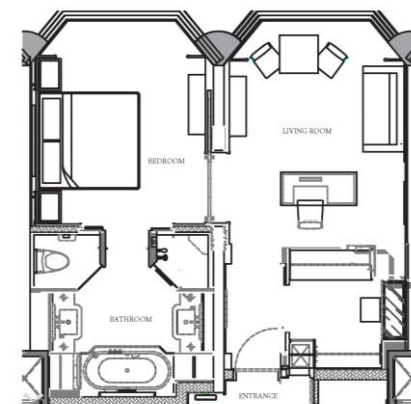
OUR SUITES

The Peninsula Beijing has set the benchmark for luxury and opulence in one of the capital's premier addresses. Sumptuously appointed suites epitomise the traditions of the hotel's Chinese heritage.

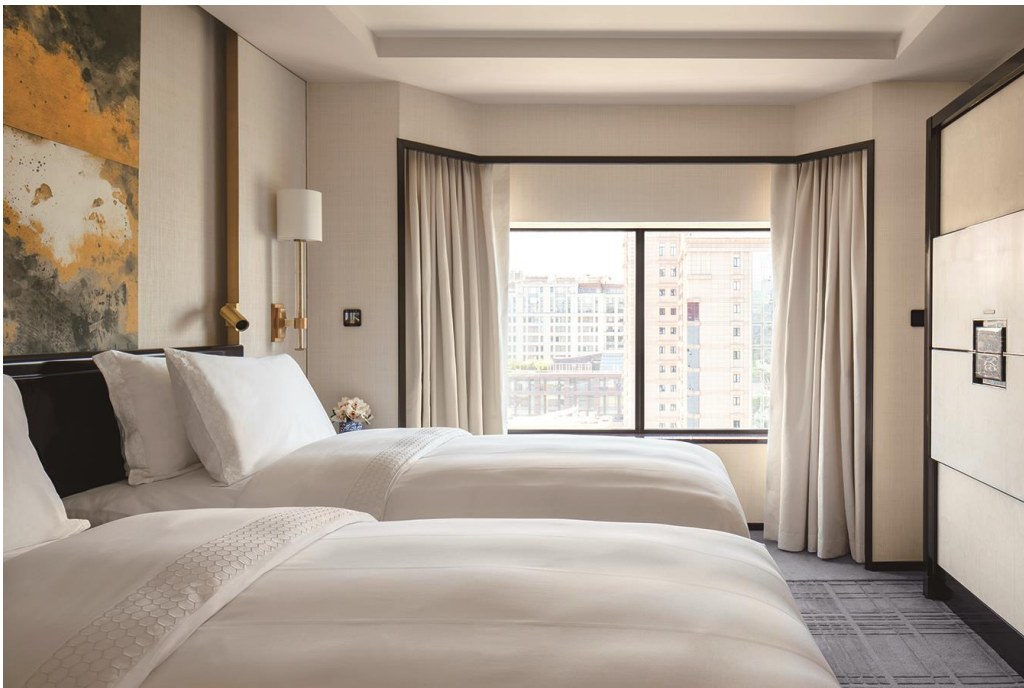
SUPERIOR SUITE

60SQ_M/645 SQ_FT

5F-13F

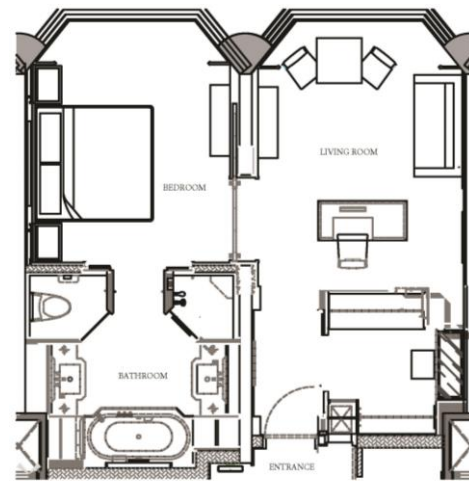


KING



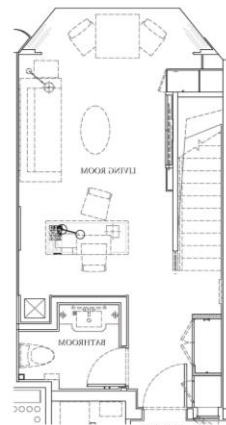
DELUXE SUITE

65 SQ_M/700 SQ_FT
5F-13F

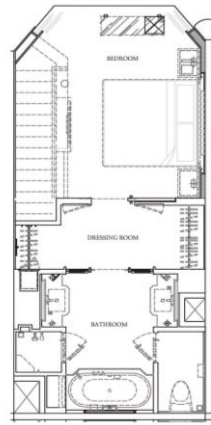




DUPLEX SUITE
74 SQ_M/769 SQ_FT
14F



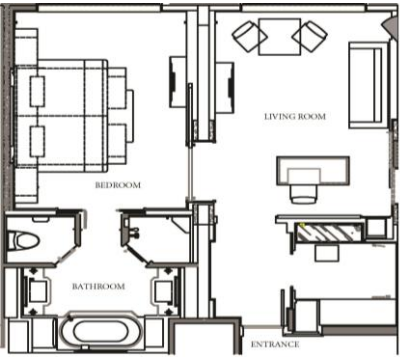
F1



F2

PREMIER SUITE

75 SQ_M/807 SQ_FT
5F-13F

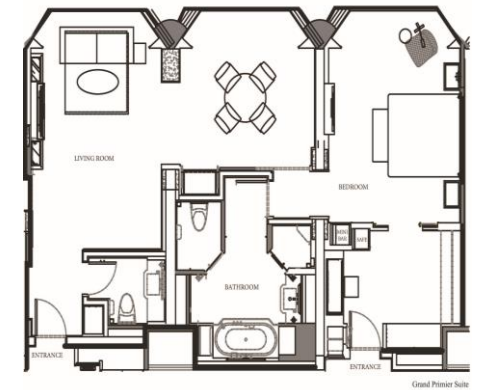


GRAND PREMIER SUITE

102 SQ.M/1098 SQ.FT

5F-13F

INTER-CONNECTING WITH PREMIER



FLOOR PLAN A



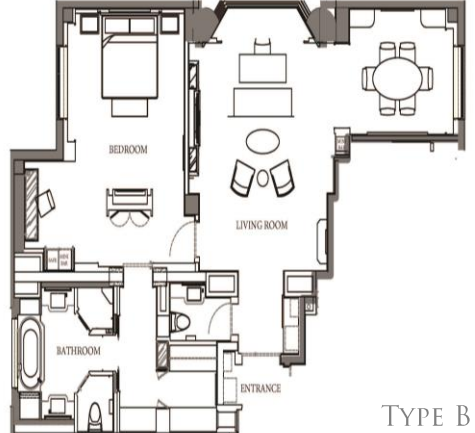
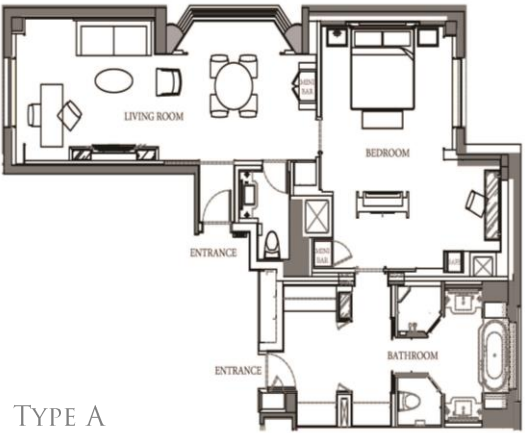
FLOOR PLAN B

WANGFUJING SUITE

110 SQ_M/1184 SQ_FT

5F-13F

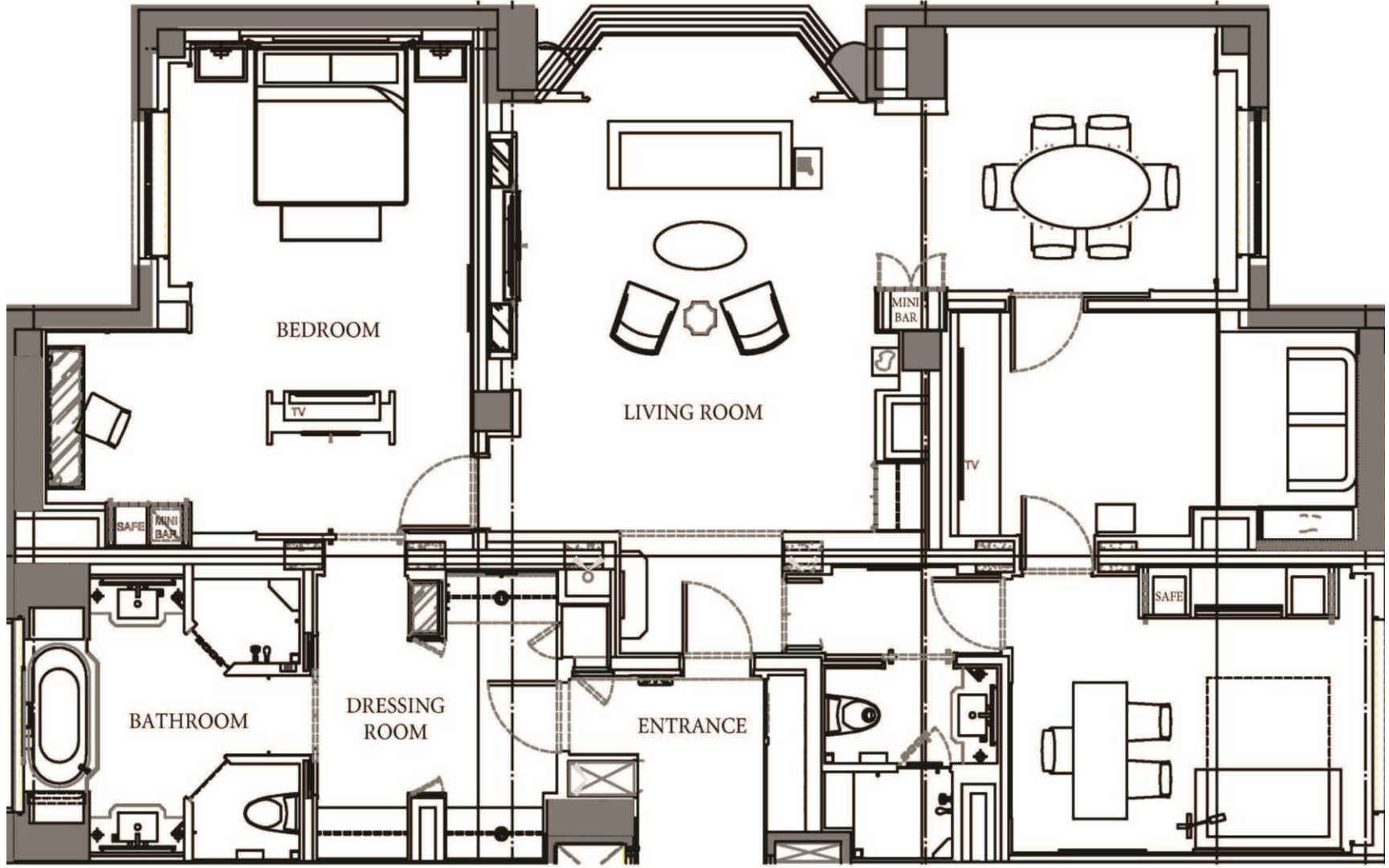
OUTER-CONNECTING WITH SUPERIOR TWIN



BEIJING SUITE 165 SQ.M/1776 SQ.FT 5-13F



FLOOR PLAN - BEIJING SUITE



THE PENINSULA SUITE 660 SQ.M/7,104 SQ.FT

THE PENINSULA
BEIJING
王府半岛酒店



Reading room



Bathroom



Bedroom



Reading room



Living room

THE PENINSULA SUITE 660 SQ.M/7,104 SQ.FT

THE PENINSULA
BEIJING
王府半岛酒店



Living room



Dining room



Dressing room

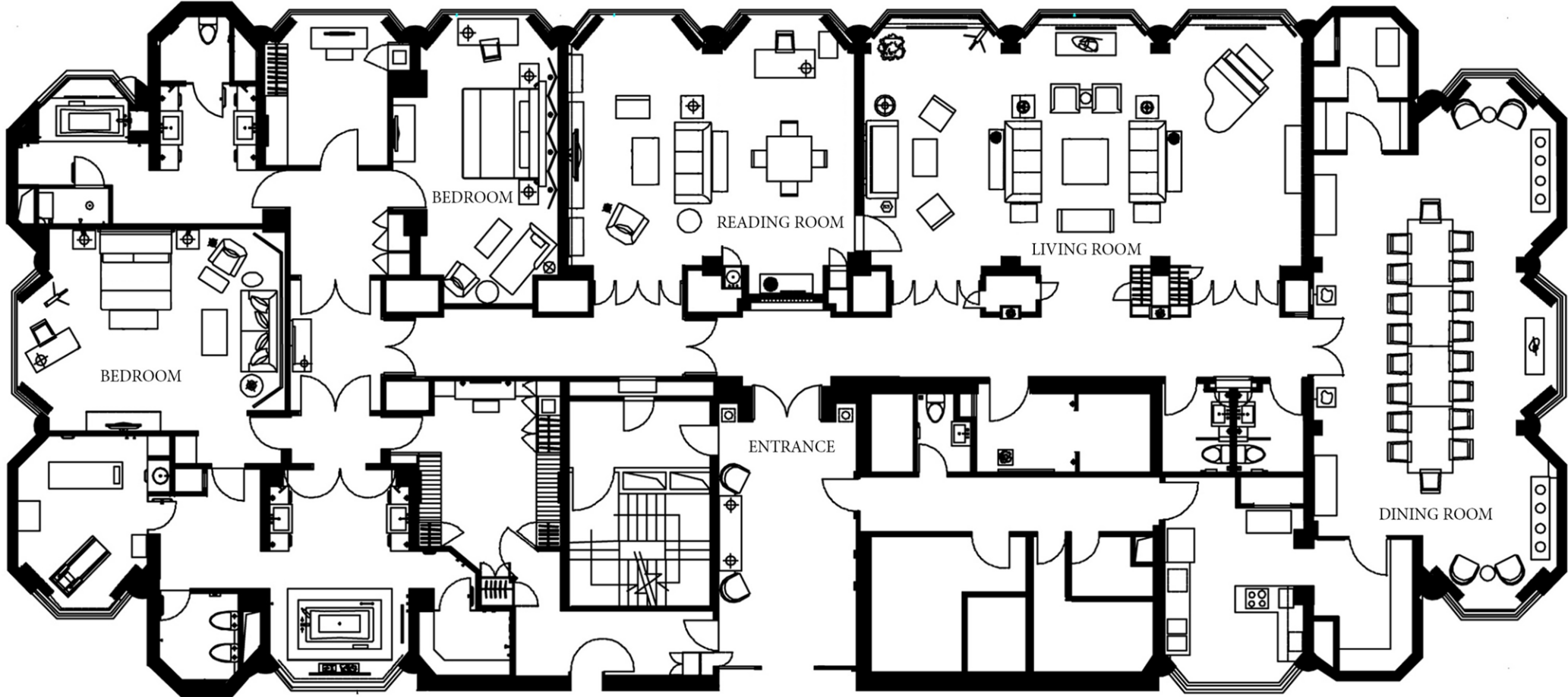


Second bedroom - Double bed convertible to Hollywood King



Private elevator

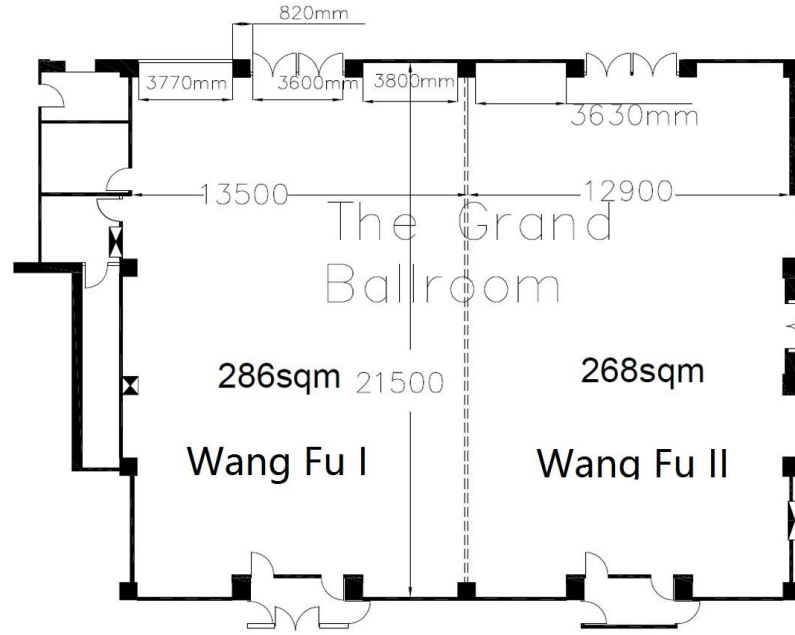
FLOOR PLAN - THE PENINSULA SUITE





HOTEL LOBBY





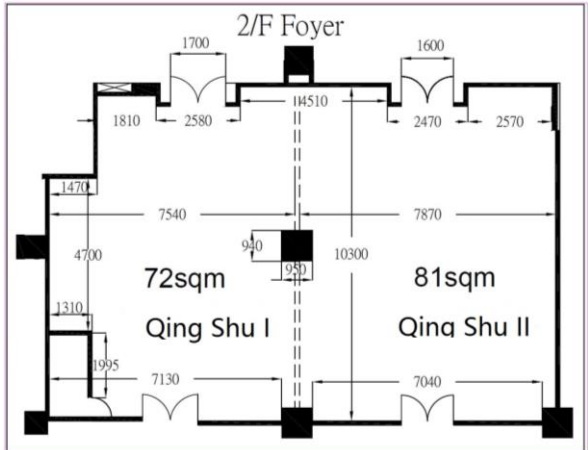
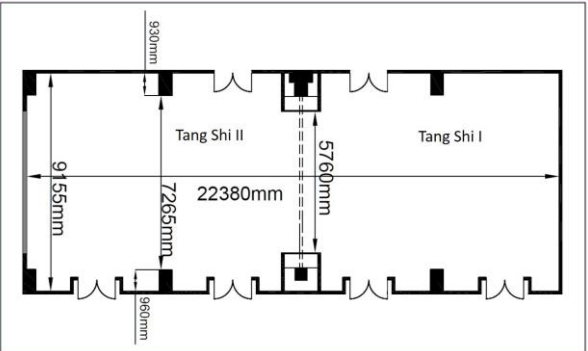
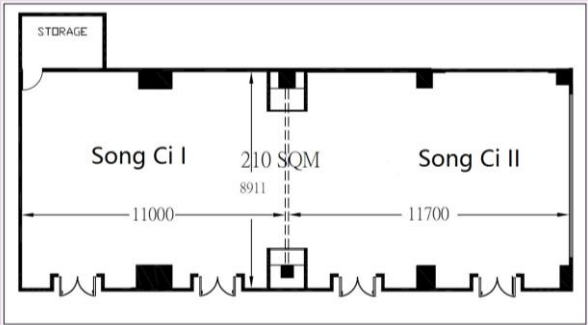
WANGFU BALLROOM

The Wangfu Ballroom is an exceptional setting for both private parties and business events. With its stylish design and sophisticated ambience, this impressive space can accommodate up to 600 guests in a variety of configurations. For smaller events and meetings, the ballroom can be divided into separate sections.





FUNCTION ROOMS



DINING CHOICES



Specialising in modern French cuisine using only organic and traceable ingredients, JING is open for breakfast, lunch and dinner. Combining sophisticated décor and a stylishly designed show kitchen, the restaurant can accommodate up to 126 guests, with a private Chef's Table up to 10 guests, plus a wine cellar and a bar serving homemade craft cocktails.

Reflecting an interpretation of a traditional nobleman's courtyard house, Huang Ting features a large collection of Chinese antiques and serves authentic dim sum, exquisite Cantonese cuisine and Beijing specialties for lunch and dinner. The restaurant has four private dining rooms for up to 12 guests each, and the main dining room can accommodate up to 80 guests.



DINING CHOICES



The Lobby



The open-air roof lounge in Wangfujing gets set for summer with tailor-made cocktail paired with iconic Beijing views, modern Mediterranean sharing plates.

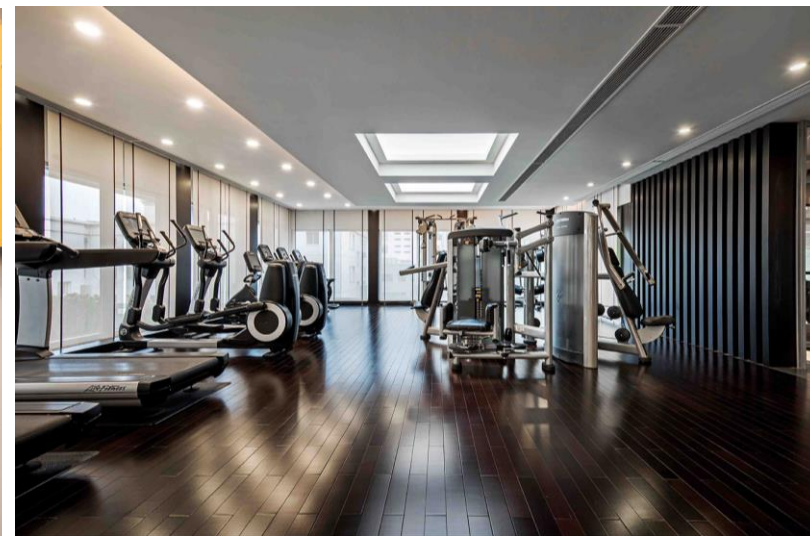
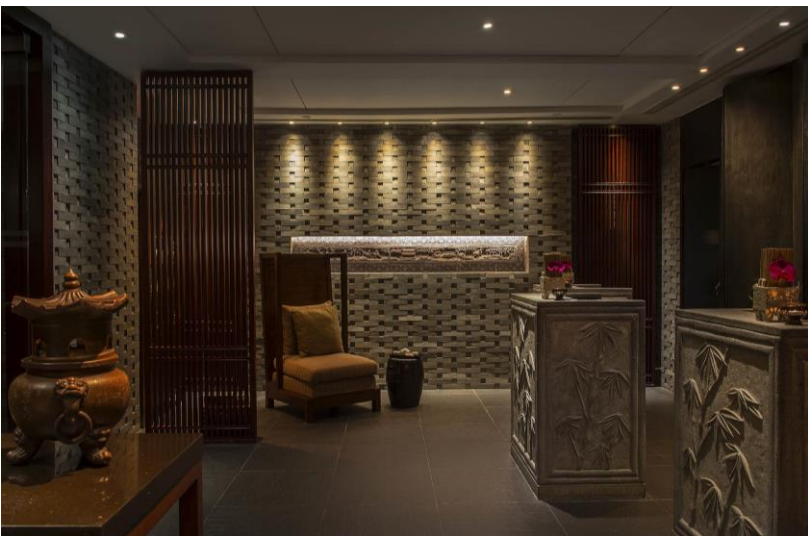


SPA & WELLNESS CENTRE

SPA
THE PENINSULA



THE PENINSULA
FITNESS CENTRE



MAKING YOUR MEETING MEMORABLE
AT THE PENINSULA BEIJING





CONTACT US

Thank you for your time, we look forward to helping you create a truly memorable company event.



8 Goldfish Lane, Wangfujing, Beijing 100006.

The People's Republic Of China.

中国北京王府井, 金鱼胡同8号, 邮政编号: 100006

T: +86 10 8516 288

F: +86 10 6510 6311

pbj@peninsula.com

peninsula.com