



RYDGES

MELBOURNE



# CONFERENCE & EVENTS



REFRESHINGLY LOCAL

[RYDGES.COM](http://RYDGES.COM)



# A NEW RYDGES MELBOURNE

## **New Event Spaces. Opening 2023.**

Immersed in the heart of Melbourne CBD, the newly refurbished Rydges Melbourne is the perfect destination for business or pleasure. Events at Rydges Melbourne are not just a space – but the ultimate event experience.

Rydges Melbourne is home to eleven flexible conference and event venues, including a brand-new state-of-the-art Centre Stage function room, perfect for elegant weddings and memorable events, and an expansive Rooftop Terrace overlooking Her Majesty's Theatre and Chinatown.

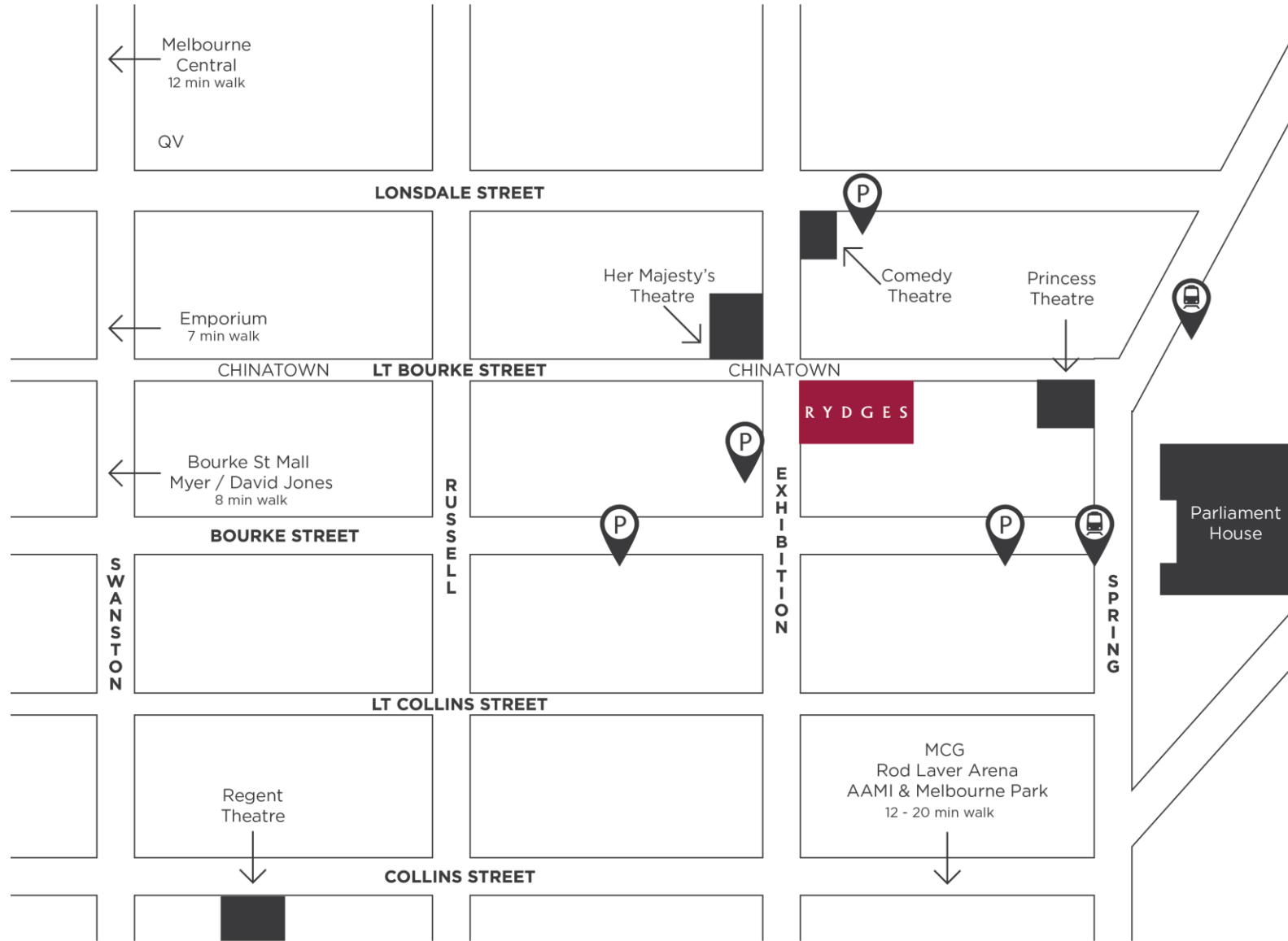
Spanning 1500sqm across two levels, every element of the property has been transformed, with the inclusion of the best-in-market sound, lighting and music systems.

Refreshingly local in design, the refurbished modern rooms create a comfortable and serene environment inspired by the Australian landscape, offering three different accommodation types including rooms, suites and apartments.

The new Rydges Melbourne will feature a streamlined check-in, in-room connectivity, interactive fitness studio, outdoor rooftop pool and a new signature restaurant and bar.

Opening mid-2023, our team of local experts look forward to welcoming you to the new Rydges Melbourne.

# LOCATION



# CENTRE STAGE

Whether you're planning a gala dinner, conference, launch or your wedding – our largest event space is perfect for when you want to take Centre Stage. Start your momentous occasion in the pre-function bar, with views overlooking Exhibition Street and Melbourne's theatre district.

With soaring vaulted ceilings, Centre Stage can fit up to 340 guests seated or 500 cocktail or theatre, or can be divided into two separate areas to suit your event needs.

- 495sqm pillar-less function room
- Private pre-function bar
- 7m x 4m built-in HD LED Projector screen
- 2 x 200 inch HD Projector screens
- Built-in surround sound
- Divider wall to create two separate venues
- Complimentary high-speed Wi-Fi
- Tailored menus using seasonal and local produce



\*Current images are renders

# MEETING PLACE

With an abundance of natural light, and overlooking Her Majesty's Theatre, the Meeting Place can host up to 300 guests cocktail or theatre and 240 seated. Fitted with divider walls with the ability to create four private function rooms or any configuration of your choice.

Whether you're hosting a gala dinner, cocktail party or delivering a presentation — the picturesque windows allow abundant natural light and offer a view of Melbourne's theatre precinct and the gateway to Chinatown, the perfect Melbourne setting.

- 5 x 160 inch built-in HD LED projector screen
- Built-in surround sound
- Complimentary sparkling, still water and juice in pre-function foyer
- Divider walls to create four separate venues
- Complimentary Wi-Fi
- Bespoke catering options



\*Current image are renders

# TERRACE & ROOFTOP TERRACE

When you're looking for the ultimate Melbourne rooftop experience, look no further. Taking in views of Her Majesty's Theatre and the city skyline, this venue combines all Terrace Rooms and the adjoining Rooftop Terrace. The expansive indoor-outdoor venue can host 360 guests for cocktail style events, with an awning and heating for those brisk Melbourne nights.

Spanning the full outdoor space, this level two rooftop space is the ideal place to celebrate a special occasion, or for a relaxed setting. There's no event that wouldn't be elevated by this space. With lounge furniture throughout, all surrounded by lush greenery, stunning by day and breathtaking by night — just wait and see.

- Private rooftop with Melbourne skyline views
- Terrace Rooms fitted with divider walls with the ability to create three private function rooms for more intimate gatherings and fitted with 3 x 75-inch LCD screens
- Rooftop Terrace features a luxurious outdoor bar and mobile bar cart, lounge furniture, umbrellas, lush planter boxes, lighting, outdoor heating and awning.



Current images are renders.

# ROOFTOP POOL

A playful and glamorous celebration of our proud 1970's heritage, come up to Level 23 and get poolside. This Rooftop Pool can be transformed into your own private event space, with sweeping Melbourne city views.

The luxe cocktail bar is fully-equipped for your next celebration, with nearby chef stations. Invite up to 60 guests to your next event — it's sure to make a splash.

- Sweeping views of Melbourne city skyline
- Exclusive hire of Rooftop heated pool
- Luxurious private bar
- Lounge furniture and umbrellas
- Bluetooth in-built sound system



\*Current images are renders

# CAPACITIES

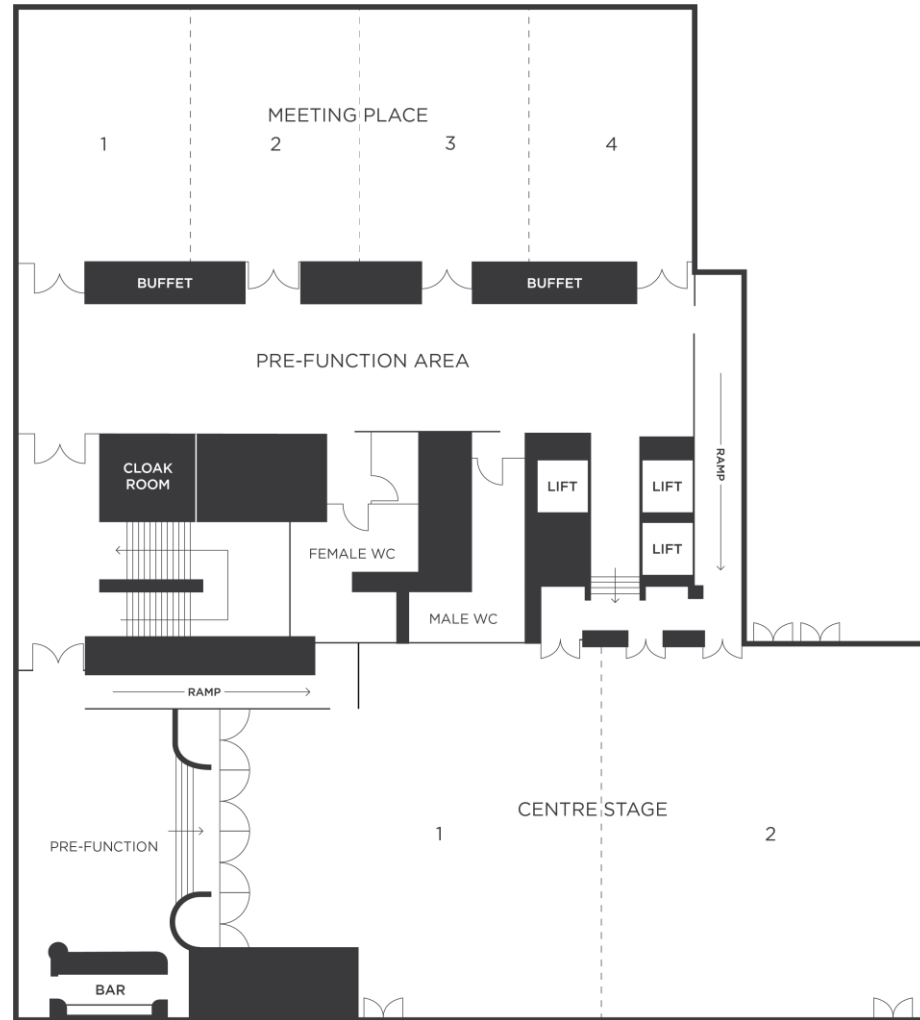
	Centre Stage			Meeting Place							Terrace Room						
	CENTRE STAGE	CENTRE STAGE 1	CENTRE STAGE 2	MEETING PLACE	MEETING PLACE 1	MEETING PLACE 2	MEETING PLACE 3	MEETING PLACE 4	MP 1&2, 2&3, 3&4	MP 1,2&3 OR 2,3&4	TERRACE ROOMS & ROOFTOP	TERRACE ROOMS	TERRACE ROOM 1	TERRACE ROOM 2	TERRACE ROOM 3	TERRACE ROOM 1&2 or 2&3	ROOFTOP POOL
	LEVEL 1			LEVEL 1							LEVEL 2						LEVEL 23
AREA M <sup>2</sup>	495	-	-	332	83	83	83	83	166	249	460	143	57	-	-	100	-
THEATRE	500	176	220	295	75	80	80	75	168	225	-	-	-	-	-	-	-
CLASSROOM	120	48	58	88	24	24	24	24	40	64	-	-	-	-	-	-	-
U-SHAPE	-	-	-	-	20	20	20	20	-	-	-	-	-	-	-	-	-
CABARET	248	96	128	192	48	48	48	48	96	144	-	-	-	-	-	-	-
BOARDROOM	-	-	-	-	-	-	-	-	-	-	-	-	22	20	20	-	-
BANQUET	340	140	150	240	50	60	60	50	110	170	-	56	22	20	20	42	-
BANQUET W/ DANCEFLOOR	290	120	110	180	-	-	-	-	60	80	-	-	-	-	-	-	-
COCKTAIL	500	250	250	300	80	80	80	80	140	200	360	130	-	-	-	60	60
EXHIBITION	22	*	*	15	*	*	*	*	*	*	-	-	-	-	-	-	-

\* Discuss with our Sales Team for the best exhibition configuration

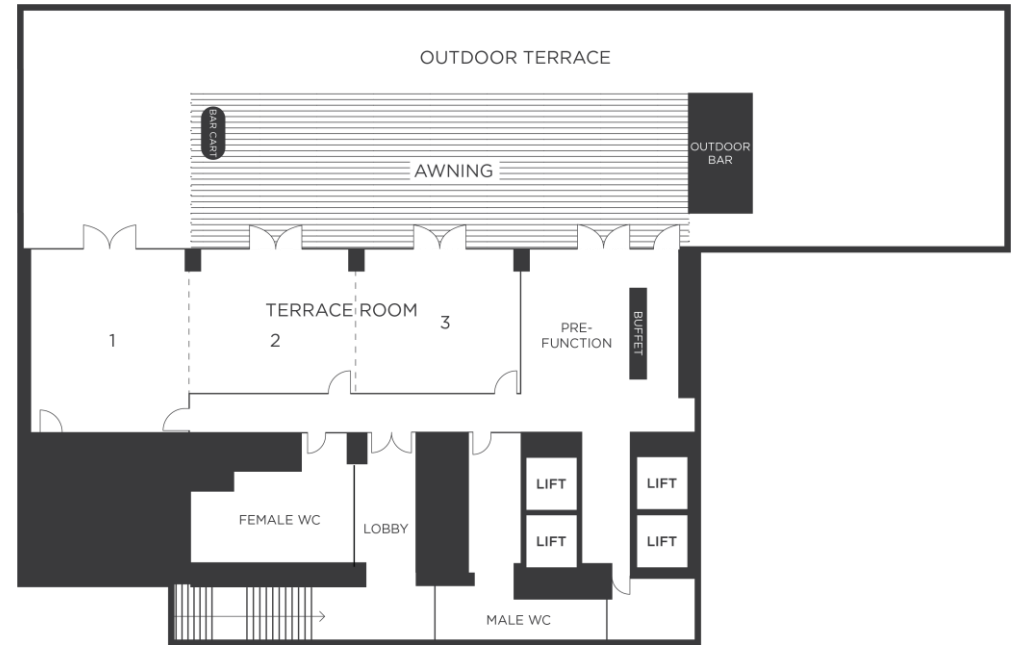


# FLOORPLAN

## Level One



## Level Two



# A NEW RYDGES HOTEL EXPERIENCE

## Hotel Features

Refreshingly local in design, the refurbished, modern rooms create a comfortable and serene environment inspired by the Australian landscape, offering three different accommodation types including king rooms, suites and apartments. The new Rydges Melbourne will feature a streamlined check-in, in-room connectivity, interactive fitness studio, outdoor rooftop pool and a new signature restaurant and bar.

- Conveniently located in the heart of Melbourne CBD – theatre district, iconic dining, Chinatown, exclusive Collins St boutiques, major sporting precincts and entertainment at your doorstep
- 370 Guest King Rooms, Suites & Apartments
- Seamless and connected check-in experience
- Heated outdoor pool on the rooftop
- Interactive fitness studio and outdoor terrace
- Bar, restaurant and outdoor dining
- 24 hour in-room dining
- Complimentary high-speed Wi-Fi



\*Photo of room



\*Current images are renders



\*Current images are renders



\*Photo of room



RYDGES

HOTELS · RESORTS

RYDGES MELBOURNE

186 Exhibition Street,  
Melbourne, VIC 3000

ENQUIRIES

+61 484 869 019

[functions\\_rydgesmelbourne@evt.com](mailto:functions_rydgesmelbourne@evt.com)

REFRESHINGLY LOCAL

[RYDGES.COM](http://RYDGES.COM)