



THE LANGLEY

MEETINGS & EVENTS



Timeless Luxury. A World Apart.



THE LANGLEY



Refined and inviting, The Langley hosts a wealth of inspired gatherings and milestone celebrations. Designed to offer a light-filled space, the estate's historic Winter Garden is an elegant and enchanting backdrop for exceptional events. Available for exclusive use, the hotel offers complete privacy, in the heart of Buckinghamshire. With 7 meeting and events spaces, all fully air conditioned and with complimentary high speed Wifi.

Located only 20 minutes to Heathrow airport and the historic town of Windsor, The Langley is within easy reach of key locations in the South East. Surrounded by 150 acres of historic formal gardens and parkland, yet within easy reach of three major motorways, the M4, M25 and M40.







WINTER GARDEN

The Winter Garden is the original Victorian Orangery for the house, located at the rear of the hotel, with views over the gardens, lake and parkland beyond. A terrace complements the space and offers outdoor area for guests to use during their event.

The terrace can accommodate a marquee to offer additional space in a wet weather scenario. Inside the room, a mezzanine offers a break out area or space for a bar or entertainment. Seating up to 80 for a private dinner, or 90 in theatre style, the Winter Garden offers exceptional space for a meeting or private social event alike.



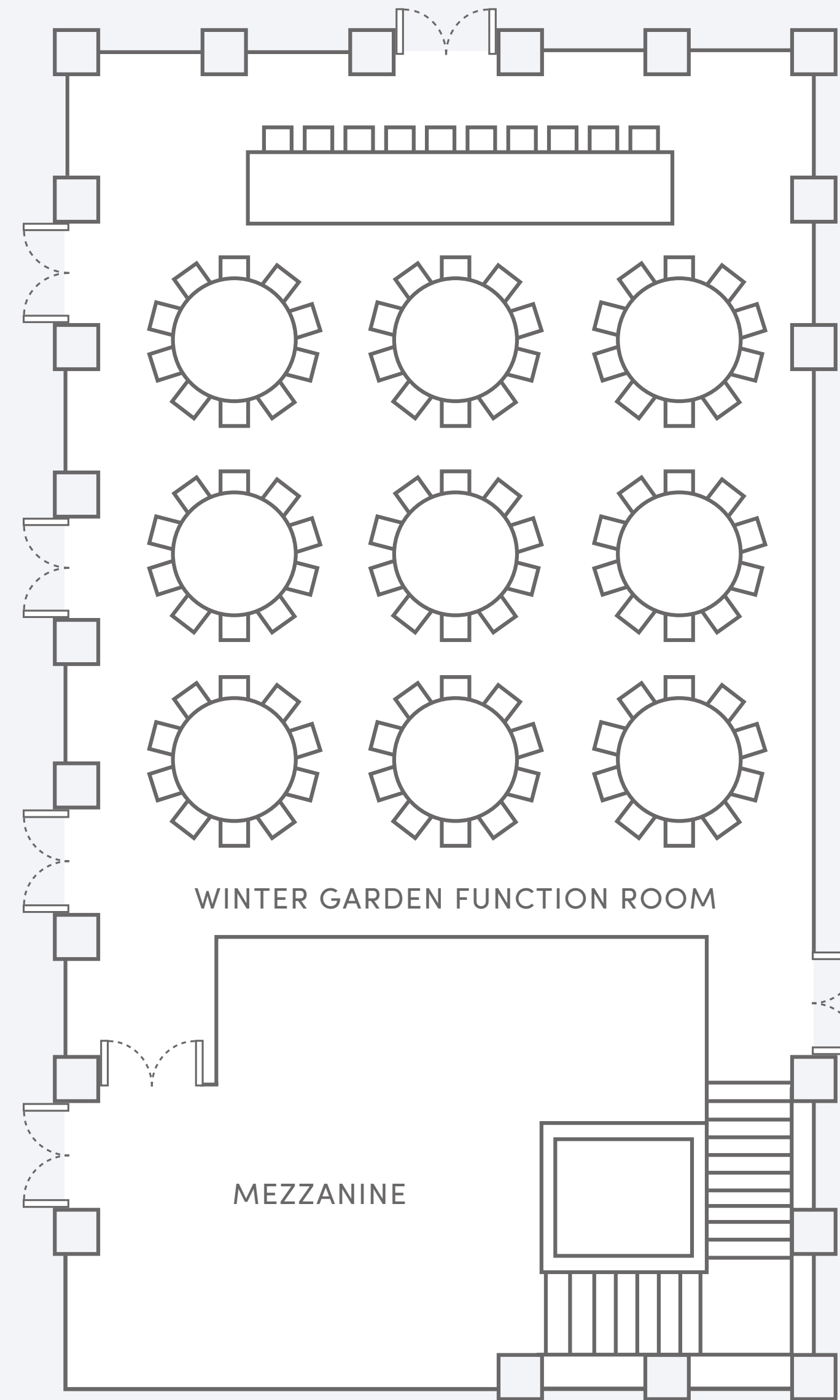
WINTER GARDEN

DIMENSIONS		m
LENGTH		12.9
WIDTH		10.5
TOTAL AREA (m ²)		137.21

RATES		£
FULL DAY		2,000
EVENING		1,500

SETUP	Max Capacity
THEATRE	80
CEREMONY	80
CABARET	40
U SHAPE	30
CLASSROOM	45
1 LONG	30
BOARDROOM	26
HOLLOW SQUARE	36

GROUND FLOOR





LAKE ROOM

Offering an intimate dining or meeting space, the Lake Room is located overlooking the garden and lake at the rear of the hotel. With doors directly accessing the terrace, the natural daylight pours into this beautiful room.

A perfect room for celebrations with friends and family, seating up to 15 guests comfortably.



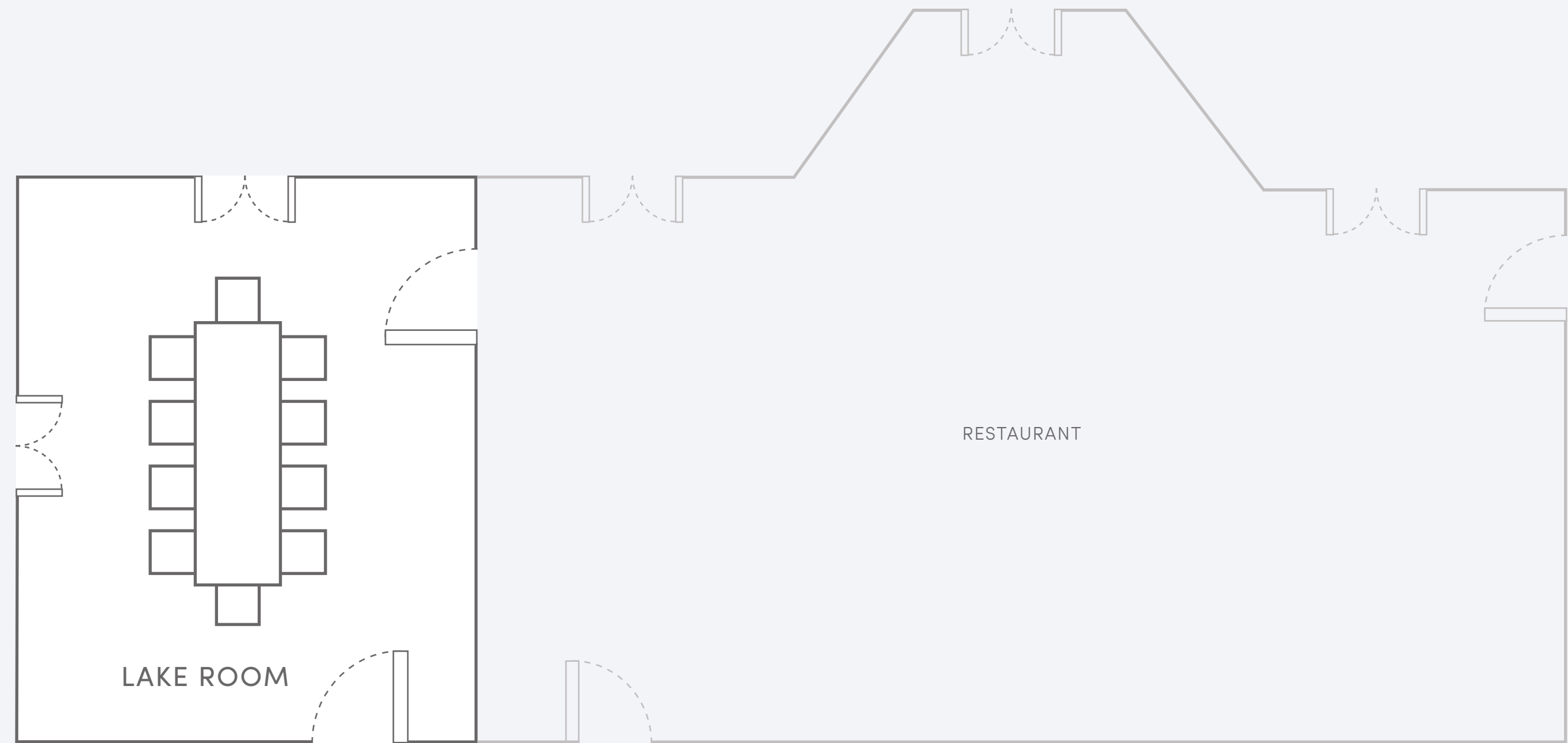
LAKE ROOM

GROUND FLOOR

DIMENSIONS		m
LENGTH		6.3
WIDTH		4.9
TOTAL AREA (m ²)		30.9

RATES		£
FULL DAY		N/A
EVENING		500

SETUP		Max Capacity
LONG TABLE		15
CEREMONY		20





WINDSOR

Located close to the main reception area, Windsor is an intimate boardroom with large windows, offering a quiet meeting space for up to 12 guests.

Coupled with Blenheim as a break out space for refreshments area or buffet lunch space, the two rooms together are a perfect option for small gatherings. Full digital capabilities provided with Wifi and a large HD television.



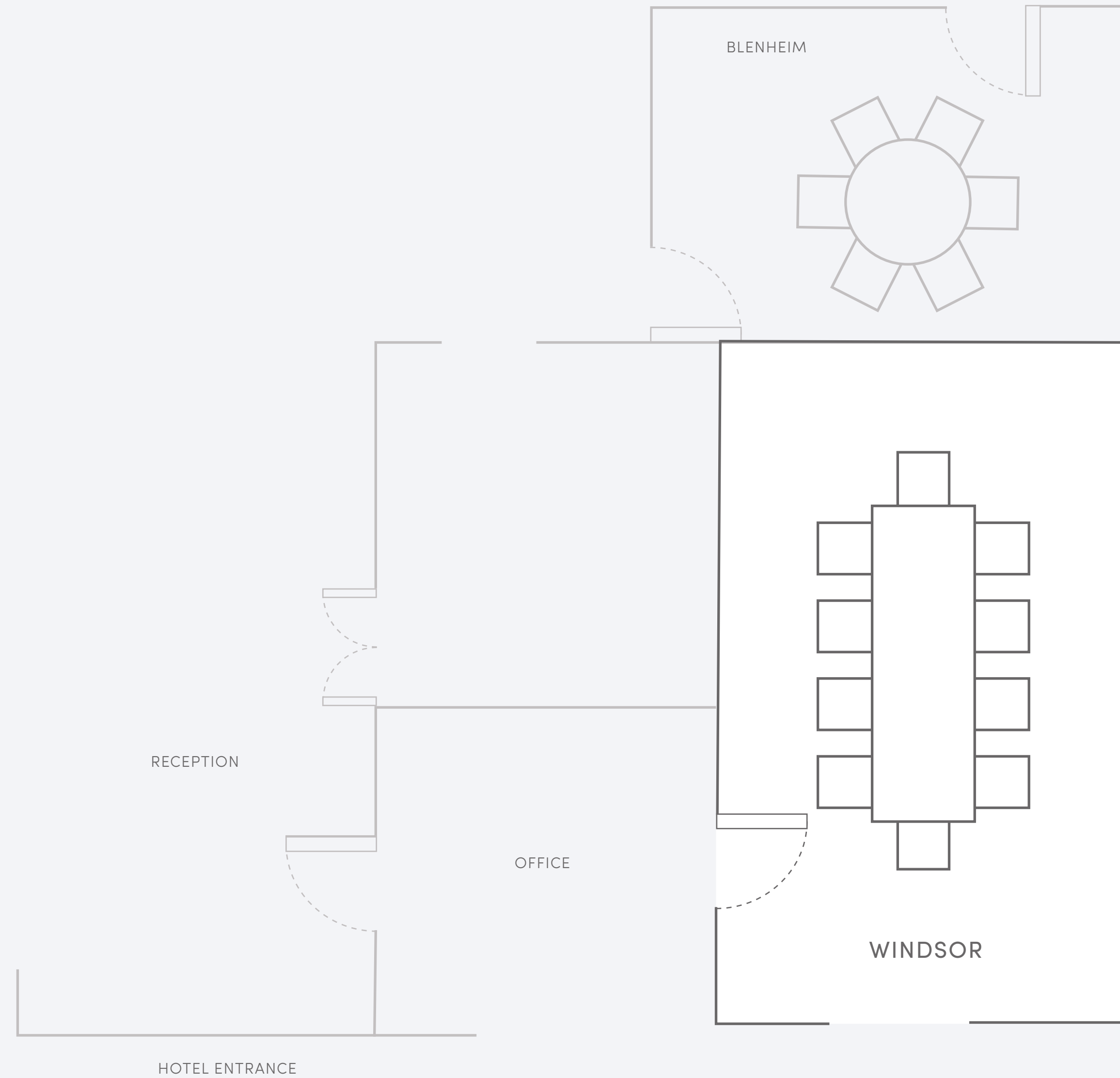
WINDSOR

GROUND FLOOR

DIMENSIONS		m
LENGTH		6.3
WIDTH		3.7
TOTAL AREA (m ²)		23.31

RATES		£
FULL DAY		500
EVENING		400

SETUP	Max Capacity
BOARDROOM	10





BLENHEIM

Next to Windsor, this space is a small boardroom for 6 guests maximum.

The wood panelled walls and original features, provide a traditional style for a formal meeting. With air conditioning and full digital facilities including an HD television.



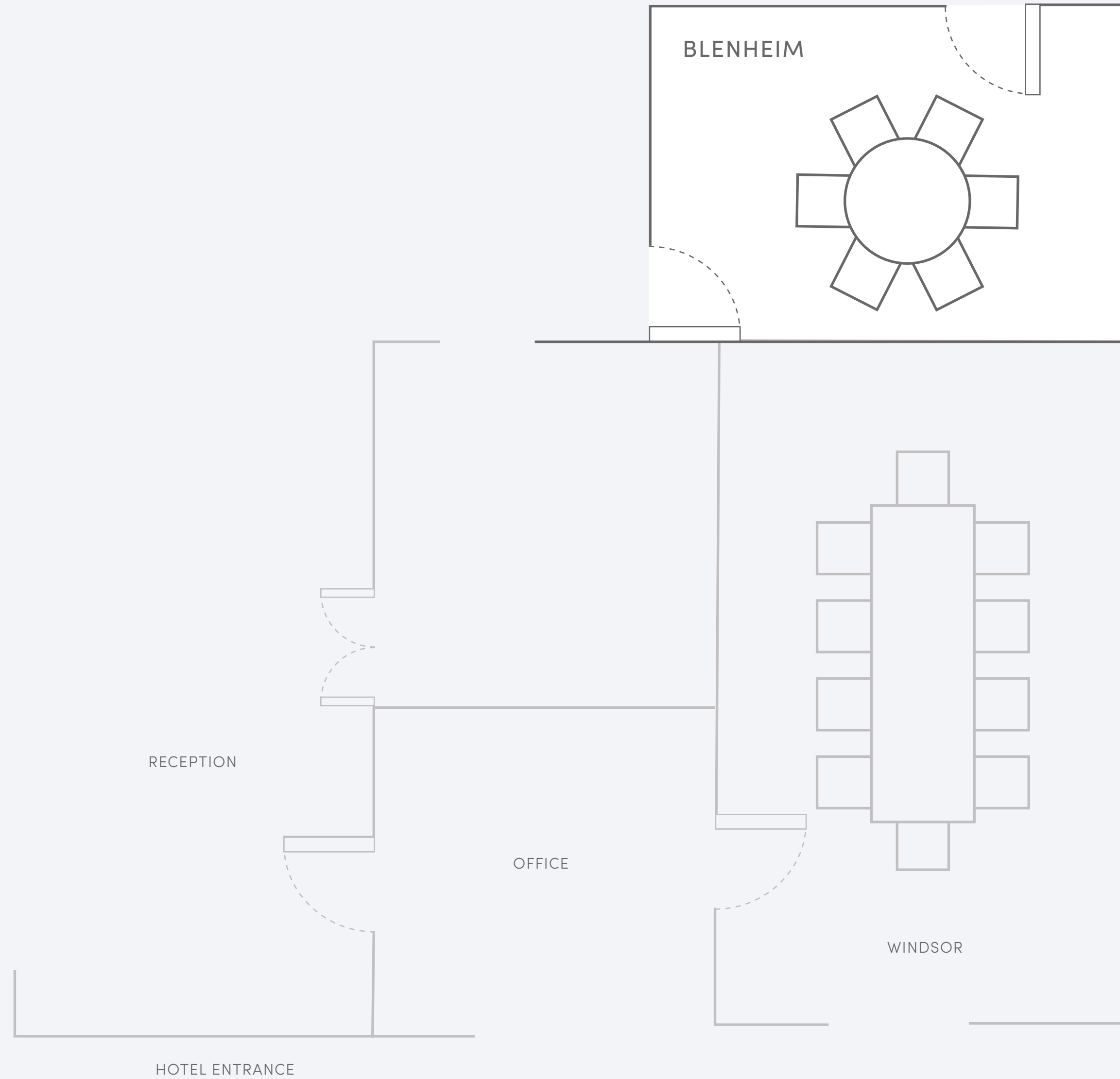
BLLENHEIM

GROUND FLOOR

DIMENSIONS		m
LENGTH		4.8
WIDTH		3.4
TOTAL AREA (m ²)		16.32

RATES		£
FULL DAY		300
EVENING		250

SETUP		Max Capacity
ROUND TABLE		6





BOOT ROOM & IVER

The Boot Room is situated on the lower ground floor, originally the kitchen of the family home, so traditional features remain. Accessed from inside the house, or directly from the main driveway, the Boot Room is a flexible option for a drinks reception or private dinner.

Iver is an additional space, accessed directly from the Boot Room itself or the corridor outside the room. Iver can host private dinners or meetings for up to 12 guests. Together the two spaces offer an intimate and cosy space for events.



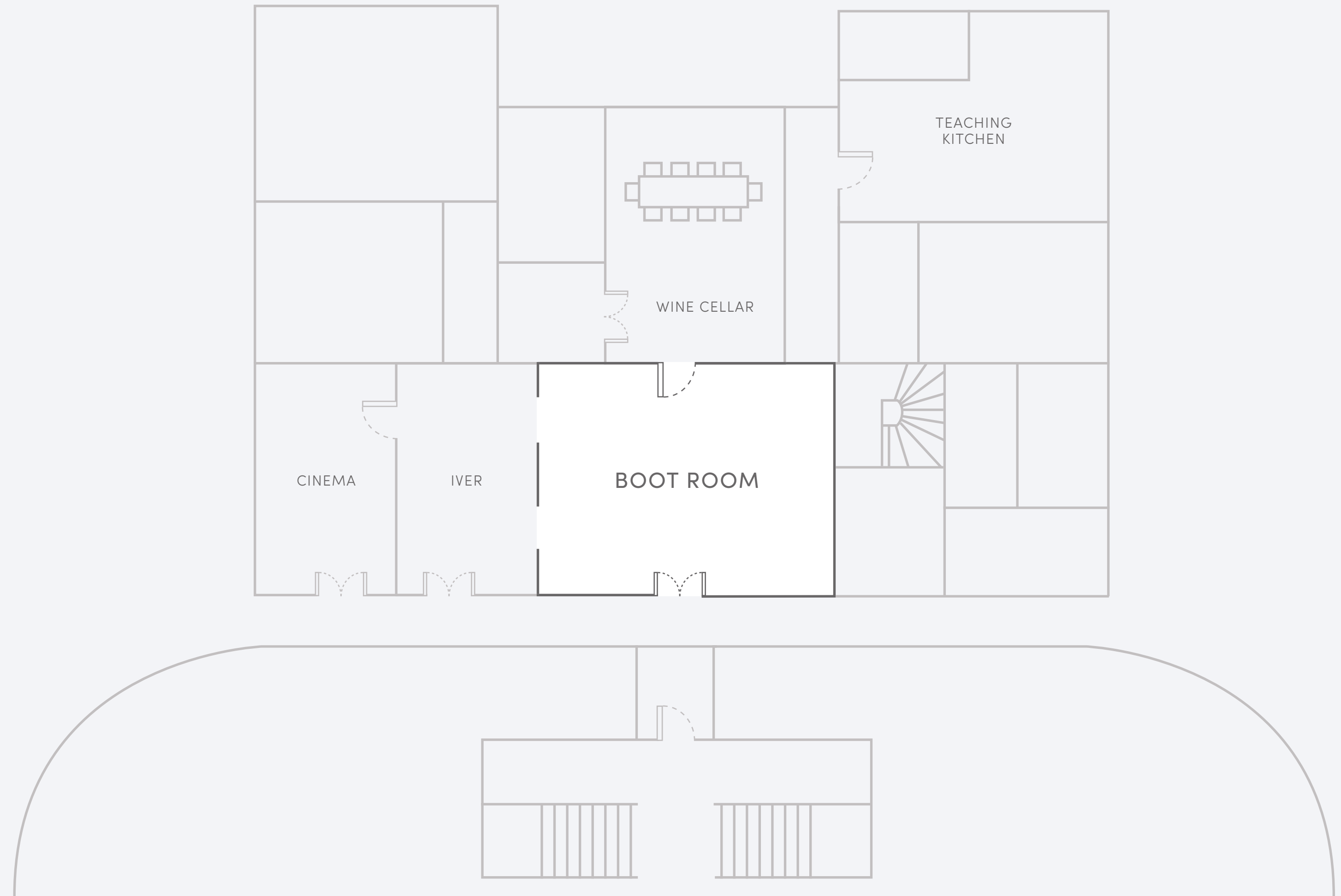
BOOT ROOM

LOWER GROUND FLOOR

DIMENSIONS		m
LENGTH		8.9
WIDTH		6.5
TOTAL AREA (m ²)		56.67

RATES		£
FULL DAY		850
EVENING		600

SETUP		Max Capacity
ROUNDS		32
RECEPTION		40



IVER

LOWER GROUND FLOOR

DIMENSIONS		m
LENGTH		5.7
WIDTH		3.9
TOTAL AREA (m ²)		22.92

RATES		£
FULL DAY		400
EVENING		300

SETUP	Max Capacity
BOARDROOM	10
RECEPTION	20





CINEMA

Close to the Boot Room, on the lower ground floor, the cinema boasts the latest equipment for watching a movie in comfort.

Facilities include an 89 inch 4k television screen, with 7.1 surround sound. Offering a full sky package, Apple TV, Bluray and a Netflix facility available for guests to use their own account.

Available for hire a perfect space to enjoy a film with your family, friends or colleagues. Six luxurious individual chairs provide the ultimate in luxury, fully air conditioned and with a menu for light refreshments available. For reservations, our reception team are on hand to discuss requirements.



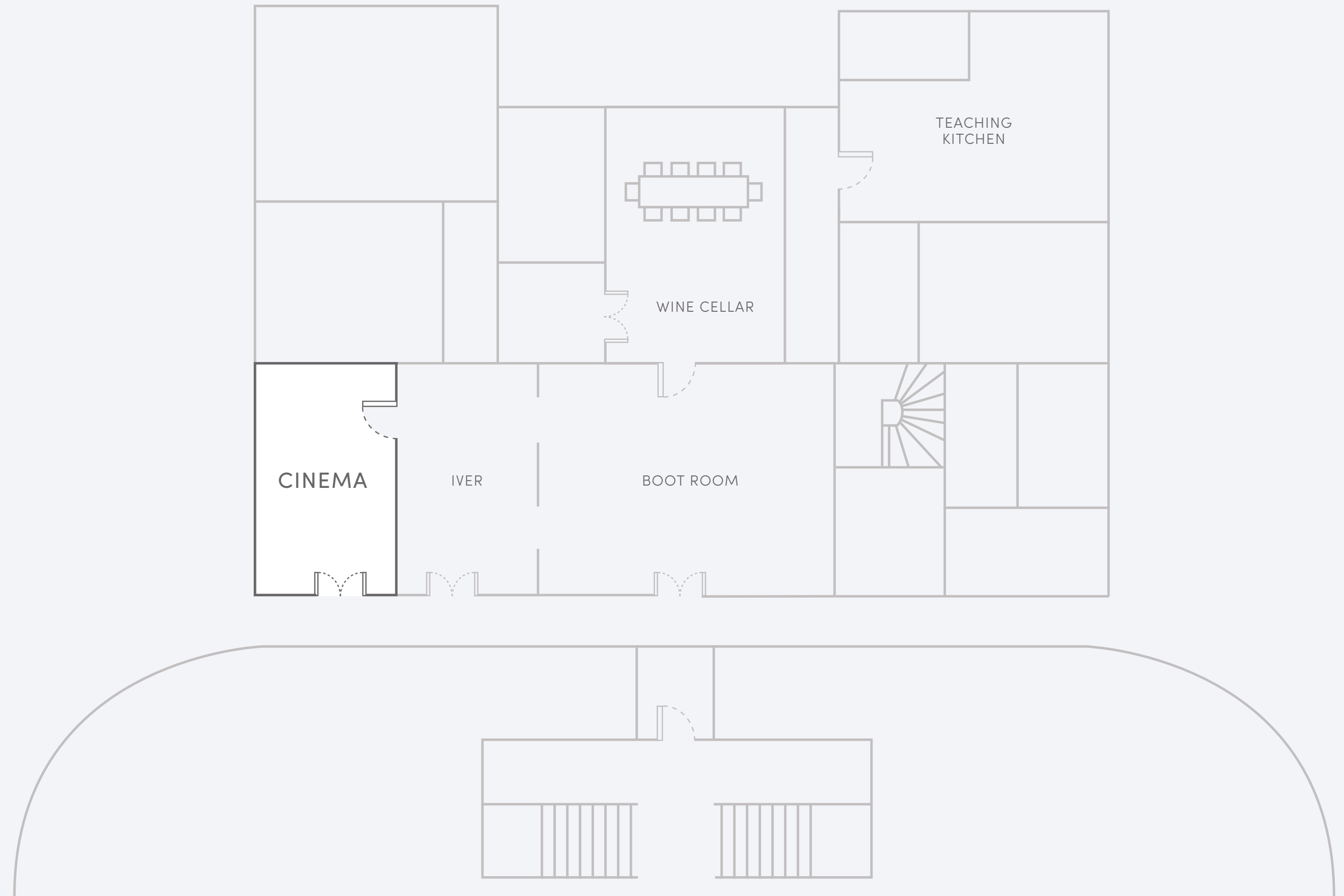
CINEMA

LOWER GROUND FLOOR

DIMENSIONS		m
LENGTH		7
WIDTH		3
TOTAL AREA (m ²)		21

RATES		£
PER 3HR HIRE SESSION		100

SETUP		Max Capacity
CINEMA		6





WINE CELLAR

Located on the lower ground floor near the teaching kitchen, the original cellar for the house has been transformed into an intimate dining space for up to 10 guests. With original features, it also makes a perfect space for wine tastings with friends, family or colleagues.



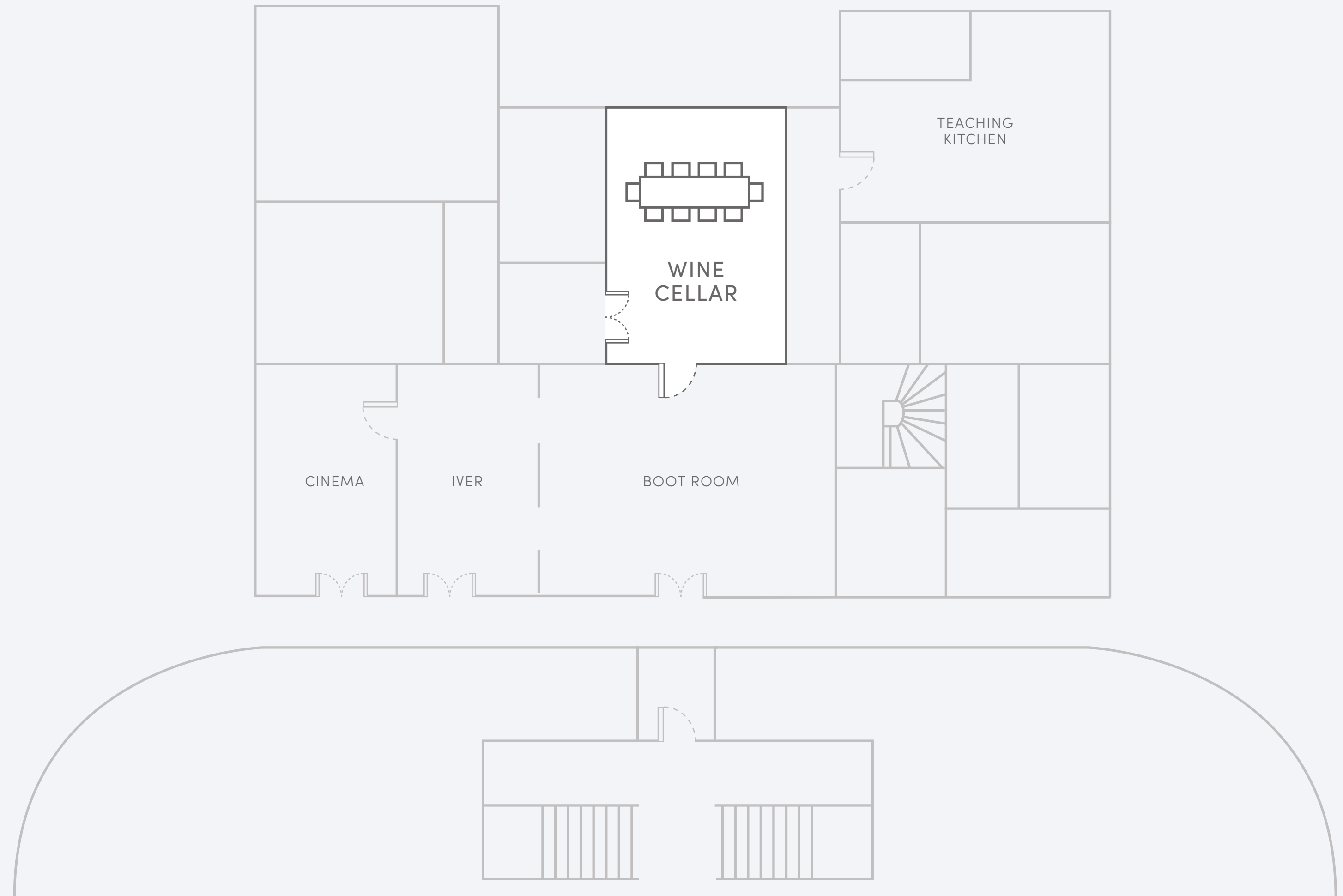
WINE CELLAR

LOWER GROUND FLOOR

DIMENSIONS		m
LENGTH		5
WIDTH		3.5
TOTAL AREA (m ²)		17.5

RATES		£
FULL DAY		N/A
HALF DAY (Mon–Fri)		N/A
HALF DAY (Sat–Sun)		400
EVENING		500

SETUP		Max Capacity
LONG TABLE		10





THE LANGLEY
a Luxury Collection Hotel,
Buckinghamshire

Avenue Drive,
Uxbridge Road, Iver
England, SL3 6DU
United Kingdom



@TheLangleyUK

www.thelangley.com

THE LUXURY COLLECTION HOTELS & RESORTS



CONTACT

Our dedicated meetings and events team are on hand to discuss your requirements. If your event needs more than just the venue, from table decorations, to playing a game of polo or hanging from the trees at Go Ape in nearby Black Park, we have the ultimate list of trusted and valued suppliers who will provide options for a wide range of activities and added extras. Details of their services can be provided on request.

Please contact: events@thelangley.com | +44 20 7236 3636