



THE
LONDON
EDITION®

Located in central London's Fitzrovia, The London EDITION brings together, in a delicate balancing act, the integrity and character of a historic building with a simple, sophisticated design sensibility, creating a seamless blend of charisma and ease. With 173 rooms, Berners Tavern restaurant by Michelin-starred chef Jason Atherton, three bars, a private event space, meeting rooms and a buzzing lobby, the hotel offers a dynamic social hub where guests and visitors can work, relax, socialise and dine.

“ONCE AGAIN UPPING
THE GAME”

Wallpaper

“JAW-DROPPINGLY
BEAUTIFUL”

Metro UK

“A UNIQUE BRAND
OF COOL”

London Sunday Times

“HIGH-OCTANE
GLAMOUR”

Vogue, UK

“REACHING NEW
HEIGHTS”

London Sunday Times

“NEXT BIG IDEA”

The Independent

“DEFINING THE
DECADE”

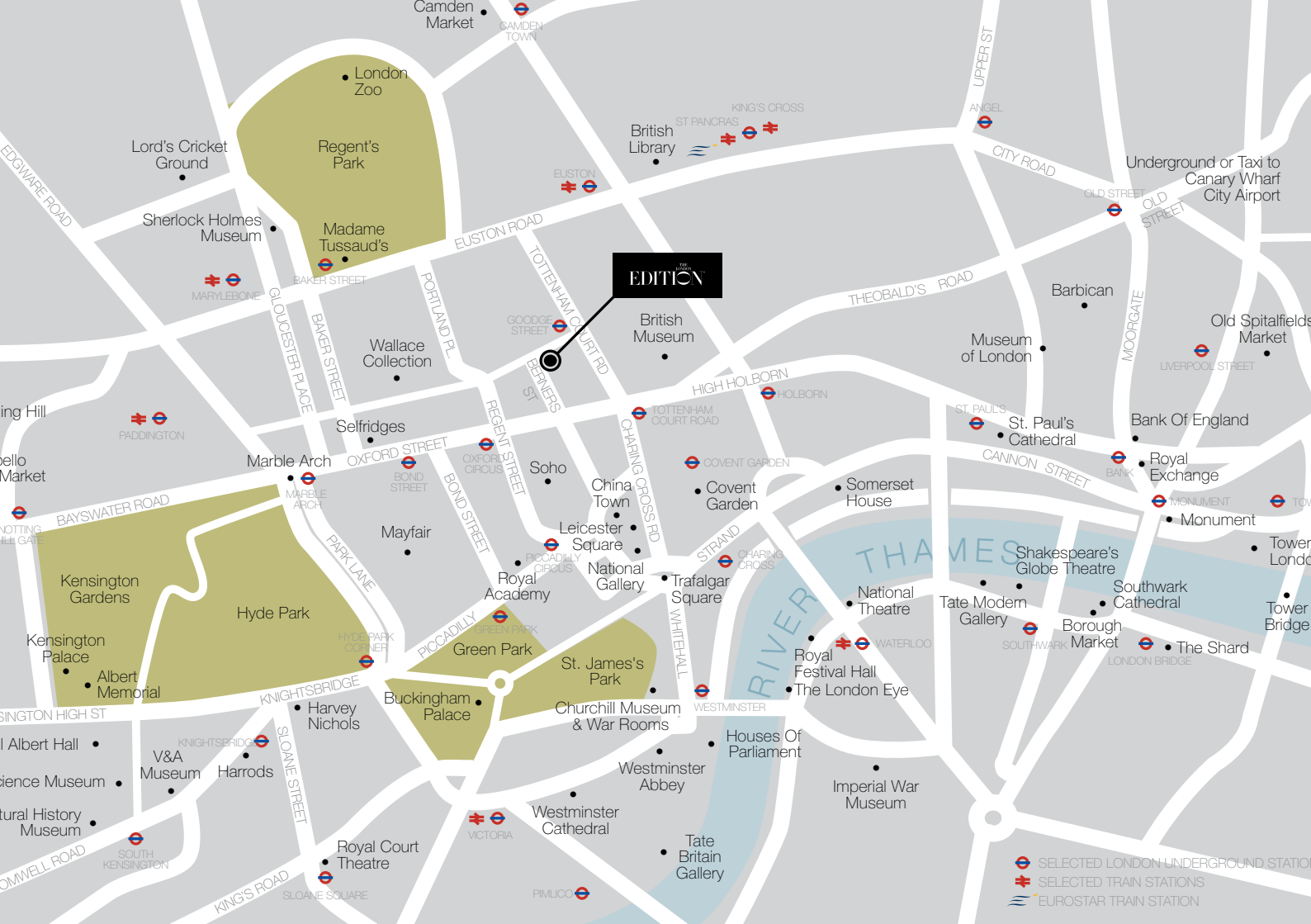
Metro UK

“ZEITGEISTY”

The Economist

“THE BEST”

London Evening Standard



EDITION

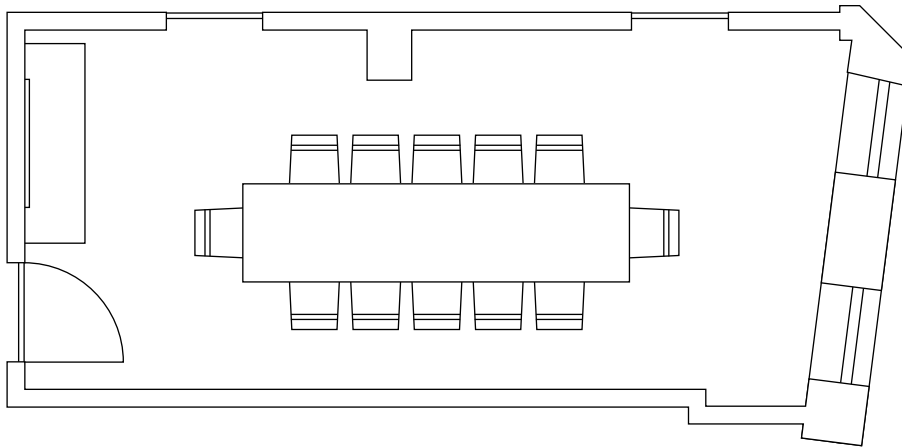
-  SELECTED LONDON UNDERGROUND STATION
-  SELECTED TRAIN STATIONS
-  EUROSTAR TRAIN STATION



THE LONDON EDITION[®]

STUDIO 1

A boardroom set up, Studio 1 is perfect for meetings, private lunches and intimate dinners.



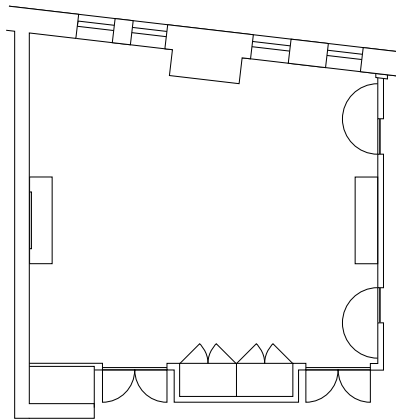
11.15 x 25.59 x 8.53, 285.32 Square Feet
3.4 x 7.8 x 2.6, 25.5 Square Metres
Capacity: 12



THE LONDON EDITION[®]

STUDIO 2

Studio 2 is extremely versatile and can accommodate a variety of set-ups tailored specifically for each individual event.



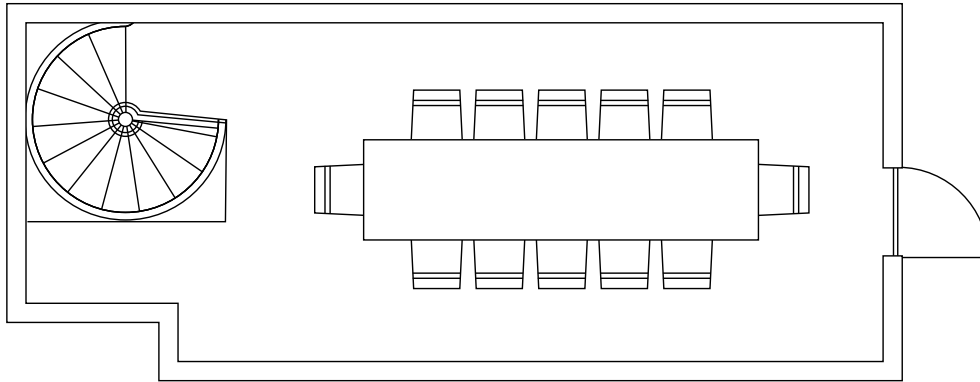
24.6 x 29.85 x 8.53, 734.31 Square Feet
7.5 x 9.1 x 2.6, 68.25 Square Metres
Reception: 80, Banquet: 40, Theatre: 60,
Boardroom: 26, Classroom: 36, U-Shape: 30



THE LONDON EDITION[®]

PRIVATE DINING ROOM

Located above Berners Tavern, the Private Dining Room is an intimate space, ideal for exclusive VIP dining and meetings. The modern, long dark walnut table with rose upholstered chairs sits under an original historic skylight with custom lighting.



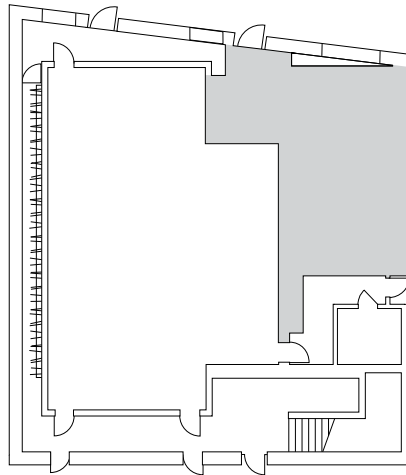
23 x 12, 276 Square Feet
7 x 3.5, 24.5 Square Metres
Capacity: 14



THE LONDON EDITION[®]

BASEMENT

This eclectic venue features custom lighting by Patrick Woodroffe, a full bar and state-of-the-art sound system, making it ideal for receptions, film screenings, fashion shows, product launches and play backs.



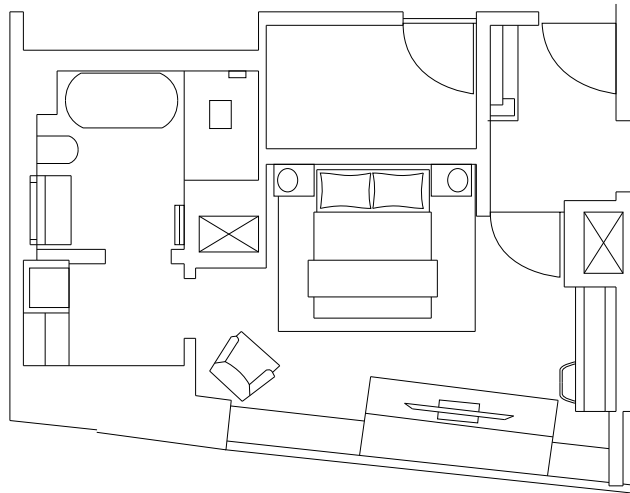
23.3 x 49.8 x 9.1, 1160.34 Square Feet
7.1 x 15.2 x 2.7, 107.92 Square Metres
Reception: 220, Banquet: 60, Theatre: 80, Boardroom: 30



THE LONDON EDITION[®]

LOFT SUITE

Features open plan sitting area and multiple windows. Ideal for photoshoots, interviews and press events.



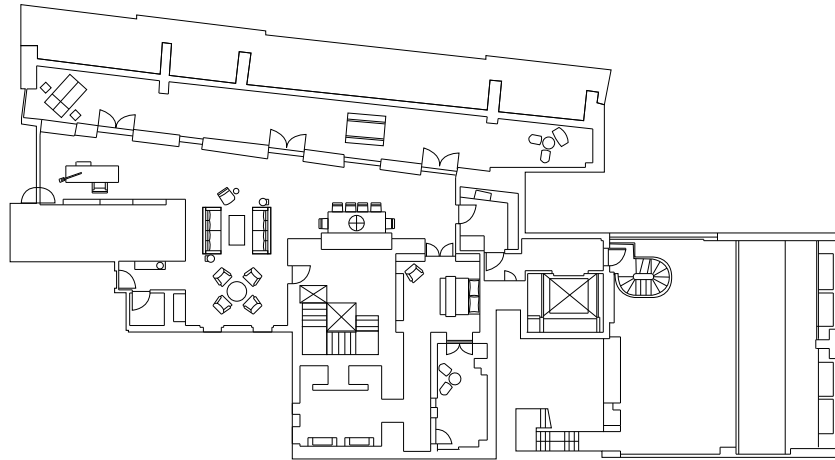
516 Square Feet / 48 Square Metres
Reception: 10, Boardroom: 6



THE LONDON EDITION[®]

PENTHOUSE

The custom furnished Penthouse with its expansive wraparound landscaped terrace and 360-degree views of London, forms a luxury apartment featuring its own private dining room, full kitchen and living room. Ideal for welcoming guests or simply enjoying an expansive sense of privacy, the Penthouse offers a unique one-of-a-kind retreat.



2098 Square Feet / 195 Square Metres
Reception: 50, Banquet: 20, Boardroom: 10



THE
LONDON
EDITION®

PUNCH ROOM

Nestled at the back of the hotel is the Punch Room, a fumed-oak paneled den inspired by the comfort of manor house libraries and nineteenth-century private clubs.

The room features custom tufted banquettes in teal velvet, overstuffed mint green leather tub chairs and dark brown leather club chairs.

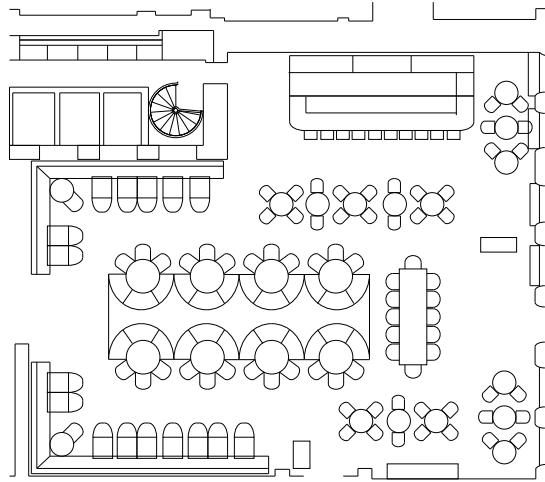
Available daily until 5pm, Punch Room is ideal for welcome receptions and press interviews.

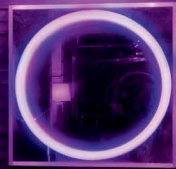


THE
LONDON
EDITION®

BERNERS TAVERN

Berners Tavern at The London EDITION is a new kind of gathering place for all day dining and entertaining, breakfast, lunch, dinner, tea and late supper. Under the direction of London's own Michelin-starred Executive Chef Jason Atherton, this gastronomic gem offers a contemporary British menu that is simple yet elegant and features the very best produce that the British Isles has to offer.





THE
LONDON
EDITION®

For private breakfasts, lunches and dinner reservations in the Private Dining Room,
please contact Berners Tavern at bernerstavern@editionhotels.com or +44 (0) 207 908 7979

For Meetings and Special Events in all other event spaces please call +44 (0) 207 908 7915
or email events.london@editionhotels.com

WWW.EDITIONHOTELS.COM
10 BERNERS STREET LONDON, W1T 3NP, UNITED KINGDOM
PHONE +44 (0) 207 781 0000 FAX +44 (0) 207 781 0100

THE
LONDON
EDITION[®]

MEETING STUDIOS	SQ. FT	DIMENSIONS FEET	SQ. MTRS	DIMENSIONS METRES	RECEPTION	BANQUET	THEATER SEATING	BOARD ROOM SEATING	CLASS ROOM SEATING	U-SHAPED SEATING
STUDIO 1	286	11.15 x 25.59 x 8.53	25.5	3.4 X 7.8 X 2.6	-	-	-	12	-	-
STUDIO 2	735	24.6 x 29.85 x 8.53	68.25	7.5 X 9.1 X 2.6	80	40	60	26	36	30
PRIVATE DINING ROOM	276	23 x 12	24.5	7 x 3.5	-	14	-	14	-	0
BASEMENT	1161	23.3 X 49.8 X 9.1	107.92	7.1 X 15.2 X 2.7	220	60	80	30	-	-
LOFT SUITE	516	-	48	-	10	-	-	6	-	-
PENTHOUSE	2098	-	195	-	50	20	-	20	-	-

THE
LONDON
EDITION®