

A LUXURIOUS DESTINATION UNDER ONE ROOF

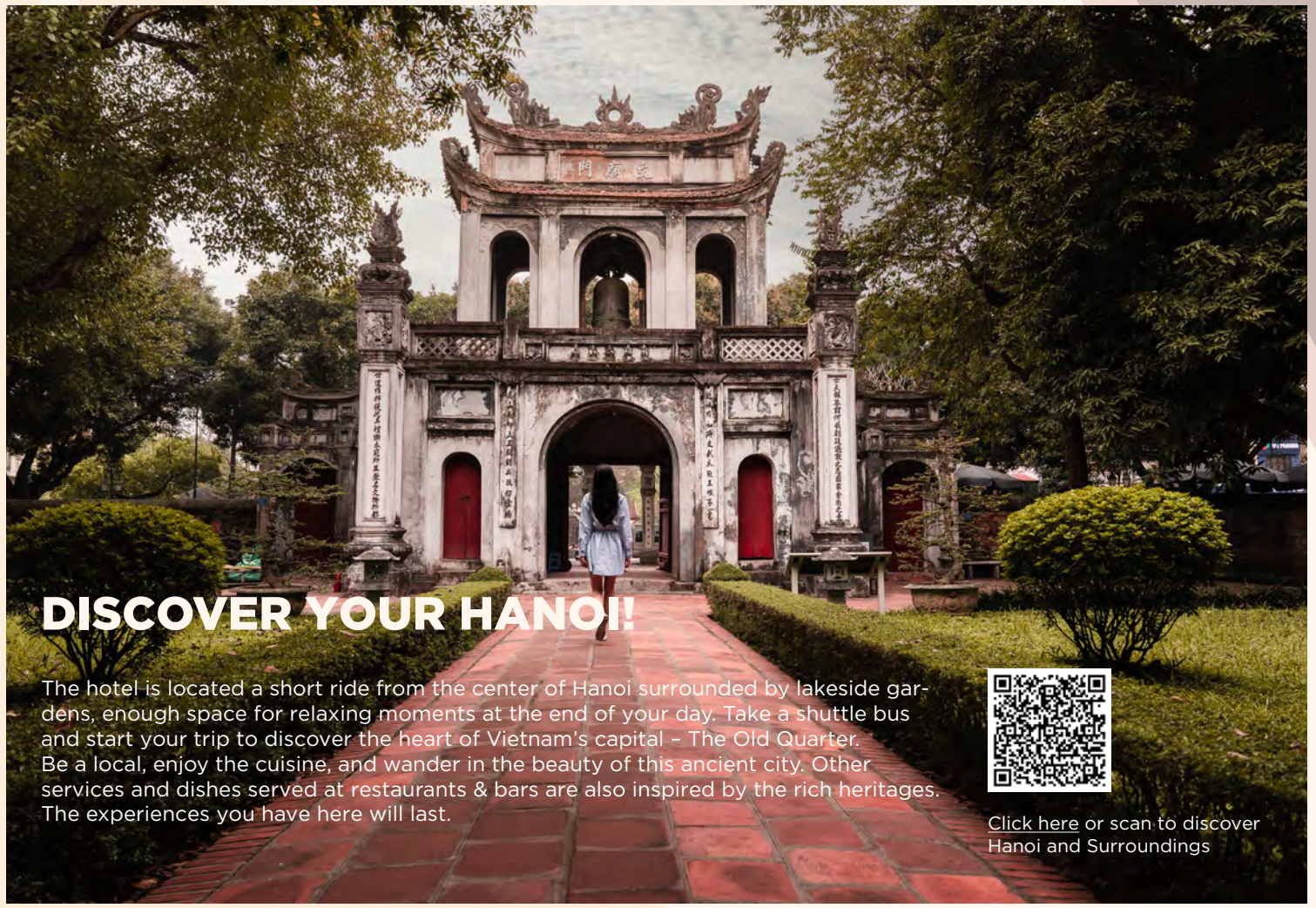


Rising high above Hanoi's new Central Business District and adjacent to Vietnam National Convention Center, JW Marriott Hanoi is an inspiring destination in the center of it all.

The hotel design was inspired by the mythological legend of the dragon and mimics the magnificent coastline of Vietnam creating an impressive sense of arrival for all those that visit.

Arriving at our hotel, you immediately begin to rediscover your sense of presence and mindfulness amidst the setting of tropical greenery and stunning lakeside gardens. Located in the new business district of the city, the hotel welcomes you with newly suites combining traditional with five-star hotel luxury. Indulge your senses in our 9 restaurants and bars or nourish your soul at Spa By JW with massages and luxury wellness therapies. Artful indoor and outdoor venues designed to foster connections make for the perfect destination wedding or meetings.





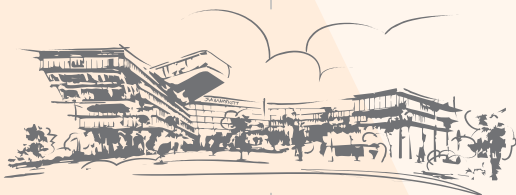
DISCOVER YOUR HANOI!!

The hotel is located a short ride from the center of Hanoi surrounded by lakeside gardens, enough space for relaxing moments at the end of your day. Take a shuttle bus and start your trip to discover the heart of Vietnam's capital - The Old Quarter. Be a local, enjoy the cuisine, and wander in the beauty of this ancient city. Other services and dishes served at restaurants & bars are also inspired by the rich heritages. The experiences you have here will last.



Click here or scan to discover Hanoi and Surroundings

DESTINATIONS FROM THE HOTEL



NOI BAI INTERNATIONAL AIRPORT:
26.7 km - 45 mins



OLD QUARTER /DOWNTOWN:
10 km - 30 mins



VIETNAM NATIONAL CONVENTION:
Center Adjoining the hotel



THE GARDEN SHOPPING CENTER:
2.7 km - 8 mins



HANOI RAILWAY STATION:
9.1 km - 30 mins



MY DINH NATIONAL STADIUM:
2.7 km - 6 mins

A woman with glasses and a black blazer over a white shirt is smiling and talking to a man in a blue suit and glasses. They are standing at a buffet table with various dishes. In the background, a waiter in a white shirt is visible, and there are potted plants and framed art on the wall.

PLANNING A PERFECT EVENT WITH US!

Our luxurious hotel offers artful and inspired spaces, both indoor and outdoor, that accommodates all types of business and social events - from conferences and product launches to large-scale weddings and more intimate social celebrations. Our meeting spaces are designed for delegates to gather with intention, meet with purpose and foster meaningful connections. For all fresco engagements and wedding celebrations there's simply nothing that compares with our gardens with stunning backdrop of the shimmering lakeside.



The hotel has a large range of meeting space including two newly refurbished ballrooms with the latest technology all located on one floor.



- 17 MEETINGS ROOMS
- 2 BALLROOMS
- THE STUDIO - 6 BOARDROOMS SET AROUND SOCIALABLE LIVING ROOM AREA



- 2,400 SQUARE METERS OF FLEXIBLE MEETING AREA
- 2,600 SQUARE METERS OF PRE-FUNCTION AREA

	Dimensions			Capacity	
	L x W (m)	Height (m)	Sq.m.	Boardroom Set	
Song Cau	8.0 x 6.5	4.5	52	12	
Song Chay	Angled	4.5	55	12	
Song Da	Angled	4.5	51	12	
Song Hong	4.5 x 8.5	4.5	39	12	
Song Lo	7.0 x 8.0	4.5	55	12	
Song Ma	5.5 x 8.5	4.5	45	12	
Song Duong	Angled	4.5	55	12	

	Dimensions		Capacity				
	L x W x H (m)	Sq.m.	Theater	Classroom	U-Shape	Banquet	Reception
Grand Ballroom	22.0 x 45.5 x 7	1000	950	540	-	700	900
Grand Ballroom I	22.0 x 16.5 x 7	363	260	168	72	200	300
Grand Ballroom II	22.0 x 12.5 x 7	274	180	135	63	150	250
Grand Ballroom III	22.0 x 16.5 x 7	363	260	168	72	200	300
Fansipan Ballroom	15.8 x 30.5 x 7	480	378	210	78	300	450
Fansipan I	15.8 x 11.7 x 7	185	150	45	33	100	150
Fansipan II	15.8 x 11.7 x 7	185	150	45	33	100	150
Fansipan III	15.8 x 7.1 x 7	110	70	24	30	50	100
Ho Tay 3	12.3 x 26.0 x 6.5	320	220	108	30	200	290
Ho Tay	12.3 x 9.0 x 6.5	110	70	30	30	40	120
Truc Bach	12.3 x 9.0 x 6.5	110	70	30	30	40	120
Thien Quang	12.3 x 8.1 x 6.5	100	70	30	30	40	120
Hoan Kiem	12.3 x 8.1 x 6.5	100	70	30	30	40	120



THE STUDIO

- Ideal for Senior Leader events, business reviews and strategic planning sessions.
- 6 comfortable rooms with LCD panels and seating for up to 12.
- Surrounding a central living room style with an adjoining kitchen for themed breaks and cooking classes.
- Book it all and have 352 sqm. of secure and flexible work space to plan for your future success.



THANG LONG TUNNEL

A total new experience for your meeting breaks and receptions. Be inspired by the Vietnamese folklore of Lac Long Quan & Au Co and the most stunning locations from North to South of Vietnam, Thang Long Tunnel is an explosion of authentic colors welcoming guests to Hanoi.



TEA AND COFFEE BREAK

JW Marriott Hanoi offers a diverse selection of tea and coffee break, ensuring a time of relaxation and connection for all attendees.



A modern hotel suite with a living area, dining table, and a view of a city skyline. The room features a large window with a view of a city skyline, a wooden desk with a chair, a sofa, and a leather armchair. A television is mounted on a wood-paneled wall. A doorway on the left leads to a bedroom with a bed and a nightstand. The ceiling has recessed lighting.

ROOMS & SUITES

With an exquisite design, our rooms and suites are the perfect space for you to relax after a long day. Soak in stunning views of the city or the lake with panoramic floor-to-ceiling windows. Our beds feature luxurious linen with the highest thread counts ensuring the most comfortable night's sleep. High-speed Internet, mini-bar, and other services are tailored to your needs.

The hotel features 450 spacious and elegant bedrooms with superior amenities, catering to all needs with a team of devoted associates delivering elevated services across the hotel.

- 2 Accessible Lake King
- 293 Deluxe Rooms: 48 sq.m
- 92 Executive Rooms: 48 sq.m
- 7 Balcony Rooms: 48 sq.m
- 20 Deluxe Suites: 65 sq.m
- 24 Executive Suites: 90 sq.m
- 2 Balcony Suites: 90 sq.m
- 1 Family Suite: 110 sq.m
- 6 Grand Suites: 120 sq.m (R 682, R 592, R 590, R 296, R 247), 150 sq.m (R 602)
- 2 Chairman Suite: 250 sq.m (R 399, R 601)
- 1 Presidential Suite: 320 sq.m (R 501)
- 18 Connecting Rooms



ROOM AMENITIES

- Wired and wireless internet
- Desk, writing/work, with ergonomic chair, and electrical outlet
- In-room laptop safe
- LED TV from 48inch in living room
- Bose IPOD docking station with radio
- Luxurious Bathrobes
- International cable/satellite TV channels
- Tea & Coffee Service
- Upgraded Mini-Bar
- Hide away luggage compartment
- Aromatherapy bath amenities
- Mini fridge
- Iron and ironing board
- 2 phones: cordless phone, voicemail, speaker phone, and phone lines
- Complimentary bottled water
- Plug-in, high-tech room



GUEST SERVICES

- Twice daily room refresh
- 'At Your Service' personalized service to assist you around the clock.
- 24 hour in-room dining
- 24 hour concierge services
- Business services at Executive Lounge
- Restaurant & Wellbeing On 8 Concierge Desk
- Dry cleaning and laundry
- Chauffeur-driven transportation services (charges apply)
- 24 hour Fitness center
- Group Check-in available
- Guest Mobile Check-in
- Guest shuttle services to the city
- Evening turndown service



Upgrade your stay and indulge in refined living with our collection of Suites that go above and beyond, with spacious layouts, personalized touches and elevated experiences delivered by our dedicated team.

- Welcome Gift
- Executive Lounge Access
- Early Check-in and Late Check-out
- Choose from Classic or Premium Minibars
- In-suite Afternoon Tea Set
- JW Butler Service Available
- Pillow Menu
- Complimentary Shoe Shine
- Bath Salts

And more

NEWLY UPGRADED SUITES



EXECUTIVE LOUNGE

A place for you to unwind and relax while being with us. Our Executive Lounge is located on the 6th floor with ample space with 2 meeting rooms for up to 20 guests.

Continental breakfast, afternoon tea, evening cocktails, and Hors d'oeuvre are served daily with rolling tea, coffee and soft drinks throughout the day, along with printing and shoe shine services available.

Executive Lounge benefits are extended to those guests using Executive or Suite rooms or Marriott Bonvoy Platinum level and above.

- Opening hours:
6:00 a.m. – 11:30 p.m. everyday



BRINGING THE WORLD OF CUISINE TO HANOI

Our restaurants and bars offer a range of culinary choices, from international cuisine to local specialties, catering to a diverse range of tastes and preferences. The presence of top chefs with endless talent and culinary inspiration is the premise for our restaurants and bars to make your cuisine journey special.





- Award-winning international buffet with 7 food stations featuring authentic cuisine from Vietnam, China, Japan, Korea, India, Italy and Mediterranean.
- Seating for over 250 guests overlooking the lake.
- Great venue for your group lunch and or dinner.
- Open daily
- A la Carte menu also served:
6:00 a.m. - 9:30 p.m.
- Breakfast: 5:45 a.m. - 10:00 a.m. (Mon - Fri);
5:45 a.m. - 10:30 a.m. (Sat - Sun)
- Lunch: 11:30 a.m. - 2:30 p.m.
- Sunday Brunch: 12:00 p.m. - 2:30 p.m.
- Dinner: 6:00 p.m. - 9:30 p.m.



- Modern French Cuisine specializing in grilled meats and classic French deserts.
- Capacity main dining: 82 guests
- Red Room - Private dining for 20 guests
- Bordeaux Room - Private dining for 15 guests
Champagne and Burgundy Rooms - semi private dining while still being able to enjoy the ambiance of the dining room.
- Open daily: Dinner: 6:00 p.m. - 10:30 p.m.
- Sunday Lunch - Théâtre a la table:
11:30 a.m. - 2:30 p.m.



- Contemporary Cantonese serving modern Chinese food with classic ingredients, specializing in wood-fired duck and dim sum.
- Seating for up to 134 guests with additional outdoor balcony seating with lakeside views.
- 5 private dining rooms seating up to 14 guests with private verandas overlooking the lake
- Open daily
- Lunch: 11:30 a.m. – 2:00 p.m. (Mon - Fri); 11:30 a.m. – 2:30 p.m. (Sat - Sun)
- Dinner: 5:30 p.m. – 9:00 p.m.



- Champagne bar with elegant champagne and fine sturgeon caviar for intimate dates
- Seating for up to 56 guests
- A great venue to experience a wide range of sparkling champagnes by bottles or simply by the glass together with beautiful canapés
- Open daily
- Dinner: 6:00 p.m. – 10:30 p.m.
- Sunday Lunch: 11:30 a.m. – 2:30 p.m.



- Modern Japanese Restaurant & Bar articulating creativity in culinary and connecting experiences through cuisine.
- Seating for up to 56 guests
- Award-winning design with 6 private dining rooms with linked rooms up to 20 guests
- Open daily
- Lunch: 11:30 a.m. – 2:30 p.m.
- Dinner: 5:30 p.m. - 9:30 p.m.
- Bar & Terrace (serving 'Robatayaki' grilling skewers and drinks): 5:30 p.m. - 11:00 p.m.



- Cozy home from home setting serving signature tea, coffee
- International and local cuisines
- Afternoon Tea: 2:00 p.m. – 5:00 p.m.
- Capacity: 130 seats
- Open daily: 7:00 a.m. – 10:30 p.m.



- 1920s inspired Jazz Club
- Live performances each night with guest artists
- Signature cocktails and light bites
- Perfect for private occasions
- Capacity: 87 seats; cocktails event: 100 - 150 pax
- Open daily: 6:00 p.m. until late



- Focusing on dairy products and a menu of healthy and organic foods, suitable for many ages, your journey of discovery and experience at Wellbeing on 8 will be more complete with Milk & Co.
- Capacity: around 40 pax
- Open daily: 10:00 a.m. – 7:00 p.m.



From our table BBQs with a tent to Afternoon Tea in the Gazebo or a simple garden picnic to an extensive a la carte menu, the choice is yours, allowing you to enjoy the outdoors with your friends, family and colleagues.

- Open daily: 10:00 a.m. to 8:00 p.m.
(Subject to weather condition)



A WORLD OF WELLNESS AND RELAXATION

Wellbeing on 8 is an exclusive space located on the 8th floor of the hotel just for you to unwind and rejuvenate, away from the hustle and bustle of the city, you are able to indulge yourself in pure luxury.





SPA BY JW

- 9 private treatment rooms (including 2 double rooms with private Jacuzzi)
- 9 foot massage lounges
- Treatment products from Aromatherapy Associates & Dermafirm
- A wide selection of authentic Vietnamese and Asian treatments
- Open daily: 10:00 a.m. – 10:00 p.m.



SWIMMING POOL

- Located on the 8th floor showcasing dazzling sunsets
- The first and only suspended swimming pool in Vietnam
- Depth: 1.1m - 1.5m | Length x width: 28m x 5.5m
- Temperature: 28°C - 32°C
- Open daily: 6:00 a.m. – 10:00 p.m.



FITNESS CENTER

- Offering a wide variety of cardio and strength equipment with professional fitness & yoga instructors in an inspiring space with a city view from above
- Open 24 hours for in-house guests
- Member and outside guests:
6:00 a.m. – 10:00 p.m.



DRAGON'S VIEW

- The most unique space with the city view and hanging chairs
- A quite place to read your favorite book and relax



BUILDING A SUSTAINABLE FUTURE TOGETHER

We focus on green living and appreciate the very best nature can give us, this is key to our sustainability strategy.

The hotel puts every effort into minimizing our impact on the environment and we would like to invite you on our journey together.

[Click here](#) or scan to explore more





8 Do Duc Duc Rd., South Tu Liem, Hanoi
tel. (024) 3833-5588 www.jwmarriotthanoi.com  [jwmarriotthanoi](https://www.facebook.com/jwmarriotthanoi)  [jwmarriotthanoi](https://www.instagram.com/jwmarriotthanoi)