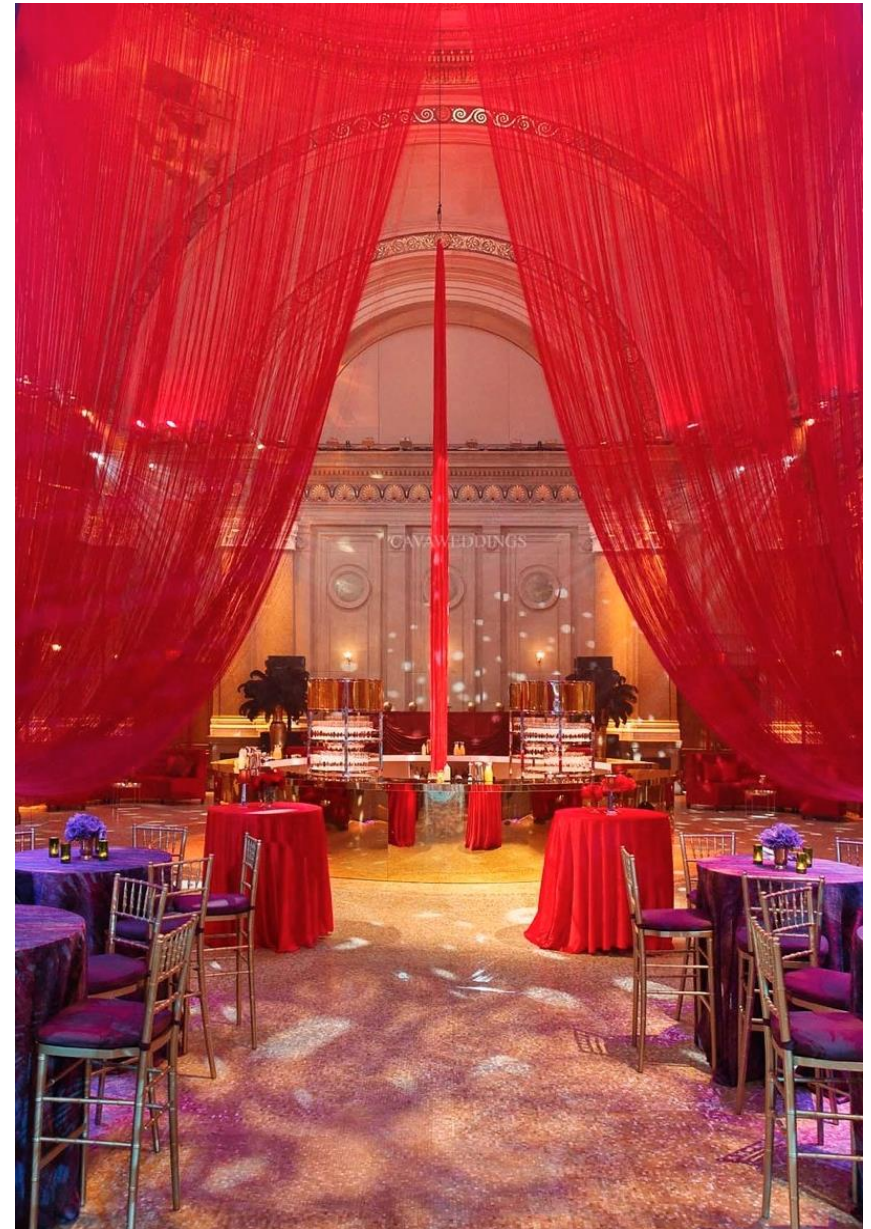
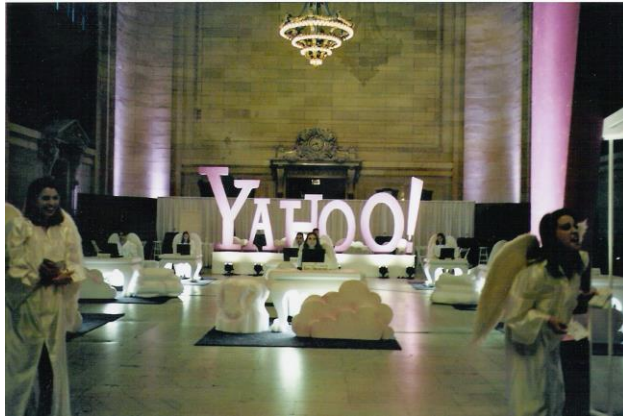


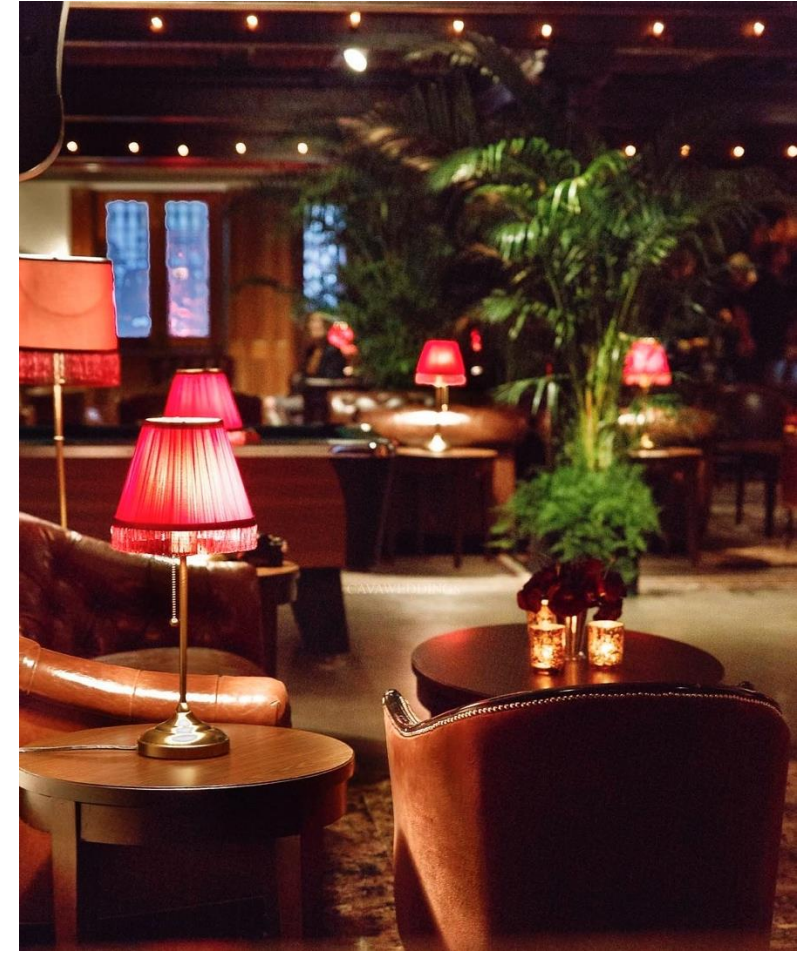
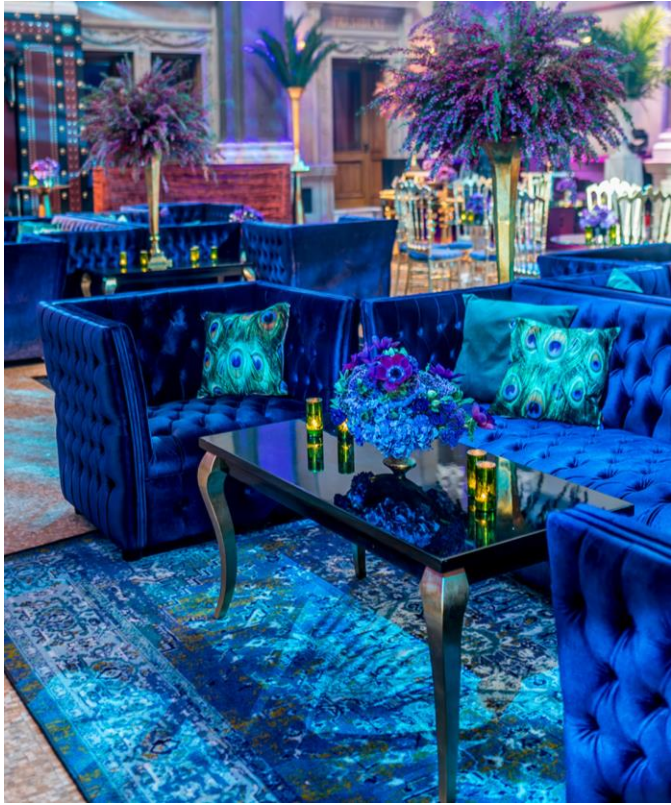


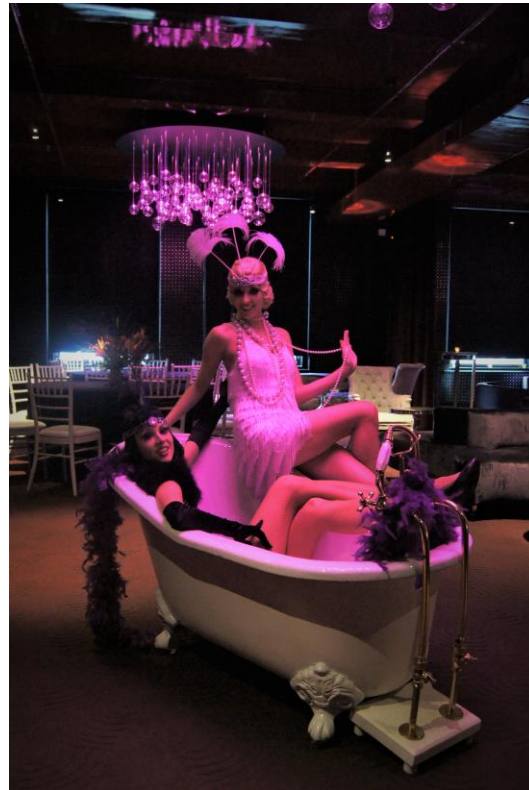
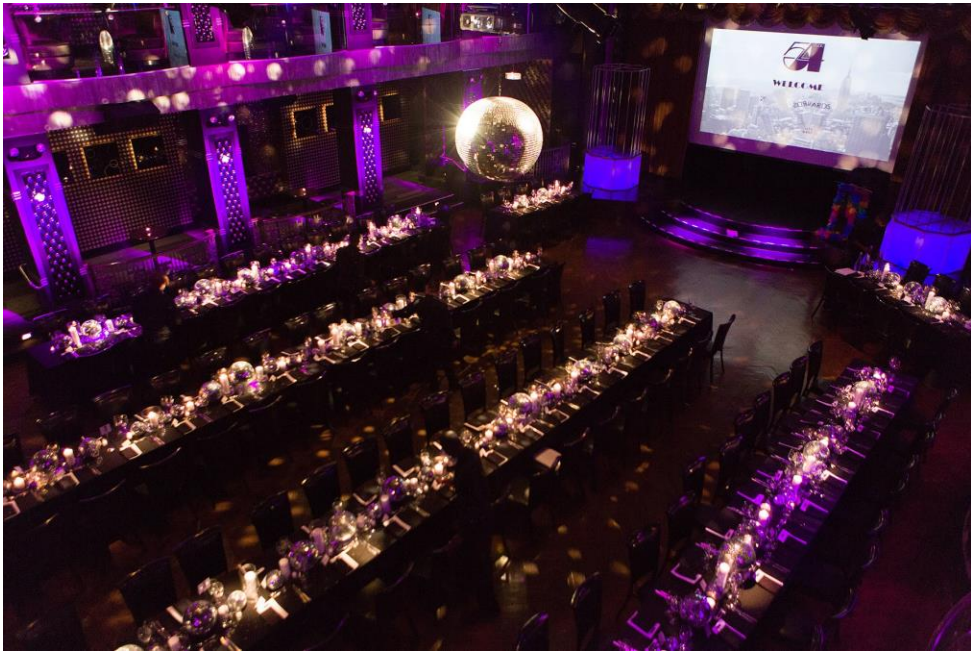
THE SHACKMAN GROUP



DÉCOR









ENTERTAINMENT







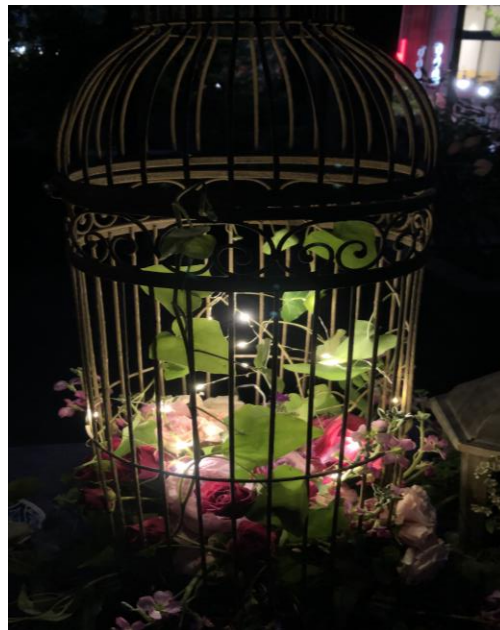




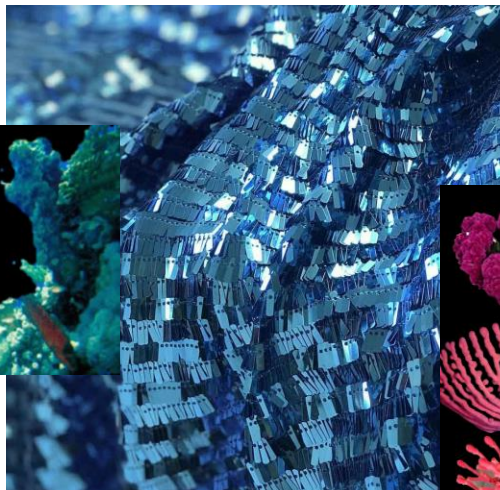
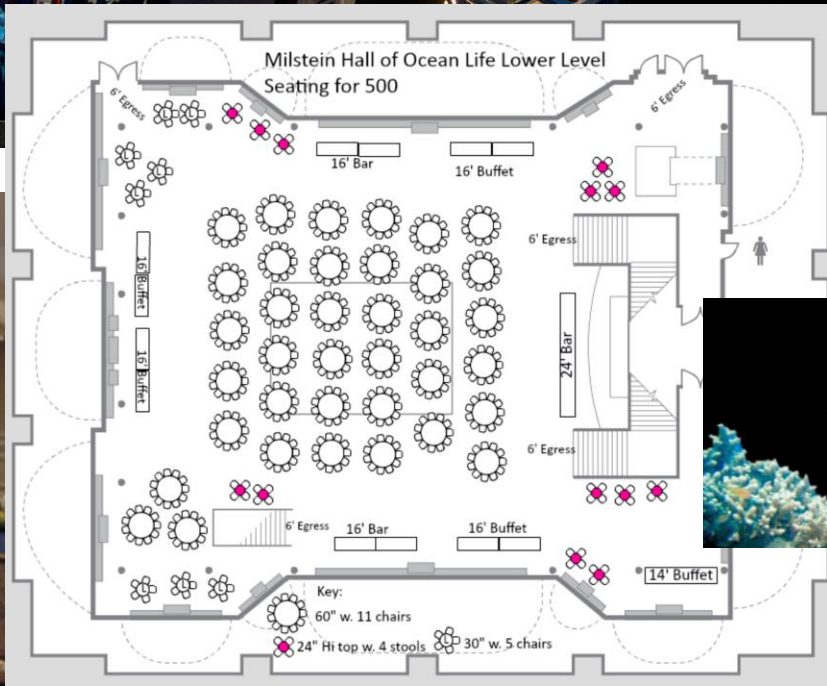
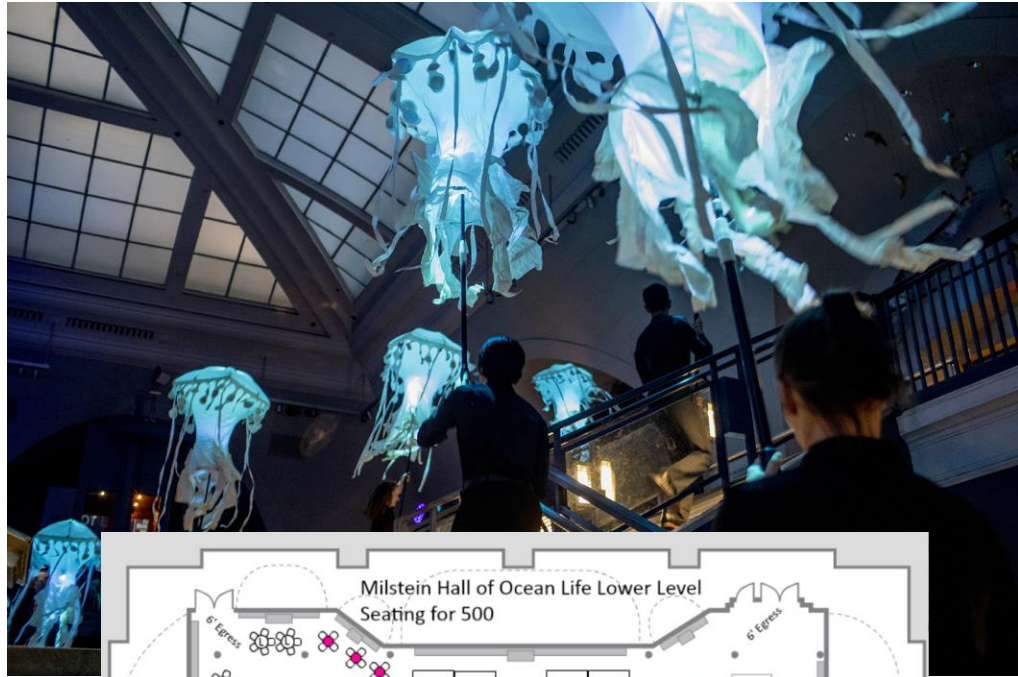
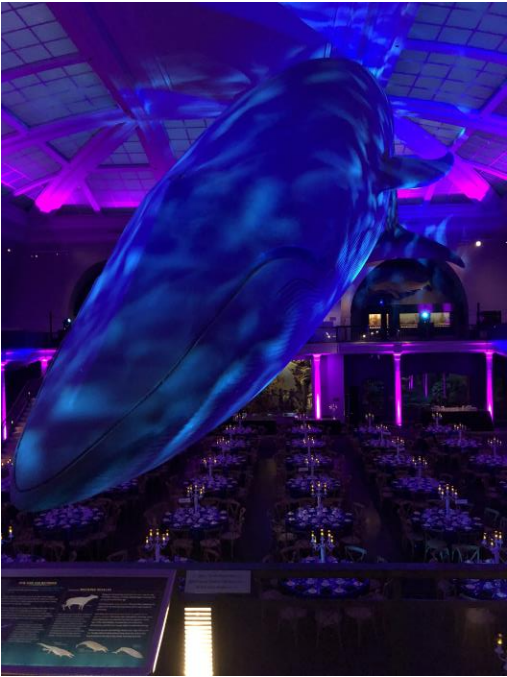


CENTERPIECES



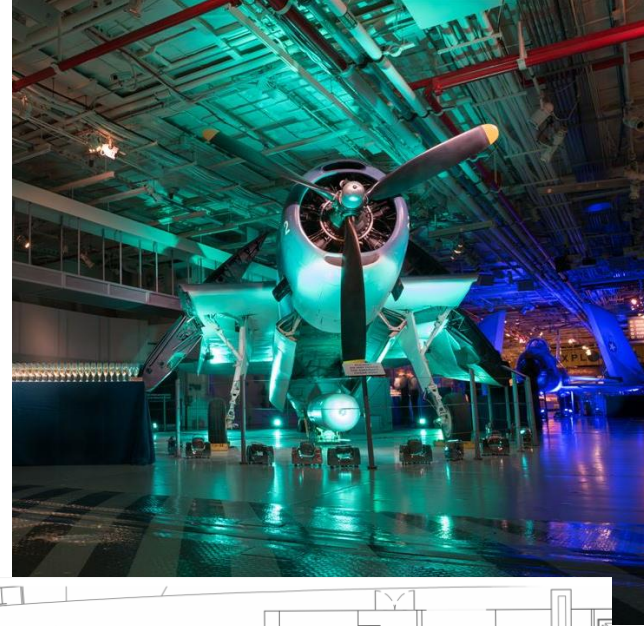


AT THE AMERICAN MUSEUM OF NATRAL HISTORY



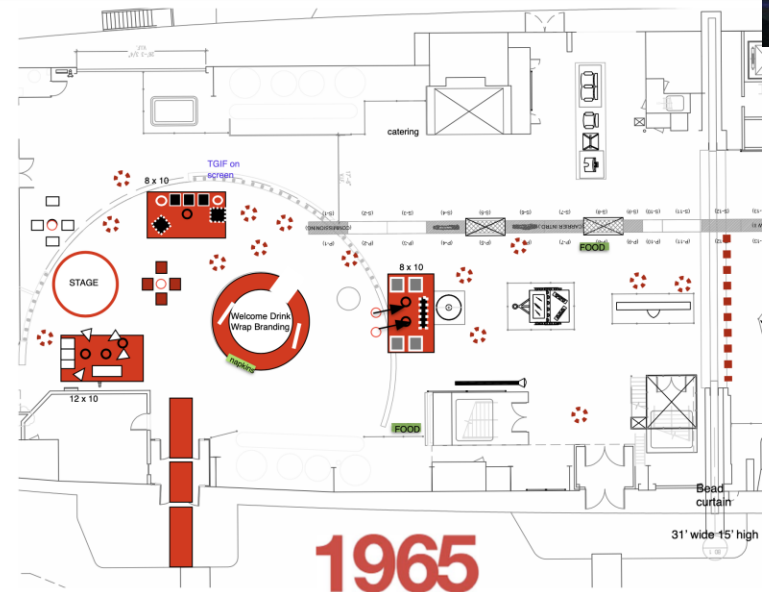
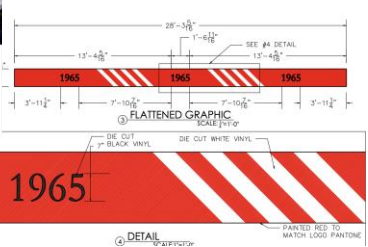
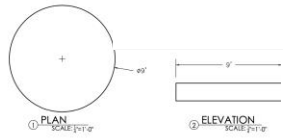
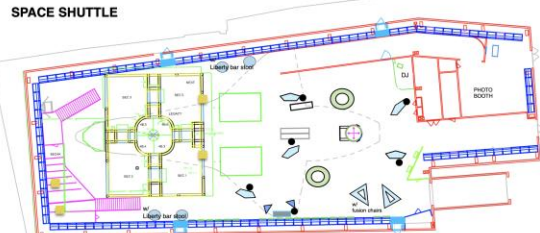
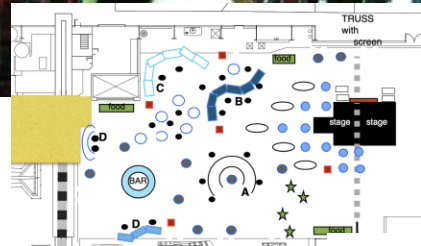
The Hall of Ocean Life

ON THE INTREPID



- 4 Sailors with costumes holding dog tags
- SUPREMES
- BEACH BOYS
- JEFFERSON BOYS
- Wrapped information desk/welcome drinks
- 4 TIP TOP SIDE TABLES black
- 2 TIP TOP SIDE TABLES white
- 4 TIP TOP SIDE TABLES clear
- 14 FLIP HIGHBOY WHITE
- 28 FLEX BAR STOOL, white (2 per)
- 7 BARCELONA CHAIR white
- 3 BARCELONA CHAIR black
- 4 BARCELONA CHAIR red
- 4 MAX CHAIR white
- 1 BEADED CURTAIN dead hung, red and white
- 4 PANTON CHAIR white
- 1 ASTON SOFA white
- 2 HUDSON chair black
- SOUND SYSTEM (4 mics)
- EXISTING LED WALL VIDEO (by SUYB)
- 1 STUDIO BENCH black/white piping
- 4 RANDOM LIGHT BALLS 43"
- 2 Existing screens with Friday's logo Est. 1965
- if circular stage wrapped 18" high
- Red Carpet at entrance
- Cocktail napkins on welcome desk
- 2 food stations. (Provided by caterer)

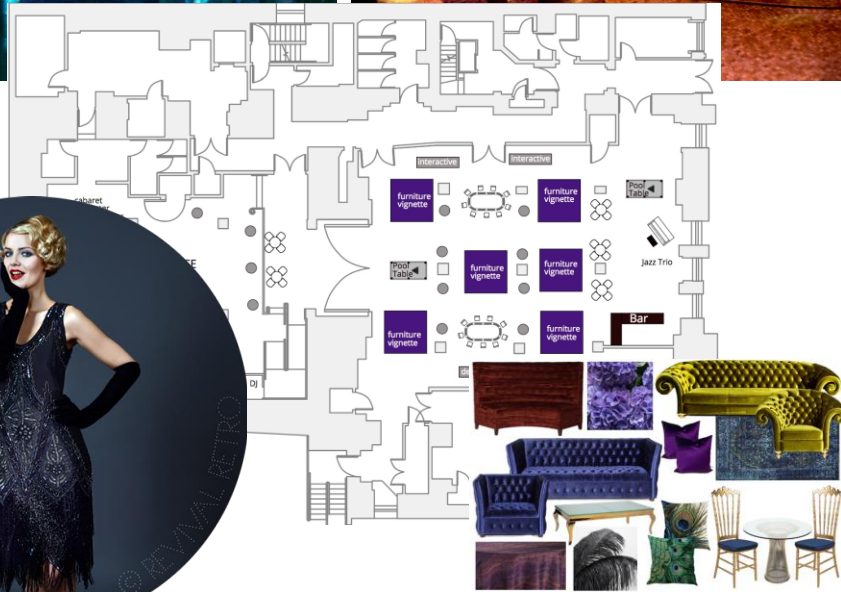
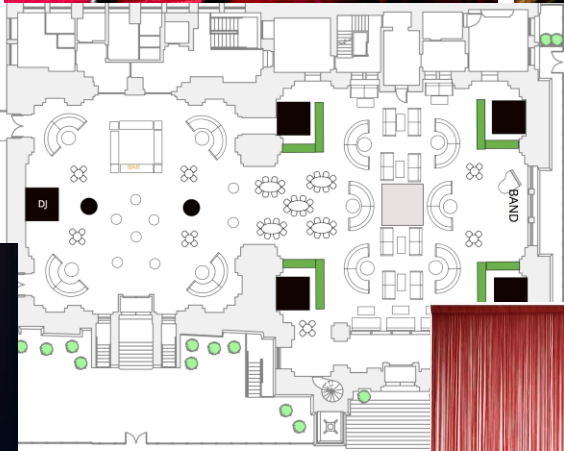
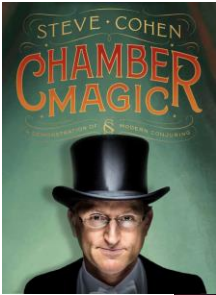
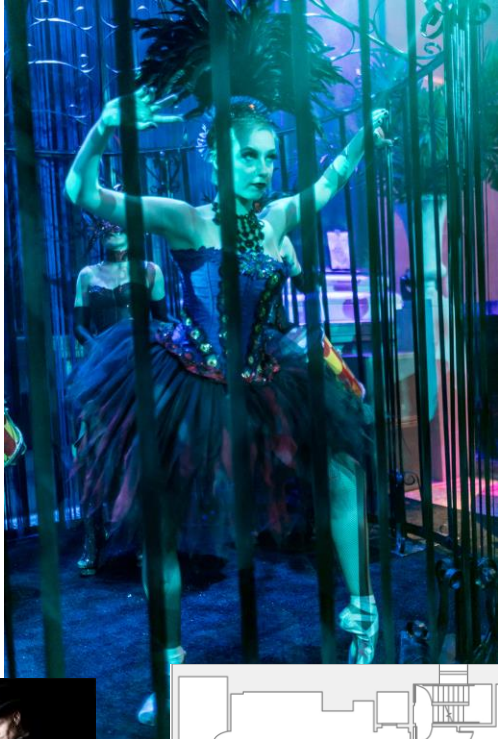
1965



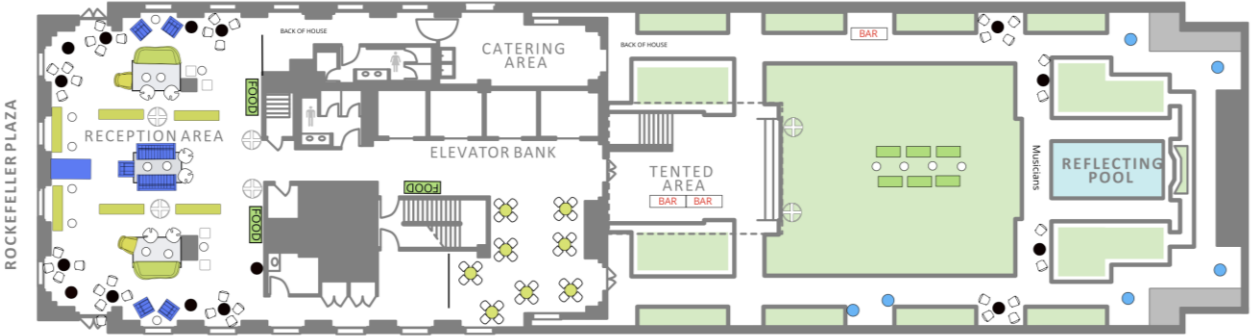
1965



AT THE WEYLIN



AT 620 LOFT AND GARDEN



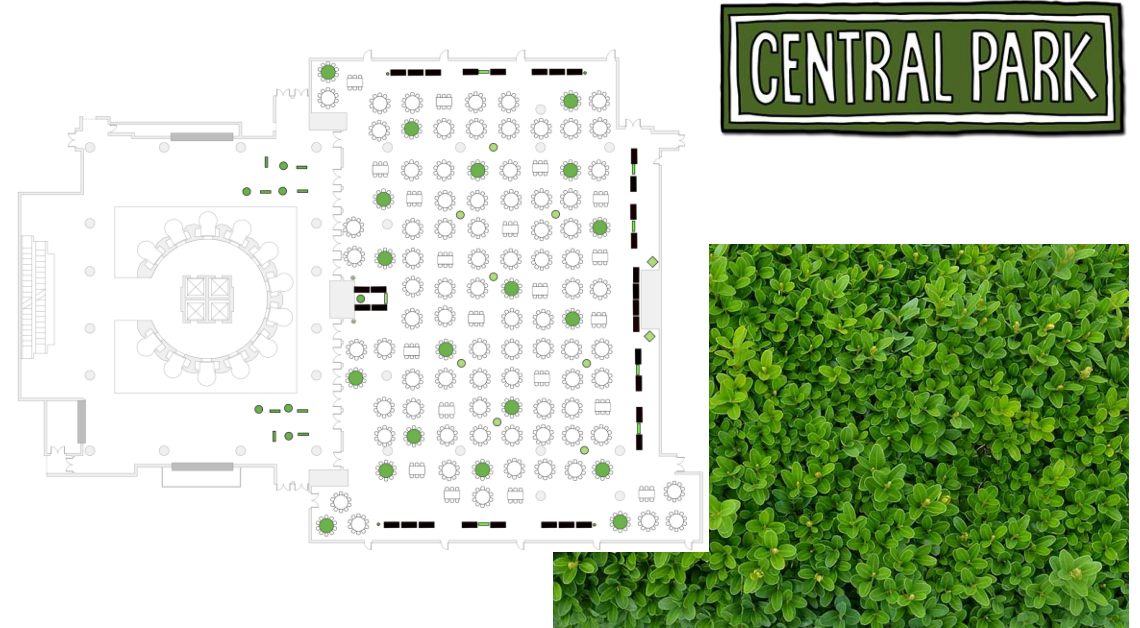
AREA RUGS

COFFEE AND SIDE TABLES

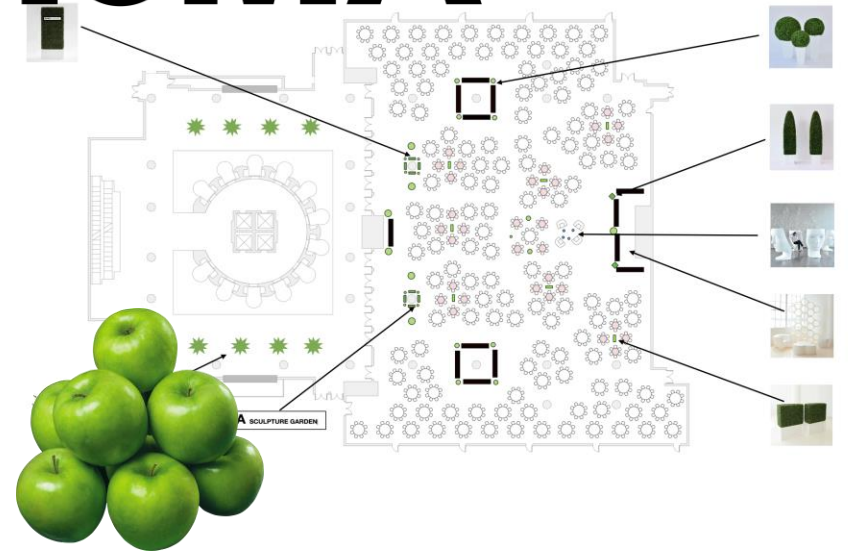
Linen: Stone Wall Citron
Alternative: Teal cotton

AQUA Accent

BREAKFAST AND LUNCH AT THE MARRIOTT MARQUIS

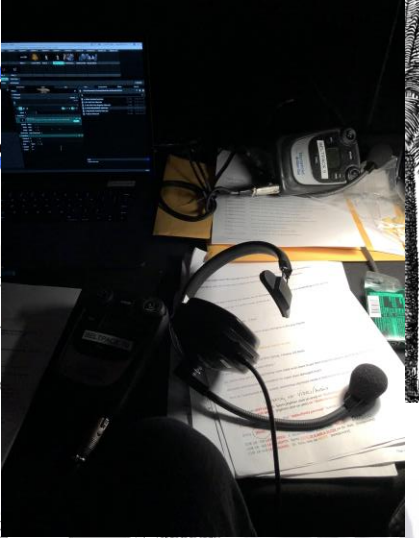


MoMA



AT THE MARRIOTT MARQUIS





SHACKMAN BEHIND THE SCENES

STAGE performer

FOOD

BAR

GIFT

COLORS
JEWEL TONE
COLORS /
HOLIDAY



THE SHACKMAN GROUP

