



the hoxton

The Hoxton, Paris  
30-32 Rue du Sentier, 75002, Paris

# The Hoxton, Paris

30-32 Rue du Sentier, 75002, Paris

Find us in the 2<sup>nd</sup> arrondissement; a charming area in easy walking distance of Le Louvre, Jardin des Tuileries, and Le Marais. Situated in a neighbourhood that is heaving with great food, fresh Parisian style and beautiful architecture: there's a real sense of old and new.

172 rooms

2 restaurants  
& 3 bars

12 meeting &  
party spaces

the hoxton



The Hoxton, Paris  
30-32 Rue du Sentier, 75002, Paris



## 172 rooms

From 13 to 36 sqm2, our Shoebox, Cosy, Roomy and Biggy's are the perfect fit for any stay. Oooh some Biggys even come with a garden terrace and a bath tub!



## Hosting a meeting or party?

L'Appartement, our unique meetings and events space, offers 7 individually designed rooms all centered around our fully stocked all you can eat Pantry. When booked together they can hold gatherings for up to 65 seated and 100 for a standing reception.



## No rip-off policy

Our rooms have everything you need and nothing you don't. Everyone gets water, fresh milk, coffee, tea, and a fridge that's yours to stock with snacks and drinks from our Hox Shop, where you'll find beers, wines and soft drinks at supermarket prices.

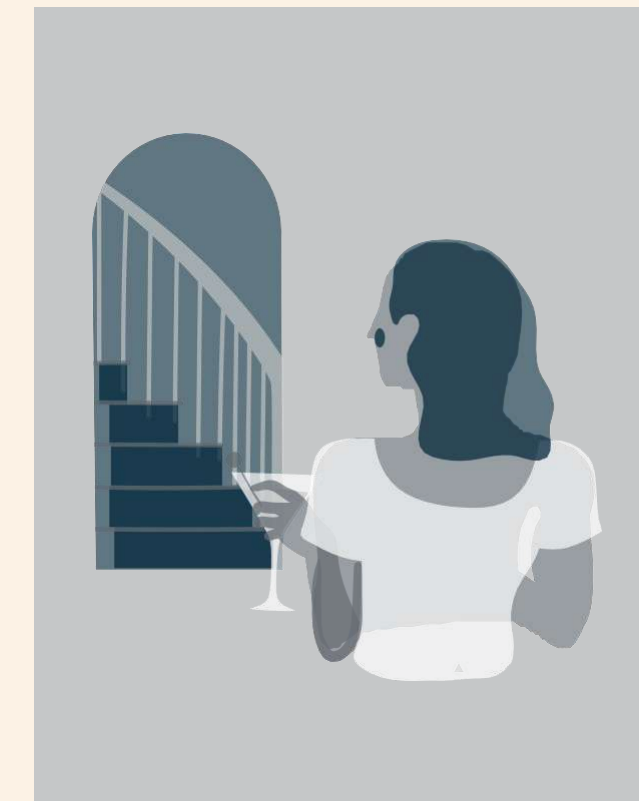


## Feelin' peckish?

Our allday lobby restaurant Rivié has a menu to suit all appetites. Then there's Jacques' Bar for cocktails and Planche for organic wine and small plates. Don't miss our popup winter and summer terrace hidden in the backyard!

### *The Neighbourhood*

Our hood is packed with great food, elegant Parisian style and historical architecture. By day, cobbled streets house openair markets and stylish boutiques, and by night, the area transforms, buzzing with busy bistros.



#### *Did you know?*

Talk about stairway to heaven. We've restored the original 18th century spiral staircase, which now takes you to the intimate cocktail bar, Jacques' Bar.

#### *How to get here*

Bonne Nouvelle Metro	1 min
Gare du Nord Station	15 mins
Charles de Gaulle Airport	35 mins
Orly Airport	40 mins

#### *Want to know more?*

[sales.paris@thehox.com](mailto:sales.paris@thehox.com)

+33 185 657500

Get comfy

172 bedrooms

Get comfy

## Our rooms

---

We've got you covered for your best night's sleep with comfy mattresses and black out blinds to help you drop off, and you'll find our very own bathroom amenities range, Blank, to get you squeaky clean the next morning.

Our rooms are designed to embrace the quirks and charms of our beautiful 18th-century hotel particulier.

The grandeur of the building, once home to Etienne Rivié, a counsellor to Louis XV, is echoed in the bedrooms through cornicing, panelling and chevron wood flooring.



Shoebox



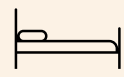
the hoxton

The Hoxton, Paris  
30-32 Rue du Sentier, 75002, Paris

# Shoebox



Average room size  
140-180 sq ft / 13-17 sq m



Mattress size  
Double Bed



Room capacity  
Up to 2 adults

Travelling light? Our Shoebox rooms are ideal for shorter stays or solo trips; compact but cleverly designed with parquet floors, bathrooms with rainfall showers, a full-length mirror, blackout curtains and bookshelves curated by locals.



Cosy



the hoxton

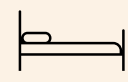
The Hoxton, Paris  
30-32 Rue du Sentier, 75002, Paris



# Cosy



Average room size  
180-205 sq ft / 17-19 sq m



Mattress size  
Queen Bed



Room capacity  
Up to 2 Adults

Our Cosy rooms are perfectly formed to fit two people without stepping on toes. All Cosy rooms have parquet floors, modern bathrooms with rainfall showers and Blank amenities, a full-length mirror, blackout curtains and bookshelves curated by locals.



Roomy



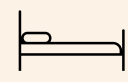
the hoxton

The Hoxton, Paris  
30-32 Rue du Sentier, 75002, Paris

# Roomy



Average room size  
205-260 sq ft / 19-24 sq m



Mattress size  
Queen or King Bed



Room capacity  
Up to 2 Adults, 1 Child

Roomy rooms are perfect for spreading out in, complete with parquet floors, rainfall shower, full-length mirror, A/C, blackout curtains, bookshelves curated by locals, and free coffee, tea, milk and water. There's a desk and chair in case you're burning the midnight oil – and all rooms are dog-friendly too.



Biggy



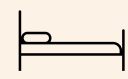
the hoxton

The Hoxton, Paris  
30-32 Rue du Sentier, 75002, Paris

# Biggy



Average room size  
250-390 sq ft / 23-36 sq m



Mattress size  
Queen or King Bed



Room capacity  
Up to 2 Adults, 1 Child

Looking for a pad? Our Biggy rooms are the largest of all, perfect for longer stays! Each Biggy has parquet floors, rainfall shower or roll-top tub, a full-length mirror, blackout curtains and bookshelves curated by locals. Bringing the fam? We can add another bed or connect you with another room – plus, dogs are welcome too!



