



treehouse

LONDON

CELEBRATE AT TREEHOUSE

PRIVATE DINING & ENTERTAINING



14-15 Langham Place, London W1B 2QS





TREEHOUSE HOTEL EVENTS FOR ALL OCCASIONS

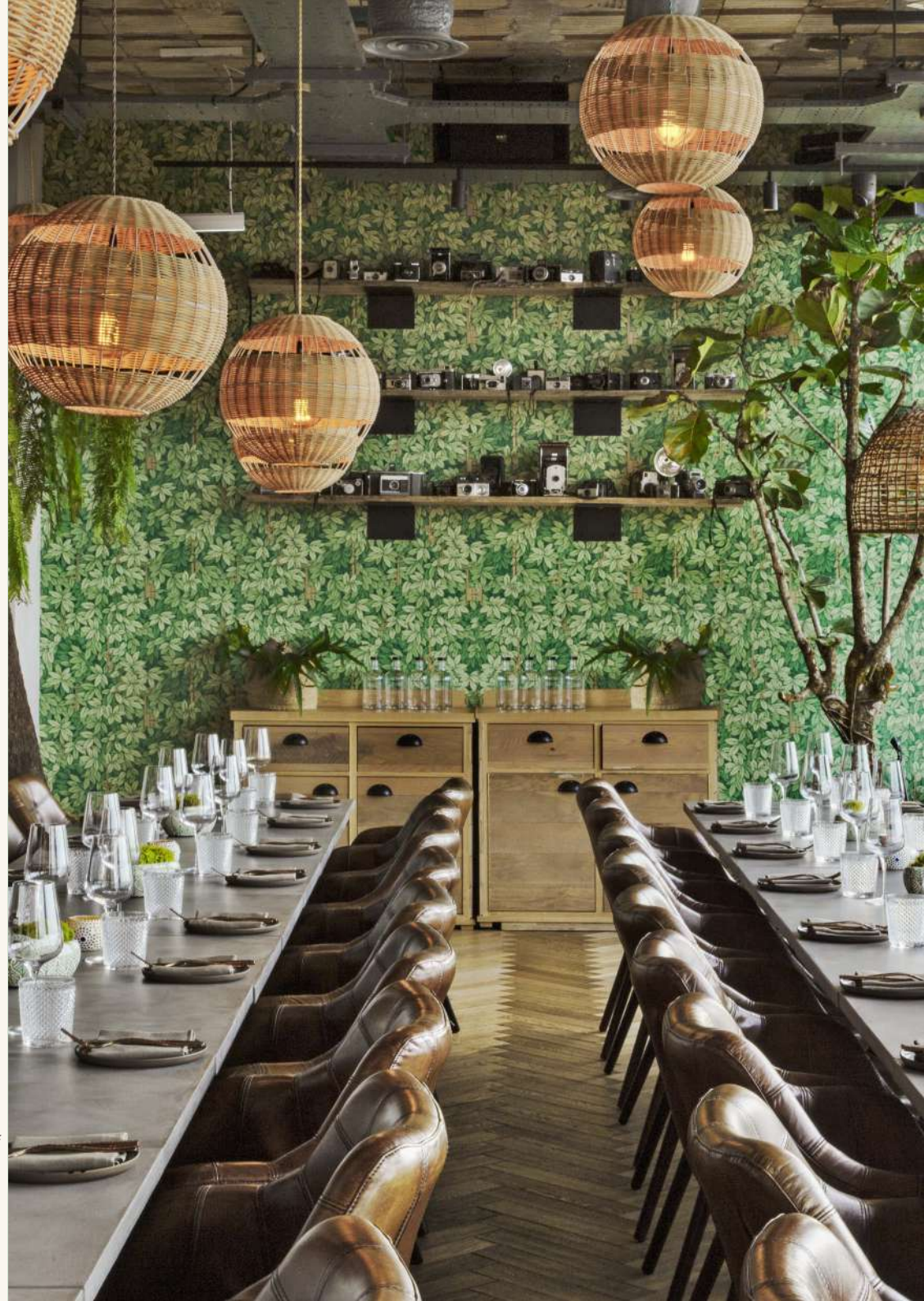
Perfectly placed high above London's historic Regent Street, Treehouse Hotel provides the ideal location and backdrop for private events and parties of all sizes. With uninterrupted views of London's iconic skyline, there's no better place to gather and raise a toast. Designed to appeal to the child in all of us, Treehouse is playful, curious, rustic and nostalgic.

Celebrate and entertain in one of the hotel's two thoughtfully designed and tech-ready private rooms or for larger parties, make a statement and take over the hotel's restaurant, Madera at Treehouse London.

For no less impressive occasions, fly up to our rooftop bar, The Nest. A 360-degree vista, a wrap-around terrace and DJ Booth provide all the details for the perfect party.

The Nest is the ultimate venue with its own craft cocktail bar and direct access from the ground floor via a private lift.

Pizzeria Mozza is designed to feel as though you are transported to a wild Mediterranean garden with lush interior planting and trees, the perfect escape from the bustle of historic Regent Street. A celebration of the best produce and impeccably sourced ingredients, lovingly prepared into dishes to share at the table, family-style.



MADERA RESTAURANT



AMAZING VIEWS, EAST & WEST, DAY & NIGHT

Madera at Treehouse London with its buzzing atmosphere offers unique interpretations of elevated Mexican cuisine and cocktails served across breakfast, lunch, dinner and at our signature high energy weekend brunch.

As the sun goes down, the lights in the hanging gardens illuminate to usher in the night and all its energy, music and celebrations.



MADERA DAY & NIGHT





As the little sister to Los Angeles based Toca Madera, this ingredient- forward concept is built for the bustling London diner.

Menus focus on farm-fresh plates that amplify the bold, playful flavours of Mexico, using organic, seasonal ingredients served alongside generous choices to host vegan, vegetarian, and gluten-free guests.

The expansive menus comprise of a raw bar, taqueria, starters and salads, and specialties served on lava stones.





The cuisine at Madera is complemented by an organic ingredient-driven drinks list crafted by The Madera Group's Beverage Director Charity Johnston's "farm-to-glass" mixology programme.

Our cocktails showcase individual flavours such as turmeric, chile de arbol, guava, guajillo-mango, prickly pear, butterfly pea flower tea, yuzu and tamarind, enhanced by an extensive collection of premium mezcal and tequilas, as well as a rotating list of international beers and wines.



MADERA COCKTAILS



MADERA PRIVATE DINING 
AMAZING VIEWS, EAST & WEST, DAY & NIGHT

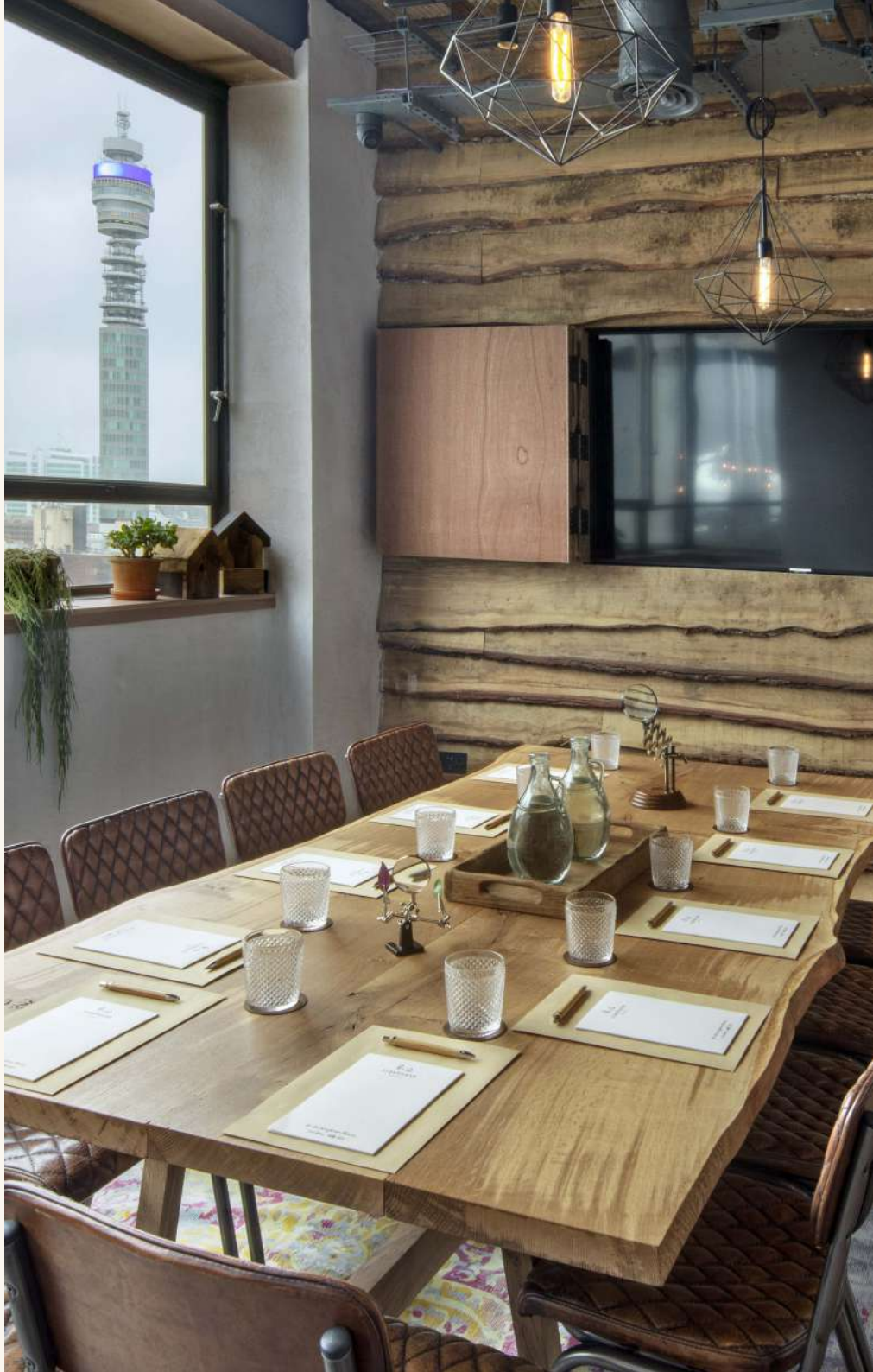


Madera at Treehouse London's thoughtful design features a semi-private extension of the restaurant overlooking the stunning views of west London that seats up to 80 guests.

For large events take over the entire restaurant space which can accommodate 130 seated guests.

The private room can also be arranged in a theatre style for launches, presentations and breakfast meetings.





MADERA PRIVATE DINING BIRCH



Gather up to 10 friends for a private lunch or dinner celebration in Birch.

This unique space is bathed in natural light, looking out across the north of the city with views of the BT Tower reaching towards Hampstead Heath.

Host team breakfasts, inspiring board meetings and creative group sessions with the use of an in-built screen, a conference phone, charge points, flip charts and stationery.



MADERA PRIVATE DINING

OAK



The spectacular south-facing Oak private dining room offers a unique backdrop for all occasions with views overlooking London landmarks including the London Eye, Houses of Parliament and Battersea Power Station.

Gather with up to twelve guests and enjoy Madera's modern take on Mexican dishes and bespoke cocktails.

For meetings, team briefings and brainstorms, take advantage of the in-built screen, a conference phone, charge points, flip charts and stationery.



THE NEST

ROOFTOP BAR WITH TERRACE & 360° VIEWS



Climb up to the hotel's 16th floor and take your perch in The Nest, our rooftop bar with unparalleled 360-degree views of London.

Settle into the indoor lounge filled with natural light, green foliage and natural materials—where DJs spin the decks from their very own treehouse 'fort'.

Cosy up on the outdoor wraparound terrace decked out with comfortable seating and secret garden hideaways.

The Nest's menus feature playful, market-driven cocktails and bar bites that draw inspiration from trees and showcase local ingredients, as well as offering a curated selection of wine and beer.

Our Chefs are able to offer a variety of canapé and bowl food options for drinks receptions.

A popular choice for private events, take over The Nest for breakfast briefings, drinks receptions and private parties.





WHERE HAPPY *memories* ARE EVOKED
AND NEW ONES TAKE FLIGHT

Step out on the verdant terrace
and take in the sights of the city.
This backdrop provides the perfect
outdoor space for an al fresco drinks
and canapé reception. Heaters and awnings offer
protection from the testing London weather.





PIZZERIA MOZZA FROM CHEF NANCY SILVERTON



A focus on locally sourced, premium, seasonal bounty is at the heart of Pizzeria Mozza, the first UK restaurant from internationally recognised Chef Nancy Silverton which opened at Treehouse Hotel London in August 2021.

Pizzeria Mozza was first established in Los Angeles, an expression of Nancy Silverton's unique aesthetic and approach to cooking: focused but not fussy, straightforward and always uncompromising.





The menu offers Pizzeria Mozza's much loved pizzas – famed for their unique dough recipe and well-structured crusts – as well as a selection of meat and fish dishes, all in celebration of the plentitude and vibrancy of seasonal produce and ingredients available in the UK.

Host relaxed cocktail parties at the Bar with a selection of Mozza's substantial appetisers including Arancine alla Bolognese, White bean bruschetta and Sottocenere al forno. For seated family style entertaining at lunch or dinner, feast on our sharing menus of antipasti, insalata, pizza and dolci prepared in front of you in our open kitchen.



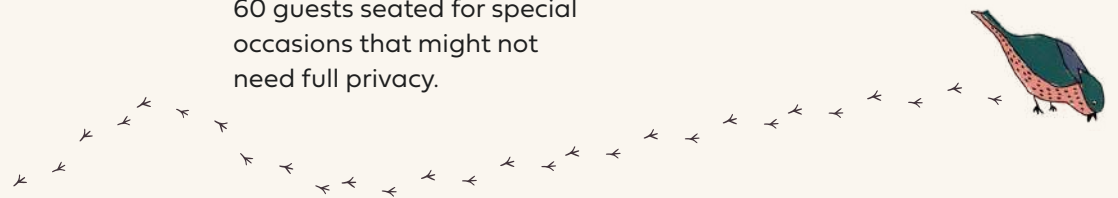


Designed to feel as though you are transported to a wild Mediterranean garden with lush interior planting and trees, the restaurant is an escape from the bustle of historic Regent Street, located adjacent to Treehouse Hotel London.

The restaurant can be hired exclusively for up to 130 guests seated or 150 reception style, alternatively, half of the restaurant can be booked semi-privately for up to 60 guests seated for special occasions that might not need full privacy.

Pizzeria Mozza's cocktail programme is a mix of classic cocktails that contain Italian ingredients and the Mozza signatures.

The predominantly Italian wine list, has been compiled with the authentic Italian food menu in mind. Our Sommelier can guide you through the different regional Italian wines to compliment the selected dishes at your event.



"THERE'S *magic* IN THIS DOUGH.
NO, NOT MAGIC: *witchcraft*"
Marina O'Loughlin, The Sunday Times Magazine



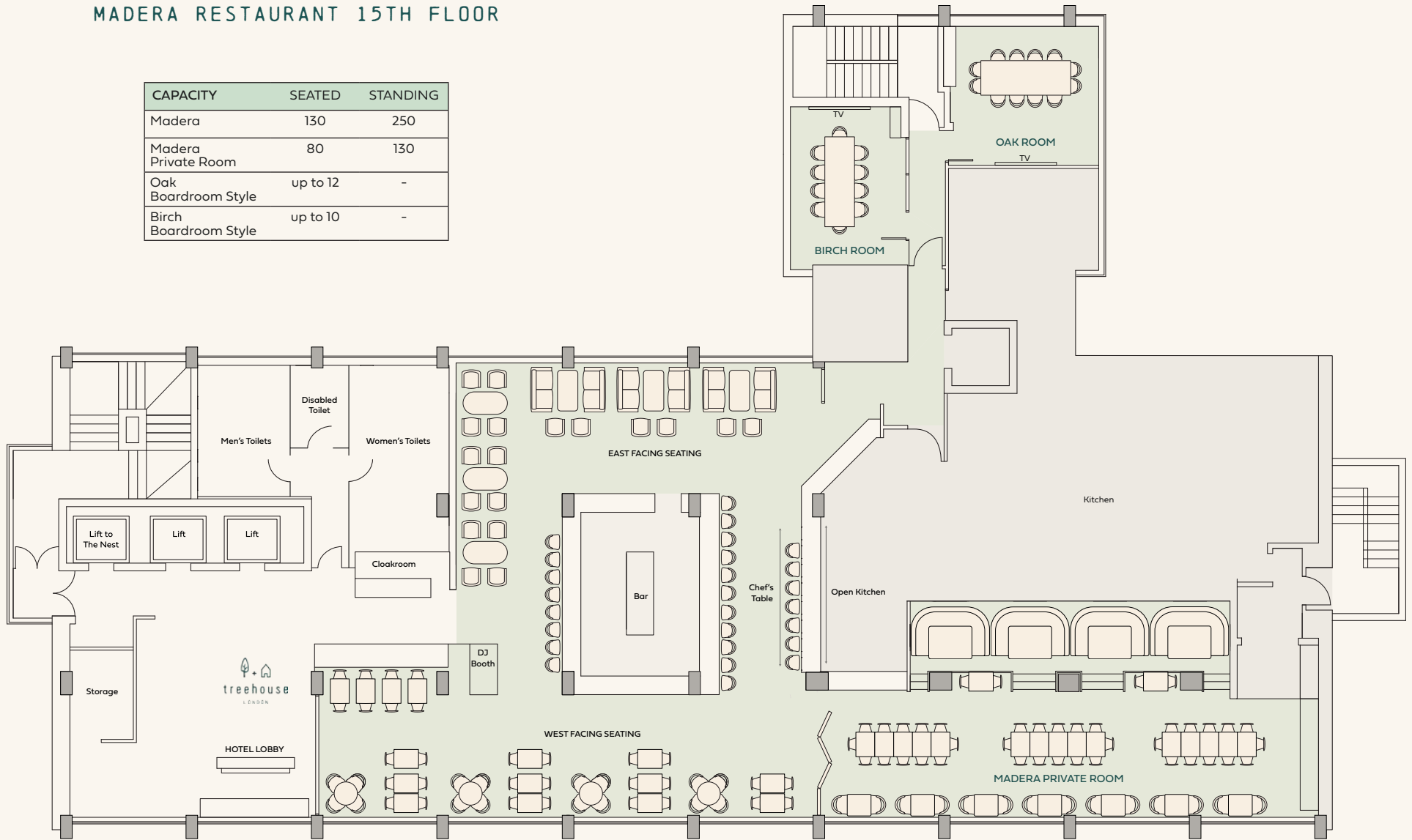


MADERA

FLOOR PLANS

MADERA RESTAURANT 15TH FLOOR

CAPACITY	SEATED	STANDING
Madera	130	250
Madera Private Room	80	130
Oak Boardroom Style	up to 12	-
Birch Boardroom Style	up to 10	-



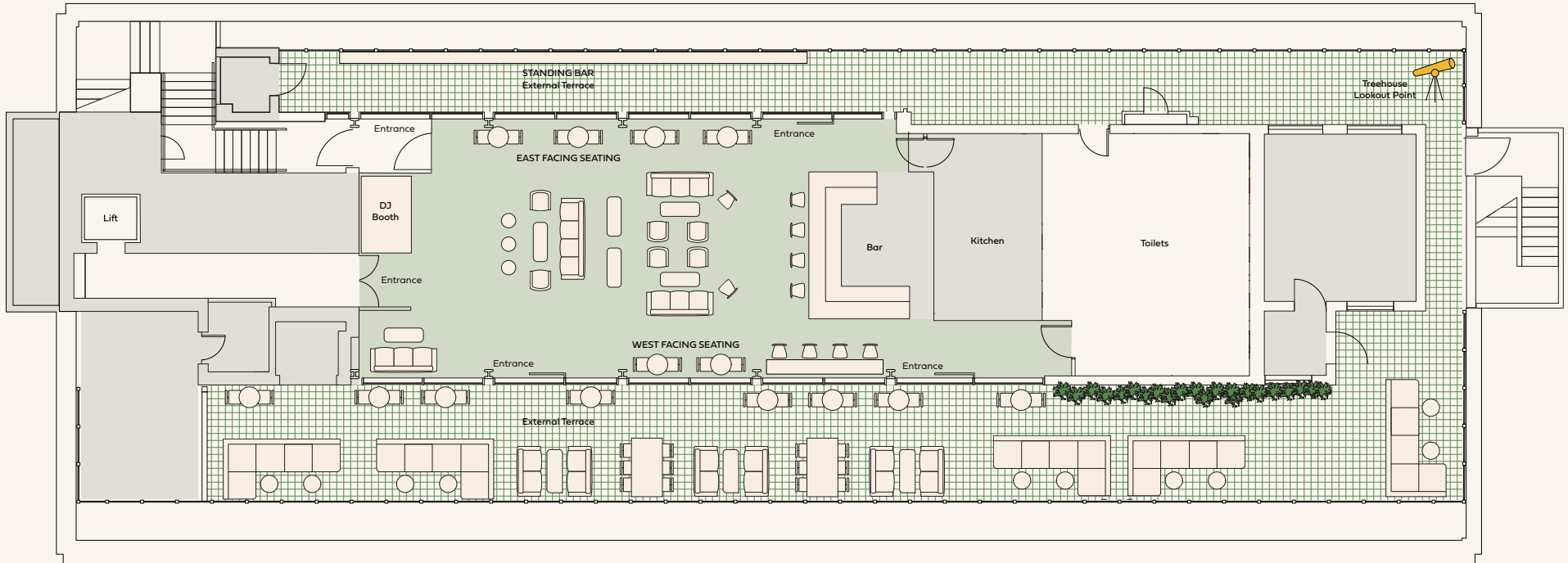
FLOORPLANS: MADERA, OAK AND BIRCH PRIVATE DINING

The Nest
in treehouse

FLOOR PLANS

NEST ROOFTOP BAR 16TH FLOOR

CAPACITY	SEATED	STANDING
The Nest	48	100
The Nest & Roof Terrace	200 Reception Style	

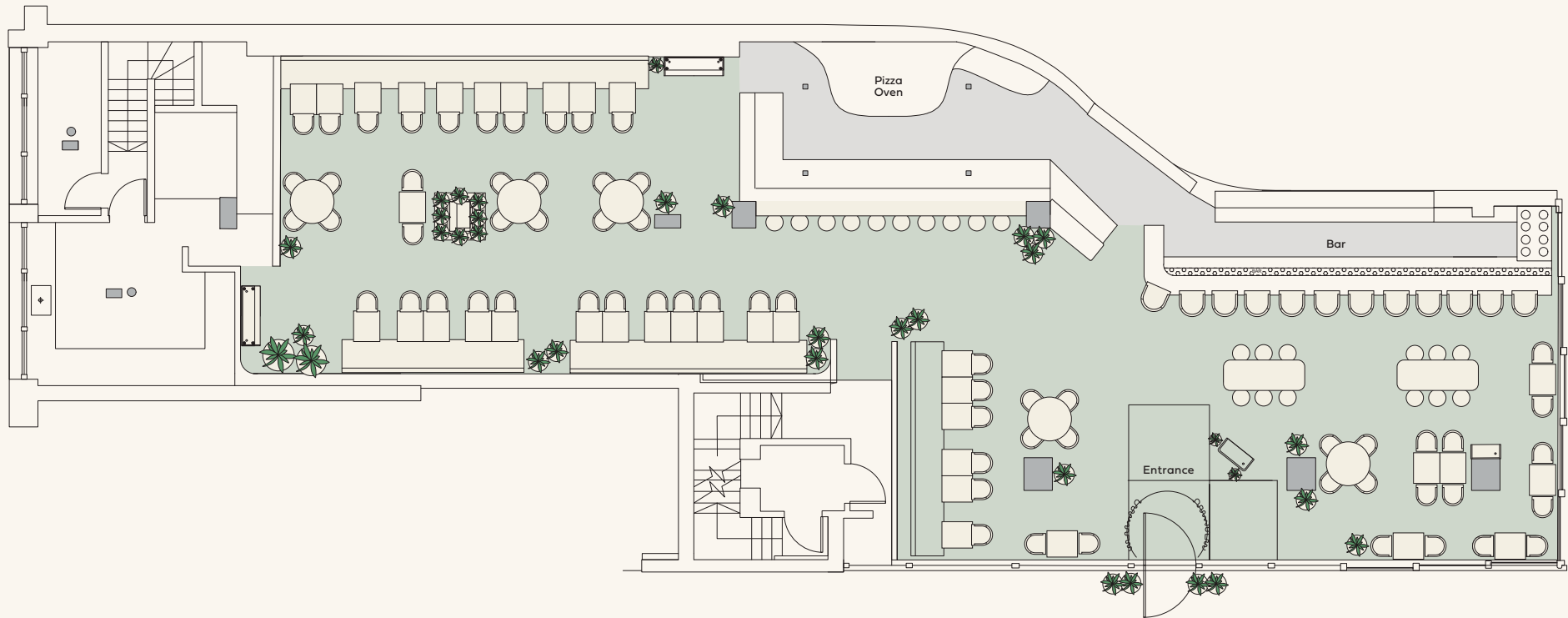




FLOOR PLANS

PIZZERIA MOZZA GROUND FLOOR

CAPACITY	SEATED	STANDING
Pizzeria Mozza	130	150



FAQS

USEFUL INFO

CAPACITY

	Seated	Standing
Madera	130	250
Madera Private Room	80	130
Oak	up to 12 boardroom style	
Birch	up to 10 boardroom style	
The Nest	48	100
The Nest & Roof Terrace	200 reception style	
Pizzeria Mozza	130	150

TIMINGS

Madera	Access	Service
Breakfast	7am	8am - 10.30am
Lunch	12pm	12pm - 3pm
Dinner	5pm	6pm - 1am

The Nest	Access	Service
Breakfast	7am	8am - 12pm
Lunch	11am	12pm - 5pm
Evening	5pm	6pm - 1am

Mozza	Access	Service
Breakfast	7am	8am - 12pm
Lunch	11am	12pm - 5pm
Dinner	4pm	5pm - 10pm

Timings can be discussed on an individual basis.

SERVICE

A discretionary service charge of 12.5% will be added to your bill. All prices include VAT.

EXTRAS

AV requirements fulfilled
55" Screens in Oak and Birch
Bespoke Menus
Live music or a DJ can be arranged by management approval
Private cloakroom in The Nest
Express lift access to The Nest
Microphones available in The Nest
Ground floor entrance at Pizzeria Mozza

STAY AT TREEHOUSE

Looking to accommodate guests for your event? Stay in one of the hotel's 95 rooms. Contact our sales team to discuss your requirements. THLO-sales@treehousehotels.com

CONTACTS

Mikey Burgoyne
Events Sales Manager
THLO-sales@treehousehotels.com



DISCOVER MORE ABOUT TREEHOUSE

www.treehousehotels.com @staytreehouse
@thenestintreehouse @maderalondon @pizzeriamozzalondon




treehouse
LONDON

14-15 Langham Place, London W1B 2QS