



treehouse

MANCHESTER





ABOUT TREEHOUSE HOTELS

TREEHOUSE HOTELS WAS FOUNDED ON THE IDEAS THAT INSPIRE A CHILD TO BUILD A TREEHOUSE. ADVENTURE, INDEPENDENCE, COSY SPACES AND REPURPOSING CRAFTY THINGS ARE WHAT MAKE A PLACE WARM AND SPECIAL. THAT'S WHY EVERY TREEHOUSE HOTEL CELEBRATES FOUND OBJECTS, NOSTALGIC TUNES, HANDMADE DETAILS AND LOCALLY SOURCED TREATS.



TREEHOUSE HOTEL MANCHESTER



Treehouse Manchester will be the second hotel within the Treehouse Hotels brand and second hotel for SH Hotels & Resorts in the UK.

Within our Treehouse, every detail is imagined through the carefree, optimistic lens of childhood and balanced with a distinctly modern sensibility. With attentive service, locally inspired fun amenities, thoughtful programming, and several food & beverage offerings, we are about playfulness and freedom.

TAKING ROOT 2024



DISCOVER MORE

THMC-sales@treehousehotels.com
www.treehousehotels.com/manchester

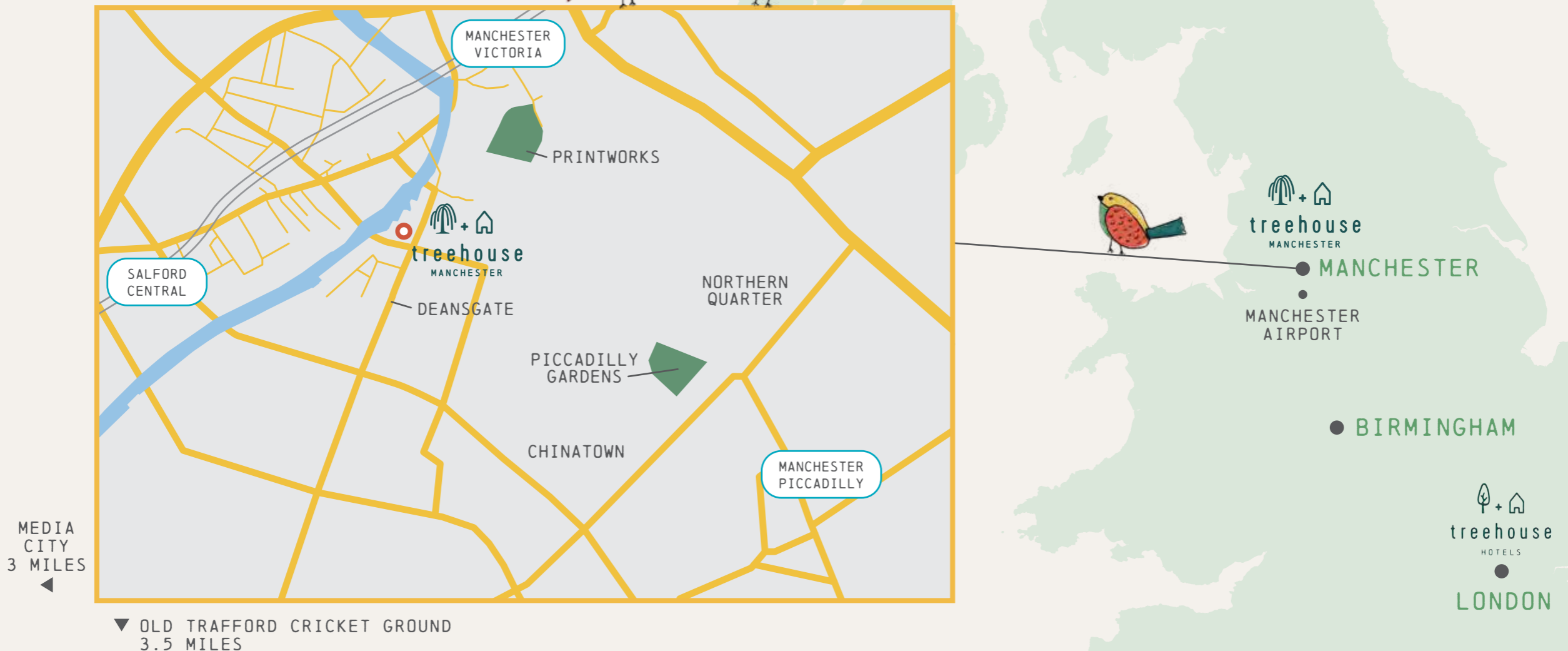


LOCATION

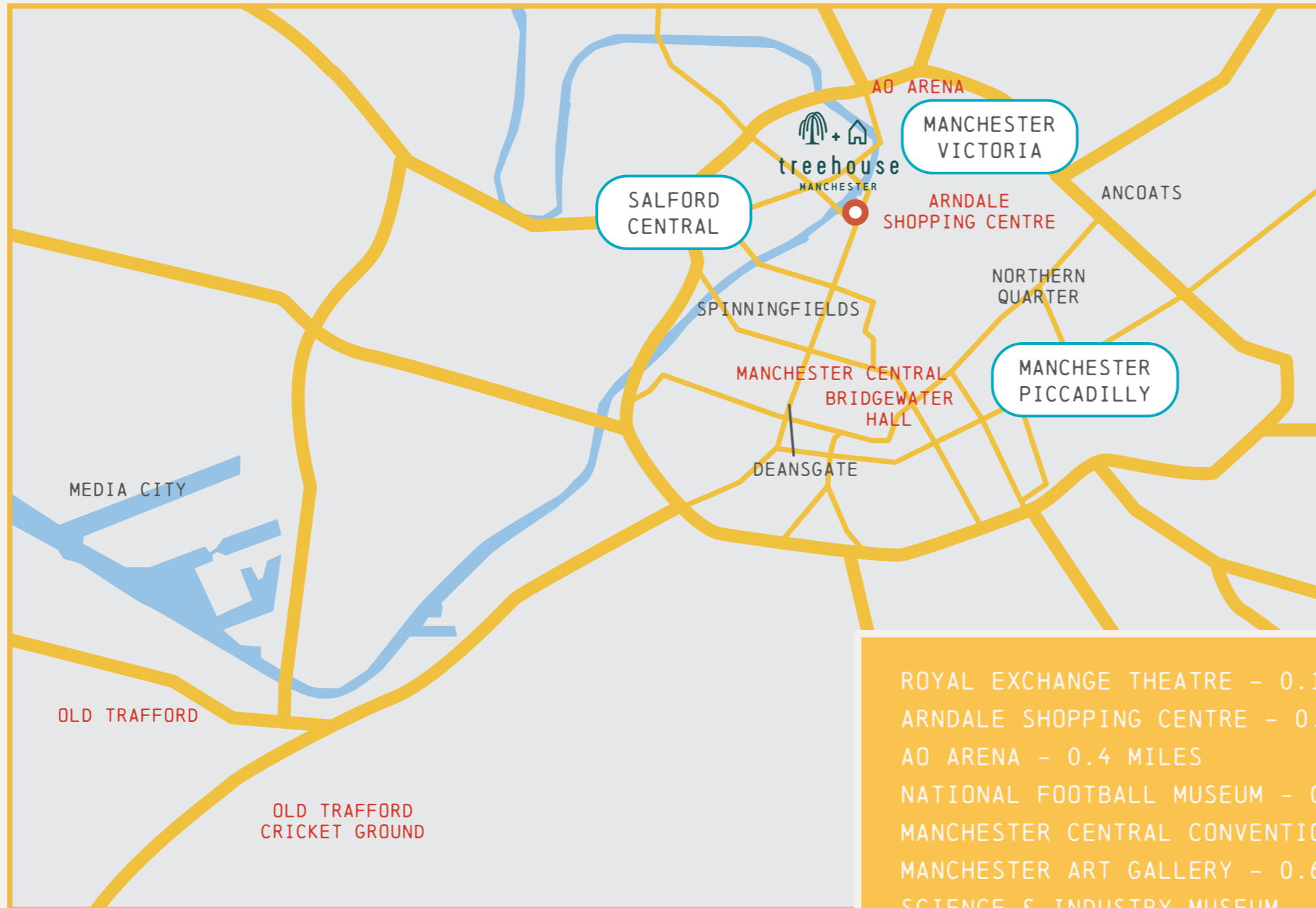
TRAVELLING TO TREEHOUSE MANCHESTER

International transport links from Manchester Airport, 30 minutes from Treehouse Manchester and a 2-hour train journey to London Euston.

TREEHOUSE HOTEL MANCHESTER
BLACKFRIARS STREET
MANCHESTER M3 2EQ



MORE OF MANCHESTER



With Treehouse Manchester as your home base, get out and explore the city's attractions.



▼ MANCHESTER AIRPORT
9.5 MILES

- ROYAL EXCHANGE THEATRE - 0.1 MILES
- ARNDALE SHOPPING CENTRE - 0.2 MILES
- AD ARENA - 0.4 MILES
- NATIONAL FOOTBALL MUSEUM - 0.4 MILES
- MANCHESTER CENTRAL CONVENTION COMPLEX - 0.6 MILES
- MANCHESTER ART GALLERY - 0.6 MILES
- SCIENCE & INDUSTRY MUSEUM - 0.7 MILES
- THE UNIVERSITY OF MANCHESTER - 2.7 MILES
- ETIHAD MANCHESTER CITY FC - 2.9 MILES
- OLD TRAFFORD MANCHESTER UNITED FC - 3.1 MILES



SLEEP

CLIMB UP AND COSY INTO YOUR NATURE NOOK
AT TREEHOUSE MANCHESTER, WHERE EACH GUEST
ROOM BOASTS ITS OWN QUIRKY FLAIR AND
PERFECTLY IMPERFECT CHARM.



GUEST ROOMS

ROOMS: 224 WITH INTERCONNECTING ROOMS

SUITES: 14 WITH 1 PENTHOUSE TREETOP SUITE

PANORAMIC WINDOWS, TECH-READY ROOMS, HIGH SPEED WIFI



Our rooms are cosy, welcoming and colourful, just like your childhood clubhouse.

ROOM CATEGORIES



224 ROOMS

43 KING - 16M²

40 LOOKOUT KING - 16M²

43 STUDIO SUITE - 31M²

56 LOOKOUT STUDIO SUITE - 32M²

15 TWO QUEENS - 31M²

18 LOOKOUT TWO QUEENS - 31M²

4 CLUB SUITE - 49M²

4 CABIN SUITE - 65M²

1 TREETOP SUITE - 100M²

1 CONNECTING KINGS - 55M²

4 CONNECTING KING & LOOKOUT KING - 55M²

1 CONNECTING STUDIO & LOOKOUT KING - 57M²

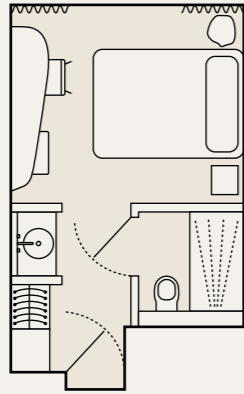
3 CONNECTING LOOKOUT STUDIO & LOOKOUT KING - 57M²

3 CONNECTING STUDIO SUITES - 64M²

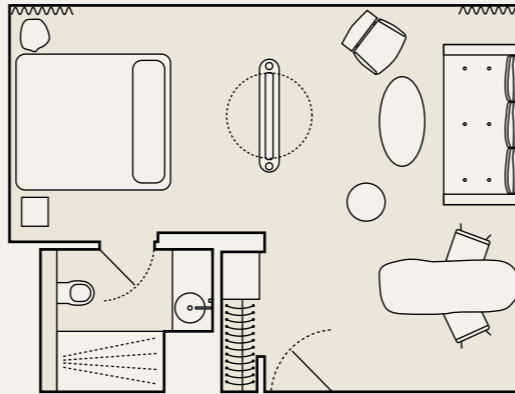
3 CONNECTING LOOKOUT STUDIO SUITES - 64M²



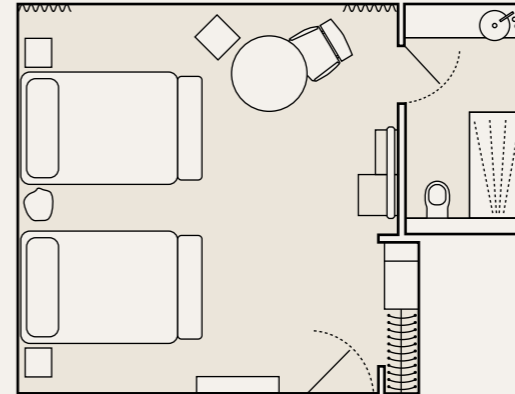
ROOM LAYOUTS



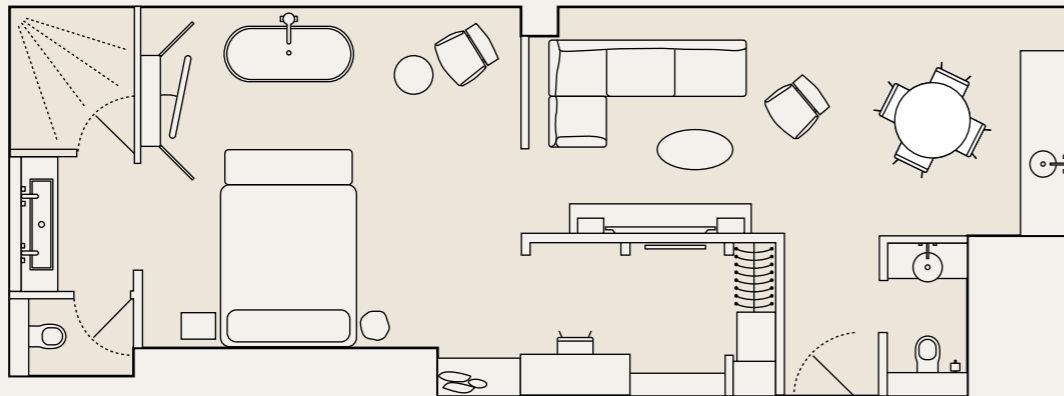
KING &
LOOKOUT KING



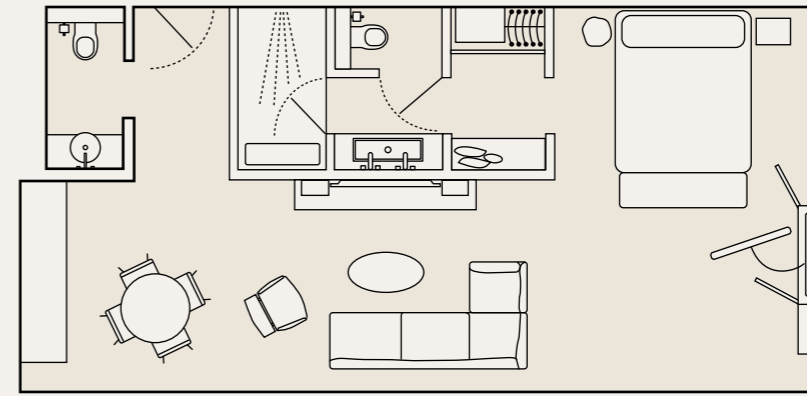
STUDIO SUITE &
LOOKOUT STUDIO SUITE



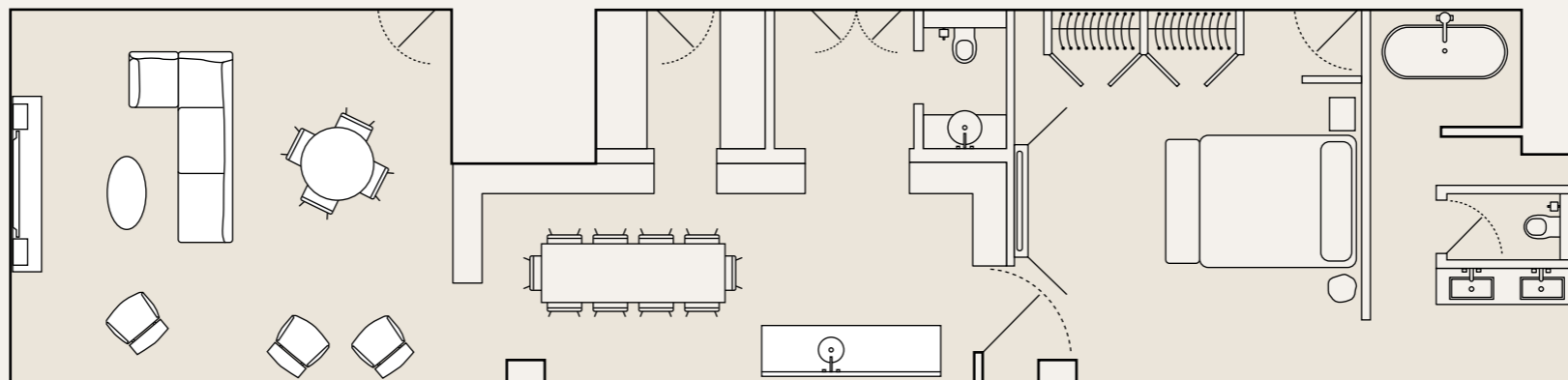
TWO QUEENS &
LOOKOUT TWO QUEENS



CABIN SUITE



CLUB SUITE



TREETOP SUITE



GATHER

A STAND-OUT SPOT IN THE HEART OF THE CITY, TREEHOUSE MANCHESTER IS THE PERFECT BACKDROP FOR PRIVATE EVENTS AND PARTIES OF UP TO 400 PEOPLE. THOUGHTFUL TOUCHES, AND COUNTLESS DESIGN DETAILS WILL MAKE YOU FEEL LIKE YOU'RE UP IN THE TREES, EACH SPACE IS SURE TO INSPIRE CONNECTION, SPARK IMAGINATION, AND DARE YOU TO DREAM BIGGER.



EVENT AND MEETING ROOMS

7 SPACES SITUATED ON THE 1ST FLOOR:
WILLOW, CEDAR, CHESTNUT, WALNUT & ACORN ROOMS
BAR & LOUNGE
FLIX SCREENING DEN

TOTAL MEETING SPACE: 655M²



FLIX SCREENING DEN

THE LATEST STATE-OF-THE-ART SOUND & PROJECTION EQUIPMENT FOR A FULLY IMMERSIVE AUDIO-VISUAL EXPERIENCE.

PROJECTION

4K RGB Barco Laser projector
Dolby IMS3000 with 10TB NAS storage.

AUDIO

Dolby Atmos with bi-amplified audio and 28 surround channels.
Qsys control with QSC speakers and 44 channels of amplifiers.

SCREEN

A 5-meter-wide image on a matt white screen surface.

SEATS

43 x Premium seats with USB sockets.
1 x Wheelchair access point.

INPUT SOURCES

Multi-format presentation switch supporting HDMI matrix,
DVDs, & streaming services.

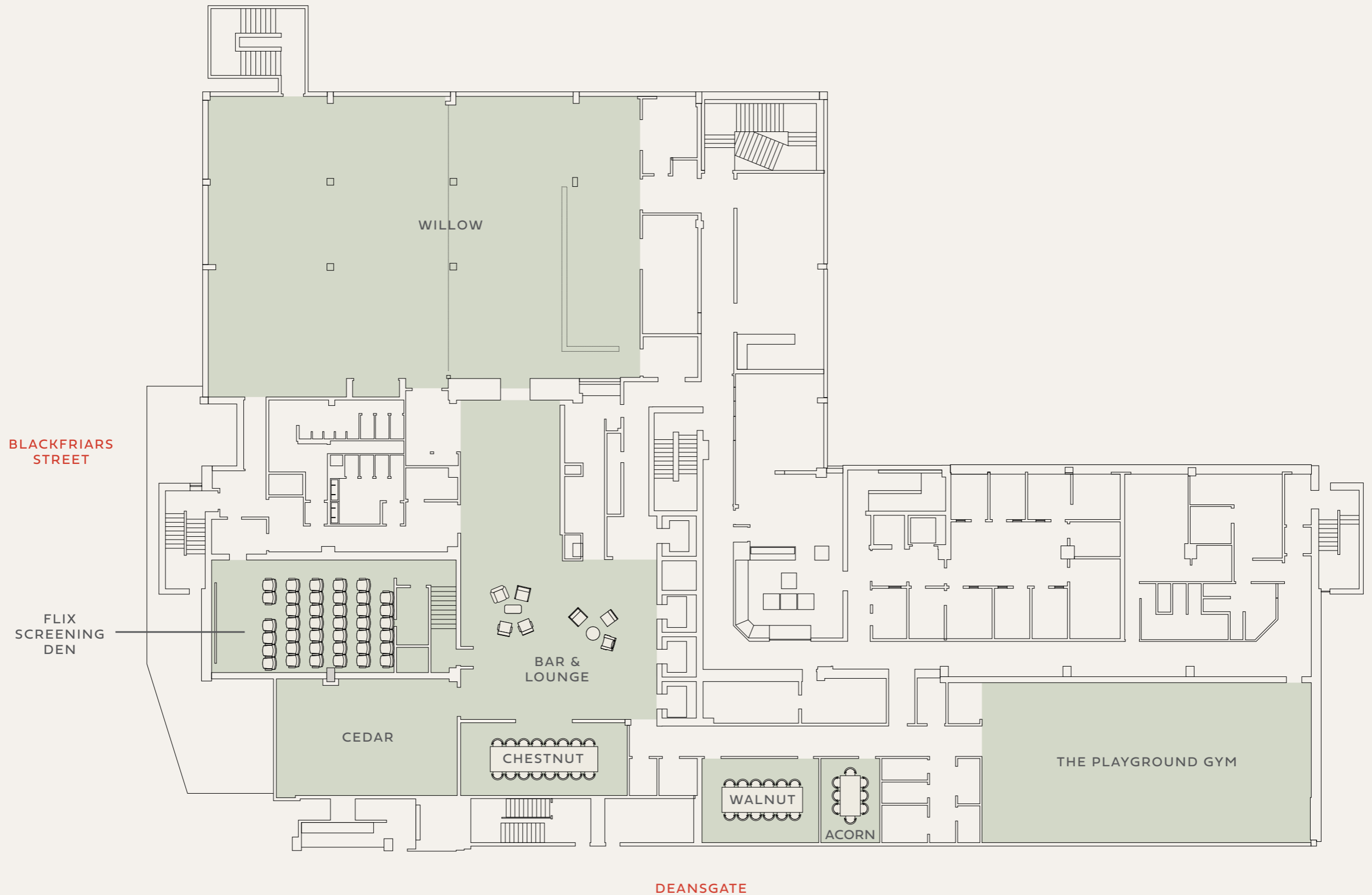
ACCESSIBILITY

2 x Dolby Accessibility Solutions, integrating hearing impaired amplified audio, visually impaired narrative audio, & closed captions, in a dedicated receiver with touchscreen capability.

4 x Infra-Red headphones for assisted listening.



EVENT SPACES ON THE FIRST FLOOR



MEETING ROOMS AND EVENT SPACES



WILLOW (445M²)

WILLOW I - THEATRE

276 Seats

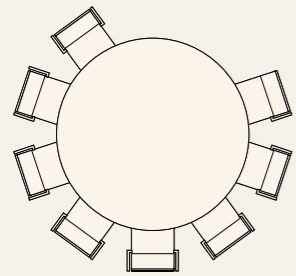


WILLOW II - THEATRE

182 Seats

WILLOW I & II - THEATRE

458 Seats



WILLOW I - CABARET

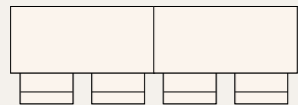
128 Seats

WILLOW II - CABARET

96 Seats

WILLOW I & II - CABARET

240 Seats



WILLOW I - CLASSROOM

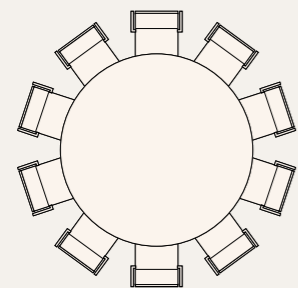
138 Seats

WILLOW II - CLASSROOM

94 Seats

WILLOW I & II - CLASSROOM

232 Seats



WILLOW I - ROUND TABLE

210 Seats

WILLOW II - ROUND TABLE

140 Seats

WILLOW I & II - ROUND TABLE

350 Seats

FLIX SCREENING DEN (85M²)

42 seats + 1 wheelchair space

CEDAR (87M²)

46 pax - Cabaret

60 pax - Round table

80 - Theatre Style

CHESTNUT (42.8M²)

16 pax

WALNUT (29M²)

12 pax

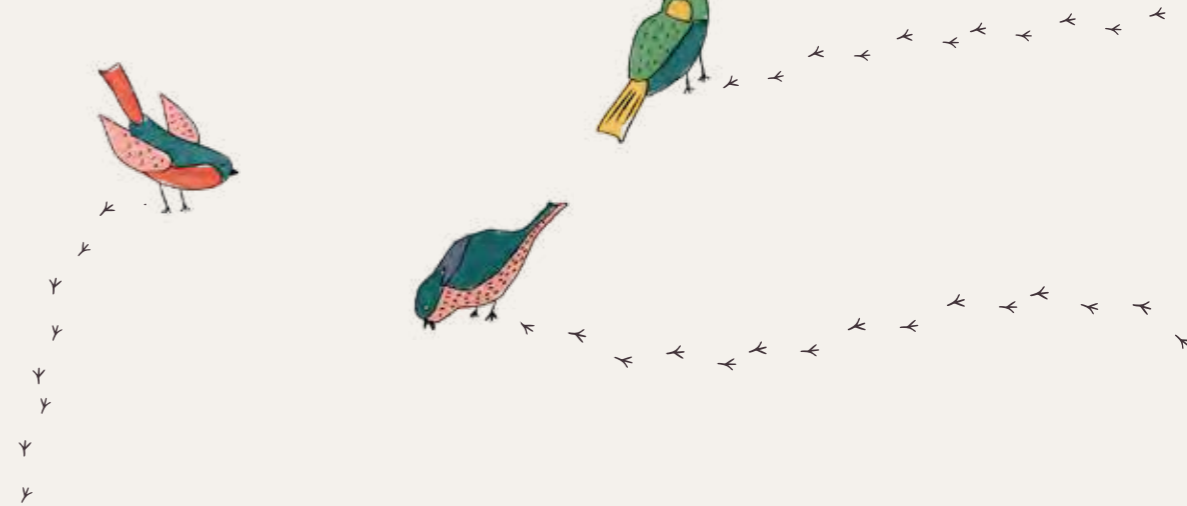
ACORN (14M²)

8 pax

THE HIDEOUT (110M²)

ON THE 15TH FLOOR

56 - Standing



SEASONAL EVENT MENUS BY MARY-ELLEN MCTAGUE

Fuel your events with local farm-to-table fare curated by Mary-Ellen McTague. From traditional breakfasts and baked goods to delicious lunch and dinner dishes—enjoy every bite knowing it boasts the freshest ingredients, picked-to-order from nearby organic and regenerative farms.

Mary-Ellen McTague, has over 20 years' experience in hospitality, spanning multiple sizes and styles of operation. Mary-Ellen's outstanding career began in the then-Michelin starred Sharrow Bay Country House hotel, followed by four years spent working with Heston Blumenthal, firstly as Sous Chef at the 3 Michelin-starred Fat Duck, then as Research and Development Chef, working on historical food for Blumenthal's Hind's Head and Fat Duck menus.

A true pioneer in sustainable kitchen practises over the last six years, Mary-Ellen will bring this ethos of sustainability in modern cuisine to the banqueting spaces. Fundamental to this will be a zero-waste focus and her modern twist on traditional cooking techniques. The menus will change seasonally, with a focus on utilising produce sourced from local farms.



EAT AND DRINK

GROUND FLOOR RESTAURANT BY MARY-ELLEN MCTAGUE

Modern British cuisine re-imagined with fresh seasonal produce from sustainable local growers.

14TH FLOOR RESTAURANT BY SAM GRAINGER

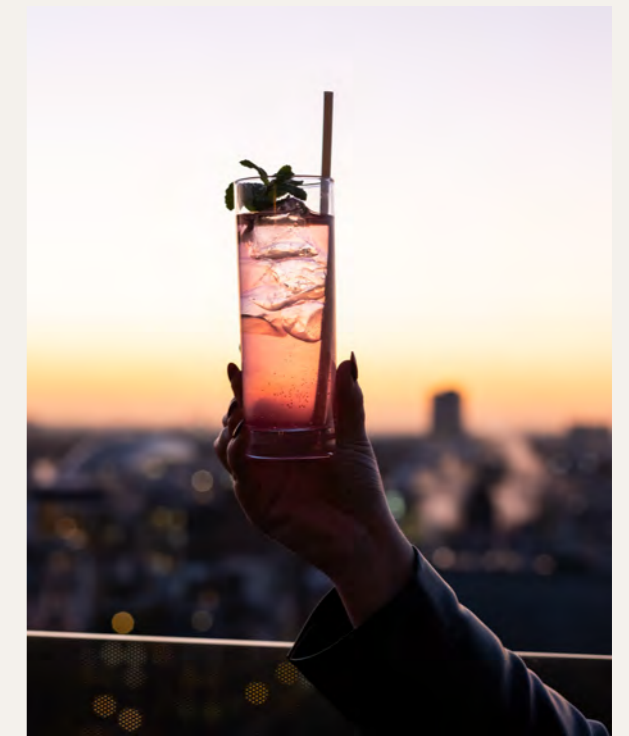
Elevated Southeast Asian menu, with a fusion of European ingredients & culinary techniques.

THE NEST 14TH FLOOR BAR

Panoramic rooftop bar with an eclectic cocktail menu, & unparalleled views of the city.

THE HIDEOUT 15TH FLOOR LOUNGE

Rooftop lounge with an outdoor terrace, a secret hideaway exclusively for private hire.



CHEF PARTNERS



Treehouse Manchester is working with a stellar line-up of the North West's highly regarded chefs and restaurateurs, Mary-Ellen McTague, Sam Grainger, Luke Cowdrey and Justin Crawford across the F&B offerings.



PLAY

AMENITIES AND FACILITIES:

PLAYGROUND GYM

RETAIL AREA

MEETING ROOMS

FLIX SCREENING DEN

VARIETY OF ROOMS & SUITE OPTIONS

Our Treehouse crew of Fun Finders will be ready to let you in on their best kept Manchester secrets.

Ask for their favourite spots to dine, drink, shop, and explore the city.



SUSTAINABLE WAYS AT TREEHOUSE HOTEL MANCHESTER

We know our guests and travellers are thinking about sustainability and that it is important to them. Treehouse Hotels knows we have a responsibility to respect nature and have a responsible mindset.

From conscious construction of our hotel, recycling and repurposing materials, including giving new life to decorative pieces by finding found objects locally, to our ethically sourced supplies, and responsible consumption, we know our choices matter.



Guests can enjoy our Treehouse honey, harvested from 9 beehives on the hotel's roof, made by 180k bees, who are cared for by the Volition community volunteer group from Manchester Cathedral.



OUR TREEHOUSE FAMILY



TREEHOUSE HOTEL LONDON
OPENED NOVEMBER 2019

Located in London's vibrant
Marylebone neighbourhood.

95 rooms (starting at 23m²);
including 12 suites

Street Level Coffee Shop:
Backyard

Ground Floor Restaurant:
Pizzeria Mozza London

15th Floor Restaurant:
Madera at Treehouse London

16th Floor Rooftop Lounge:
The Nest





THMC-SALES@TREEHOUSEHOTELS.COM
TREEHOUSEHOTELS.COM/MANCHESTER