



CONFERENCES & MEETINGS

www.coppidbeech.com



BE INSPIRED.

Flexible Meetings and Events

The Coppid Beech Hotel offers flexible conference solutions to suit your requirements. Our meetings and events team endeavour to meet each client's specific needs to ensure the meeting runs smoothly. Whether you are looking for a meeting room for just two people

or looking to hold a larger conference we can accommodate up to 280 delegates. Furthermore, we can tailor a proposal to fit your exact requirements. If you require accommodation for your conference we have 205 comfy and spacious bedrooms to offer your guests.

**Ten
Conference
Rooms**

**350
People
Capacity**

**9 ft.
Electronic Screens
in Every Room**

**Meals &
Snacks**

**On-site
Car Parking**

Why Us?

The Coppid Beech Hotel has easy access from the M3 and M25 and is located 25 minutes away from Heathrow Airport, 45 minutes away from London and 8 minutes away from Bracknell's train station.

- ✓ 10 flexible meeting and conference spaces
- ✓ Host conferences and events up to 350 people
- ✓ Free high-speed Wi-Fi for all delegates
- ✓ 250 free car parking spaces
- ✓ 205 ensuite bedrooms
- ✓ BEAM accredited (formerly HBAA)

We take care of everything so you can

FOCUS ON WHAT'S IMPORTANT.





Our Suites

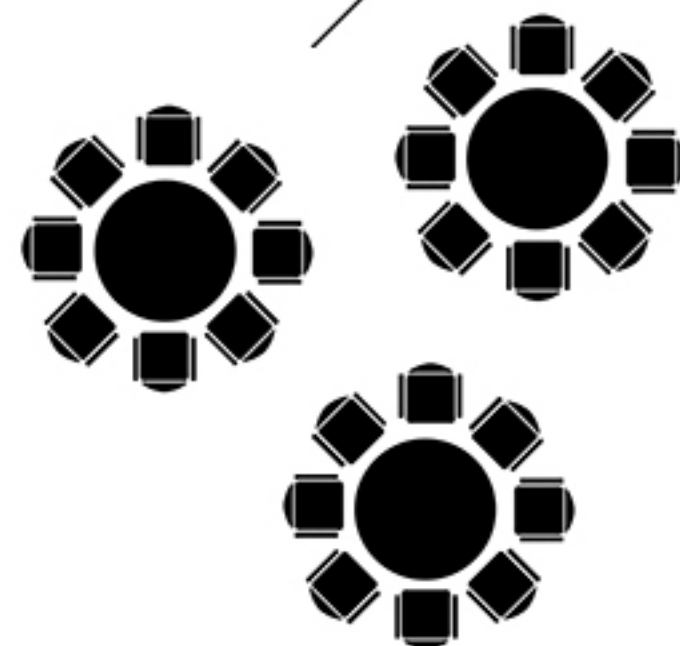
Choose Your Layout

It doesn't matter if you're organising a conference, an event or a meeting. At Coppid Beech Hotel you can choose between one or several predetermined layouts to accommodate your needs. These are our available options. If you can't find a suitable one please give us a call and a member of staff will be delighted to help you.

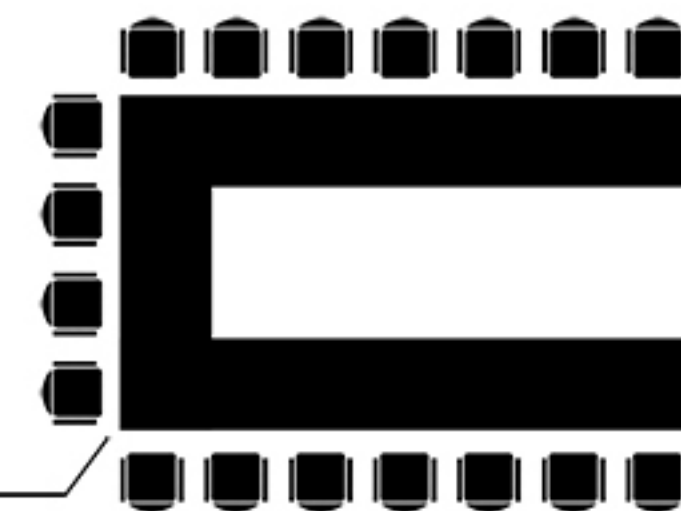
Business Meeting



Cabaret



U-Shaped



Classroom



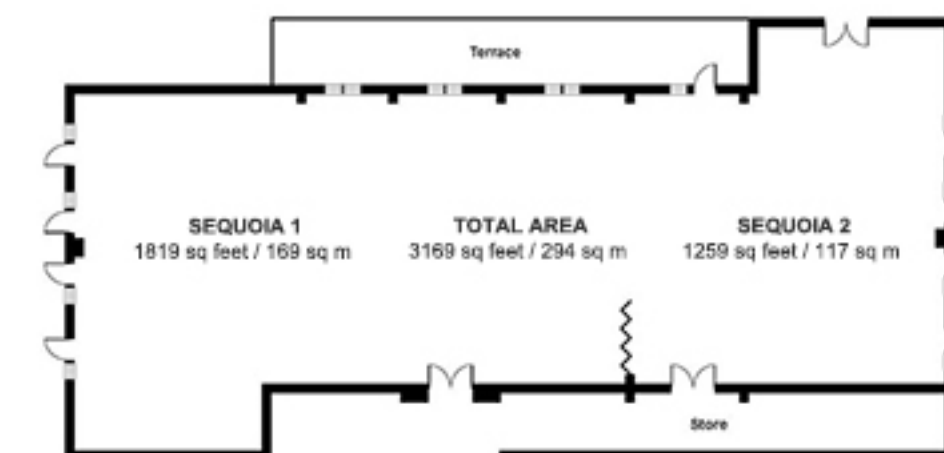
Auditorium





The Sequoia Suite

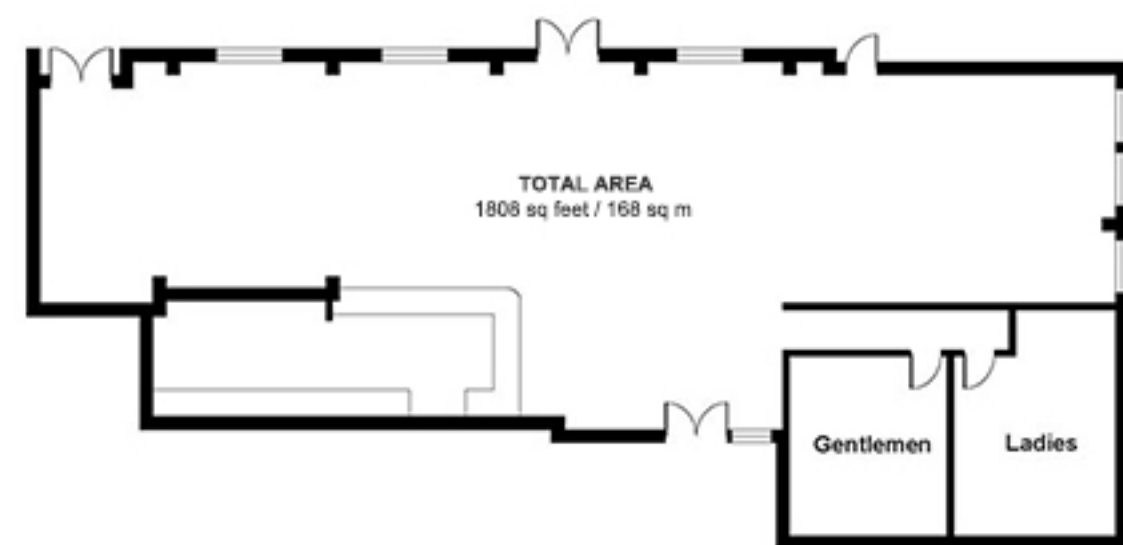
The Sequoia Suite is our largest conference space, accommodating up to 350 delegates. Suitable for large and prestigious events, the suite boasts natural daylight, private bar and an outdoor terrace. The Sequoia Suite is divisible into two separate spaces, it's a multi purpose, highly flexible space that presents the organiser with an enormous range of possibilities.



	Theatre	U-Shape	Classroom	Hollow Square	Boardroom	Oval	Herringbone	Top Table & Sprigs	Banquet	Cabaret	Dinner Dance	Informal
Sequoia 1	250	60	120	50	60	50	80	200	170	140	N/A	200
Sequoia 2	80	20	40	25	20	N/A	N/A	N/A	50	40	N/A	80
Whole Suite	350	80	160	70	80	60	150	180	220	180	200	280

The Juniper Suite

The Juniper suite is a fully self-contained and prestigious suite. With a private bar, cloakrooms and its own private direct access from the car park, this is an enormously popular room for small meetings and private parties. The suite has a fresh and friendly ambience, assisted by the flood of natural daylight from the large double aspect windows. Accessed via the main lobby lounge which serves as a comfortable gathering area and registration point for delegates or guests.



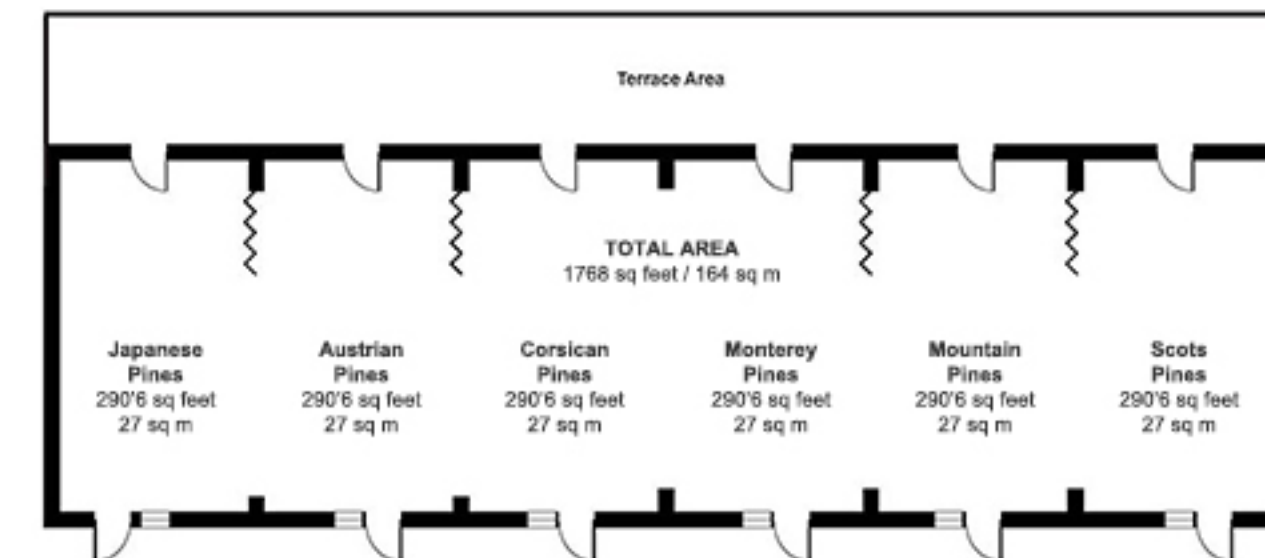
Theatre	U-Shape	Classroom	Hollow Square	Boardroom	Oval	Herringbone	Top Table & Sprigs	Banquet	Cabaret	Dinner Dance	Informal
140	50	55	55	50	50	30	N/A	140	80	120	200





The Pines Suite

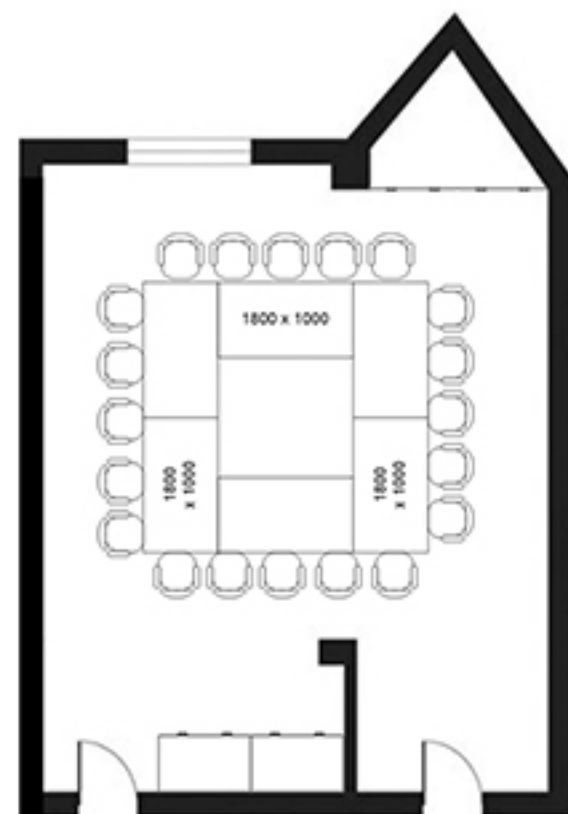
The Pines Suite is our most flexible space – a large suite divisible into six equal sized rooms, each with a capacity of 14 boardroom style, its own window and access onto the spacious outdoor terrace. Perfectly suited to events that involve multiple breakout exercises, syndicate activity or interviews.



	Theatre	U-Shape	V-Shape	Classroom	Hollow Square	Boardroom	Oval	Herringbone	Top Table & Springs	Banquet	Cabaret	Dinner/Dance	Informal
1 x Pine Suite	25	N/A	N/A	N/A	N/A	14	N/A	N/A	N/A	20	N/A	N/A	25
2 x Pine Suite	50	20	N/A	20	N/A	20	20	N/A	N/A	30	24	N/A	50
3 x Pine Suite	80	30	16	30	24	30	30	20	N/A	50	32	N/A	90
4 x Pine Suite	100	40	24	42	32	36	36	30	N/A	70	48	N/A	100
5 x Pine Suite	120	50	30	54	40	48	42	42	N/A	80	64	N/A	125
All Pine Suite	170	60	50	80	56	60	50	60	N/A	120	72	120	150

V2 Innovation Hub

The V2 Innovation Hub offers prestige decor and furnishings to put your team in the mood for business. It is both ideal for breakout sessions, office space away from the main meeting room and private dining for small intimate dinners.



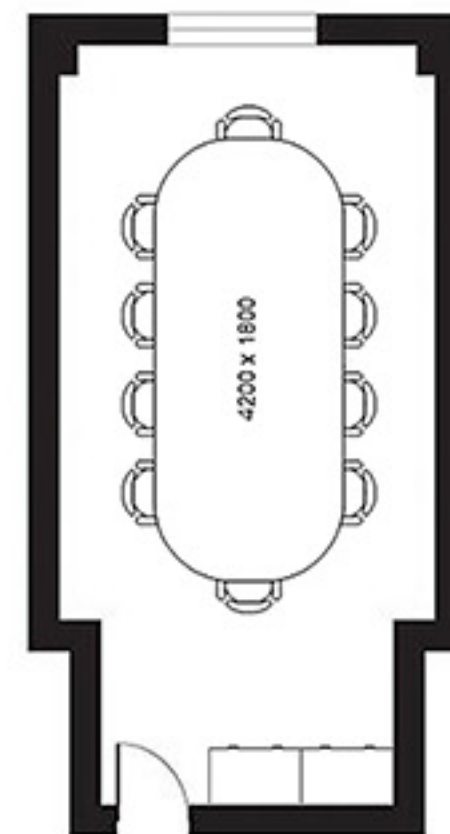
TOTAL AREA
516 sq feet / 36 sq m





The Boardroom

The Boardroom offers prestige decor and furnishings to put your team in the mood for business. The Boardroom is slightly smaller than the Executive Boardroom, which makes it ideal for smaller breakout sessions and private dining for intimate dinners.



TOTAL AREA
300 sq feet / 30 sq m

Meet & Sleep

The Coppid Beech is a unique four star hotel boasting 205 bedrooms all fully equipped with everything you need. From free high speed WiFi and Flat Screen TVs to luxury bedding and even Jacuzzi baths, we will ensure your stay with us is a super comfortable one. Whether you've been on the road for business or have visited from afar, we will make sure to give you the home from home experience.



Check in from 3pm



Late check out



Air Conditioned



High Speed Wifi



Tea & Coffee Maker



Cable TV



Iron



Ironing Board



Hotel Amenities



Contact Us

Coppid Beech Hotel

John Nike Way, Bracknell, RG12 8TF

Email: sales@coppidbeech.com

Telephone: +44 (0) 1344 303 333

