



*The*  
**PEAR TREE**

PURTON · WILTSHIRE

---

**WILTSHIRE**

Ideal for **team building, away days, conferences, workshops, corporate festivals, summer and Christmas parties and product launches.**

[peartreepurton.co.uk](http://peartreepurton.co.uk)

[eventenquiries@peartreepurton.co.uk](mailto:eventenquiries@peartreepurton.co.uk)

**01793 781270**

EXCLUSIVE USE EVENT VENUES

# The Pear Tree – creating unforgettable events

Whether you're planning a live event such as a **conference**, **product launch**, or **awards evening**, a team-building or away day, or a showstopping **seasonal party**, we have a venue for you. Our friendly and professional team is dedicated to delivering the very best experiences that engage, inspire, and motivate your audience.



# Perfect countryside location

## WILTSHIRE - SN5 4ED

Situated in a 400-year-old former vicarage, The Pear Tree is an exclusive-use venue surrounded by seven acres of English countryside in the heart of Wiltshire. With 18 bedrooms spread across The Pear Tree's historic buildings, lush landscapes and a private vineyard, the venue features a formal dining space in the Orangery. There's also a covered outdoor terrace and kitchen and a separate bar and lounge with a dance floor.

[FLOOR PLAN](#)

### SPACE

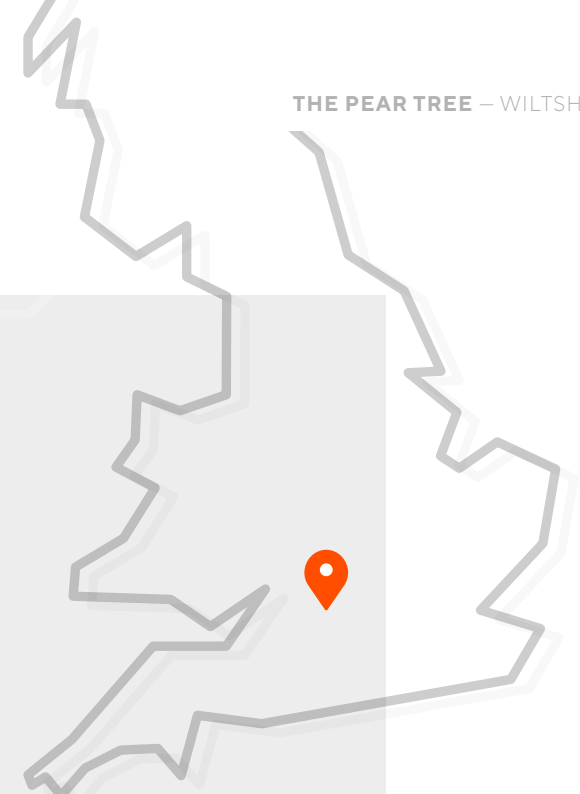
- Host up to 200 delegates
- 18 ensuite bedrooms
- Flexible meeting spaces
- Walled gardens and parkland
- Onsite parking
- Disabled access

### FOOD AND DRINK

- In-house caterers
- Variety of bespoke dining experiences
- Outdoor kitchen
- Onsite bar

### LOCATION

- 10 minutes from the M4
- 15 minutes from Swindon train station
- 45 minutes from Bristol
- 50 minutes from Reading
- 100 minutes from London



## Orangery – ideal space for conferences and workshops

**THEATRE**

150

**U SHAPE**

45

**CABARET**

84

**BOARD ROOM**

18

**DINNER**

150



## Blossom – ideal space for small functions

**THEATRE**

120

**U SHAPE**

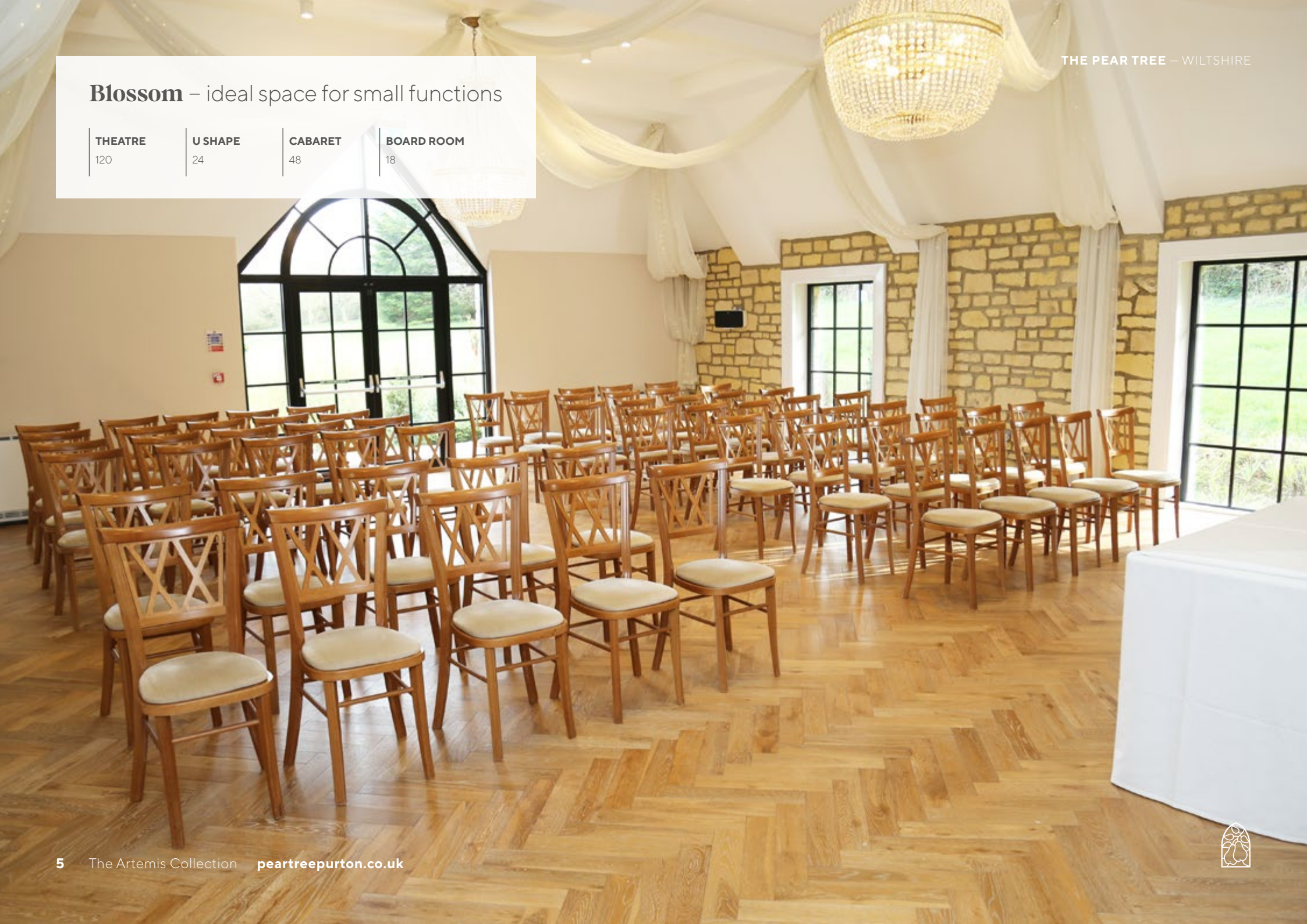
24

**CABARET**

48

**BOARD ROOM**

18

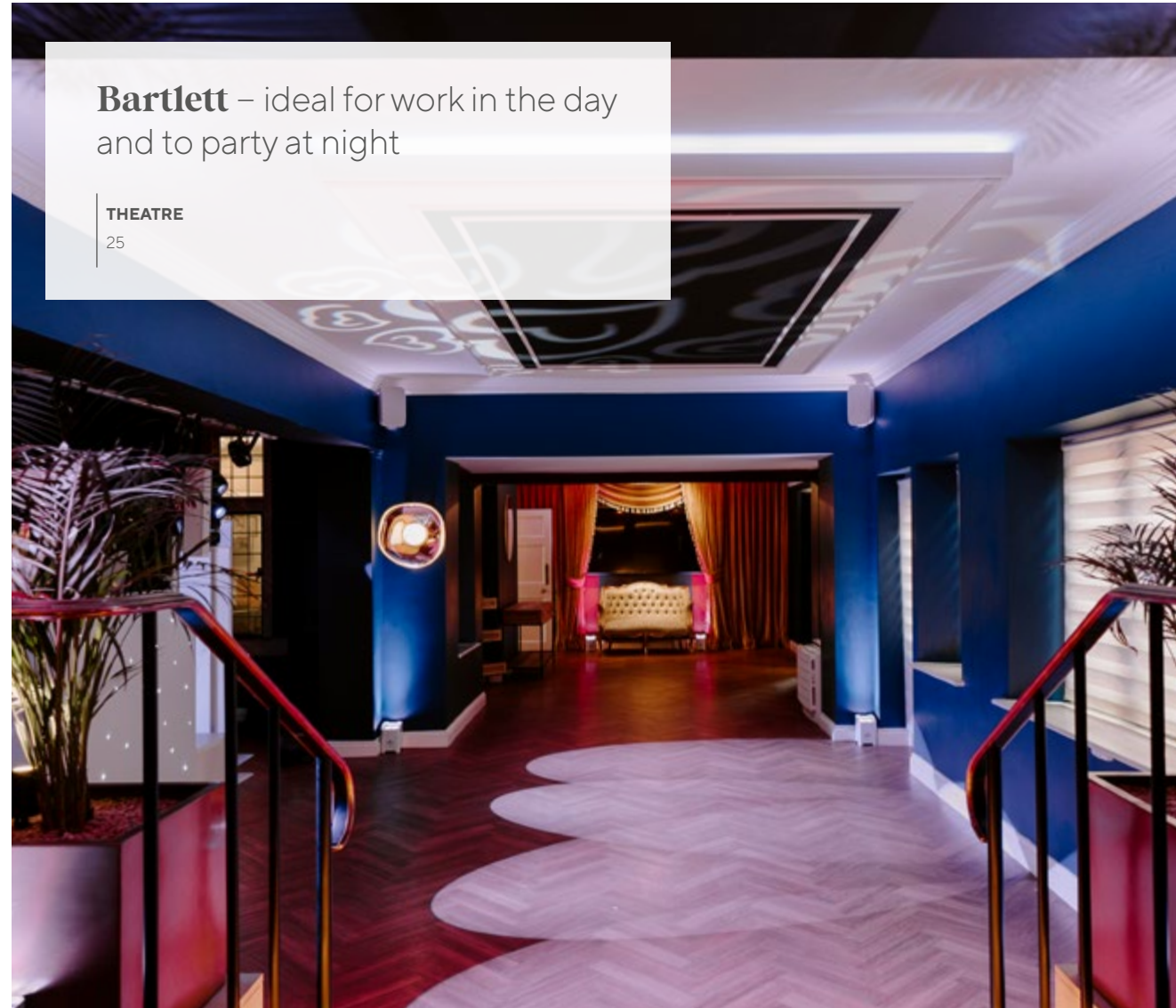




Bar



Library - intimate and quiet



**Bartlett** – ideal for work in the day  
and to party at night

THEATRE  
25





Outdoor Terrace and Kitchen



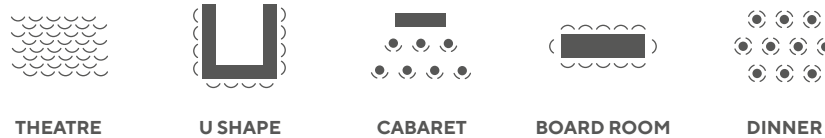
Vineyard



Accommodation



# Room specifications



	THEATRE	U SHAPE	CABARET	BOARD ROOM	DINNER
Orangery	150	45	84	18	150
Blossom	120	24	48	18	•
Bartlett	25	•	•	•	•
Library	•	•	•	•	4 (light lunch)

Certain set ups and guest numbers may require hire of additional furniture.

	WIDTH	LENGTH	HEIGHT (Highest)	HEIGHT (Lowest)	ACCESSIBLE ROOM
Orangery	9.2m	20m	2.8m	2.8m	Yes
Blossom	8m	10m	4m	4m	No
Bartlett	3.7m	19.6m	2.8m	2.8m	Yes
Library	5m	4.5m	2.85m	2.85m	Yes

## AV EQUIPMENT

We have a microphone and speakers, as well as a flipchart, paper and pens available for you onsite. Upon request, we can hire additional equipment including projectors and screens.





# Our venues

The Pear Tree is a part of **The Artemis Collection**, a premium group of exclusive venues in the UK, providing unparalleled access to real-time availability, pricing, and comprehensive venue information - all in one place. We are your single point of contact for the newest and most exciting event venues across the UK.



1.

**Brookfield Barn**  
WEST SUSSEX



2.

**Combermere Abbey**  
CHESHIRE / SHROPSHIRE



3.

**Crumplebury**  
WORCESTER



4.

**Curradine Barns**  
WORCESTER



5.

**Old Palace Chester**  
CHESHIRE



6.

**Pelham House**  
EAST SUSSEX



7.

**Syrencot**  
WILTSHIRE



8.

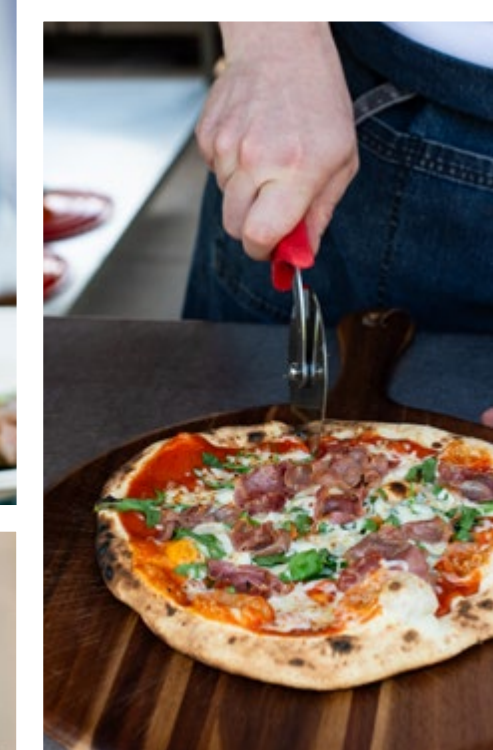
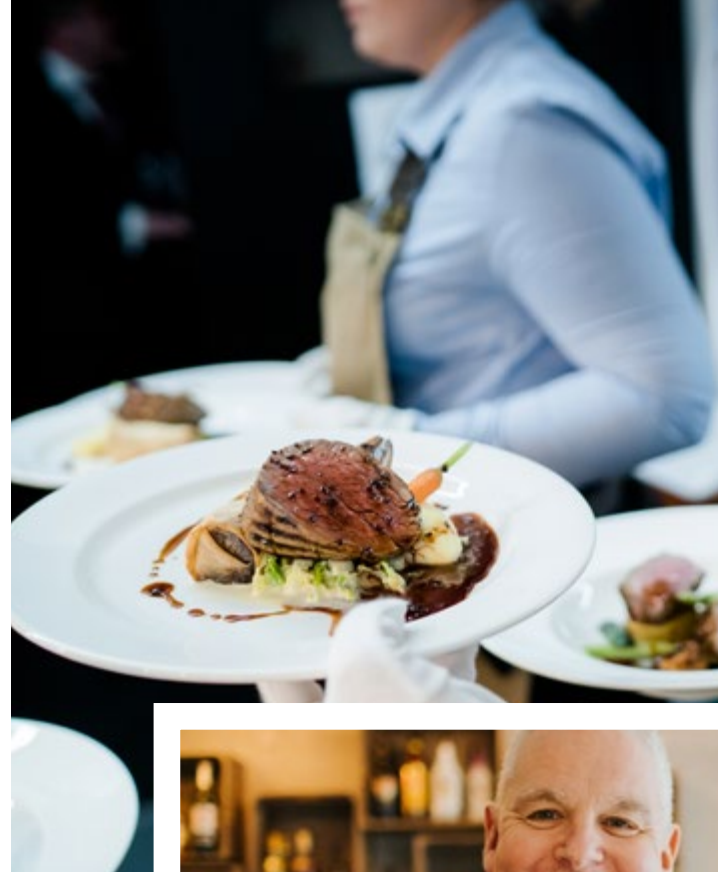
**The Pear Tree**  
WILTSHIRE

# Tailored to you

Choosing the right venue is crucial when you are planning an event. Over 25 years of experience in catering and event management means we can deliver on the most exciting and dynamic requests, from awards evenings to corporate festivals and product launches.

Each of our venues employ its own in-house chef and bar team, all highly skilled professionals, who thrive when creating bespoke menus and working with clients to deliver incredible food and drink experiences.

[SAMPLE MENU](#)



# Proud to partner with



“The Queens Park Bridge centenary celebration at Old Palace Chester was a fantastic opportunity to bring the local community of Chester together.”

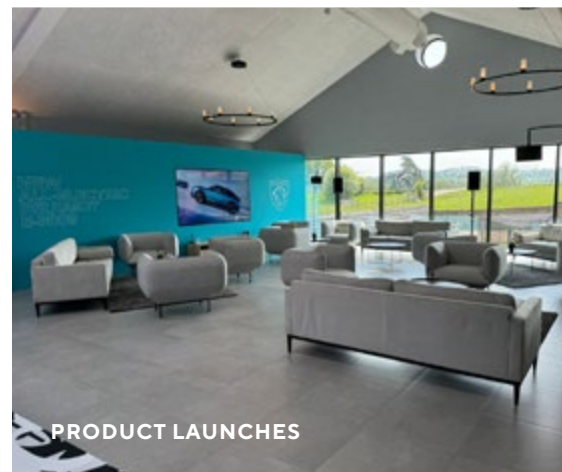
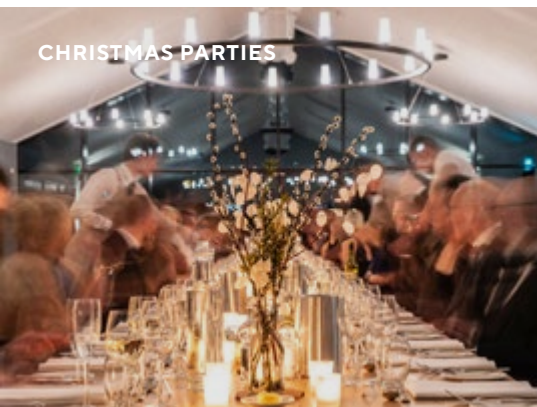
CHESTER BUSINESS CLUB

“An ideal location for our event! A delightful setting nestled in the rolling countryside. The food and the staff exceeded all expectations.”

VOLVO



## EVENT TYPES



**Suitable for all types of events**

Our Artemis Collection of venues are suitable for a range of events, including corporate away days, team-building events, business meetings, conferences, workshops, gala dinners, charity events, award ceremonies, networking events, Christmas parties, summer parties, product launches, corporate festivals, automotive events ... and many more.

# Let's get your event started...

## Contact The Pear Tree team now

eventenquiries@peartreepurton.co.uk 01793 781270



The Pear Tree – a part of The **Artemis** Collection

BROOKFIELD  
— BARN —



*Crumplebury*  
For the curious

